



ECO-500

INSTRUCTION MANUAL



Read all instructions before using this machine.

IMPORTANT SAFETY INSTRUCTIONS

This manual is to ensure that the CFR ECO-500 is operated correctly.
All operators must read, understand and practice the following safety instructions.

CFR ECO-500

TABLE OF CONTENTS

Introduction.....	2
Unpacking instructions	2
Safety instructions	2
Preparing for cleaning	3
Operating instructions.....	4
Maintenance.....	4
Parts and drawings	7
Warranty	11

UNPACKING INSTRUCTIONS

Your ECO-500 was thoroughly inspected, tested, and packaged to deliver the equipment in good operating condition. The freight carrier received and signed for the equipment in good condition. Damage can occur during shipping and to protect your interest, all cartons must be inspected for damage (including any concealed damage) that might have occurred during shipment. Any damage is the responsibility of the freight carrier and should be reported immediately to the carrier. It is your responsibility to issue a claim and to receive compensation from the freight carrier for any damage done in transit. Shipping damage is not warranted.

INTRODUCTION

Congratulations on your purchase of a CFR ECO-500. Read this entire manual before operating or servicing.

Please complete and return the enclosed warranty card.

PARTS AND SERVICE

The ECO-500 is covered by CFR's Preventative Maintenance Program which is designed to maintain the ECO 500 on a quarterly basis. The program focuses on: inspecting the equipment, replacing covered parts as required, and identifying potential situations where a more in-depth service or training may be required.

If service is required, it must be performed by an authorized CFR repair center. Contact your local dealer or call 1.800.533.2557 for the location of a repair center.

SERIAL NUMBER

The serial number of the machine is located on the label, located on the backside of the base. This information is needed when ordering parts or scheduling repairs. Fill in the information below for future reference:

Serial Number _____

Part Number 10468A CFR ECO-500 115V
 (10469A CFR ECO-500-2 230V)

Purchase Date _____

CAUTION

Read All Instructions, Warnings and Cautions before Using

These guidelines are provided for your protection and convenience. Please read them carefully. If you have any questions regarding the use of your equipment call CFR Technical Service at 800.533.2557. Failure to adhere to instructions provided can potentially void any warranties. Precautions and safety warnings are provided for your protection. Failure to observe these warnings could result in personal injury and damage to the equipment. When using an electrical appliance, basic safety precautions should always be followed.



WARNING!

To avoid fire, do not use with a flammable or combustible liquid to clean floor.

IMPORTANT SAFETY INSTRUCTIONS

The ECO-500 is intended for use only as described in this manual. Using the equipment in any manner not described in this manual can void the warranty. Use only manufacturer's recommended accessories.

READ ALL INSTRUCTIONS BEFORE USING

THIS PRODUCT IS INTENDED FOR COMMERCIAL USE ONLY

When using an electrical piece of equipment basic precautions should be followed, including the following:

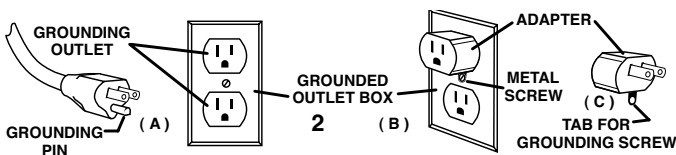


WARNING! To reduce the risk of electric shock, fire, or injury:

1. Operators must read and understand this manual completely before operating the equipment.
2. Make sure all caution, warning, and instructional decals are in place and legible. Replace damaged or missing labels.
3. Do not leave unit unattended while plugged in. Unplug from outlet when not in use and before servicing.
4. Connect to a proper grounded outlet only. (See Grounding Instructions.)
5. Do not use with damaged cord or plug.
6. Do not handle plug or unit with wet hands.
7. Do not pull or carry by cord, use cord as a handle, close a door on cord, or pull cord around sharp edges or corners. Do not run appliance over cord. Keep cord away from heated surfaces.
8. Turn off all controls before unplugging.
9. Do not unplug by pulling on cord. To unplug, grasp the plug, not the cord and remove from outlet.
10. Do not put any object into openings. Do not use with any opening blocked; keep free of dust, lint, hair, and anything that may reduce air flow.
11. Do not pick up anything that is burning or smoking, such as cigarettes, matches, or hot ashes.
12. Do not use without filters in place.
13. Use extra care when cleaning stairs.
14. Do not use to pick up flammable or combustible liquids such as gasoline or use in areas where they may be present.
15. Do not expose to rain. Store indoors.
16. If unit is not working as it should, has been dropped, damaged, left outdoors, or dropped into water, take it to a local CFR service center.

GROUNDING INSTRUCTIONS

This unit must be grounded. Grounding provides the path of least resistance for electric current, in the event of malfunction or breakdown, to reduce the risk of electric shock. This unit is equipped with a cord having an equipment grounding conductor and grounding plug. The plug must be inserted into an appropriate outlet that is properly installed and grounded in accordance with all local codes and ordinances.*



WARNING! Improper connection of the equipment-grounding conductor can result in a risk of electric shock. Check with a qualified electrician or service person if you are in doubt as to whether the outlet is properly grounded. Do not modify the plug provided with the appliance - if it will not fit the outlet; have a grounded outlet installed by a qualified electrician.

SET UP INSTRUCTIONS

Filter Installation

There are three filters in the ECO-500 system: basket filter, bag filter and canister filter. It is imperative to the efficient operation of the ECO-500 that the filters are installed properly.

Bag Filter

Place bag filter in recovery inlet area. Be sure that wire container is in place before fitting bag filter in place.



Basket Filter

Position basket filter over bag filter and attach recovery inlet using the two swivel clamps.



* The illustration applies only to 115V model.



Canister Filter

Soak canister filter inside and out in water before installing inside recovery tank. Make sure water is coming through the filter wall when you fill with water while holding the canister upside down. To install, simply screw canister filter into place.

OPERATING INSTRUCTIONS

1. Remove lid and composite filter.
2. Check canister filter. Make sure the canister filter is installed snugly.
3. Fill tank with water to a desired level or 1" below the vacuum float switch. Warm water will be more efficiently heated to desired temperature than cold water.
4. Add CFR in-tank cleaner per chemical label use instructions. In addition, pre-spraying is often desirable and will assist in producing the fastest and best cleaning results. See chemical product labels for more information. Note: Use caution when moving machine (especially on inclines) with fluid in the tank to prevent fluid from entering vacuum intake at back of machine tank and flooding the vacuum.

CFR chemicals have been specially formulated to work with this machine.

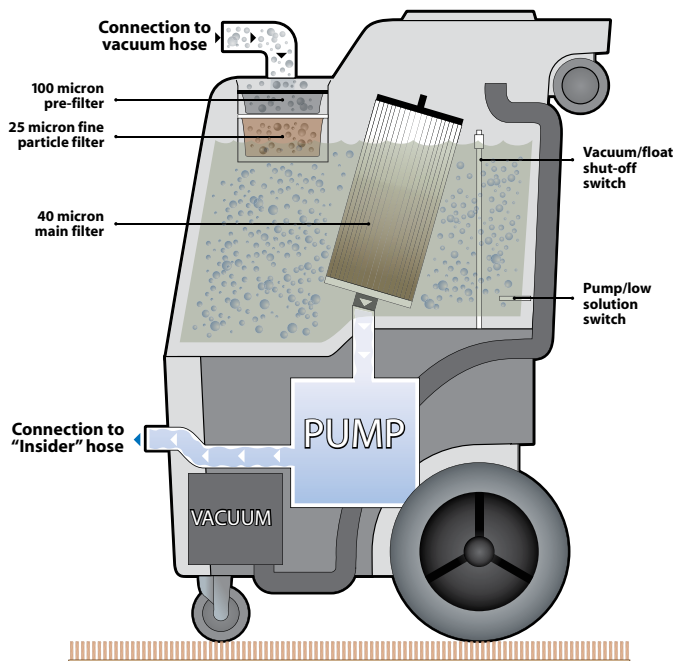
5. Plug the receptacle cords into separate circuits. Green light will turn on when properly connected. 115 model only.
6. Prime pump by re-circulating fluid through priming hose included for 15/30 seconds. Attach priming hose to quick connect and turn pump on while placing opposite end of hose directly back into tank. Once a steady stream of solution flows, you may turn off pump and remove priming hose. The machine is now primed. Re-circulating the fluid primes the pump and expels trapped air from the system.
7. Replace inlet filter and lid
8. Lock the rectangular lid into position
9. Attach hose assembly to machine, connect fluid hose to the quick-disconnect found on the front of machine and connect vacuum hose cuff to recovery inlet fitting.
10. Attach the desired tool to the valve end of the hose assembly.
11. Turn on vacuum and pump switches.
12. Turn on heater switch if desired.
13. Clean surface with tool attached to hose assembly.
14. During the cleaning process, for any reason, the fluid level is heightened, the high level float switch will shut off the vacuum motors. Should such case happen, drain the tank so the fluid level is much below the high float switch.

CAUTION! When cleaning, monitor foam in the machine's tank. Areas cleaned with other cleaning equipment or chemicals may cause excessive foam to collect in the tank.



WARNING! EXCESSIVE FOAM IN THE TANK MAY CAUSE VACUUM MOTOR FLOODING AND MACHINE DAMAGE. Pour one to two ounces of CFR Defoam directly into the tank or into the vacuum hose while the vacuum is running. CFR Defoamer has been specially formulated to work with this machine.

When finished cleaning, perform the daily maintenance procedure. Be sure that all filters are cleaned thoroughly and replaced in machine. Leave lid off for drying.



MAINTENANCE

Daily Maintenance

To maintain optimum performance of the equipment, tools and filters should be cleaned after each use. Replace any filters that cannot be cleaned or are damaged. Nozzles that cannot be cleared should be discarded. Wipe down the equipment with a damp cloth to keep clean and preserve the appearance.

1. Wands and Tools

Rinse opening of tool with water to eliminate any debris.

Wand only - open and clean in-line strainer.

- A. Disconnect the In-line Strainer by using the quick disconnect coupler.
- B. Remove the filter and rinse with water.
- C. Remove any debris from the strainer.
- D. Keep o-ring and threads of the plug lubricated. CFR DEFOAM is a good lubricant or use a non-petroleum based lubricant. This will ensure a tighter seal.

Wipe tool with damp cloth and store with head up to prevent clogging of nozzle.

2. Filters

In-Line Strainer Filter - Disconnect the In-line Strainer Filter on the wand by using the quick disconnect coupler. Remove the filter and rinse with water. Remove any debris from the strainer. Keep o-ring and threads of the plug lubricated. CFR DeFoam is a good lubricant or use a non-petroleum based lubricant. This will ensure a tighter seal.

Basket Filter - Remove the basket filter. Dump and clean debris at the end of each cleaning job.

Bag Filter - Remove the bag filter and rinse out and clean thoroughly or replace with part# 72776A.

Canister Filter - Unscrew this filter and rise thoroughly with water. Be sure to rinse both inner and outer filter media. When finished screw cartridge filter back in place.

Periodic Maintenance

1. Check power cord for any breaks, separations, or cuts. Make sure the ground pin on the connector is intact or the machine will be unsafe. Make sure the ground pin on all three prongs on the twist lock connector are intact.
2. Check for plugged nozzles when using tools. If streaking occurs during cleaning, a plugged nozzle may be the cause. A plugged or partially plugged nozzle can be identified by holding the tool 5-7" above the surface and checking for an even spray pattern. To clean a plugged nozzle, remove the nozzle and direct pressurized air backwards through the nozzle or backwash the nozzle with water. A convenient method is to insert the nozzle into a garden hose ball valve, tighten the ball valve to a faucet, and turn on the water. (CFR has ball valves available, part #7AX020). Inspect nozzle and repeat cleaning procedure, if necessary. Discard nozzles that cannot be cleared. Tool nozzles wear and must be replaced after 200-250 hours of use.
3. Occasionally open the base and inspect hose and other connections for leaks. Repair or replace any leaking parts. Always disconnect power cord, before removing side panels.

Circuit Breakers: Overload circuit breakers are placed in both the pump and vacuum circuits to protect against unusually heavy current (ampere) loads. If either breaker trips, the pump motor or vacuum motor is overloaded.

4. It is very important to monitor machine operating hours for proper maintenance of the motors and pumps. After 700 hours of operation, the vacuum motor brushes should be inspected by an authorized repair station and replaced if worn (length is .5 inches or less).

5. Check vacuum motor performance using a vacuum gauge. Place this gauge on the tank inlet fitting with the vacuum turned on. Water lift should be between 190 and 210 inches. If the reading is lower, check for air leaks in the tank, cover gasket, and drain hose.
6. Check pump performance occasionally against built-in pressure gauge. Maximum pump running pressure on the ECO-500 should be 500 ± 10 p.s.i. If the pumping pressure is outside of this range, call your dealer or authorized station. After 400 hours, the pump valves should be replaced. After 700 hours of operation the pump cam bearing and plunger should be replaced. The pressure regulator should be rebuilt after 400 hours of operation.

SPECIFICATIONS - ECO-500

Power Cord	Two Cords, 12 Ga, 3 Wire, Molded End Plug
Voltage_USA	115/120 volts AC, 60 HZ
Voltage_UK	230 volts AC, 50 HZ
Tank Volume	10 gallons max
Fill Level	1" below the high water shutoff float
Vacuum Motor	(2) 3 stage with 210" water lift
Pump Motor	1/4 hp AC motor
Pump	plunger type; 50 to 500 psi.
Weight	104 lbs.
Height	35"
Width	20"
Length	29"
Wheels	(2) 10" non-marking rear wheels
Casters	(2) 4" non-marking front swivel casters
Body	rotomolded polyethelene tank, powder coated aluminum base
Filters4 filters: 100 mesh basket filter, 25 micron bag filter, 40 micron canister filter and inline filter at wand.

TROUBLE SHOOTING GUARD

Vacuum or pump will not run

- Check that electrical cord is firmly seated in wall outlet.
- Check and reset building circuit breaker if tripped.

Trips building circuit breaker

- Circuit is overloaded - move cord to a different wall outlet.
- If using an additional extension cord, make sure it is in good condition, less than 70 feet long and #12 gauge or heavier.
- Check plug end and cord for damage.
- Check machine for dual circuit indicator light. If the light is not green, than you must move one cord to a different outlet on another circuit.

Vacuum won't run.

- Check vacuum switch. It should be in the "on" position.
- Check that water level in tank is not too high.

Pump won't run

- Check pump switch - it should be in the "on" position.
- Check pump circuit breaker (5 amp) and reset if tripped.
- Check fluid level, must have at least 5 gallons in tank.

Pump tries to run and then blows circuit breaker

- Check power cord for frayed, cut or worn spots.
- If using an extension cord, make sure it is in good condition, less than 70 feet long and #12 gauge or heavier.
- Check pump static PSI - must be 500 psi or less
- Check wall outlet voltage. If below 105 volts, pump will not work.

Pump starts and stops

- Check for sticking pump float.
- Check fluid level - must have at least 5 gallons in tank.

Pump starts and sprays reduced amount of fluid

- Drain the tank and remove the cartridge filter, thoroughly clean and soak both inner and outer filter media. Replace the filter and fill the tank. Prime the pump

Water dripping from bottom of machine exhaust

- Check machine for excess foaming. Add CFR Defoam to tool hose and tank. Open machine top cover and let vacuum run for 10 minutes to dry out vacuum motor, then close lid and resume cleaning.

Vacuum hose or tool leaks

- Leave vacuum running for 1 minute when finished cleaning to clear hose.
- Check for holes/breaks in vacuum hose.
- Make sure the inline strainer is properly tightened and fluid hose connectors are fully seated.

Carpet too wet

- NOTE: CFR Wonder Wands are used in a drag position, different from CFR Roller Wand or Glide Wand.
- Check carpet tool position - head must be completely "seated" on carpet to provide maximum water recovery.
- Check tool and hose for any obstructions.
- Check lid cover sealing properly - is basket filter gasket properly seated in tank? Is basket filter gasket in good shape with no cuts, cracks, or worn/compressed areas?
- Check for cracks in lid cover.
- Check drain hose and fittings for cracks and tears.
- Check tool hose for holes, cracks, or cuts.
- Check hose cuffs - must seat firmly on tank fitting and tool.
- Check water dripping from bottom of machine exhaust. If present, check machine for excess foaming.
- Check carpet installation. Some carpets are installed on uneven surfaces with ridges and bumps. It is difficult to get good drying times with this type of installation.

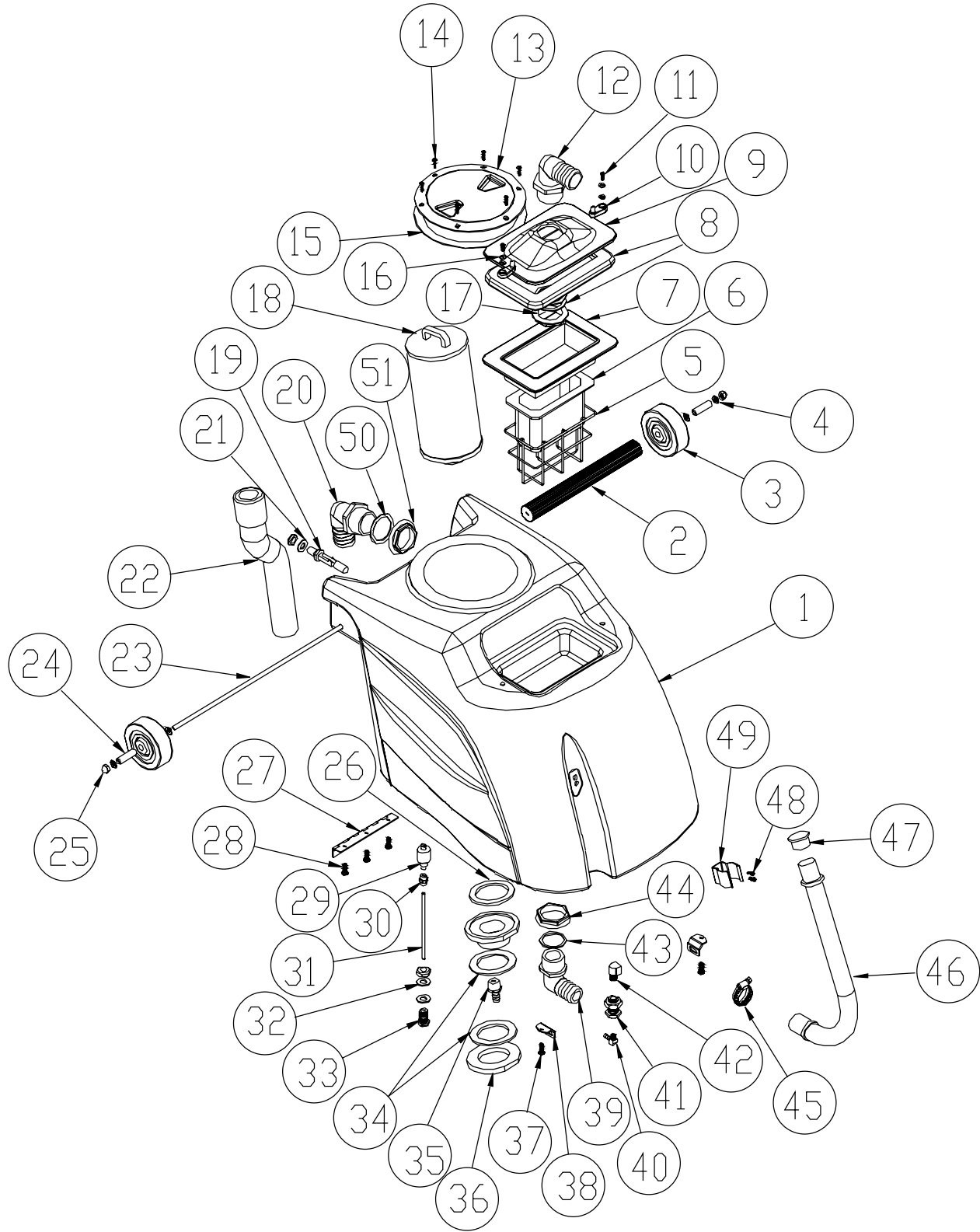
Streaks on carpet

- Check tool and hose for obstructions.
- Check and clean inline strainer filter.
- Check and clean in tank filters.
- Check and clean stainless back flush filter screen inside tank.
- Check nozzles for full spray. Clean if clogged or replace if worn.
- Check pump pressure drop while cleaning. Should not drop more than 100 p.s.i. Make sure air is out of system by re-priming pump. If there is still a problem, remove and clean canister filter.
- Make sure strokes overlap a minimum of 3 inches.
- Check CFR chemical usage instructions for proper application.
- Multiple cleanings may be needed to clean deeply imbedded dirt that is pulled to the surface by CFR's deep clean ing technology. Offset cleaning passes by 6 inches.

Excessive pressure drop when cleaning. (exceeds 100 p.s.i.)

- Adjust static pressure to 500 p.s.i. when not cleaning.
- Check and clean in tank filters.
- Check and replace worn spray nozzles and loose or leaking fittings on hose.
- Purge excess air from pumping system using priming hose or hose with no nozzle.

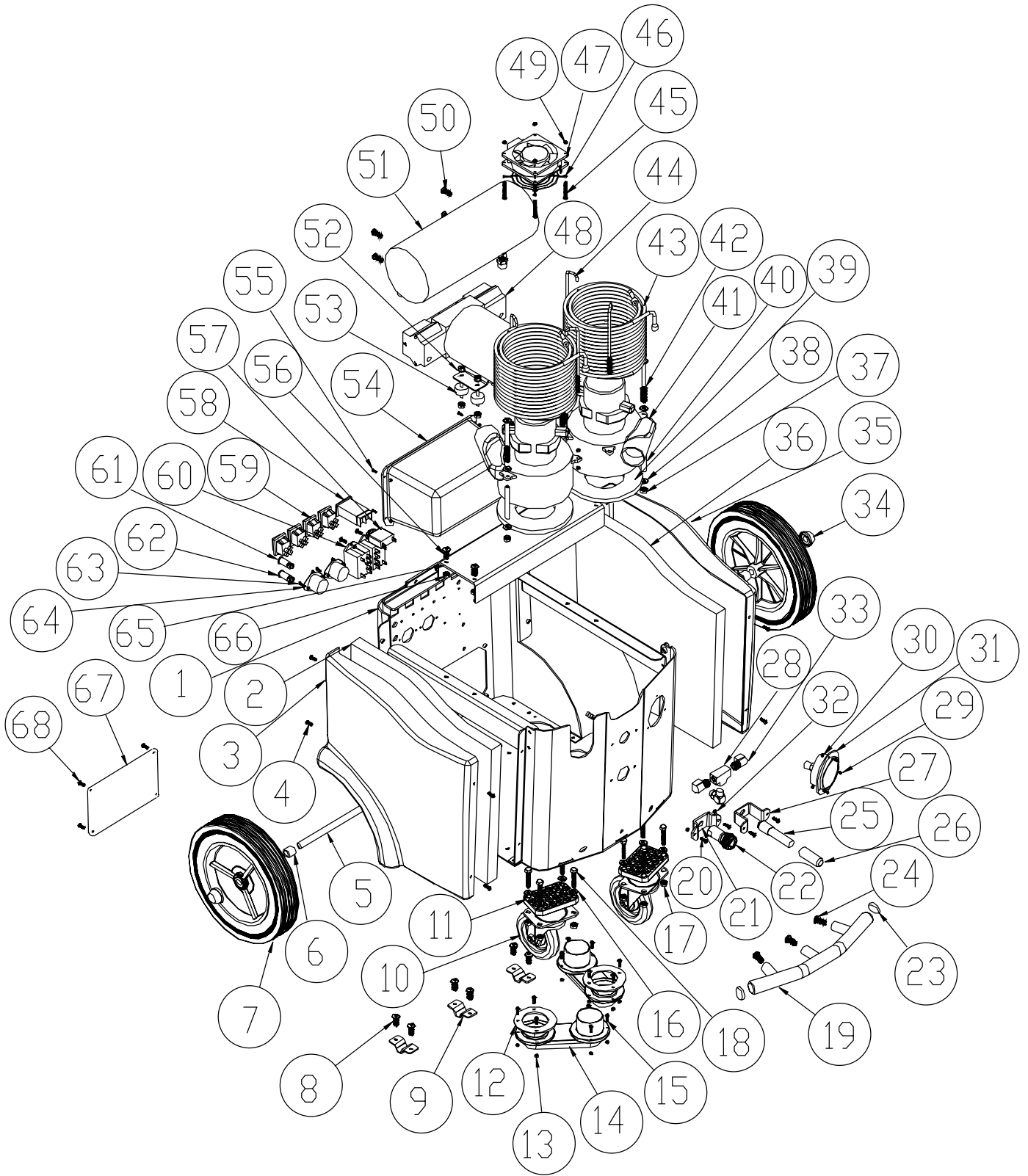
TANK



TANK

	DESCRIPTION	PART NUMBER	QTY		DESCRIPTION	PART NUMBER	QTY
1	Tank	72773A	1	27	Hinge, Tank	72768A	1
2	Handle	X9453+	1	28	1/4-20 3/4" Screw	7EW001	3
3	Wheel, 4" Handle	X8025+	2	29	Float Switch, Vacuum	70343A	1
4	1/4 Washer	X8235+	4	30	1/8 Coupling	7DA001	1
5	Frame, Filter	72775A	1	31	Nipple, 1/8" x 6" Long	72799A	1
6	Filter, Cloth	72776A	1	32	Gasket, Float Switch	72794A	2
7	Filter, Basket	72774A	1	33	1/8 Anchor Connector	7AJ004	1
8	Gasket, Basket	72778C	1	34	Gasket, Bulkhead	72793A	2
9	Lid, Tank	72790A	1	35	Barb, 1/4M 1/2H	7AT004	1
10	Holder, Lid	72789A	2	36	Bulkhead, Filter	72791A	1
11	10-32 3/4" Screw	7BR005	2	37	1/4-20 1/2" Screw	7BS003	2
12	Elbow, 1 1/2M 1 1/2H, BLK Nylon	7GR034B	1	38	Bracket, Tank Lock	72767A	2
13	Lid, 6"	PX103+	1	39	Elbow, 1 1/4M 1 1/4H, Nylon	7GR016	2
14	#8 sheet metal screw	72387A	6	40	Barb, Elbow, 1/4M 1/8H	7AT006	1
15	Gasket, Lid	PX103G+	1	41	1/4 Anchor Connector	PX48+	1
16	Washer, #10, Split Lock	7CL003	2	42	1/4 Street Elbow	PC49+	1
17	Gasket 1 1/2	PX14A+	2	43	Gasket 1/1/4	X9164+	1
18	Filter, Final	72777A	1	44	1 1/4" nut	X9165+	1
19	Float Switch	70343A	1	45	1 1/4" Worm Gear	7DL005	1
20	Elbow, 1 1/2M 1 1/2H, BLK Nylon	7GR034B	1	46	Drain Hose	72797A	1
21	Gasket, Float Switch	72794A	1	47	Plug, Drain Hose	PAS36+	1
22	Hose, Vacuum	72384A	1	48	10-32 3/8	7BH004	2
23	Stud, All Threads	72779A	1	49	Clip spring	72173A	1
24	Spacer, Wheel	72486A	2	50	Gasket 1 1/2	PX14A+	1
25	Acorn Nut, 5/16	72059A	1	51	1 1/2" nut	PX46+	6
26	Gasket, Final Filter	72792A	1				

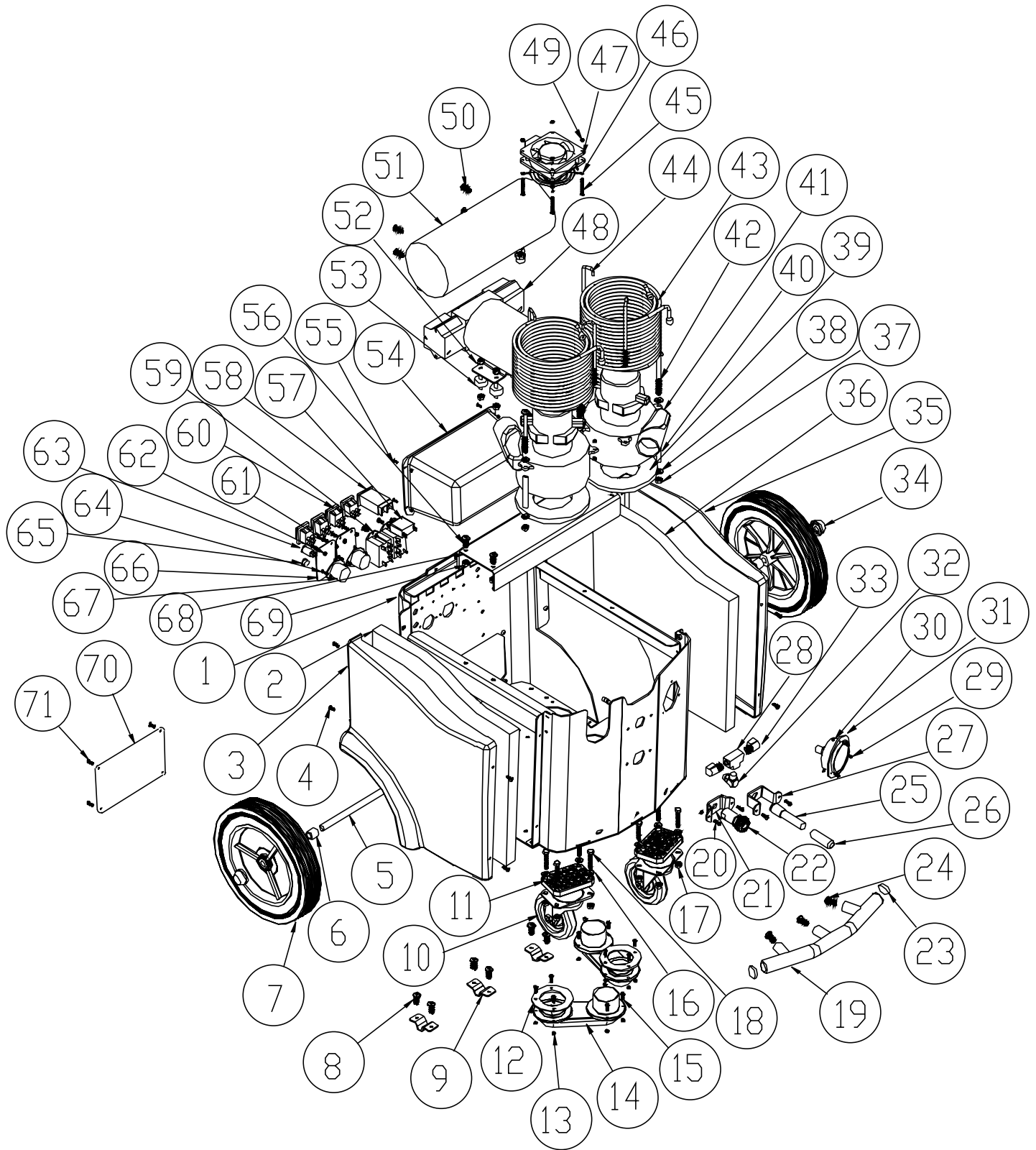
115V MODEL



115V MODEL

	DESCRIPTION	PART NUMBER	QTY		DESCRIPTION	PART NUMBER	QTY
1	Base	72781B	1	35	"Cover, Left Side"	72787A	1
2	"Foam, Side Acoustic R"	72796A	1	36	"Foam, Side Acoustic L"	72796B	1
3	"Cover, Right Side"	72788A	1	37	1/4-20 Keps nut	7BF004	4
4	"10-32 1/2"" Black PHMS"	72807A	8	38	1/4 Washer	X8235+	8
5	Axle	72769A	1	39	Vacuum Gasket	70020B	2
6	"Spacer, Wheel Axle"	72801A	2	40	Spacer, Vac, 3.5" L	72605A	4
7	"Wheel, 10"	X9063+	2	41	Vacuum 3 Stage 115V	72365A	2
8	"1/4-20 3/4"" Screw"	7EW001	6	42	"1/4-20 4 1/2"" Hex"	72812A	4
9	"Bracket, Axle"	72770A	3	43	Perfect Heat Coil 3 Stage	72713B	2
10	Caster	71474A	2	44	J-Hook 3 stage	X9423+	4
11	"Spacer, Caster"	72783A	2	45	"#8-32 2 1/2"" screw"	X8274+	4
12	Vacuum Chamber Gasket	X9468+	4	46	"Grill, Fan"	72702A	1
13	10-32 keps nut	7BF008	12	47	Cooling Fan 115V	72700A	1
14	Vacuum manifold	X9467+	2	48	MOTOR 115V Low Profile	PT400MS+	1
15	"10-32 3/4"" Screw"	7BR005	12	49	8-32 keps nut	X8256+	4
16	1/4 Washer	X8235+	8	50	"1/4-20 1/2"" Screw"	7BS003	4
17	5/16 keps nut	7BF005	8	51	Heater 2000W	X9105+	1
18	" 5/16 1 1/4"" Screw"	X8227+	8	52	1/4-20 Keps nut	7BF004	8
19	"Bumper, Front"	72810A	1	53	Motor Mount	72149A	4
20	"10-24 1/2"" Screw"	7BS001	4	54	"Box, Switch"	72772A	1
21	"Bracket, QD Coupler"	71312A	1	55	"10-24 1/2"" Screw"	7BS001	4
22	Coupler QD SS	72800A	1	56	"1/4-20 3/4"" Screw"	7EW001	4
23	"Plug, Bumper"	72804A	2	57	Circuit Breaker 5 amp	X9324+	1
24	"5/16-18 3/4""	7DT001	3	58	Hour Meter 115V	72411A	1
25	"Regulator, Pressure"	72059A	1	59	Rocker Switch	PX87+	4
26	"Sleeve, Regulator"	72808A	1	60	Relay 115V	71379A	2
27	Bracket Mount Pressure Regulator	70223A	1	61	Dual Circuit Light	PX86+	1
28	1/4" Tee Union	7AV001	1	62	Heater Lamp	X8102+	1
29	"6-32 3/4"" Screw"	X8243+	3	63	"6-32 3/4"" Screw"	X8243+	4
30	6-32 nut	X8240+	3	64	"Receptacle, Male Flanged"	X9429+	2
31	Pressure Gauge	70066A	1	65	"Brace, Base"	72795A	1
32	10-24 keps nut	7BF003	4	66	1/4-20 Keps nut	7BF004	4
33	1/4 elbow	PC49+	2	67	"Access Panel, Base"	72809A	1
34	Nut, Push 1/2"	7GL002	2	68	"#8-32 2 1/2"" screw"	X8274+	4

230V MODEL



230V MODEL

	DESCRIPTION	PART NUMBER	QTY		DESCRIPTION	PART NUMBER	QTY
1	Base	72781A	1	37	1/4-20 Keps nut	7BF004	4
2	"Foam, Side Acoustic R"	72796A	1	38	1/4 Washer	X8235+	8
3	"Cover, Right Side"	72788A	1	39	Vacuum Gasket	70020B	2
4	"10-32 1/2"" Black PHMS"	72807A	8	40	Spacer, vac, 3.5" L	72605A	4
5	Axle	72769A	1	41	Vacuum 3 Stage 230V	72611A-C	2
6	"Spacer, Wheel Axle"	72801A	2	42	"1/4-20 4 1/2"" Hex"	72812A	4
7	"Wheel, 10"""	X9063+	2	43	Perfect Heat Coil 3 Stage	72713B	2
8	"1/4-20 3/4"" Screw"	7EW001	6	44	J-Hook 3 stage	X9423+	4
9	"Bracket, Axle"	72770A	3	45	"#8-32 2 1/2"" screw"	X8274+	4
10	Caster	71474A	2	46	"Grill, Fan"	72702A	1
11	"Spacer, Caster"	72783A	2	47	Cooling Fan 230V	72701A	1
12	Vacuum Chamber Gasket	X9468+	4	48	MOTOR 230V Low Profile	PT400MS-2+	1
13	10-32 keps nut	7BF008	12	49	8-32 keps nut	X8256+	4
14	Vacuum manifold	X9467+	2	50	"1/4-20 1/2"" Screw"	7BS003	4
15	"10-32 3/4"" Screw"	7BR005	12	51	Heater 230V 3000W	PF3000B+	1
16	1/4 Washer	X8235+	8	52	1/4-20 Keps nut	7BF004	8
17	5/16 keps nut	7BF005	8	53	Motor Mount	72149A	4
18	" 5/16 1 1/4"" Screw"	X8227+	8	54	"Box, Switch"	72772A	1
19	"Bumper, Front"	72810A	1	55	"10-24 1/2"" Screw"	7BS001	4
20	"10-24 1/2"" Screw"	7BS001	4	56	"1/4-20 3/4"" Screw"	7EW001	4
21	"Bracket, QD Coupler"	71312A	1	57	Circuit Breaker 5 amp	X9324+	1
22	Coupler QD SS	72800A	1	58	Hour Meter 230V	72410A	1
23	"Plug, Bumper"	72804A	2	59	Relay 230V	71379B	2
24	"5/16-18 3/4"""	7DT001	3	60	Rocker Switch	PX87+	4
25	"Regulator, Pressure"	72059A	1	61	"10-24 3/4"" Black screw"	X8276+	4
26	"Sleeve, Regulator"	72808A	1	62	10-24 keps nut	7BF003	12
27	Bracket Mount Pressure Regulator	70223A	1	63	Heater Light Red 230V	72806A	13
28	1/4 Tee Union	7AV001	1	64	"6-32 3/4"" Screw"	X8243+	4
29	"6-32 3/4"" Screw"	X8243+	3	65	"Plug, Black"	71804A+	1
30	6-32 nut	X8240+	3	66	"Cover, Receptacle"	X9096+	2
31	Pressure Gauge	70066A	1	67	"Receptacle, Male Flanged"	X9000+	2
32	10-24 keps nut	7BF003	4	68	"Brace, Base"	72795A	1
33	1/4 elbow	PC49+	2	69	1/4-20 Keps nut	7BF004	4
34	"Nut, Push 1/2"""	7GL002	2	70	"Access Panel, Base"	72809A	1
35	"Cover, Left Side"	72787A	1	71	"#8-32 2 1/2"" screw"	X8274+	4
36	"Foam, Side Acoustic L"	72796B	1				
37	1/4-20 Keps nut	7BF004	4				

Warranty

CFR, a Tacony company, warrants new products manufactured and sold under the name CFR to be free from defects in materials and workmanship under normal use and service. CFR's obligation under this warranty is limited to repairing or replacing, at our option, such products or parts which are returned to our factory authorized service center, freight prepaid, within the warranty period and are found to be defective in materials or workmanship. For rotationally molded polyethylene housings and aluminum frames and chassis this warranty expires 60 months from the date of registration; if the warrant is not registered, it expires 60 months from the factory shipment date. For all other components, with the exception of wear items (i.e. filter, nozzles, etc.) this warranty expires 12 months from the date of registration on the warranty. If not registered, it expires 12 months from the factory shipment date. For hoses, tools, and other attachments manufactured and sold by CFR, this warranty expires 12 months from factory shipment date. Parts replaced or repaired under warranty are guaranteed for the remainder of the original warranty period. Replacement parts that have become defective through wear or abuse are not included in this warranty. CFR will pay service labor to the distributor or authorized service repair center per the warranty flat rate schedule. Service labor will be paid for two years on all warranted polyethylene housings, aluminum frames and chassis, and one year on all other warranted components.

CFR systems are designed for use only with specially formulated CFR Recyclable Cleaning Chemicals. Use of any other chemical in CFR systems may cause damage to the pump, motor and other components and may void the warranty.

This warranty shall cease to be in effect if repairs, replacements or alternations are made by the purchaser or any non-authorized service station. This warranty does not apply to damage caused by misuse, abuse, or negligence of the buyer or third party, or damage due to transportation of product.

CFR MAKES NO WARRANTY, EXPRESS OR IMPLIED, INCLUDING WITHOUT LIMITATIONS, ANY WARRANTIES OF FITNESS OR MERCHANTABILITY, EXCEPT AS EXPRESSLY SET FORTH ABOVE WITH RESPECT TO SUCH PRODUCTS OR PARTS THEREIN. NOR SHALL CFR HAVE INCURRED ANY OTHER OBLIGATIONS OR LIABILITIES ON ITS PART OR BE LIABLE FOR ANY ANTICIPATED OR LOST PROFITS, INCIDENTAL DAMAGES, CONSEQUENTIAL DAMAGES, TIME CHARGES OR ANY OTHER LOSSES INCURRED IN CONNECTION WITH THE PURCHASE, INSTALLATION, REPLACEMENT OR REPAIR OF SUCH PRODUCTS OR ANY PARTS THEREIN WHETHER ORIGINAL EQUIPMENT OR INSTALLED AS A REPLACEMENT, COVERED BY THIS WARRANTY OR OTHERWISE; AND CFR DOES NOT AUTHORIZE ANY PERSONA TO ASSUME FOR CFR ANY OTHER LIABILITY IN CONNECTION WITH THE PRODUCTS OR PARTS THEREIN.

For more information about top quality CFR products please see your local CFR distributor or visit us at www.CFRcorp.com

**Thank you for purchasing
CFR Cleaning Systems.**

3101 Wichita Court - Fort Worth, TX 76140 - 800.533.2557 - www.CFRcorp.com