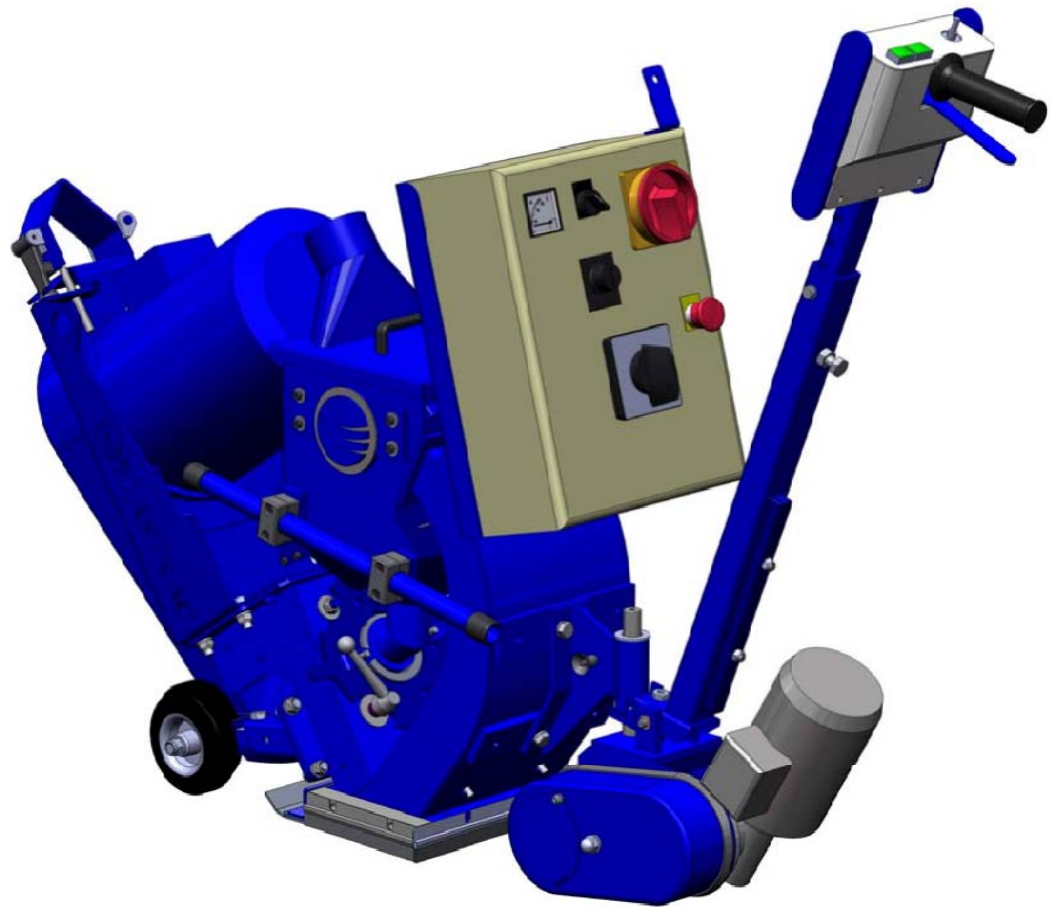




1-8DPS Global

1-8DPS30
1-8DPS55
1-8DPS75
Version 1.0



EC DECLARATION OF CONFORMITY

in accordance with Appendix II sub A of Directive 98/37/EC

BLASTRAC B.V.
Utrechthaven 12
NL - 3433 PN NIEUWEGEIN
Tel: 0031 (0)30 601 88 66
Fax: 0031 (0)30 601 83 33
Info@Blastrac.nl
The Netherlands

Declare under our sole responsibility that the machine as described below
Conforms with the Health and Safety requirements of the European Directive
of the machine Safety.

In case of changes to the machine without our written authorization this declaration loses
its validity.

Model: *BLASTRAC 1-8DPS Global* **Serial number:** *.....*

1. satisfies the conditions set out in the Machine Directive (Directive 98/37/EC); Low voltage directive (73/23/CEE, as last amended; EMC directive 89/336/CEE, as last amended)
2. satisfies the following harmonized standards:
NEN-EN 349, NEN-EN 418, NEN-EN 294 and NEN-EN 60204

Nieuwegein 04-03-2010



Michiel Kalisvaart



Table of contents

EC Declaration of Conformity	02
1. Introduction	04
2. Machine description	04
3. Safety	05
Safety precautions	
Safety regulations	
Safety instructions	
4. Initial operation	07
Checkpoints of power supply	
Checkpoints of machine	
5. Operating	08
6. Maintenance	09
7. Selection of abrasive	10
8. Technical data	11
Contact	12

1. Introduction

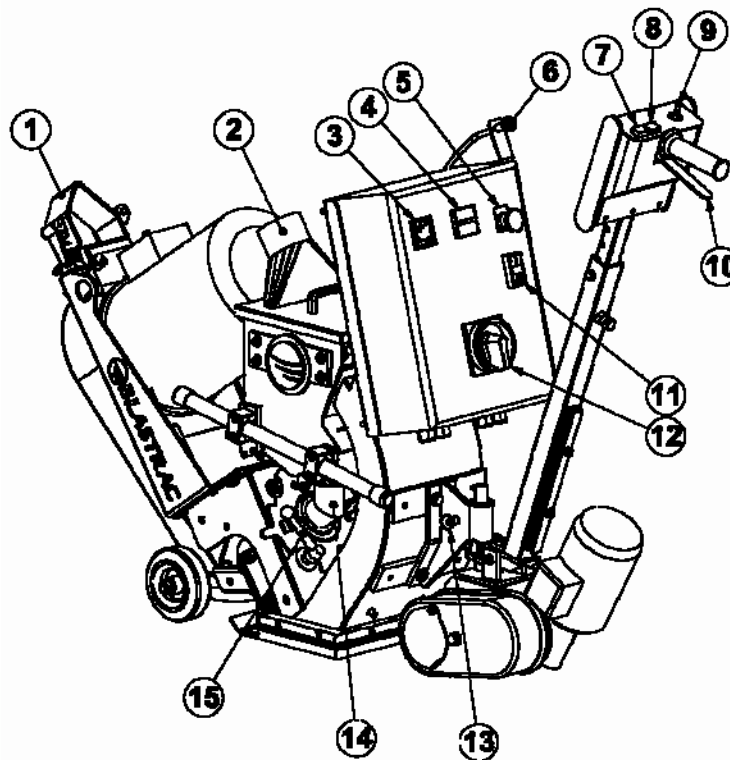
It is important that all persons who are working with or maintaining this machine must read the manual carefully and understand it fully. Keep this manual near to the machine, to enable it be referred to at any time

Only authorized and trained personnel may operate this machine.

2. Machine description

The **Blastrac** blast cleaning machine 1-8DPS Global is a downward blasting machine with a closed abrasive circuit designed for the pre-treatment of horizontal surfaces. The bouncing impact of metallic abrasive onto the surface to be treated thoroughly removes surface contaminants, coats of paint, sealants and thin coatings.

A suitable filter unit must be connected to the machine in order to separate the dust from the abrasive. A specially designed dust collection system ensures dust-free operation of the machine and clean air at the workspace.



- | | | | | | |
|---|---------------------------|----|-------------------|----|--------------------------------|
| 1 | Hose and cable clamp | 7 | Overdrive | 13 | Quick release pin |
| 2 | Dust hose connection pipe | 8 | Move forwards | 14 | Feed spout |
| 3 | Ammeter blast motor | 9 | Speed control | 15 | Clamp lever for cage adjusting |
| 4 | Hour counter | 10 | Travel switch | | |
| 5 | Emergency shutdown | 11 | Blastwheel On/Off | | |
| 6 | Abrasive control cable | 12 | Main switch | | |

3. Safety

Before operating the machine, the personnel must be familiar with the safety instructions given in this manual.

Keep this manual near to the machine, so it can always be consulted.

Safety precautions

The surface to be treated must be swept clean to remove stones, screws etc.

Never use the machine when the surface is not clear and if there is a risk of tripping.

Make sure there is not any water on the surface to be treated.

Don't get disturbed during the activities.

Remove any trailing electrical cables and or dust hoses from the surface to be treated.

Always switch on the dust collector.

Safety regulations

Persons who do not operate the machine are not permitted to stay in the surrounding of the machine. Don't leave children anyway.

Keep the machine original; Use cables who are approved and not damaged. Never remove the earth connecting of the supply cable and machine. Use only cables with earth wire and connectors with a earth connecting.

Connect main power supply cable to a installation with a earth leakage circuit breaker.

Inspect and test the electrical components of the machine regularly. This electrical components have to satisfy to the requirements EN60204-1.

Always call a skilled electrician when you have questions about the safety of the electrical components.

Work on electrical equipment or operating materials may only be undertaken by a skilled electrician or by trained persons under the guidance and supervision of a skilled electrician as well as in accordance with the electrical engineering regulations.

Pull out the main plug during inspections and repairing on the machine.

Never operate the machine when workplace is wet.

Never stay in the rain with the machine.

The following sticker is placed on the machine.



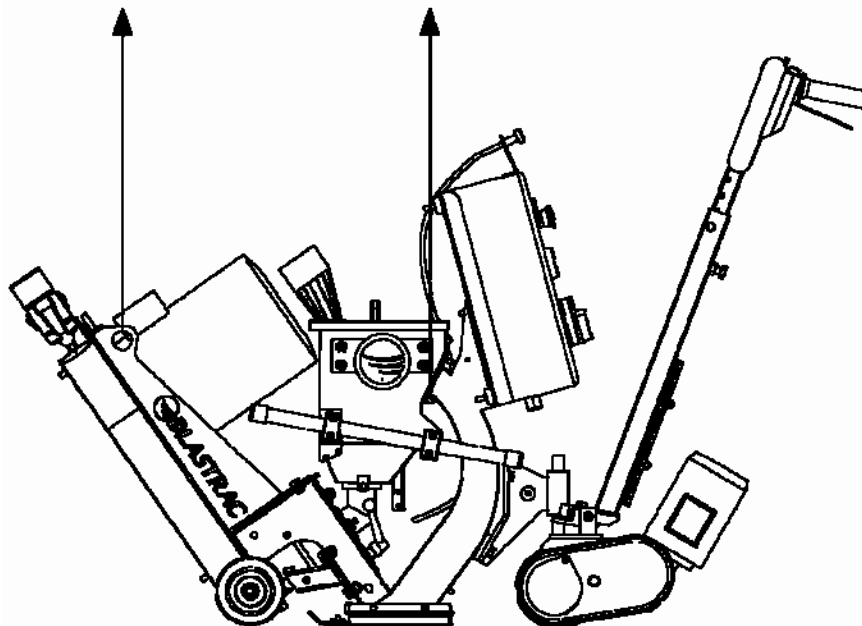
Meanings of these symbols are:

- Ear protection is obliged
- Safety glasses with lateral protection are obliged
- CE-mark on this machine
- Safety shoes obliged
- Consult the manual before operating the machine

Personnel must tie back long hair and not wear loose clothing or jewellery including rings. Wear gloves and dust mask during operating the machine.

Safety instructions

- Abrasive can escape from the sides of the blast head at high speed. Wear safety glasses with lateral protection and close-fitting protective clothing.
- Be very careful with inserting the quick release pin
- The machine, specially the handle grip must be free of fats and has to be dry.
- The dust container / bag of the filter unit must be emptied regularly. Comply with the local waste treatment regulations considering the removed material.
- The weight of the 1-8DPS Global is 155 kg. By transport the machine with a crane or lift, use the lifting eyes of the machine.
- Pay attention that the drive unit do not turn away during lifting the machine.



4. Initial operation

Before using the machine it is of great importance to inspect the machine. It is not permitted to use the machine if the machine safety is not according to the checkpoints below.

Checkpoints power supply

Use only extension cables for extending the main cable that are sized and marked in accordance with the overall power consumption of the machine.
Electrical cables must be fully unwound from their reels.
No damage is permitted for electrical cables.
Use a electrical power supply connection with earth connecting.

Checkpoints of machine

Safety functions and operating functions must work correct.
Check the following parts for damage and wear: blastwheel, feedspout, liners, magnet- and brush sealing.
No loose bolts and nuts permitted
No any damage of electrical components permitted.
Dust hose must be undamaged and the connection must be reliable.
Check the parts of the separator on wear and defects. Remove foreign bodies and dust deposits.



5. Operating

During operating the 1-8DPS Global, the following additional safety instructions must be followed closely.

Before switch on

Check if the distance from magnet to the floor is 8 – 10 mm. Check this height with aluminium strips.

Check the distance from brush sealing to the floor. This may be max. 1 mm.

Fill the separator equally with the selected abrasive up to the bottom of the separator tray. The magnetic valve must be closed whilst doing this.

Connect the blast machine and filter unit with the dust hose. This connection must be reliable.

Connect the power supply cable of the filter unit with the generator. Be sure that electrical power supply is correct.

Switch on the machine

Before switch on the blast machine, switch on the filter unit.

Press the green push button "Blast wheel ON" and check the rotating direction of the blast motor. The correct direction is given with a arrow on the housing of the motor.

Select the speed using the speed control knob. (item 9 of machine description)

When the machine is traveling pull the abrasive control cable to open the magnetic valve. Observe the ammeter. It may indicate the full load amperage. After having blasted aprox. 2 m, close the abrasive valve, stop the machine and check the blasted surface.

If the 'hotspot' is too much on the right, turn clockwise the blastwheel cover a little bit. Loose the clamp lever for cage adjusting (item 15 of machine description) and hammer on the finger to adjust the position. Tighten the clamp lever after adjusting.

Switch off the machine

Close the abrasive valve

Press the red button "Blast wheel OFF"

Press the red button "Drive OFF"

Switch the main switch to position "OFF"

Pull out the connector of the main power supply of the machine.

Switch off the filter unit.

Wait for standstill of all drives before any inspection or maintenance works are started.

6. Maintenance

Changing the liners

Loose the press bolt of the top liner and remove the cover.

Loosen the nuts of the side liners and plenum liner. Take them out at the bottom of the housing.

To mount the liners, keep on the following sequence:

First place the plenum liner and fix it with the nuts.

Place the side liners inside the housing. The sideliners may stick out the body for max. 1mm. Tighten the nuts.

Place the top liner in the housing and make sure that the top liner sits close to the edges of the side liners.

Place the cover and tighten the bolts.

Tighten the pressure bolt of the top liner slightly and press the top liner against the side liners.

Changing the tune-up kit

De tune-up kit consists of the blastwheel, the cage and a bolt.

Remove the feed spout

Remove the cage clamps

Remove the cage and blastwheel cover plate

Block the blastwheel and remove the central fixing bolt

Take the blastwheel out of the housing

Use a new central fixing bolt when mounting a new blastwheel

Place the blastwheel on the hub and tighten the central fixing bolt.

Fix the blastwheel cover plate with 3 nuts and clamping handle.

Insert the control cage in the center and clamp the cage with the control clamps so that the blastwheel can rotate freely

Turn the blastwheel manually. It must rotate freely.

Place the feed spout between the abrasive valve and the cage.

Clean the machine every day with air and non-aggressive materials. Never use a high pressure water cleaner to clean the machine.

Store the cleaned machine in a dry room. Protect the electrical motor from moisture, heat dust and shocks. Remove the abrasive out of the abrasive storage hopper.

All repair work has to be done by qualified Blastrac personnel, this guarantee a save and reliable machine.

Any guarantee on the machine is expired when:

By not using original Blastrac spareparts and abrasive.

When repair work is not done by qualified Blastrac personnel.

When changes, add ons or conversions are undertaken without written permission of Blastrac.

7. Selection of abrasive

Media nr. 2

Is often used when the surface is only subsequently sealed.

- creates fine profiles, e.g. on vacuum concrete and non-glazed tiles
- removes thin layers of rust on steel surfaces
- removes thin layers of paint

Media nr. 3

- creates a fine to medium texture on concrete.
- removes glazing from tiles prior to subsequently coating with antiskid floor sealings
- removes old impregnations and coatings about 1 mm thick

Media nr. 4

Standard abrasive, suitable for about 50-60 % of all applications. Creates a medium profile on concrete. Fulfills the same purpose as Media No. 3 when a higher speed of the machine is required, e.g. on asphalt, in order to keep the thermal load low.

- removes laitance from new concrete
- roughening of smooth concrete or natural stone
- removes coatings with a thickness of 1-3 mm
- cleaning of steel surfaces

Media nr. 5

This media is used to create a coarse profile or to increase the work speed in the case of surfaces hard to treat.

- removes sediments on concrete prior to coating
- removes thick paint coatings or rust from steel surfaces, bridges, tanks, etc.
- removes flexible coatings on parking house decks
- removes road markings and retexturing of asphalt and concrete roads

Media nr. 8

Only as an addition to Media No. 3, No. 4 and No. 5 with maximum 30% content.

Media No. 8 should never be used without blending since otherwise the wear in the machine as a whole would increase disproportionately.

- removes polyurethane coatings
- removes adhesive remnants
- removes rubber deposits
- penetrates coatings hard to remove
- also suitable to be used on steel for extraordinary roughness

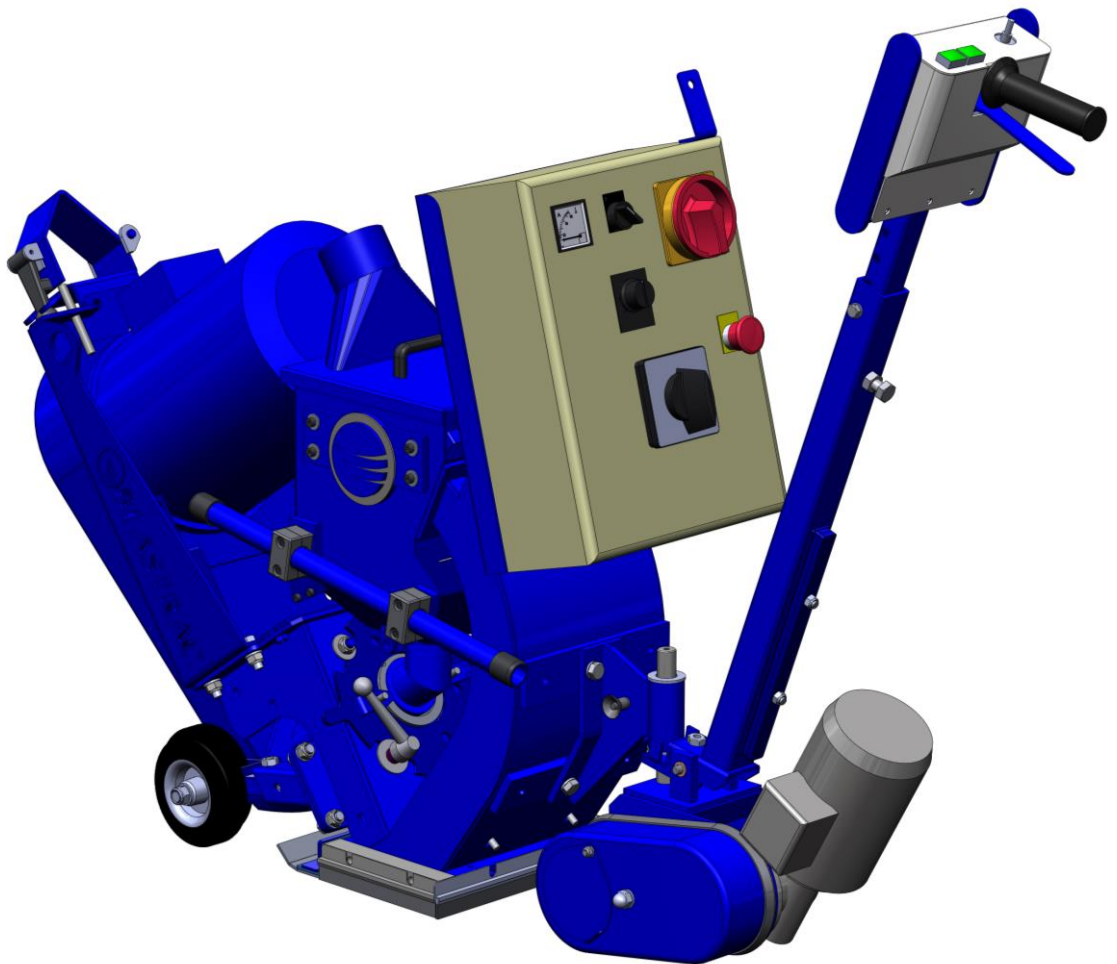
8. Technical data

1-8DPS Global	
Power consumption	3KW
blast motor	5.5kW
	7.5kW
Electrical connection (voltage is given on the control box)	230V SF 50/60Hz 400V / 50Hz 400V / 60Hz
Blast width	200 mm
Drive speed	0 – 23 m/min
Length	1700 mm
Width	380 mm
Height	1050 mm
Weight	155 kg
Noise level (under load)	85dBa
Vibration level	1.6 RMS Allows 18.8 hrs. of working with the mentioned equipment without having to use anti vibration precaution measures.
Dust hose connection	Ø75 mm



1-8DPS Global

*1-8DPS30
1-8DPS55
1-8DPS75
Version 1.2*



EC DECLARATION OF CONFORMITY

in accordance with Appendix II sub A of Directive 2006/42/EC

BLASTRAC B.V.

Utrechthaven 12
NL - 3433 PN NIEUWEGEIN
Tel: 0031 (0)30 601 88 66
Fax: 0031 (0)30 601 83 33
Info@Blastrac.nl
The Netherlands

Declare under our sole responsibility that the machine as described below
Conforms with the Health and Safety requirements of the European Directive
of the machine Safety.

In case of changes to the machine without our written authorization this declaration loses
its validity.

Model: *BLASTRAC 1-8DPS Global* **Serial number:**

1. satisfies the conditions set out in the Machine Directive (Directive 2006/42/EC);
Low voltage directive (2006/95/EC, as last amended; EMC directive 2004/108/EC,
as last amended)
2. satisfies the following harmonized standards:
NEN-EN 349, NEN-EN 418, NEN-EN 294 and NEN-EN 60204

Nieuwegein



Michiel Kalisvaart



Index

1. Spare parts	04
2. Maintenance box	12
Contact	



1. Spare parts

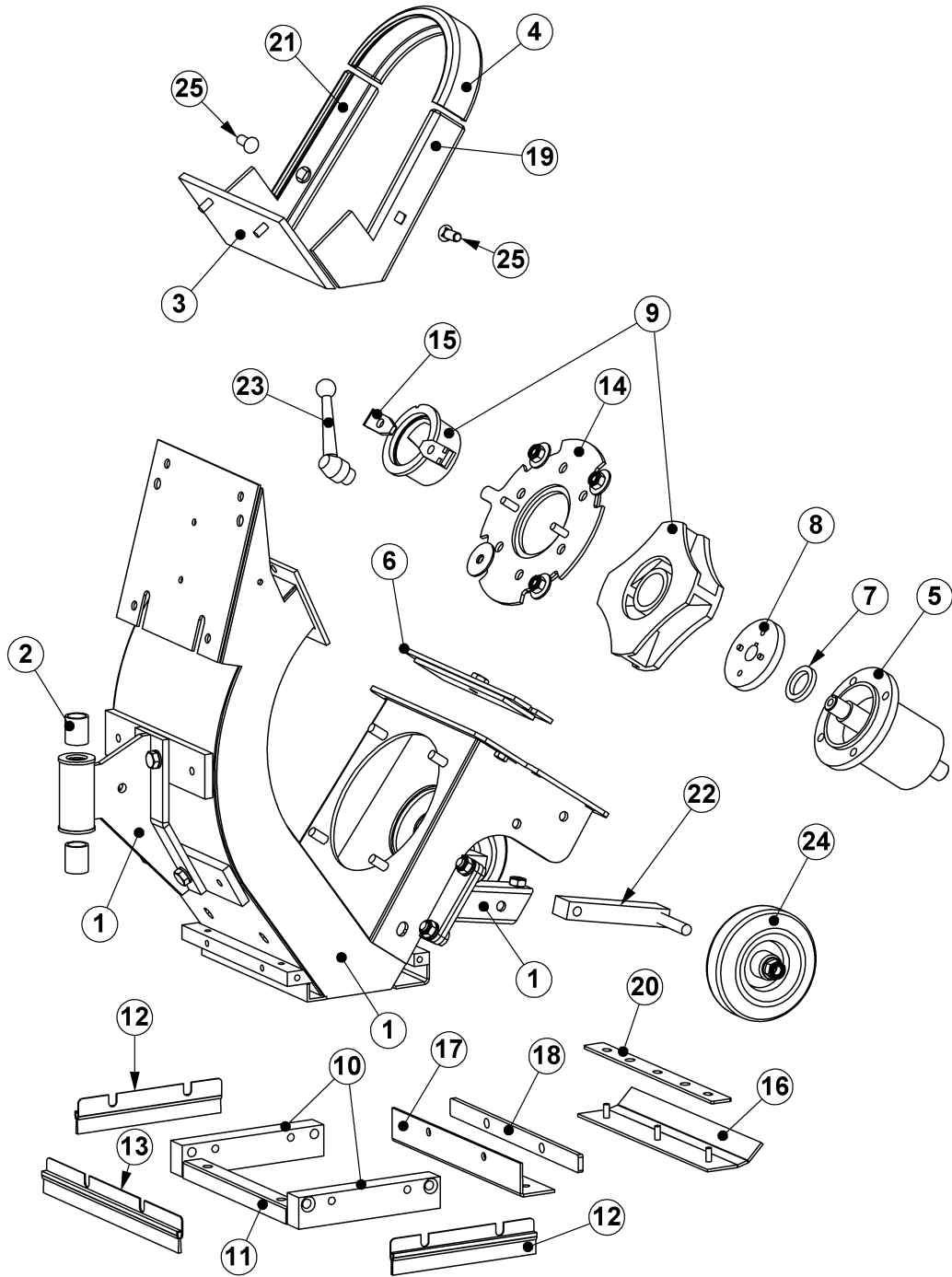


Fig. 01

Fig. 01

Item	Part number	Description	Remarks	Qty.
1	B21001	Blasthousing		1
2	004587	Oilite bush		2
3	B21009	Plenum bottom liner		1
4	B21044	Top liner		1
5	979085	Bearing unit		1
6	B21008	Blasthousing cover		1
7	976317	Felt seal		1
8	976310	Hub		1
9	B21637	Tune up kit 6 1/2"		1
10	969780	Side magnet		2
11	969763	Front magnet		1
12	001624	Side brush		2
13	001623	Front brush		1
14	E06437	Adjustable blastwheel cover		1
15	9700120	Cage clamp		1
16	969212	Skid seal		1
17	004573	Skid seal		1
18	971427	Skid retainer		1
19	969580	Side liner LH		1
20	971428	Skid retainer		1
21	969581	Side liner RH		1
22	969217	Rear wheel bar		2
23	E06921	Clamp lever M10		1
24	974963	Wheel		2
25	969586	Liner screw M10x25		2

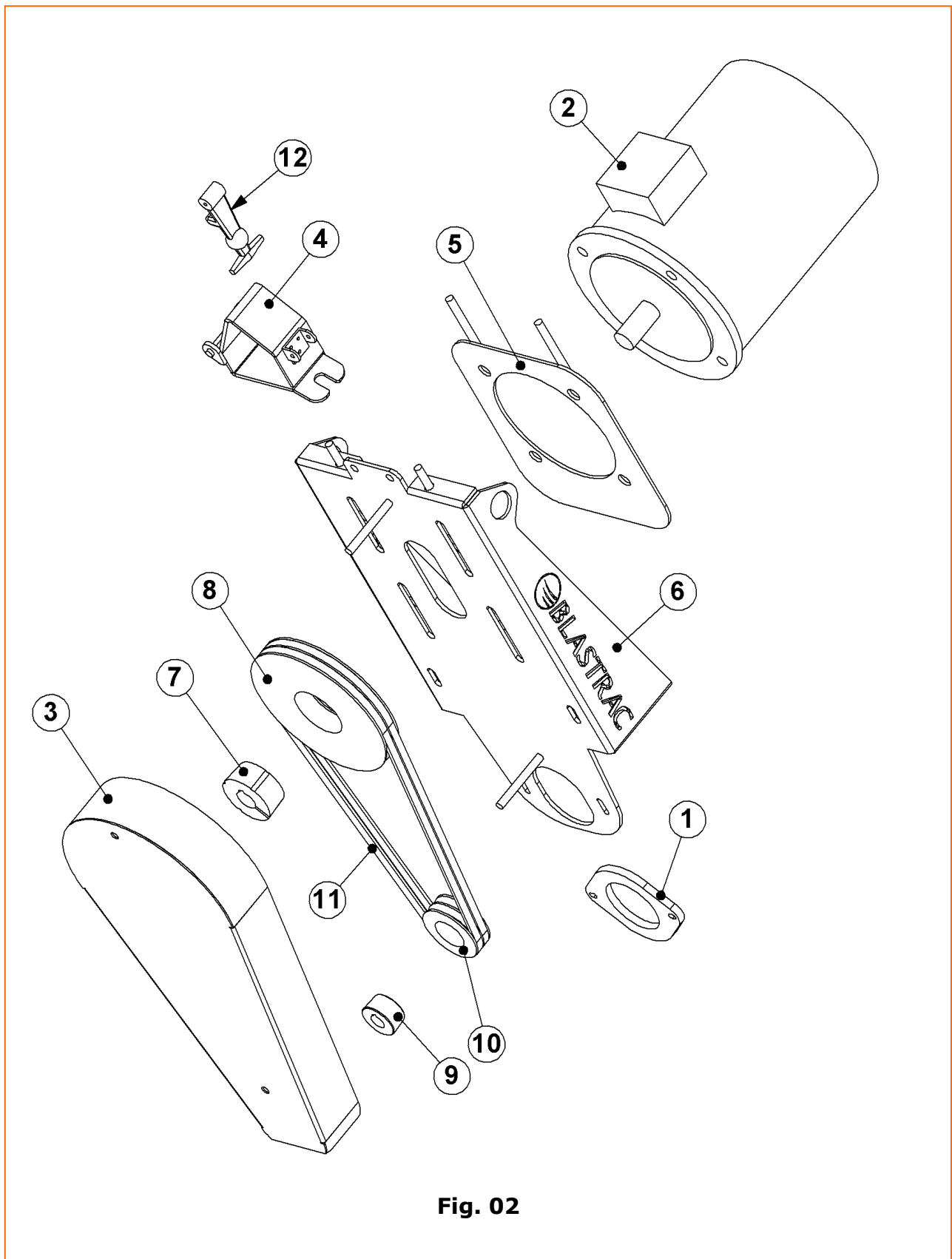


Fig. 02

Fig. 02

Item	Part number	Description	Remarks	Qty.
1	E06434	Dust cover	All types	1
2	E03034	3 kW motor	1-8DPS30	1
	E06360	5.5 kW motor	1-8DPS55	1
	E06118	7.5 kW motor	1-8DPS75	1
3	E06387	Belt guard	1-8DPS55 & 1-8DPS75	1
	E06939	Belt guard	1-8DPS30	1
4	E06392	Hose clamp	All types	1
5	E06394	Fill up plate blast motor	1-8DPS55 & 1-8DPS75	1
	E03028	Fill up plate blast motor	1-8DPS30	1
6	E06398	Motor bracket	1-8DPS55 & 1-8DPS75	1
	E06399	Motor bracket	1-8DPS30	1
7	E10415	Taper lock	1-8DPS55 & 1-8DPS75	1
	E06937	Taper lock	1-8DPS30	1
8	E06160	Pulley	All types	1
9	E03518	Taper lock	All types 50 Hz	1
	E00629	Taper lock	All types 60 Hz	1
10	976659	Pulley	All types 50 Hz	1
	E00620	Pulley	All types 60 Hz	1
11	E06131	V-belt	1-8DPS55 & 1-8DPS75 50 Hz	2
	E06182	V-belt	1-8DPS55 & 1-8DPS75 60 Hz	2
	E06938	V-belt	1-8DPS30- 50 & 60Hz	2
12	500-1195	Rubber latch assy	All types	1

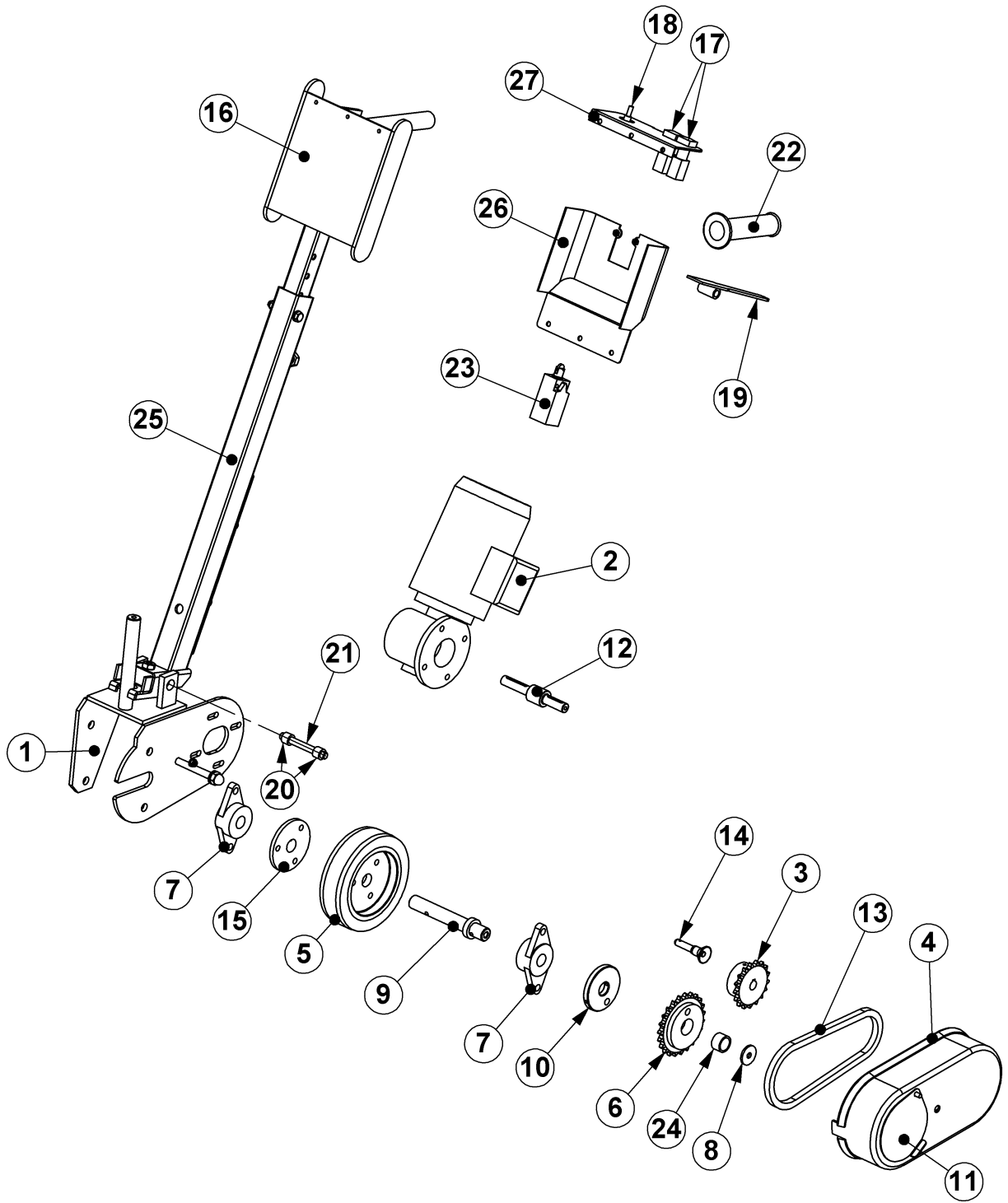


Fig. 03

Fig. 03

Item	Part number	Description	Remarks	Qty.
1	E03024	Drive motor bracket		1
2	E03026	Drive motor		1
3	979076	Drive motor sprocket		1
4	979067	Chain guard		1
5	969409	Drive wheel		1
6	979077	Drive sprocket		1
7	976818	Bearing		2
8		Washer		1
9	971621	Drive shaft		1
10	970015	Drive plate		1
11	976323	Cover for drive pin		1
12	E03035	Drive shaft		1
13	E00237	Chain 1/2" ISO		0.56M
14	478198	Quick release pin		1
15	970016	Wheel plate		1
16	E06403	Handle top part		1
17	E00867	switch		2
18	E00866	Potentiometer		1
19	E00743	Switch lever		1
20	976817	Sleeve bearing bush		2
21	970108	Swivel pin		1
22	453290	Soft grip Ø25		1
23	454796	Limit switch		1
24	979087	Sleeve bearing bush		1
25	E06405	Handle stem		1
26	E00740	Control box		1
27	E00741	Control box top plate		1

Fig. 04

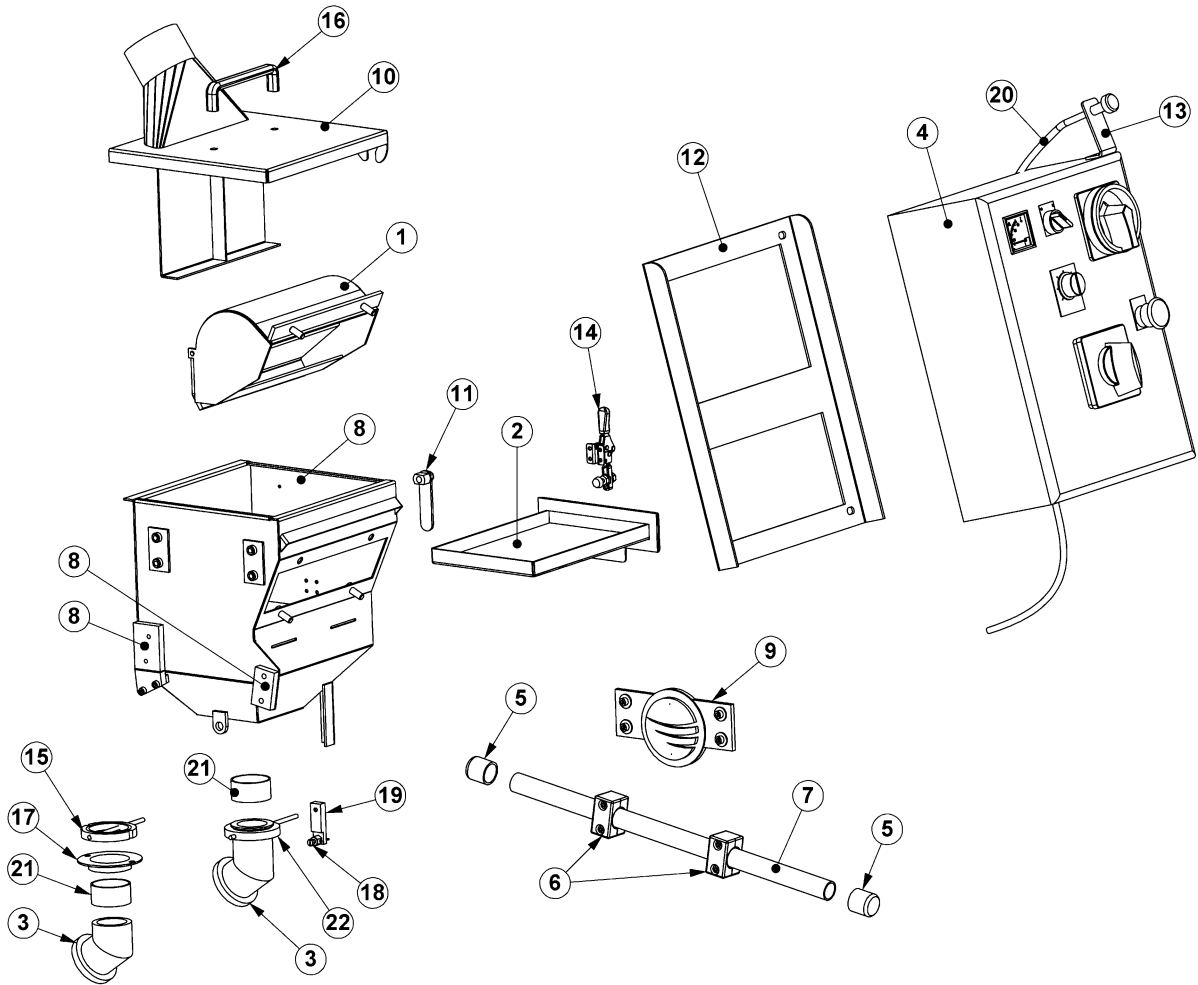


Fig. 04

Item	Part number	Description	Remarks	Qty.
1	B21003	Deflector		1
2	E06595	Separator tray		1
3	967577	Feed spout	1-8DPS30 & 1-8DPS55	1
4	E06142/ 1-8DPS30	Electro box complete 1-8DPS30	1-8DPS30	1
	E01535	Elektro box special 220V/SF	1-8DPS30 220V/SF 50/60Hz	1
	E06142/ 1-8DPS55	Electro box complete 1-8DPS55	1-8DPS55	1
	E06142/ 1-8DPS75	Electro box complete 1-8DPS75	1-8DPS75	1
5	E00368	Cable guide- end		2
6	DG39	Pipe clamp Ø25		2
7	DG41	Cable tube		1
8	E06418	Separator basic		1
9	E06436	Logo Blastrac with mounting strip		1
10	E06419	Separator lid		1
11	E06531	Locking lever		1
12	E06912	Adapter plate elektro box		1
13	B21021	Control cable bracket		1
14	03600001	Clamp/Toggle	1-8DPS30	1
15	973322	Magnetic valve	1-8DPS75	1
16	970385	Handle		1
17	B21035	Adapter magnetic valve	1-8DPS75	1
18	491726-1	Nipple & screw		1
19	959647	Valve lever		1
20	975100	Control cable		1
21	971500	Feed spout seal ring		1
22	969819	Magnetic valve	1-8DPS30 & 1-8DPS55	1

3. Maintenance box

Maintenance box 1-8DPS55 50Hz / 1-8DPS75 50Hz: E07005
Maintenance box 1-8DPS55 60Hz / 1-8DPS75 60Hz: E07006
Maintenance box 1-8DPS30 50Hz & 60Hz: E07007

Item	Maintenance box 1-8DPS55/75 50Hz E07005		Qty.
1	E06131	V-belt	2
4 - 25		See list below	

Item	Maintenance box 1-8DPS55/75 60Hz E07006		Qty.
1	E06182	V-belt	2
4 - 25		See list below	

Item	Maintenance box 1-8DPS30 50/60Hz E07007		Qty.
1	E06938	V-belt	2
4 - 25		See list below	

Item	Part number	Description	Remarks	Qty.
4	001030	Metal box		
5	969580	Left liner		
6	969581	Right liner		
7	B21044	Top liner		
8	B21637	Tune-up kit 6"		
9	975100	Abrasive control cable		
10	004573	Rear seal rubber		
11	969212	Skid seal		
12	001624	Side brush		2
13	001623	Front brush		1
14	001017	Open-end spanner 10/11		
15	001040	Open-end spanner 13/17		
16	001019	Open-end spanner 17/19		
17	000144	Ratchet spanner 1/2"		
18	000145	Box spanner 8mm		
19	000146	Box spanner 13mm		
20	001043	Box spanner 17 mm		
21	001032	Screwdriver 5,5 x 100		
22	001035	Insulated screwdriver		
23	001056	Water pump pliers		
24	001000	Hammer		
25	001031	Safety glasses		



Blastrac bv
Utrechthaven 12
3433 PN Nieuwegein
Netherlands
+31(0)30-6018866
+31(0)30-6018333

Project description 1-8DPS30 3KW 230V SF MKII ULCSA

Drawing number PJ11.01067.10

Blastrac number E01535-1/ULCSA



Power supply 230VAC 1ph 60Hz

Input lead

Control Voltage 230VAC 60Hz

Year of Manufacturing 2010

Remarks As built

Note: Production check Parts for Aproval Label

Created on by hvandenbrink

Edit date 16-9-2015

by KR

Number of pages 16

			Date	2-1-2012	Project name:	1-8DPS30 3KW 230V SF ULCSA E01535-1/ULCSA		Page description:	Customer:	Blastrac BV	=	
			Ed.	HVDB				Titelblad / voorblad	Drawing number:	PJ11.01067.10	+	
			Appr								Page	1
Modification	Date	Name	Last print	16-9-2015								

WIRE COLOR

Main Voltage (200-230Vac)

<u>Phase</u>	<u>Colors</u>
L	- Black
N	- White
Earth / PE	- Yellow/Green

Control Voltage

Phase (230VAC)	-Black
Hook-up wire	- Black
Neutral (230VAC)	- white

Frequency inverter and Varispeed V7

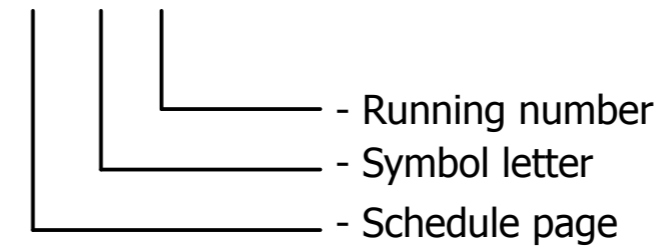
Hook-up wire	- dark blue
--------------	-------------

AWG - Metric

AWG 12	- 4.0mm ²
AWG 14	- 2.5mm ²
AWG 18	- 1.0mm ²
AWG 22	- 0.5mm ²

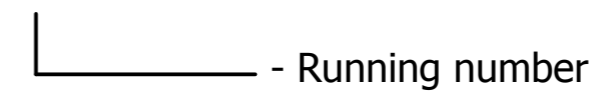
SYMBOL CODE

11 F 11



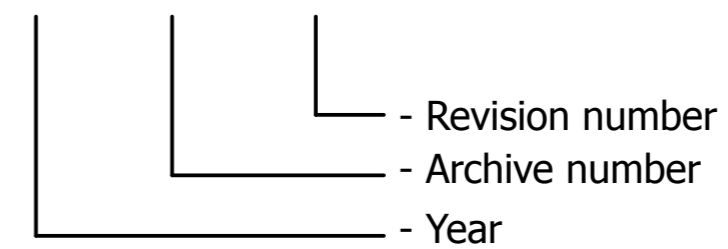
CORE CODE

11 11



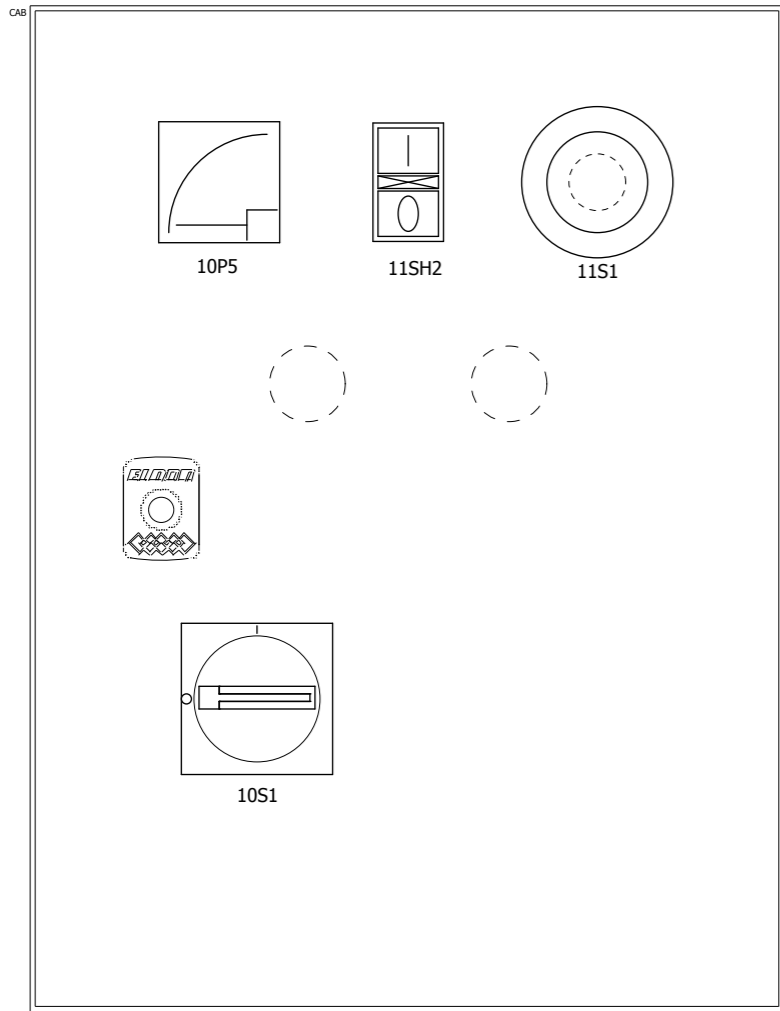
DRAWING NUMBER

PJ##.####.##

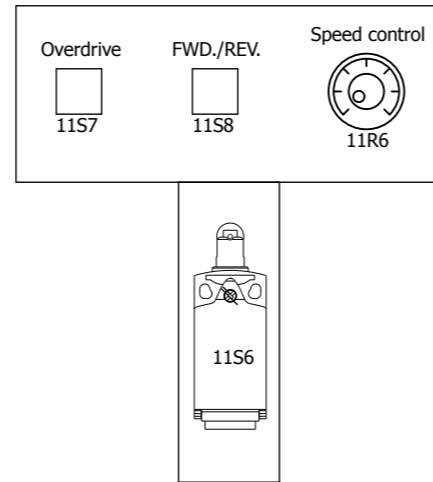


	auxiliary contact	hulpcontact		signal light	signaallamp		Safety fuse	smeltveiligheid
	Power contact	vermogenscontact		horn	hoorn		Fused switch, three-pole	schakelbare scheid
	NO contact, opens with time delay	maakcontact, vertraagd open		apm.meter	amperemeter		Fused disconnect, three-pole	scheid "klapbak"
	NO contact, closes with time delay	maakcontact, vertraagd sluitend		runninghour counter	urenteller		Main switch	hoofdschakelaar
	NC contact, opens with time delay	verbreekcontact, vertraagd open		transformer	transformator		Circuit breaker, single-pole	installatieautomaat 1-polig
	NC contact, closes with time delay	verbreekcontact, vertraagd sluitend		Contactor coil relay coil	spoel		Circuit breaker, two-pole	installatieautomaat 2-polig
	Pushbutton rebound	drukknop terugverend		Contactor/relay coil, with pick-up delay	Spoel met opkomvertraging		Circuit breaker, three-pole	installatieautomaat 3-polig
	Pushbutton locking	drukknop blijvend		Contactor/relay coil, with drop-out delay	spoel met afvalvertraging		Power circuit breaker motor overload switch with switch mechanism	motorbeveiligingsschakelaar
	Rotary switch rebound	tip draaischakelaar		Contactor pulse coil relay pulse coil,	spoel puls		Valve	elektrisch bediende klep
	Rotary switch locking	draaischakelaar		Tube light	TL verlichting		Resistor with movable contact	regelbare weerstand
	Emergency stop rotary unlock	noodstop met draaibare vrijgave		Resistor / Heating	weerstand verwarming		Terminal	rijgklem
	Thermostatic switch	thermostaat hygrostaat		Socket	wandcontactdoos		Terminal with fuse	rijgklem met zekering
	Pressure switch	drukschakelaar		Current transformer	stroomtransformator		Rectifier	gelijkrichter
	Limit switch	eindschakelaar						
	Proximity switch	naderingsschakelaar						

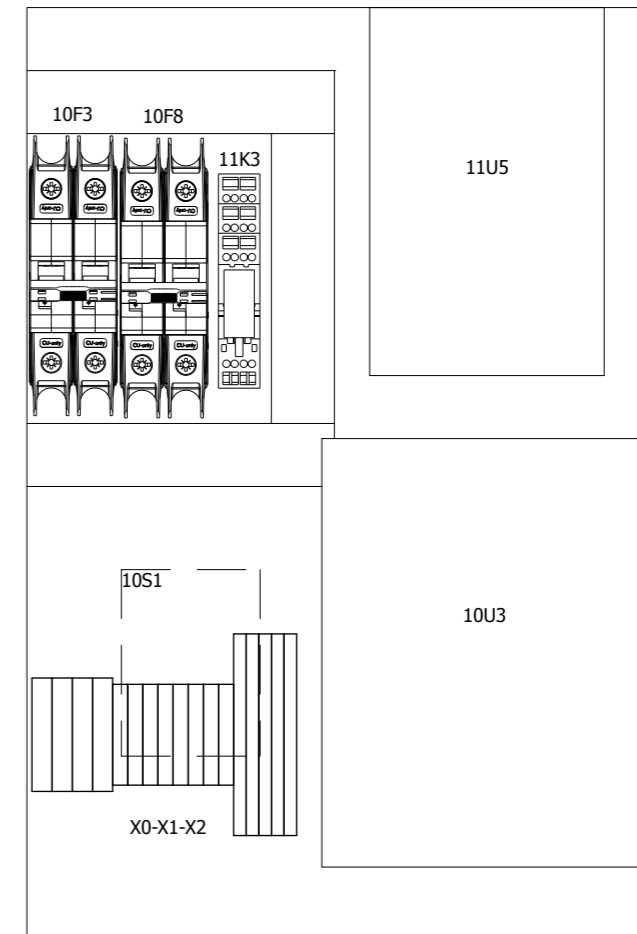
FRONT VIEW



STEERING-UNIT



MOUNTING PLATE



Modification	Date	Name	Last print	16-9-2015
			Date	30-6-2014
			Ed.	PH
			Appr	

Project name:
1-8DPS30 3KW 230V SF ULCSA
 E01535-1/ULCSA

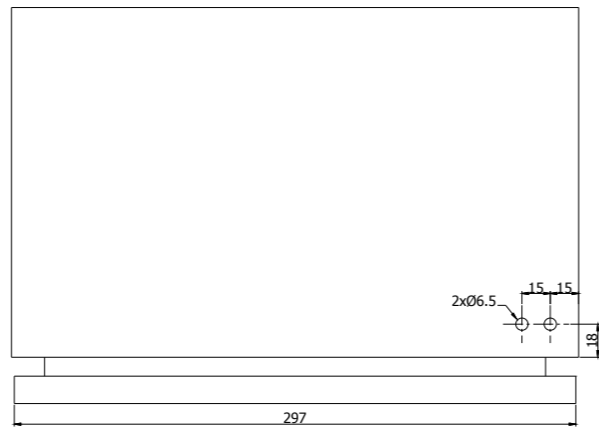


Page description:
Panel layout

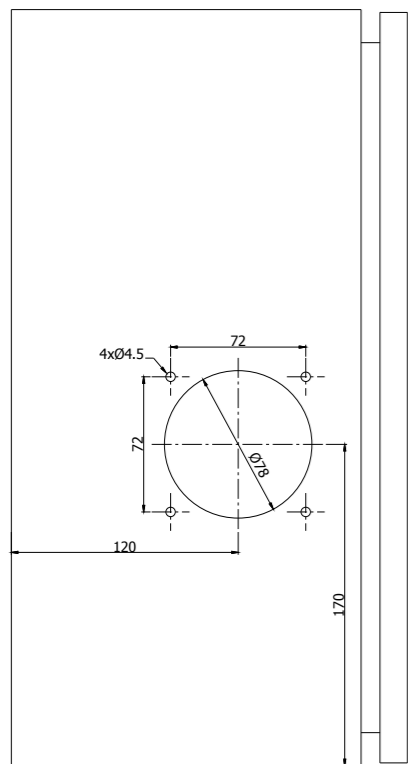
Customer:
Blastrac BV

Drawing number:
PJ11.01067.10

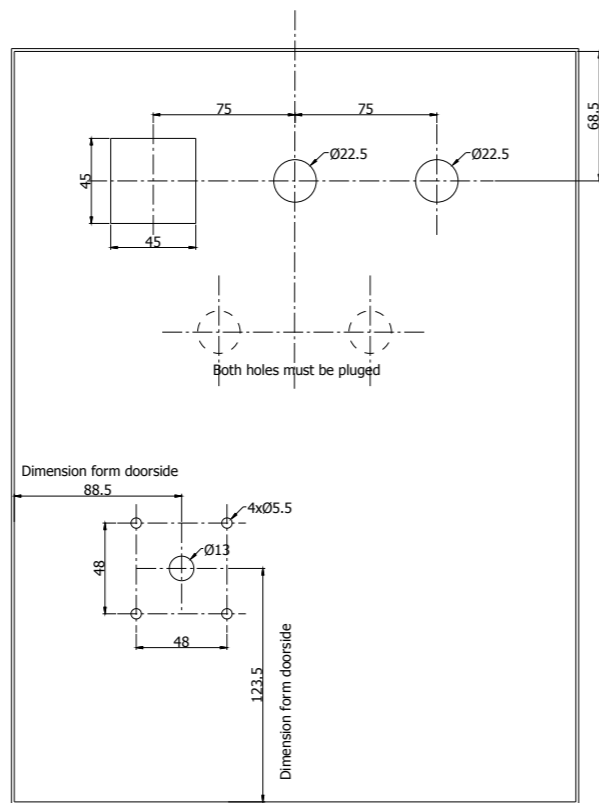
TOP VIEW



LEFT-HAND VIEW
FAN side

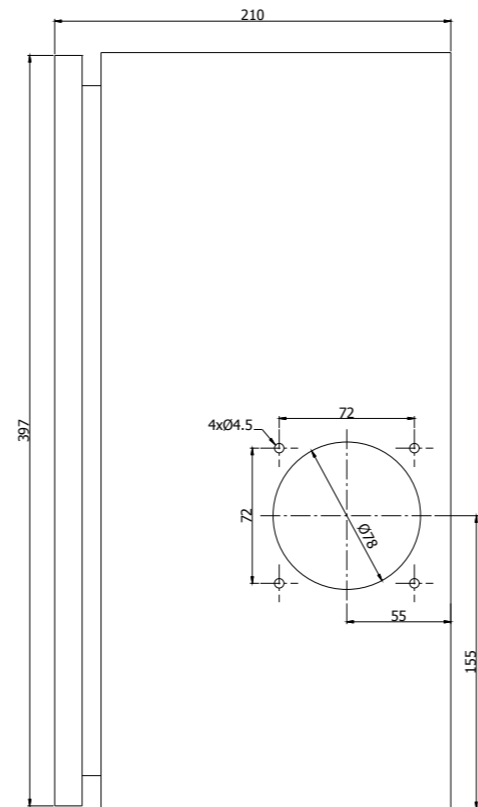


FRONT VIEW

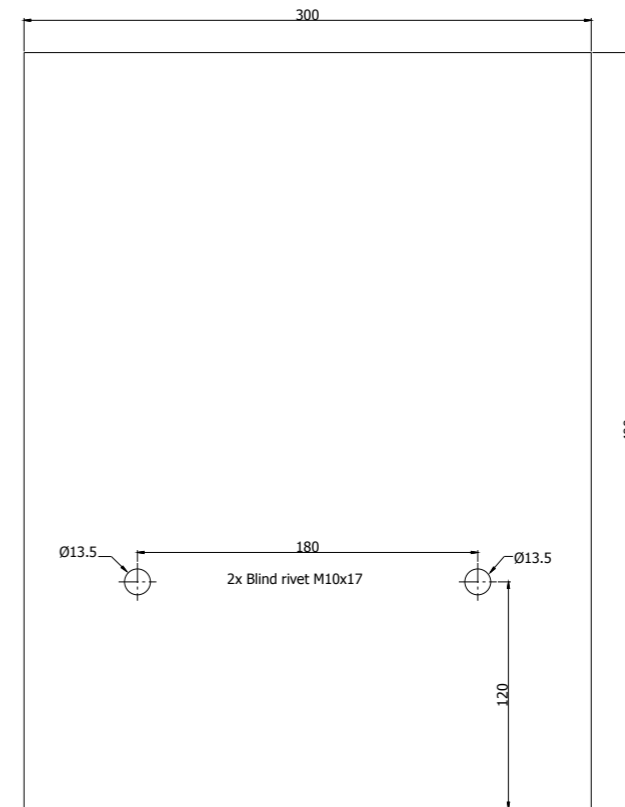


Dimensions form doorside

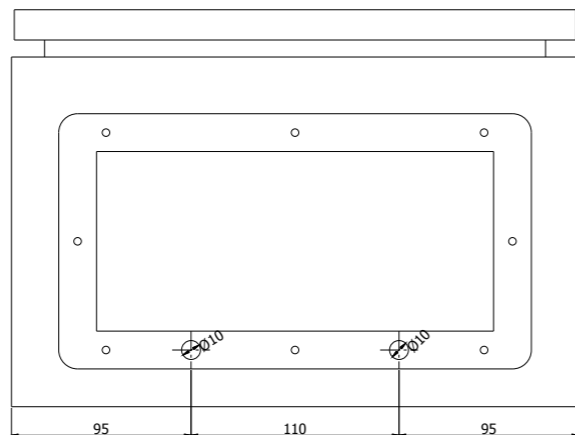
RIGHT-HAND VIEW



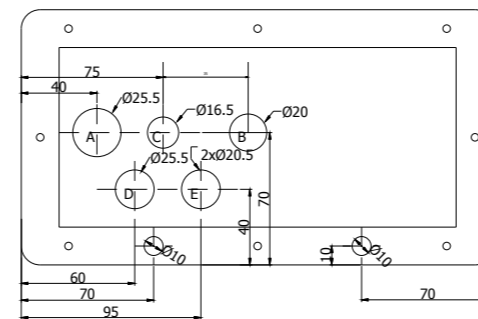
REAR VIEW



BOTTOM VIEW



UNIONPLATE



A= SUPPLY
B= STEERING UNIT
C= EARTH
D= BLASTMOTOR
E= DRIVE MOTOR

Date	15-10-2012
Ed.	
Appr	
Last print	16-9-2015
Modification	Date
	Name

Project name:	1-8DPS30 3KW 230V SF ULCSA
	E01535-1/ULCSA

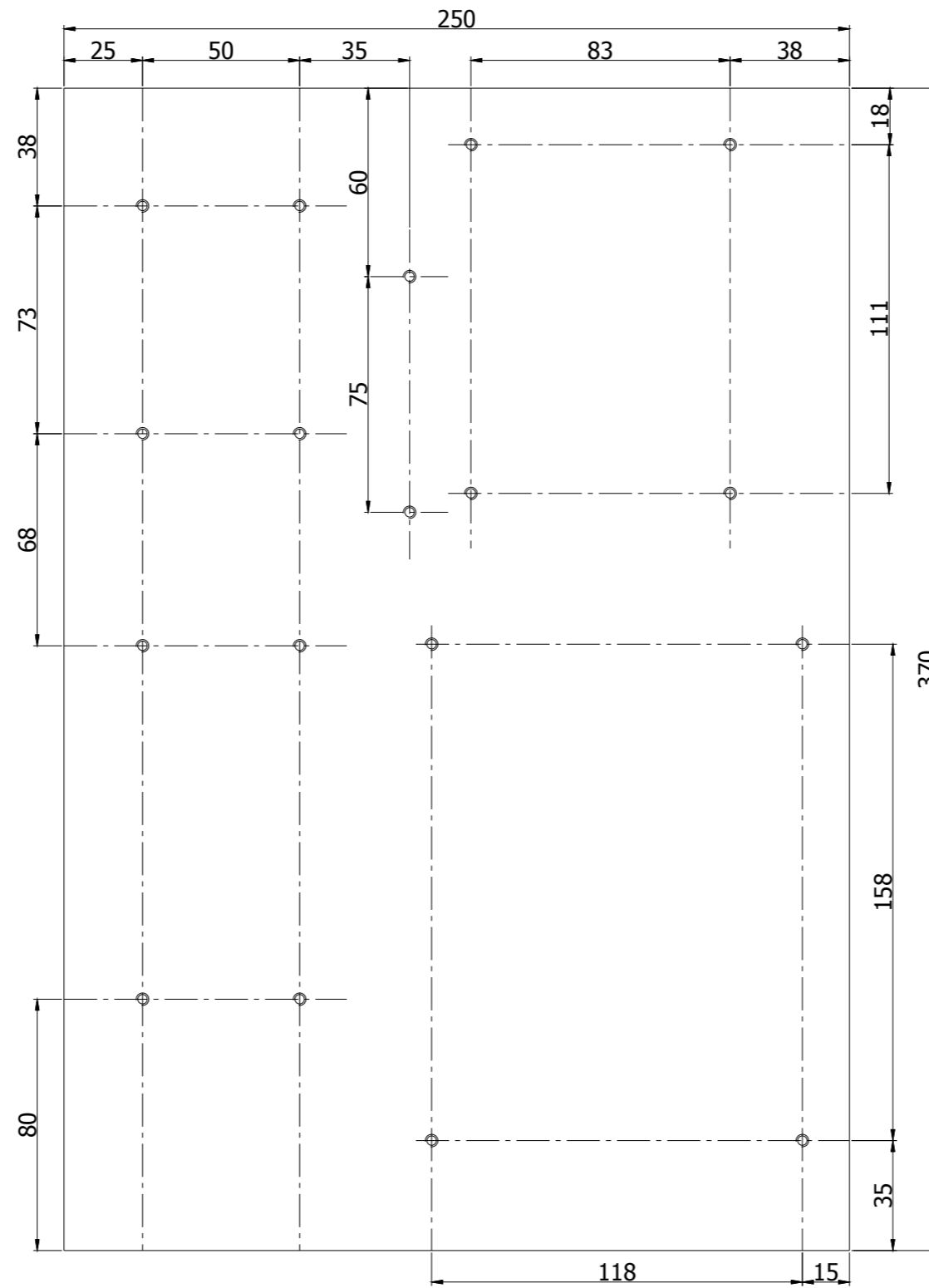


Page description:	Panel layout dimensions
-------------------	-------------------------

Customer:	Blastrac BV
Drawing number:	PJ11.01067.10

=	
+	
Page	5a

MOUNTING PLATE



All tapped holes M4

			Date	25-2-2011
			Ed.	
			Appr	
Modification	Date	Name	Last print	16-9-2015

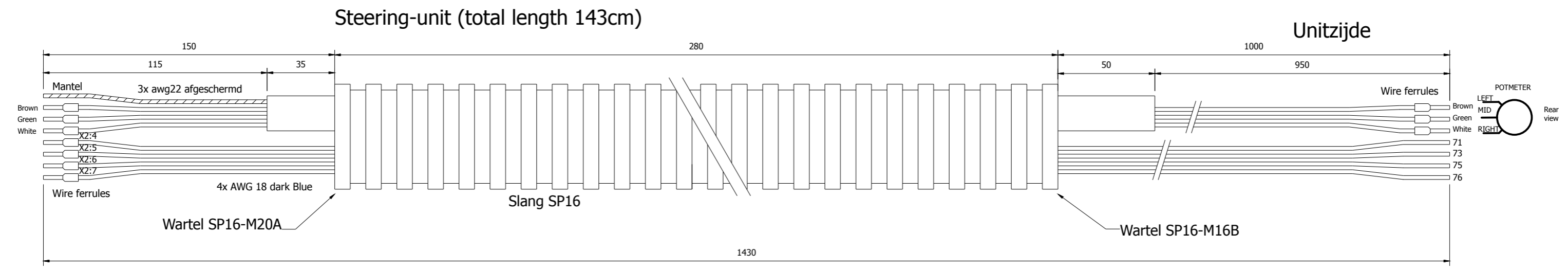
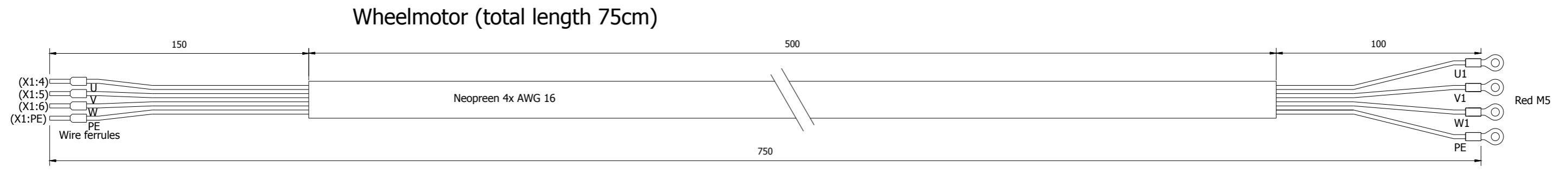
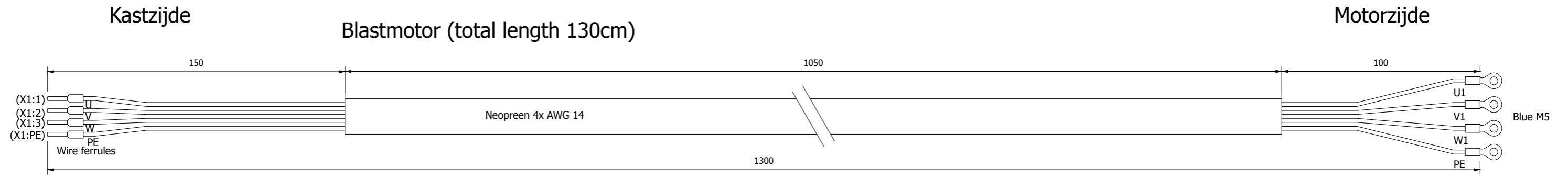
Project name:	1-8DPS30 3KW 230V SF ULCSA
	E01535-1/ULCSA



Page description:	Mountingplate dimensions
-------------------	--------------------------

Customer:	Blastrac BV
Drawing number:	PJ11.01067.10

=	
+	
Page	5b



Date	26-7-2013
Ed.	
Appr	
Last print	16-9-2015

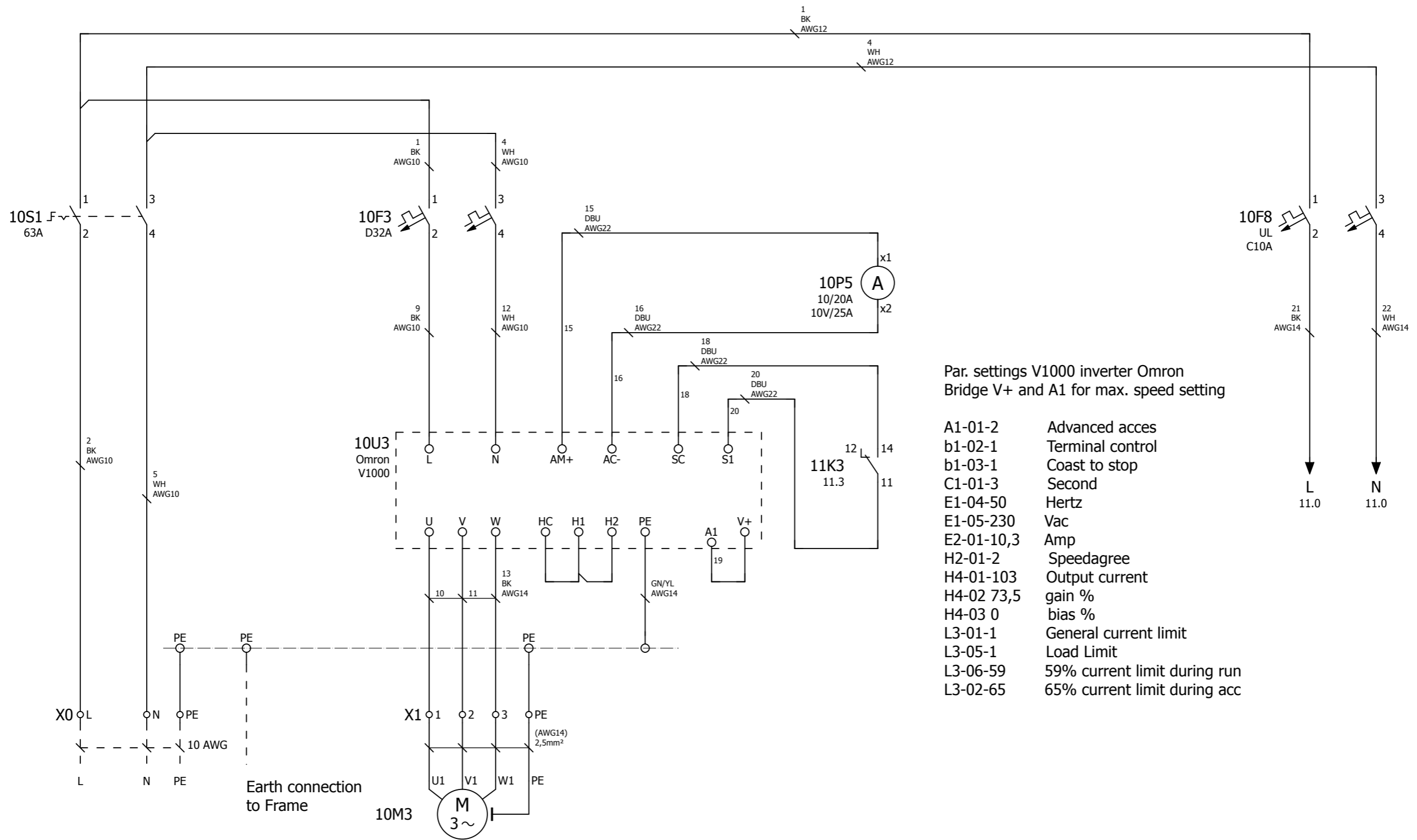
Project name:	1-8DPS30 3KW 230V SF ULCSA
	E01535-1/ULCSA



Page description:	Cableset
-------------------	----------

Customer:	Blastrac BV
Drawing number:	PJ11.01067.10

=	
+	
Page	6



Par. settings V1000 inverter Omron
 Bridge V+ and A1 for max. speed setting

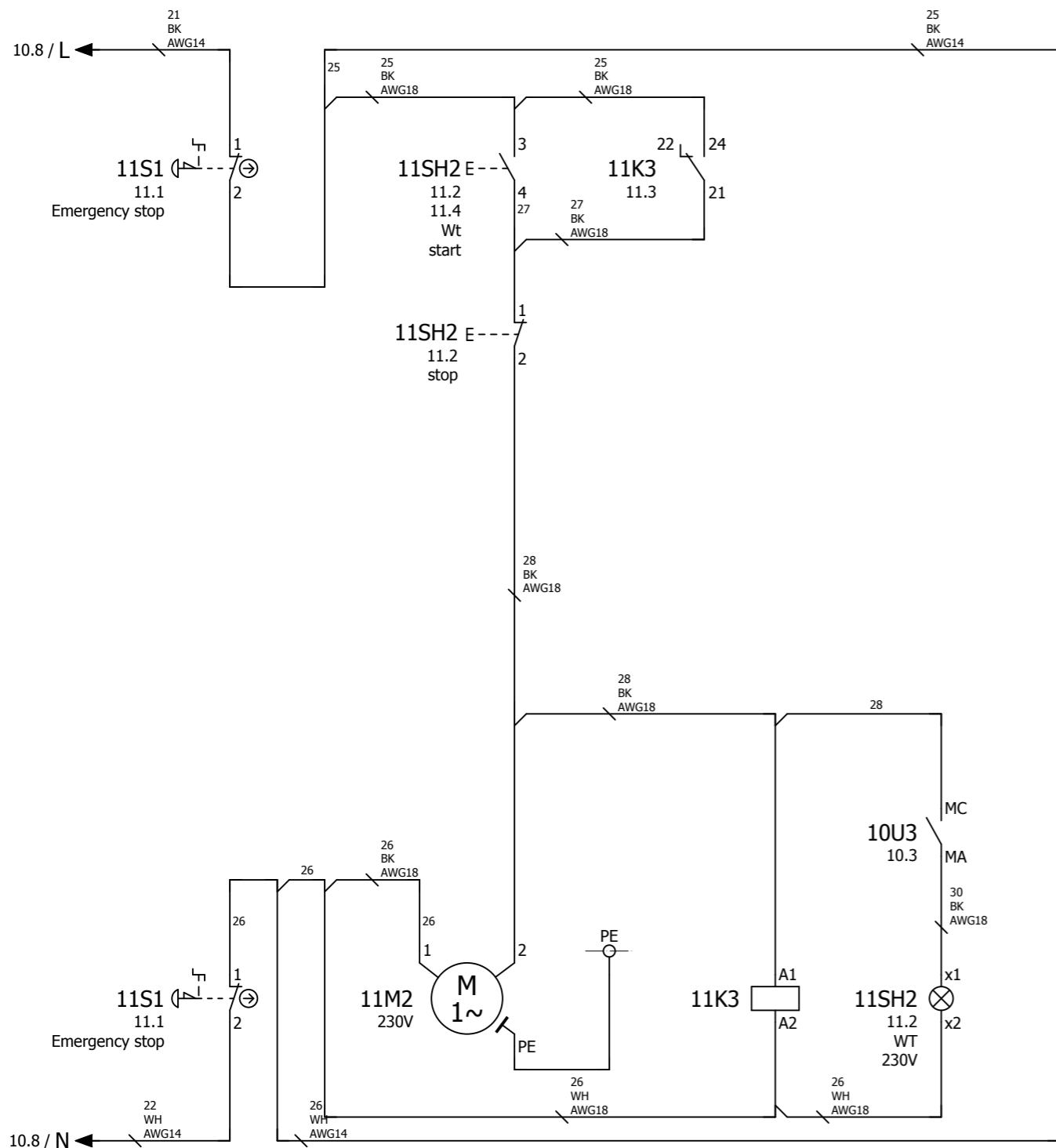
- A1-01-2 Advanced acces
- b1-02-1 Terminal control
- b1-03-1 Coast to stop
- C1-01-3 Second
- E1-04-50 Hertz
- E1-05-230 Vac
- E2-01-10,3 Amp
- H2-01-2 Speedegree
- H4-01-103 Output current
- H4-02 73,5 gain %
- H4-03 0 bias %
- L3-01-1 General current limit
- L3-05-1 Load Limit
- L3-06-59 59% current limit during run
- L3-02-65 65% current limit during acc

Supply
 230V 1ph 60Hz

Blast motor
 4Hp/230V/11.8A
 Connection in Delta

Control Voltage
 230V 1ph 60Hz

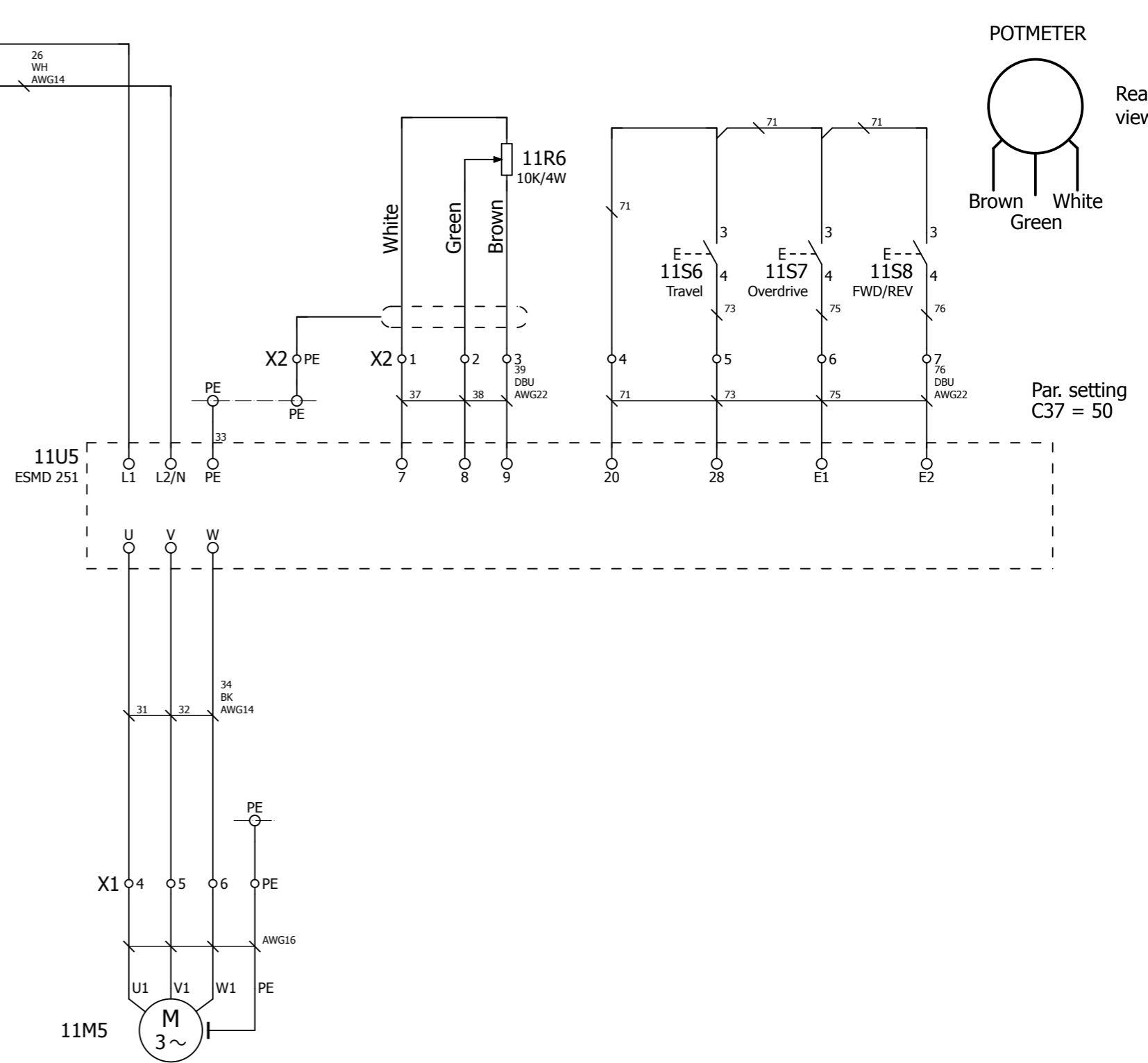
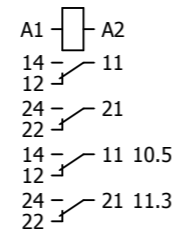
MC — MA 11.4



FAN

Motor running

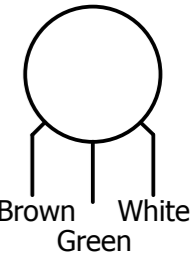
Motor running



Drive motor
0.3Hp/230VAC/1.6A
Connect as Delta

Controls
Steering-unit

POTMETER



Rear view

Par. setting
C37 = 50

Date	17-7-2014
Ed.	HVDB
Appr	
Last print	16-9-2015

Project name:	1-8DPS30 3KW 230V SF ULCSA
	E01535-1/ULCSA



Page description:	Control current
-------------------	-----------------

Customer:	Blastrac BV
Drawing number:	PJ11.01067.10

=	
+	
Page	11

Parts list

device tag	Quantity	designation	Type number	Brand	Blastrac number
CAB	1	Wall mount encl 400x300x210MM IP66	MAS 0403021SPECIAL	Eldon	E05174
CAB	1	Cable gland M20*1.5 polyamide 50.620	WARTEL PA M20*1.5	Jacob	E07887
CAB	2	Cable gland M25*1.5 polyamide 50.625	WARTEL PA M25*1.5	Jacob	E07978
CAB	2	Cable gland nut M20*1.5 polyamide 50.220PA	WARTELMOER PA M20	Jacob	E07889
CAB	2	Cable gland nut M25*1.5 polyamide 50.225PA	WARTELMOER PA M25	Jacob	E07979
CAB	1	FITTING @16*M20	SP16/M20/A	Adaptaflex	E07839
CAB	1	FITTING @16*M16 DRAAIBAAR	SP16/M16/B	Adaptaflex	E05178
CAB	1	Cable gland nut M16*1.5 brass, nickel-plated	WARTELMOER M16*1.5	Jacob	E00405_1
CAB	2	Blindklinkmoer M10	POPBC-1Z-M10X17 CK16	Generic	E05180
CAB	1	overdrive-forward zelfkl.60*10 witte pl/zw letter	RESOPAL 2-20DT/1	Generic	E07836
CAB	1	speed control zelfkl.45*10 witte pl/zw letter	RESOPAL 2-20DT/2	Generic	E07837
CAB	1	Cable gland nut M20*1.5 brass, nickel-plated	WARTELMOER M20*1.5	Jacob	E00406_1
CAB	1	zelfkl.:BLASTWHEEL MAX 11A	RESOPAL 60*14 ZP/WL 1	Generic	E07980
CAB	1	Spiraalsl. wit 15-80MM P4 per mtr.	SPIRAALSLANG 15-80MM	Generic	E07901
CAB	1	Mount.drain BxH 25x60 MM vpp=60	T1-E 25X60 MOUNT.DRAIN	Generic	E07972
CAB	1	M.rail galvanized,7,5x35MM 2M	TS35 MOUNT.RAIL GROOVE	Generic	E07835
CAB	20	Mont. bundelb. 98*2,5mm. wit a 100st.	T-18R N 100 WIT		E07981
CAB	2	Stuurstroomkabel pvc 3*0.35 UL/CSA	3X AWG22/7		E10733
CAB	7	Internal wire blue AWG12 4mm2 UL-CSA	AWG 12 BLAUW	LAPP	E08026
CAB	7	Internal wire black AWG12 4mm2 UL-CSA	AWG 12 ZW	LAPP	E08110
CAB	1	Internal wire yellow/green AWG14 2.5mm2 UL-CSA	AWG 14 GE/GN	LAPP	E07974
CAB	4	Internal wire black AWG14 2.5mm2 UL-CSA	AWG 14 ZWART	LAPP	E07843
CAB	5	Internal wire black AWG18 1.0mm2 UL-CSA	AWG 18 ZWART	LAPP	E07845
CAB	16	Internal wire darkblue AWG22 0.5mm2 UL-CSA	AWG 22 D BL.	LAPP	E08012
CAB	50	Ferrule 0.5mm2 white insulated	G 488 MONT.ADERHULS	Calpe	E07848
CAB	50	Ferrule 1mm2 red insulated	G 490	Calpe	E07849
CAB	25	Ferrule 2x1mm2 red insulated	G 490-TWIN MONT.A.H.	Calpe	E07850
CAB	5	Ferrule 1,5mm2 black insulated	G 491 MONT.A.H.	Calpe	E07851
CAB	50	Ferrule 2,5mm2 grey insulated	G 492 MONT.ADERHULS	Calpe	E07852
CAB	25	Ferrule 4mm2 orange insulated	G 493 MONT.AD.HULS	Calpe	E07854
CAB	10	Ferrule 2x4mm2 grey insulated	G 493 TWIN MONT.AD.HULS	Calpe	E07897
CAB	4	Ferrule fork M5 0.5-6.0 mm2 blue	A-25053	Calpe	E07982
CAB	4	Cabletag eye M5 1,04..2,63 mm2 blue	A-2553 R MONT.K.SN.	Calpe	E07983
CAB	3	Internal wire white AWG10 6mm2 UL-CSA	AWG 10 WIT	LAPP	
CAB	3	Internal wire black AWG10 6mm2 UL-CSA	AWG 10 ZW	LAPP	E07891
CAB	3	Internal wire blue AWG14 2.5mm2 UL-CSA	AWG 14 BLAUW	LAPP	E08028
CAB	2	Internal wire white AWG18 1.0mm2 UL-CSA	AWG 18 WI	LAPP	E07844
CAB	1	UL neopreen 4*AWG16 (1.5mm2) 600V.	AWG 16*4	LAPP	E10796
CAB	1	Cable gland M16*1.5 polyamide 50.616	WARTEL PA M16*1.5	Jacob	E01196
CAB	1	Cable gland nut M16*1.5 polyamide 50.216PA	WARTELMOER PA M16	Jacob	E07890
CAB	3	Internal wire white AWG14 2.5mm2 UL-CSA	AWG 14 WIT	LAPP	E08112
CAB	1	Internal wire white AWG12 4mm2 UL-CSA	AWG 12 WIT	LAPP	
CAB	2	UL neopreen 4*AWG14 (2.5mm2) 600V.	AWG 14*4		
10S1	1	Body 3p main switch 63A	V3	Schneider Electric	333-3486.01
10S1	1	Rotary handle front KCF - for V3, V4 - red handle	KCF-2PZ	Schneider Electric	333-3486.02
10U3	1	Freq. regelaar monophase 200/240Vac 4kW ex filter Yaskawa	FREQ V1000	Omron	E07985
10F3	1	Circuit breaker AB 2P 32A D-kar UL489	C60N-1489-M2D320	Allen Bradley	E07984
10P5	1	Amperemeter schaal 25A/ in10Vdc 48*48 met cornermask	IQ/EQ48 25A/10V	Crompton	E01635
10F8	1	Circuit breaker AB 2P 10A C-kar UL 489 480/277V	C60N-1489-M2C100	Allen Bradley	E05181
11S1	1	Red Ø40 Emergency switching off pushbutton head Ø22 latching	ZB4-BS844	Schneider Electric	E08437
11S1	1	Body for control button - Ø 22 - 2NC	ZB4-BZ104	Schneider Electric	E01333
11S1	1	Sticker emergency stop yellow/red	EMERGENCY STOP STICKER	De Vries	E07832
11M2	2	UITL.FILT.MONT.UITSP. 80*80MM	221-336 KAST KL.BEH.	PABST	E00283
11M2	2	Finger Guard 80mm.	250-1612 KAST KL.BEH	PABST	E00283
11M2	1	VENTILATOR80*80*38MM 240VAC	FAN 80*80*38	PABST	E05140
11SH2	1	Green flush/red flush illuminated double-headed pushbutton Ø	ZB5-AW7A3741	Schneider Electric	E07804

			Date	16-9-2015	Project name: 1-8DPS30 3KW 230V SF ULCSA E01535-1/ULCSA		Page description: Part list	Customer: Blastrac BV		=
			Ed.	KR				Drawing number: PJ11.01067.10		+
Modification	Date	Name	Last print	16-9-2015						Page

Certificate: 2459264
Project: 2459264



Master Contract: 251963
Date Issued: December 1, 2011

APPLICABLE REQUIREMENTS

- CSA Standard C22.2 No. 0 - General Requirements, Canadian Electrical Code Part II
- CSA Standard C22.2 No. 04 - Bonding of Electrical Equipment
- CSA Standard C22.2 No. 14 - Industrial Control Equipment
- UL508 - Industrial Control Equipment
- UL508A - Industrial Control Panels



CSA INTERNATIONAL

Supplement to Certificate of Compliance

Certificate: 2459264

Master Contract: 251963

*The products listed, including the latest revision described below,
are eligible to be marked in accordance with the referenced Certificate.*

Product Certification History

Project	Date	Description
2459264	December 1, 2011	Original cCSAus Certification of motor control boxes Types 350E SB UL, 500E SB UL, BDC 854, 654 BDC, 1-10DS dual voltage, 1-15DS dual voltage, 1-8 DPS30, 1-10 DPS75 and BMC-EHY335.



13201 North Santa Fe Avenue • Oklahoma City, OK 73114 • Ph: 800-256-3440 • F: 405-478-8608 blastrac.com

Product Warranty

Standard Equipment Products:

Blastrac warrants its Blastrac Standard Equipment Products against defects in quality of material and workmanship, under normal and proper use for a period of **1 Year** from the date of delivery, as noted on the returned warranty registration card, or, in the case of **Rental Fleet Machines, 180 Days** from the date of assignment to Rental Fleet. This warranty is non-transferable and is extended to machines purchased and entered into the normal service of surface preparation by a recognized professional or qualified contractor. Blastrac makes this warranty only to the buyer who purchases the products directly from Blastrac or its Authorized Distributor. This warranty does not include expendable parts such as, but not limited to, blades, blast wheels, wear plates, liners, seals, and electrical components. All purchased parts utilized in the manufacture will be honored to the original manufacturer's specified warranty.

If the buyer does not return the warranty card or register the product online at www.blastrac.com within 30 days after taking delivery of Blastrac Standard Equipment Products, the warranty period is limited to 6 months from the date of delivery noted on shipping receipt.

Hand Tool Products:

Blastrac warrants its BLASTRAC Hand Tool Products, including hand grinders and accessories, against defects in material and workmanship under normal and proper use for a period of **90 days** from the date of delivery or, in the case of Rental Fleet Machines, from the date of assignment to a Rental Fleet. Blastrac makes this warranty only to the buyer who purchases the products directly from Blastrac or its authorized distributor. This warranty does not include expendable parts such as blades.

If the buyer does not return the warranty card, or register online at www.blastrac.com within 15 days after taking delivery of Blastrac Hand Tool Products, the warranty period is limited to 30 days from the date of delivery noted on shipping receipt.

WARRANTY TERMS AND CONDITIONS:

1. Blastrac's obligation under this warranty is limited to the replacement or repair, at Blastrac's option, of products and does not include, labor, the cost of transportation, loss of operating time, or normal maintenance services.
2. This warranty does not apply to failure occurring as a result of abuse, misuse, negligence, corrosion, erosion, normal wear and tear, alterations or modifications made to products without the express written consent of Blastrac.
3. The buyer must submit all warranty claims no later than thirty (30) days after buyer becomes aware of the basis for any such claim, or should have become aware of the basis for any such claim in the exercise of reasonable diligence.

To return parts for warranty consideration, please call Blastrac Customer Service at **800-256-3440**. Your customer service representative will obtain the necessary information to complete the Blastrac Returned Merchandise Authorization (RMA) Form. Blastrac will then send the RMA form to the customer authorizing the return of the parts for warranty evaluation. The parts must be received within sixty (60) days following the RMA origination date or the warranty claim will be denied. Once the parts are received they will be evaluated for warranty.

If the customer cannot wait for the evaluation/replacement of the parts during this process, the customer must issue a new purchase order to Blastrac for the replacement parts before they can be shipped. Once the evaluation process is complete and parts are deemed a valid warranty claim, a credit will be issued against this invoice.

4. The buyer may not return Blastrac products without written authorization to do so through a Blastrac RMA.

5. Blastrac reserves the right to inspect and determine the scope of its warranty responsibilities for any returned Blastrac products.

6. Blastrac makes no warranty with respect to accessories it does not manufacture, including but not limited to, engines, motors, batteries, tires and all other parts. See component manufacture warranty.

7. Blastrac reserves the right to make product changes or improvements without prior notice and without undertaking any obligation for such changes or improvements on previously sold products.

8. The above warranty conditions can only be altered by Blastrac. Blastrac must confirm alterations in writing for each specific transaction.

9. Blastrac reserves the right to modify this warranty for used or demo products on an individual transaction basis. Blastrac will include warranty modifications on its invoices for used or demo products.

10. BLASTRAC DOES NOT AUTHORIZE ANY PERSON, REPRESENTATIVE, SERVICE OR SALES OUTLET TO MAKE ANY WARRANTY DIFFERENT FROM THIS PRODUCT WARRANTY.

11. EXCEPT FOR ITS PRODUCT REPAIR OR REPLACEMENT OBLGATIONS DESCRIBED IN THIS PRODUCT WARRANTY, UNDER NO CIRCUMSTANCES SHALL BLASTRAC BE LIABLE TO THE BUYER, OR ANY OTHER PERSON, FOR ANY DIRECT, INCIDENTAL, OR CONSEQUENTIAL DAMAGES RESULTING FROM THE USE OF THE BLASTRAC PRODUCT, OR FOR ANY SPECIAL OR CONSEQUENTIAL DAMAGES OF ANY CHARACTER, INCLUDING WITHOUT LIMITATIONS, DAMAGES FOR ANY LOSS OF GOODWILL, WORK STOPPAGE, OR ANY AND ALL OTHER COMMERCIAL DAMAGES OR LOSSES.

12. BLASTRAC MAKES NO OTHER PRODUCT WARRANTIES, EXPRESS OR IMPLIED, INCLUDING, BUT NOT LIMITED TO, THE IMPLIED WARRANTIES OF MERCHANTABILITY AND FITNESS FOR A PARTICULAR PURPOSE.



IMPORTANT!

TO THE DELIVERING DISTRIBUTOR OR END USER

To ensure the proper warranty coverage is extended to the owner of this machine, fill in the necessary information below **COMPLETELY** and **ACCURATELY** and retain for your records. **Go to www.blastrac.com and register online.** Click on the Register icon in the left column of the homepage, and fill out the product registration form with the same information that will be recorded here.

The warranty period will start upon the delivery date of the machine.

The distributor or the end user must provide the machine warranty information when the machine is delivered. Registration of the machine will extend the warranty period from the recorded delivery date entered with product registration. **Failure to comply will make any and all warranties on the equipment void after 6 months.**

OWNER/END USER'S REFERENCE INFORMATION

Delivery Date _____	Machine Model No. _____
Delivering Distributor's Name and Address _____	Machine Serial No. _____
_____	Modifications _____
_____	_____
_____	_____
_____	_____
_____	_____

Signature of Delivering Distributor's Representative

Blastrac is a registered trademark of Blastrac,NA
Fold and Detach Here if Mailing

Warranty Registration

IMPORTANT! To ensure that your Blastrac® machine is covered under warranty, please provide the information recorded here by registering online at blastrac.com, or complete this page and fax to 866-485-1046, or if you prefer, detach and mail to:

Blastrac, 13201 North Santa Fe Avenue, Oklahoma City, OK 73114-9901

(Please print legibly)

Company _____

Address _____

City, State, & Zip _____

Telephone No. _____ Contact Person _____

Date of Purchase _____ Date Received _____

Machine Model No. _____ Serial No. _____

Distributor Name _____

End User Name _____

End User E-mail _____



Contact

Blastrac NA
13201 North Santa Fe Avenue
Oklahoma City, OK 73114
Tel: 800-256-3440
Fax: 405-478-8608
www.blastrac.com

