

# Commercial Black Max Downdraft™ Dryer

Model PD10K

## Operator and Parts Manual



## IMPORTANT SAFETY INSTRUCTIONS

### READ ALL INSTRUCTIONS BEFORE USING THIS APPLIANCE

When using an electrical appliance, basic precautions should always be followed.

**WARNING-** To reduce the risk of fire, electric shock or injury:

Use only as described in this manual. Use only manufacturer's recommended components and attachments.

Use only indoors. Do not use outdoors or expose to rain.

Do not use with damaged cord or plug. If appliance is not working as it should, has been dropped, damaged, left outdoors, or dropped into water, return it to your Authorized dealer.

Do not pull or carry by cord, use cord as a handle, close door on cord, or pull cord around sharp edges or corners. Keep cord away from heated surfaces.

Do not unplug by pulling on cord. To unplug, grasp the plug, not the cord.

Do not handle plug or appliance with wet hands.

Do not put any object into openings. Do not use with any opening blocked; keep free of dust, hair and anything that may reduce air flow.

Turn off all controls before unplugging.

Do not attempt to service the unit while appliance is plugged in.

Appliance may cause a fire when operating near flammable vapors or materials. Do not operate this machine near flammable fluids, dust or vapors.

Connect to a properly grounded outlet.

Do not use with any solid state speed control device.

This unit is thermally protected.



Fig. 5

### WARNING

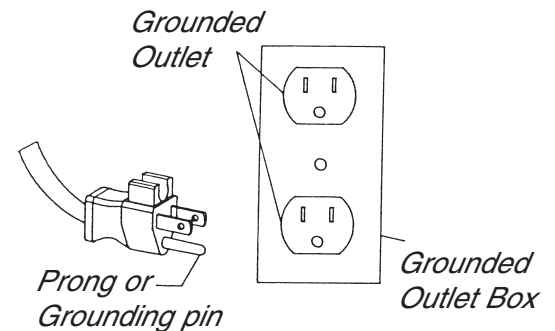
Do not stack dryers more than 4 (four) units high for transport, 5 (five) units high for storage.

## GROUNDING INSTRUCTIONS

This appliance must be grounded. If it should malfunction or break down, grounding provides a path of least resistance for electric current to reduce the risk of electric shock. This appliance is equipped with a cord having an equipment-grounding conductor and grounding plug. The plug must be plugged into an appropriate outlet that is properly installed and grounded in accordance with all local codes and ordinances.

\*This appliance is for use on a nominal 120 volt circuit and has a ground plug (see illustration, right). Make sure that the appliance is connected to an outlet having the same configuration as the plug. No adaptor should be used with this appliance.

**WARNING** - Improper connection of the equipment-grounding conductor can result in a risk of electric shock. Check with a qualified electrician or service person if you are in doubt as to whether the outlet is properly grounded. Do not modify the plug provided with the appliance – if it will not fit the outlet, have a proper outlet installed by a qualified electrician.



\*This applies only to North America. Most other countries use 230V circuit.

## FOR BEST PERFORMANCE

- Keep machine clean and in good operating condition.
- Have machine checked periodically by your Authorized Dealer.
- Use only authorized service centers for parts or service.
- Store machine carefully in dry area.
- For optimum drying performance and safety, study and follow your operators manual.

## SAVE THESE INSTRUCTIONS

# OPERATING INSTRUCTIONS

1. Plug into a standard outlet with the correct voltage and amperage for the unit.
2. Place the dryer in the desired operating position, lock casters.
3. Set the switch at the desired speed: low or high.
4. Check for proper operation before leaving the unit unattended.  
Do not move or carry the dryer when it is running.

## 12 AMP Resettable Circuit Breaker

The Downdraft™ Fan features a 12 amp circuit breaker that will “trip” if more than 12 amps of electrical current is drawn through the cord.

## Operating Positions

The Downdraft™ Fan is designed to operate in multiple positions for any type of drying. (See figures below.)

1. **Face Down** – Set the Downdraft™ Fan on the four caster wheels to direct air straight down. Turn each caster to a 45° angle to the housing for best airflow.
2. **Tilt Back** – Tilt the Downdraft™ Fan backward on the four curved molded legs at an angle to direct air for elevated drying.
3. **Upright** – Set the Downdraft™ Fan square with the handle on the top to direct air across a room.
4. **Tilt Forward** – Tilt the Downdraft™ Fan forward on the “standing legs” at an angle to direct airflow along the flow in front of the dryer.
5. **Stack for Storage** – The Downdraft™ Fans interlock and stack for easy storage and transport. (See figure 5. on page 2)

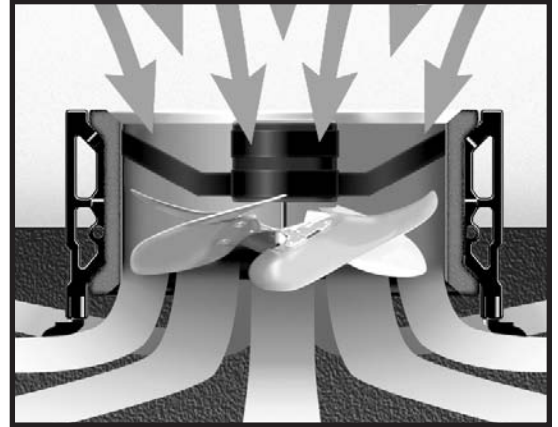


Fig. 1



Fig. 2



Fig. 3



Fig. 4

# MAINTENANCE/TROUBLE SHOOTING

## Periodic Maintenance

1. Check power cord for any breaks, separations or cuts.
2. Make sure the ground pin or grounding prong is intact or the machine will be unsafe to operate.

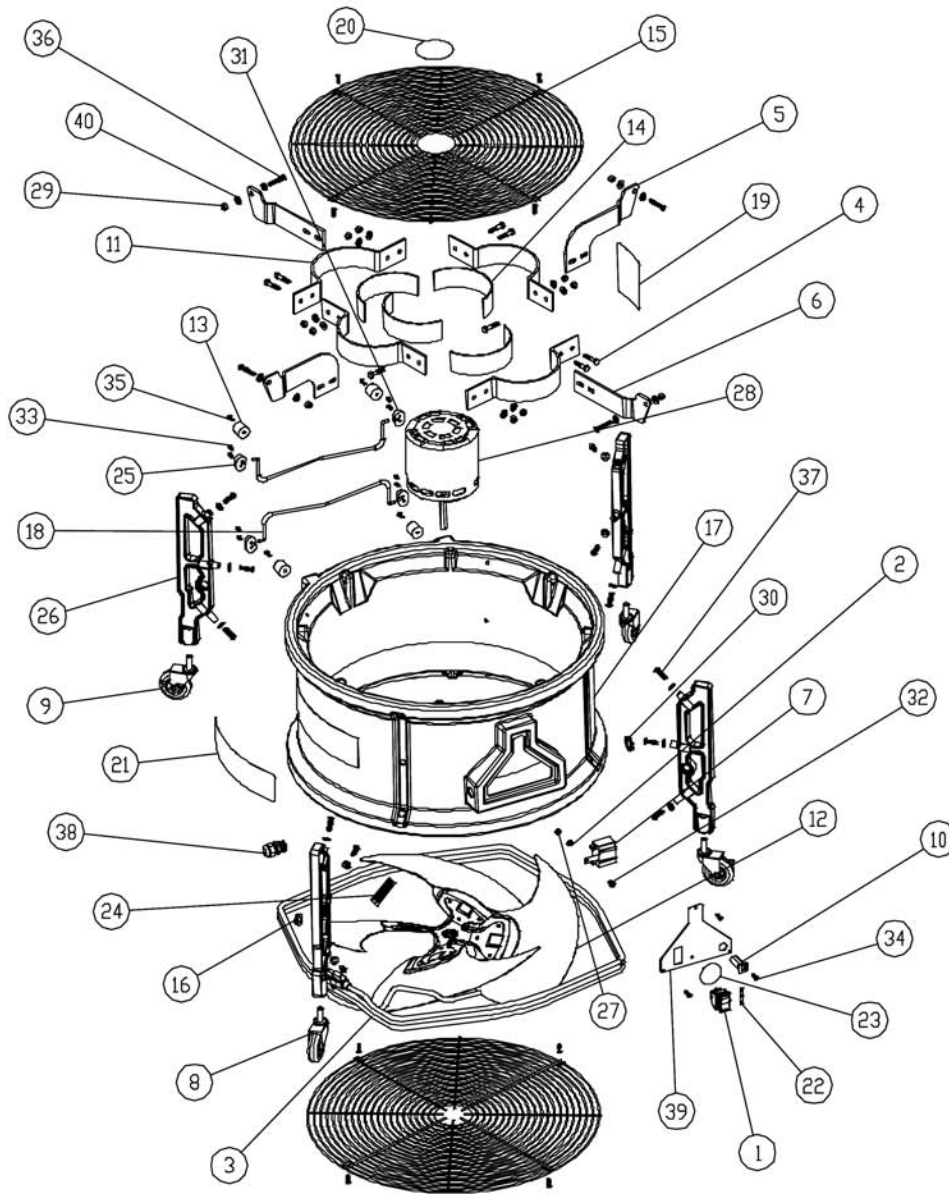
## Trouble Shooting (if the dryer will not run)

1. Verify that electrical cord is firmly seated in wall outlet.
2. Check if dryer circuit breaker is tripped, reset if necessary.
3. Check to see if building circuit breaker is tripped. If circuit is overloaded, move cord to a different outlet.
4. If using an extension cord, make sure it is in good condition, proper gauge and firmly connected.

## The Limited Warranty

The manufacturer warrants to the original purchases that products manufactured are free from defects, provided such goods are installed, operated and maintained in accordance with written manuals or other instructions for a period of 10 years on the housing, 2 years on the motor and 1 year on parts and workmanship, from date of purchase.

# ASSEMBLY



## Parts for PD10K

ITEM	DESCRIPTION	PART NO
1	Power Switch	X9411
2	#10 Flat Washer	X8225
3	20',115v,16/3 cord	X8926
4	1/4-20 X 1 1/4, BlackHex Bolt	X8843
5	Lower Motor Bracket	X9347
6	Upper Motor Bracket	X9346
7	Capacitor	X9391
8	2.5" Stem Swivel Casters	X9339
9	2.5" Stem Locking Swivel Caster	X9373
10	12A Circuit Breaker	X9186
11	Motor Clamp	X9368
12	Swept Fan Blade	X9340
13	Tall Rubber Foot	PD3B
14	Motor Gasket	X9333
15	Fan Grill	X9336
16	Grommet 3/8" ID 7/8" OD	X9353
17	Housing	X9356
18	Dryer Kickstand	X8874
19	Caution Label	X9010
20	Grill Label	X9354

ITEM	DESCRIPTION	PART NO
21	BlackMax Label	X9355
22	Switch Label	X9388
23	Switch Plate Logo Lable	X9357
24	Warning Label	X8976
25	Left Kickstand Foot	X8929
26	Leg	X9345
27	Lock Nut #10 NYLON Black	X9371
28	Motor 3/4 HP	X9348
29	1/4-20 Nylon Lock Nut	X8237BK
30	1/2" Steel Conduit Lock Nut	X8008N
31	Right Kickstand Foot	X8928
32	SCREW #10 X 1/2" BLACK	X9370
33	SCREW #6 X 1/2 PAN HD PHIL	X8261
34	#8X3/4" Black Sheet Metal Screw	X9349
35	#8X5/8" Black Sheet Metal Screw	72387A
36	1/4-20 X 1 1/2", Black Sheet Metal Scw	X9359
37	1/4-20 X1,Black Machine Screw	X9387
38	Strain Relief1/2" NPT	PD8
39	Switch Plate Logo Lable	X9335
40	1/4" USS Black Washer	X8235BK