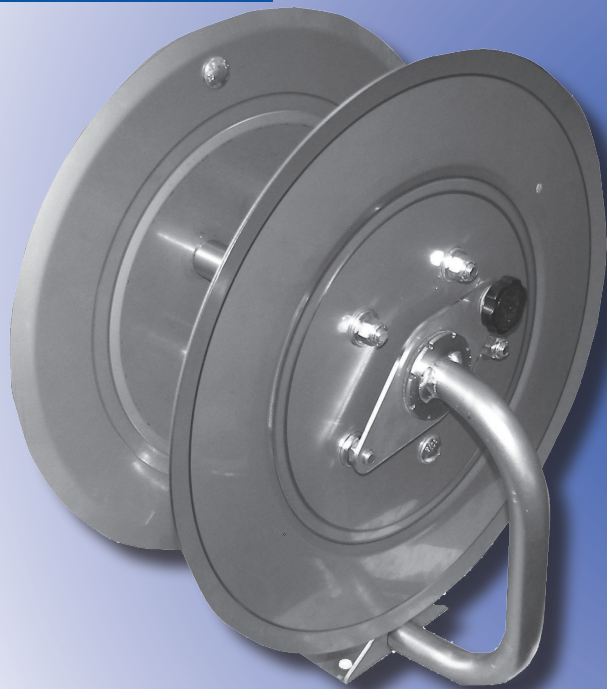




STAINLESS STEEL PRESSURE WASHER HOSE REEL

- Industrial grade reel
- Brake eliminates hose free-spooling
- Zinc plated base and arm for durable mounting
- Reduces garage and workshop clutter
- Mount on wall, workbench, flat trailer or power washer



AR100 - Narrow-base mount, friction brake
capacity: 150' of 3/8", 3500psi, 250°F



AR150 - Narrow-base mount, friction brake
capacity: 150' of 3/8", 5000psi, 400°F



AR110 - Wide-base mount, pop latch brake
capacity: 250' of 3/8", 3500psi, 250°F



AR151 - Wide-base mount, pop latch brake
capacity: 250' of 3/8", 5000psi, 400°F



AR152 - Wide-base mount, pop latch brake
capacity: 150' of 5/8", Inlet