

**SERVICE MANUAL
PARTS LIST**

**COMMERCIAL AND INDUSTRIAL
FLOOR MACHINES**

MODELS:

**TP-1334
TP-1710
TP -1715
TP -2010
TP-2015
TP -2S-2015-DC
RM -1715
RM -2015**

	PAGE
I.- FINAL TEST FOR PRODUCT SAFETY	3
II.- REPLACEMENT PROCEDURES	3
III.- TROUBLE SHOOTING CHART	4
IV.- ELECTRICAL RATING	5
V.- WIRING DIAGRAM	6
VI.- PART LIST	7
VII.- ASSEMBLY POLISHER	10

I. - FINAL TEST FOR PRODUCT SAFETY

AT THE COMPLETION OF ANY REPAIR THE PRODUCT SHOULD BE ELECTRICALLY TESTED FOR OPERATING AND ELECTRIC TEST AS FOLLOWS

ELECTRIC TEST

- A). - Set hi-pot meter at 1500 V
- B). -Product Switch to on position.
- C). -Touch one probes of tester to on blade of power cord plug and touch other probe to handle tube. There should be no breakdown.

OPERATING TEST

RUN THE MACHINE ON HARD SURFACE WITH BRUSH OR PAD AND MAKE SURE:

- A) . - There should be no unusual noise or vibration.
- B) . -The motor should fast and without noise
- C). - The current draw should be less than 15 a on the 1.5 HP machines less than 15 A on the one HP and less seven A on the $\frac{3}{4}$ HP

II. - REPLACEMENT PROCEDURES ASSEMBLY

1. MOTOR ASSEMBLY REPLACEMENT (56)

- 1.1.-Place the polisher in vertical position ,disconnect line cord (53) ,from the motor line cord (32)
- 1.2.- Remove the three screws (65) ,the fast nuts (64) and lift the ventilation cover
- 1.3.- Remove the connection boxes from the motor and disconnects the three leads of the motor line cord assembly (53) also removing the ventilation cover (48)
- 1.4.- Remove the two screws (62) the capacitor cover (61) as well as the insulator (60) (If the model has two capacitors repeat the operation)
- 1.5. Disconnect the capacitor or capacitors (59) (58) and remove the motor cover assembly
- 1.6.-Remove the four screws (67) that secure the motor to the chassis (84)
- 1.7.- Put new motor reduction assembly and reassemble

NOTE: WHEN REPLACING THE MOTOR MAKE SURE THE REPLACEMENT HAS THE SAME CHARACTERISTICS, DO NOT ATTEMPT TO REPAIR IT YOURSELF .SEND IT TO THE SERVICE DEPARTMENT TO BE REPAIRED .IT'S ALSO IMPORTANT WHEN DEALING WITH THE TWO CAPACITOR MODELS, TO PLACE AND CONNECT THE CAPACITORS AS INITIALLY PLACED TO AVOID DAMAGING THE MOTOR .

2.- ON-OFF HANDLE REPLACEMENT (1)

- 2.1.-Remove the two screw (8) and two washer (9)
- 2.2.- Remove the screw (4-A) and sure button (4-B)
- 2.3.-Remove the switch box cover black (7)
- 2.4.- Remove the two bolts with head (11) and two springs (2)
- 2.5.- Replace the ON-OFF handle, and reassemble

3 .- MICRO SWITCH REPLACEMENT (27)

- 3.1.- Follow steps 2.1 ,2.2 and 2.3
- 3.2.-Disconnect her connection micro switch
- 3.3.-Remove the two screw (29) and two washer (28)
- 3.4.- Remove and replace the micro switch insulator (26) as originally assembled

4.-ASSEMBLY SURE REPLACEMENT (4)

- 4.1.- Follow steps 2.1,2.2 and 2.3
- 4.2.-Remove the dust cover (4-G) and two screw (4-F)
- 4.3.-Remove the assembly sure and replace the component damaged and reassemble

5 LINE CORD ASSEMBLY REPLACEMENT (32)

- 5.1.- Follow the steps indicated on points 2.1,2.2 and 2.3
- 5.2.- Disconnect the ground (green) as well as the lead connected to the micro switch (27)
- 5.3.-With HEYCO pliers remove the grommet (33) as well as the washer (34)
- 5.4.- Remove GROMMET line tube (35) as well as the motor leads assembly (32)
- 5.5.- Replace the motor lead by inserting the handle assembly (10) upwards and previously placing the GROMMET tube (33) at the same distance as the prior lead
- 5.6.-place the washer (34) as well as the grommet (33) connect and reassemble as initially placed

6 LINE CORD REPLACEMENT (40)

- 6.1.- Follow steps 2.1,2.2 and 2.3
- 6.2.- Disconnect ground (Green) as well as connection micro switch (27)
- 6.3.- With HEYCO tool, remove HEYCO GROMMET (33) and replace line cord

NOTE : MAKE SURE LINE CORD IS PROPERLY CONNECTED TO CONNECTION BOX

7 YOKE REPLACEMENT (73)

- 7.1.- Loosen handle lever ,remove screws (42) and bolts (41)
- 7.2.- Pull tube assembly (10) upwards
- 7.3.- Remove the truarc (75) remove the Allen oppressor locks (76) and remove one side of the yoke axle (74)
- 7.4.- Replace yoke and reassemble

III.- TROUBLE SHOOTING CHART

1.- MOTOR DOESN'T START

POSSIBLE CAUSE	SOLUTION
CONNECTED	CHECK CONNECTED
LINE CORD DAMAGED	REPLACE
LINE CORD IMPROPERLY CONNECTED	REVISE CONNECTION
LINE CORD DAMAGED	REVISE LINE CORD
MICRO SWITCH DAMAGED	REPLACE MICRO SWITCH
CAPACITOR DAMAGED	REPLACE CAPACITOR
MOTOR LINE CORD DAMAGED	REPLACE MOTOR LINE CORD
MOTOR ASSEMBLY DAMAGED	REPLACE MOTOR ASSEMBLY
PISTON AND SPRING DAMAGED	REPLACE

2.-MOTOR WORKS BALDY

POSSIBLE CAUSE	SOLUTION
LOW	CHECK VOLTAGE (LINE)
CAPACITOR DAMAGED	REPLACE CAPACITOR
IMPROPER MOTOR CONNECTIONS	REVISE CONNECTIONS
REDUCTION UNIT DAMAGED	REPLACE

WHEN ORDERING ,DO NOT FORGET TO SPECIFY :

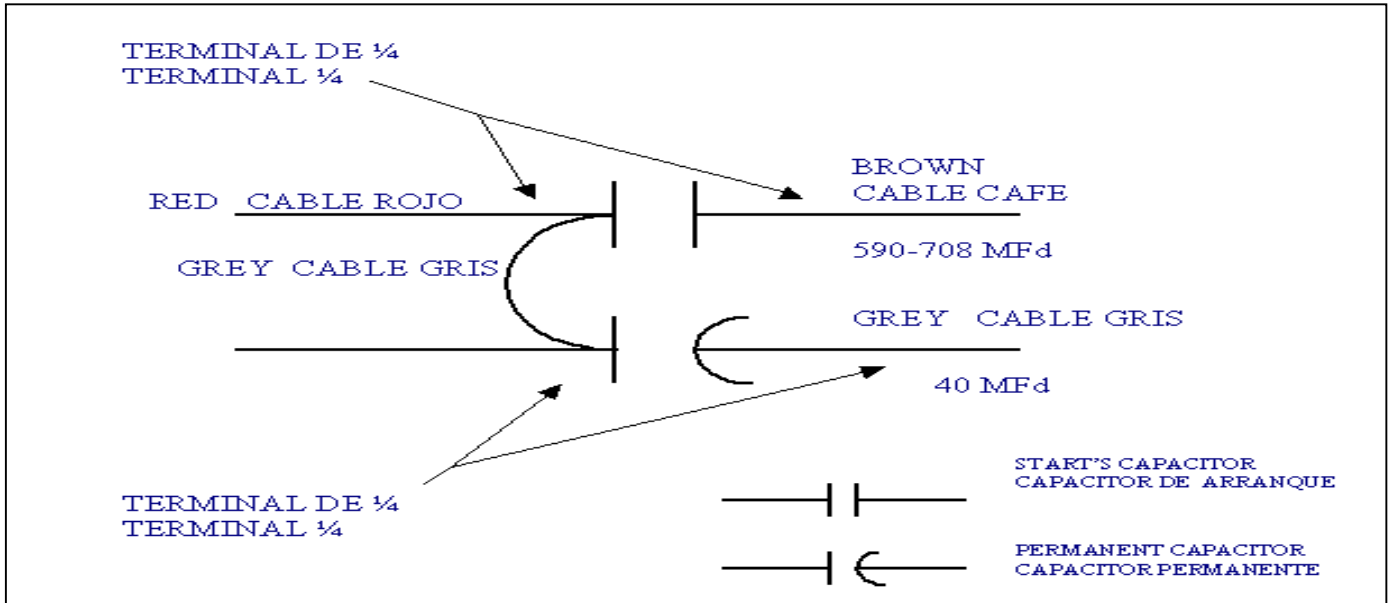
- ✓ **PART NUMBER**
- ✓ **DESCRIPTION**
- ✓ **MODEL NUMBER**

NOTE: Drawing numbers are for identification purposes only.

IV.- ELECTRICAL RATING

MODEL	V~	A	Hz
TP-1334	120	7	60
TP-1710	120-127	13-15	60
TP-1715	120	15	60
TP-2010	120-127	13-15	60
TP-2015	120	15	60
TP-2S-2015-DC	120	15	60
RM-1715	120	15	60
RM-2015	120	15	60

V.- WIRING DIAGRAM



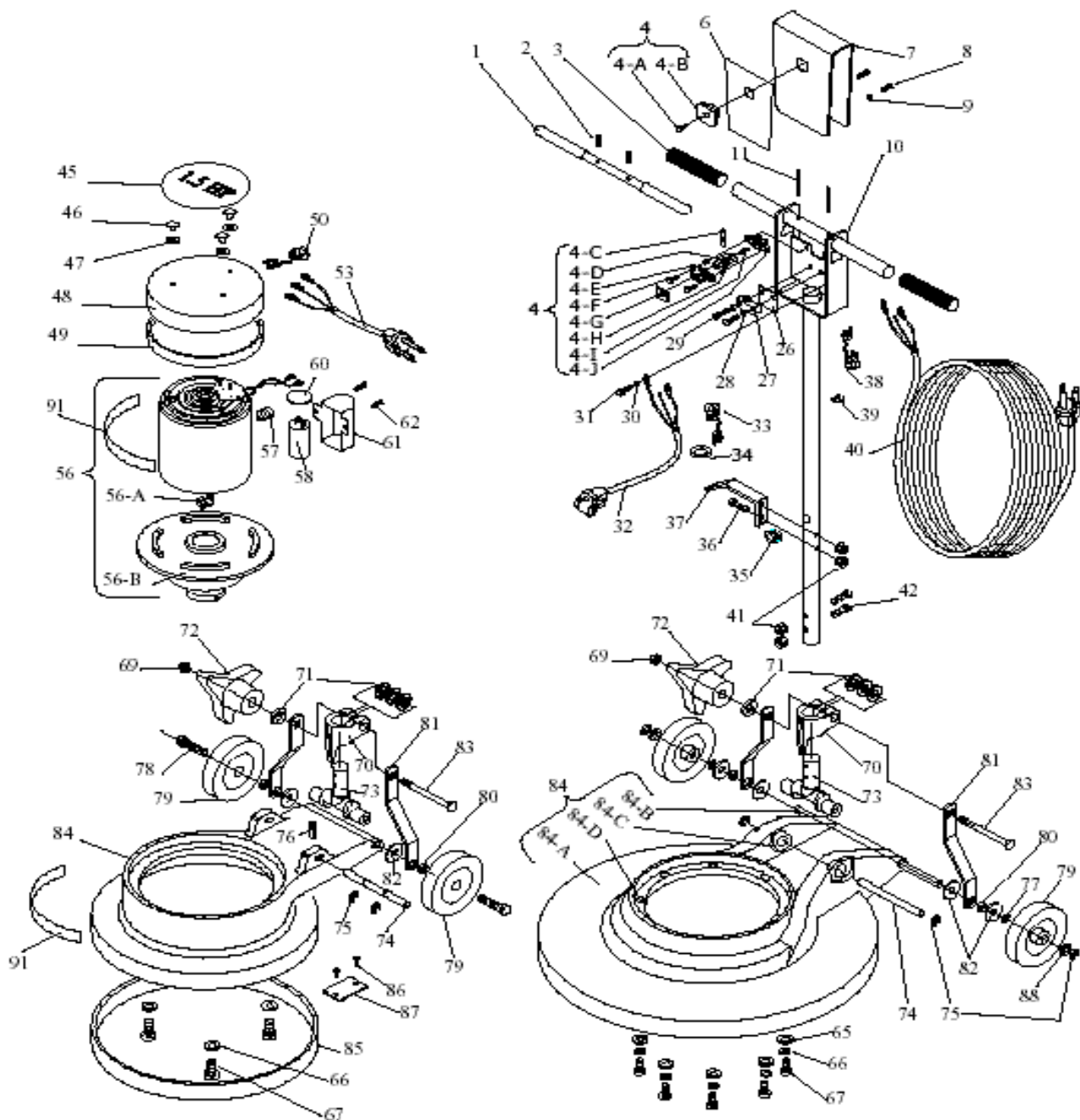
VI.- PART LIST

No	PART	DESCRIPTION	TP 1334	TP 1710	TP 1715	TP 2010	TP 2015	TP 2S 2015 DC	RM 1715	RM 2015
1	05-3979-1	Starter Lever	1	1	1	1	1	1	1	1
2	24-0292-3	Spring	2	2	2	2	2	2	2	2
3	12-0830-5	handle Tube Upper	2	2	2	2	2	2	2	2
4	45-0534-3	Kit spare Assembles Sure	1	1	1	1	1	1	1	1
4-A	01-0272-3	Screw # 6x ½	1	1	1	1	1	1	1	1
4-B	13-2209-8	Sure Button	1	1	1	1	1	1	1	1
4-C	13-2205-6	Piston of the Insurance	1	1	1	1	1	1	1	1
4-D	13-2206-4	Sure	1	1	1	1	1	1	1	1
4-E	13-2208-0	It cover Box it Guides of the insurance	1	1	1	1	1	1	1	1
4-F	01-1732-5	Screw # 8-32x1/2	2	2	2	2	2	2	2	2
4-G	37-0225-5	Dust Cover	1	1	1	1	1	1	1	1
4-H	05-3536-9	Tubular Separator	2	2	2	2	2	2	2	2
4-I	24-0292-3	Spring	1	1	1	1	1	1	1	1
4-J	13-2207-2	Box Guides Of the Insurance	1	1	1	1	1	1	1	1
6	17-3782-4	Switch Box Label Polisher	1	1	1	1	1	1	1	1
7	05-3975-9	Switch Box Cover Black	1	1	1	1	1	1	1	1
8	01-1984-2	Screw #8-32x1"	2	2	2	2	2	2	2	2
9	04-0276-8	Star Washer # 8	2	2	2	2	2	2	2	2
10	23-0655-3	Assemble handle		1	1	1	1	1		
10	23-0704-9	Assemble handle	1						1	1
11	03-0593-8	Bolt with Head	2	2	2	2	2	2	2	2
26	08-1857-5	Insulator Switch	1	1	1	1	1	1	1	1
27	11-0096-5	Micro Switch	1	1	1	1	1	1	1	1
28	04-0275-0	Star Washer # 6	2	2	2	2	2	2	2	2
29	01-0851-4	Screw Hexagonal # 6-32 x 1"	2	2	2	2	2	2	2	2
30	04-0493-9	Star Washer # 8	1	1	1	1	1	1	1	1
31	01-0852-2	Screw Hexagonal #6-32x3/8"	1	1	1	1	1	1	1	1
32	28-0672-7	Motor Cable /Contact assembly	1	1	1	1	1	1	1	1
33	12-0414-8	Grommet Heyco 0.062	1	1	1	1	1	1	1	1
34	04-0036-6	Washer	1	1	1	1	1	1	1	1
35	12-0115-1	Grommet of Rubber	1	1	1	1	1	1	1	1
36	01-1724-2	Allen Screw 5/16-24x3/4"		1	1	1	1	1		
36	01-0870-4	Screw Hexagonal ¼-20x3/4"	2						2	2
37	06-0486-8	Hook Cord		1	1	1	1	1		
37	05-4275-3	Hook Cord	1					1	1	1
38	45-0456-9	Grommet Assembly		1	1	1	1	1		
38	12-0313-2	Grommet Heyco 0.187	1						1	1
39	10-0140-3	Connector of Pressure 2 x 14	1	1	1	1	1	1	1	1
40	28-1078-6	Line Cord Assembly	1	1	1	1	1	2	1	1
41	02-0092-3	Elastic Nut ¼-20	2	2	2	2	2	2	2	2
42	01-1769-7	Screw Hexagonal Head	2	2	2	2	2	1	2	2

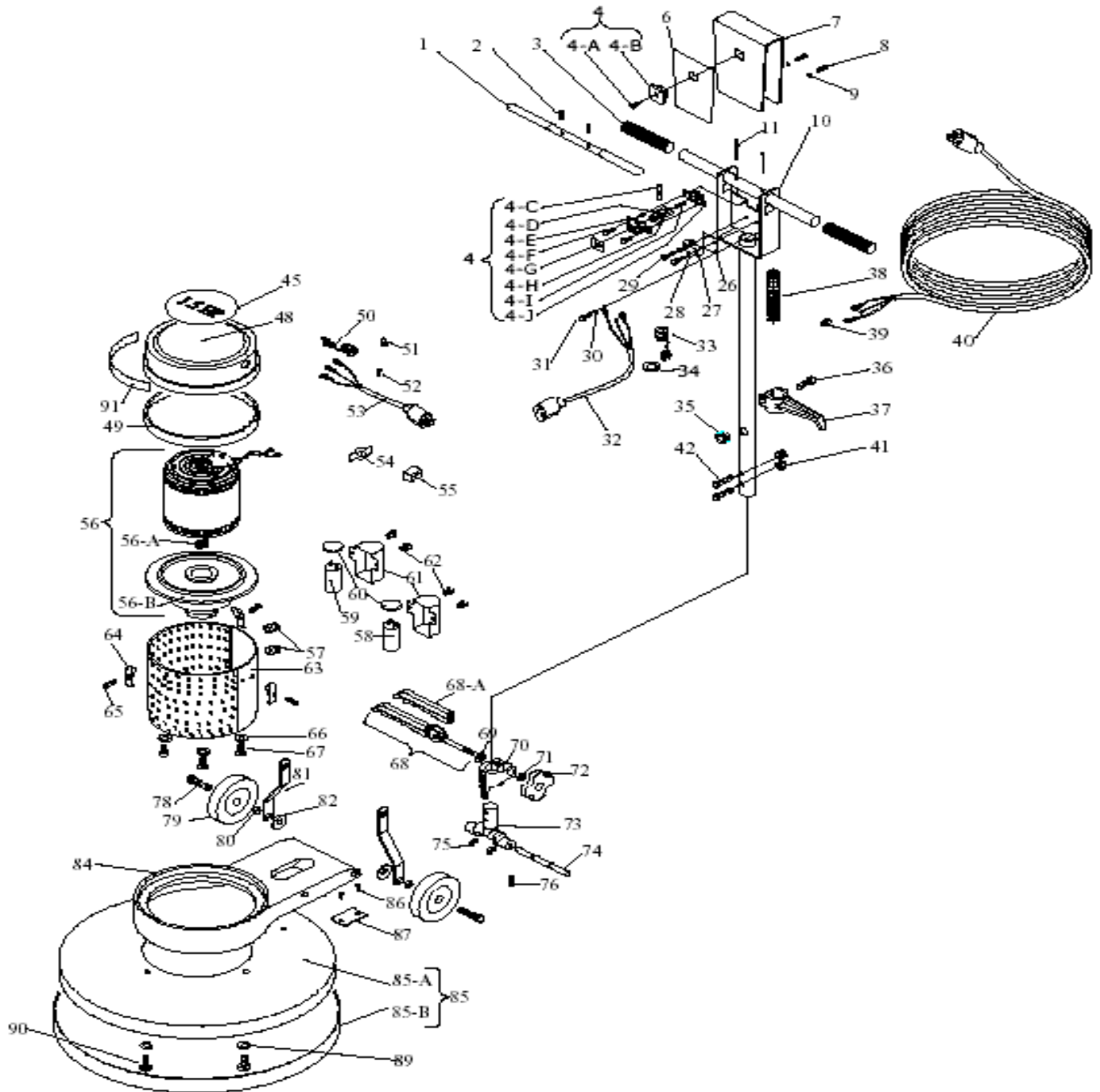
No	PART	DESCRIPTION	TP 1334	TP 1710	TP 1715	TP 2010	TP 2015	TP 2S 2015 DC	RM 1715	RM 2015
45	17-3035-7	1.0 HP Label		1		1				
45	17-3845-9	¾ HP Label	1							
45	17-3036-5	1.5 HP Label			1		1	1	1	1
45	17-3882-2	2 Speed Label		1				1		
46	01-1731-7	Screw (10-32x ¼ ")	3						3	3
47	04-0100-0	Washer	3						3	3
48	05-3998-1	Motor Cover Black	1							
48	05-3765-4	Motor Cover		1	1	1	1			
48	05-4373-6	Motor Cover Gray							1	1
48	05-3981-7	2 Speed Motor Cover		1						
49	12-0829-7	Motor Top Cover Gasket	1						1	1
49	12-0692-9	Motor Top Cover Gasket		1	1	1	1	1		
50	12-0414-8	Grommet Heyco 0.062	1	1	1	1	1	1	1	1
51	10-0140-3	Pressure Connector		1				1		
52	01-1626-9	Screw		1				1		
53	28-0671-9	Motor Cable / Contact Assembly	1	1	1	1	1		1	1
53	28-1079-4	Motor Cable /Contact Assembly 2 Speed		1				1		
54	17-3788-1	Label Speed Low / High		1				1		
55	11-0181-5	Switch On-Off		2				1		
56	46-2793-1	Motor/Trans Gear Box ¾	1							
56	46-2372-4	Motor/Trans Gear Box 1.0 HP		1		1				
56	46-2373-2	Motor/Trans Gear Box 1.5 HP		1		1				
56	44-0346-5	Motor/Trans Gear Box 1.5 HP 2 Speed						1		
56	46-3114-9	Motor/Trans Gear Box 1.5 HP							1	1
56-A	45-0394-2	Reduction Coupling	1	1	1	1	1	1	1	1
56-B	46-2887-1	¾ reduction Assembly	1	1	1	1	1			
56-B	46-2214-8	Reduction Assembly								
56-B	46-3117-2	1.5 Reduction Assembly							1	1
57	12-0024-5	Grommet	1	1	2	1	2		1	1
58	15-0012-3	Capacitor 540-648-MF		1		1			1	1
58	15-0011-5	Capacitor 400-480 MF	1							
58	15-0013-1	Capacitor 590-708 MF			1		1			
59	15-0678-1	Capacitor 40 MF			1		1			
60	08-0979-8	Capacitor Insulator	1	1	2	1	2		1	1
61	05-0211-2	Capacitor Cover Black	1							
61	05-3567-4	Capacitor Cover Chromed		1	2	1	2			
61	05-3568-2	Capacitor Cover Gray							1	1
62	01-1093-2	Tapping Screw 8x3/8 "	2	2	4	2	4		2	2

No	PART	DESCRIPTION	TP 1334	TP 1710	TP 1715	TP 2010	TP 2015	TP 2S 2015 DC	RM 1715	RM 2015
63	23-0587-8	Motor Cover 1.5 HP			1		1			
63	23-0588-6	Motor Cover 1.5 HP		1		1				
63	23-0677-7	Motor Cover 2 Speed						1		
64	02-0071-7	Fast Nut		3	3	3	3	3		
65	01-0068-5	Screw 8x3/8"		3	3	3	3	3	8	8
66	04-0144-8	Pressure Washer 5/16	4	4	4	4	4	4	8	8
67	01-1777-0	Screw (5/16-18 x 1 1/2 ")							8	8
67	01-1771-3	Screw (5/16-18 x 1 ")	4	4	4	4	4	4		
68	46-2231-2	Lever Sub Assembly		1	1	1	1	1		
68-A	12-0617-6	Lever Grip		1	1	1	1	1		
69	02-0119-4	Nut Acorn	1						1	1
69	05-3582-3	Washer		1	1	1	1	1		
70	06-0404-1	Tub Clamp	1	1	1	1	1	1	1	1
71	04-0073-9	Flat Washer 3/8"	1	1	1	1	1	1	1	1
72	06-0865-3	Knob butterflies	1						1	1
72	45-0451-0	Pressure Adjusting Nov Assembly		1	1	1	1	1		
73	06-0771-3	Tube Socket	1	1	1	1	1	1	1	1
74	25-0155-9	Socket Axle	1	1	1	1	1	1	1	1
75	04-0352-7	Lock Truarc 5103-50	2	2	2	2	2	2		
75	04-0585-2	Clamp Truarc							4	4
76	01-1012-2	Oppressor Allen (3/8-16x3/8)	1	1	1	1	1	1		
77	04-0397-2	Washer							2	2
78	01-1704-4	Screw Hexagonal Heat 1/2-13x3	2	2	2	2	2	2		
79	45-0396-7	Wheel Assembly	2	2	2	2	2	2		
79	45-0573-1	Wheel Polisher							2	2
80	25-1210-1	Separator of the brace	2	2	2	2	2	2		
80	25-1291-1	Separator of the brace							2	2
81	05-1975-1	Tube	2	2	2	2	2	2		
81	05-4304-1	Tube							2	2
82	04-0074-7	Flat Washer	2	2	2	2	2	2	4	4
83	01-1746-5	Screw (3/8-16x5)	1						1	1
84	06-0843-0	Polisher Base 13"	1							
84	06-0732-5	Polisher Base		1	1	1	1	1		
84	46-2995-2	Polisher Base 17 "							1	
84	46-2996-0	Polisher Base 20"								1
84-A	13-2626-3	Chassis 17"							1	
84-A	13-2627-1	Chassis 20"								1
84-B	25-1314-1	Axis Grooved for Wheel							1	1
84-C	26-0229-0	Bushing Axis Yoke							2	2
84-D	05-2330-0	Separating Motor Fixation							8	8
85	12-0667-1	Molding chassis 13 "	1							
85	46-2540-6	Assembly. Plate 17 "		1						
85	46-2541-4	Assembly. Plate 20 "				1	1			
85-A	23-0663-7	Assembly Black plate 17 "		1	1					
85-A	23-0664-5	Assembly Black plate 20 "				1	1	1		
85-B	12-0807-3	17" Plate Gasket		1	1					
85-B	12-0808-1	20" Plate Gasket				1	1	1		
86	03-0119-2	U Type Rivet	2	2	2	2	2	2		
87	17-3550-5	WARNING Plate	1	1	1	1	1	1		
88	04-0545-6	Washer Stainless Steel							2	2
89	04-0078-8	Flat Washer		5	5	5	5	5		
90	01-1775-4	Screw Hexagonal Heat 1/4-20x3/4		5	5	5	5	5		
91	17-3025-8	KOBLENZ Label	1	1	1	1	1	1	1	1

VII.- ASSEMBLY POLISHER



INDUSTRIAL POLISHER SERIES “DP Y RM “



INDUSTRIAL POLISHER SERIES " TP "



FACTORY AUTHORIZED SERVICE

Thorne Electric Company
610 Lanark Suite 205
San Antonio TX ,78218
Tel (210) 590-1226
Fax (210) 590-1258
1-800-548-5741

FACTORY

Koblenz Electrica ,S.A. de C.V.
Av. . Ciencia No 28 Cuautitlán Izcalli
Edo. de México ,C.P. 54730
Tel : 5864-0300
Web site : <http://www.koblenz.electric.com>

KOBLENZ ELECTRICA S.A. DE C.V.
E-mail: servicio@koblenz-electric.com

LP-APVI500-200509

SERVICE