

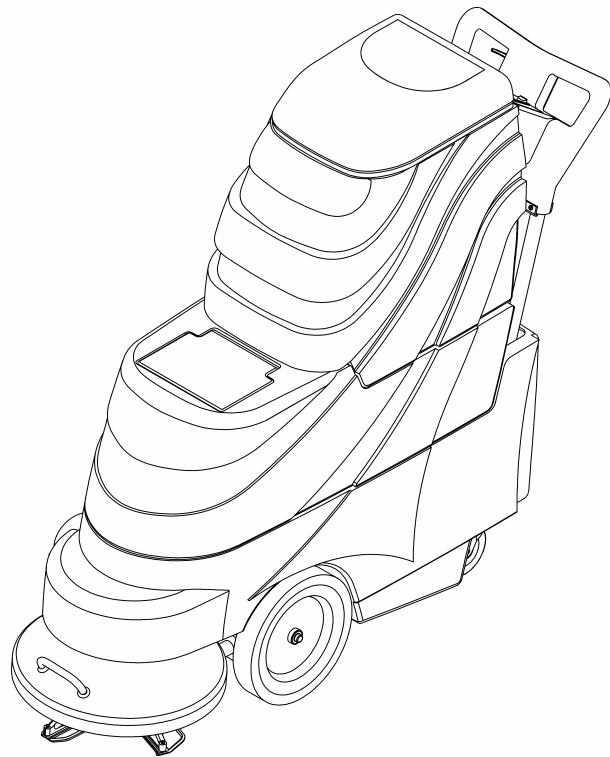
# **CLEANMASTER®**

## **Express Multi Surface**

**Carpet and Upholstery Cleaner**

**Model No.:**  
**100-041-016**  
**12 gal Multi Surface Cleaner**

**Operator and Parts Manual**



**CLEANMASTER**  
11015 47<sup>TH</sup> AVENUE WEST  
MUKILTEO WA 98275 U.S.A.

**FAX: 1-800-426-4225**  
**Website: <http://www.cleanmaster.com>**  
**CUSTOMER SERVICE: 1-800-426-8972**

**MNL50000**  
**Rev. 01 (06-02)**

# OPERATION

---

This manual is furnished with each new model. It provides necessary operation and maintenance instructions and an illustrated parts list.

**Read this manual completely and understand the machine before operating or servicing it.**

Use the illustrated Parts Lists to order parts. Before ordering parts or supplies, be sure to have your machine model number and serial number handy. Parts and supplies may be ordered by phone or mail from any authorized parts and service center or distributor.

This machine will provide excellent service. However, the best results will be obtained at minimum costs if:

The machine is operated with reasonable care.

The machine is maintained regularly – per the maintenance instructions provided.

The machine is maintained with manufacturer supplied or equivalent parts.

---

## MACHINE DATA

---

Please fill out at time of installation for future reference.

Model No.- \_\_\_\_\_

Install. Date- \_\_\_\_\_

Serial No.- \_\_\_\_\_

© CleanMaster

Printed in U.S.A.

CleanMaster is a registered United States trademark

---

## BEFORE STARTING

---

**INSTALL VENT PLUG IN GEAR CASE VENT HOLE. FAILURE TO DO SO WILL DAMAGE GEAR CASE SEAL.**

---

## TABLE OF CONTENTS

---

<b>SAFETY PRECAUTIONS .....</b>	<b>3</b>
<b>MACHINE COMPONENTS .....</b>	<b>4</b>
<b>MACHINE SETUP .....</b>	<b>4</b>
<b>MACHINE OPERATION .....</b>	<b>5</b>
<b>DRAINING TANKS.....</b>	<b>7</b>
<b>FREEZE PROTECTION .....</b>	<b>7</b>
<b>MACHINE MAINTENANCE .....</b>	<b>8</b>
<b>STORING MACHINE.....</b>	<b>10</b>
<b>RECOMMENDED STOCK ITEMS .....</b>	<b>10</b>
<b>TROUBLE SHOOTING.....</b>	<b>11</b>
<b>SPECIFICATIONS .....</b>	<b>12</b>
<b>ELECTRICAL DIAGRAM .....</b>	<b>13</b>
<b>PARTS LIST .....</b>	<b>14</b>
<b>OPTIONS .....</b>	<b>20</b>
<b>WARRANTY POLICY.....</b>	<b>22</b>

# OPERATION

## SAFETY PRECAUTIONS

This machine is intended for commercial use. It is designed to wet clean carpet and upholstery in an indoor environment and is not constructed for any other use. Use only recommended cleaning solutions and accessory tools.

All operators must read, understand and practice the following safety precautions.

The following safety-alert symbols are used throughout this manual as indicated in their description:



**WARNING:** To warn of hazards or unsafe practices which could result in severe personal injury or death.

**FOR SAFETY:** To identify actions which must be followed for safe operation of equipment.

The following information signals potentially dangerous conditions to the operator or equipment.

### FOR SAFETY:

- Do not operate machine:**
  - Unless trained and authorized.
  - Unless operator manual is read and understood.
  - In flammable or explosive areas.
  - With damaged cord or plug.
  - If not in proper operating condition.
  - Unless cord is properly grounded.
  - In outdoor areas.
  - In standing water.
  - With the use of an extension cord.
- Before operating machine:**
  - Make sure all safety devices are in place and operate properly.
- When using machine:**
  - Do not run machine over cord.
  - Do not pull machine by plug or cord.
  - Do not pull cord around sharp edges or corners.
  - Do not unplug by pulling on cord.
  - Do not stretch cord.
  - Do not handle plugs with wet hands.
  - Keep cord away from heated surfaces.
  - Report machine damage or faulty operation immediately.
  - Follow mixing and handling instructions on chemical containers.
  - Connect hoses before turning on pump.
  - Be sure chemicals are safe and non-toxic.
- Before leaving or servicing machine:**
  - Turn off machine.
  - Unplug cord from wall outlet.
- When servicing machine:**
  - Unplug cord from wall outlet.
  - Avoid moving parts. Do not wear loose jackets, shirts, or sleeves.
  - Use manufacturer supplied or approved replacement parts.



**WARNING:** Hazardous Voltage. Shock or electrocution can result. Always unplug machine before servicing.



**WARNING:** Flammable materials can cause an explosion or fire. Do not use flammable materials in tank(s).



**WARNING:** Flammable materials or reactive metals can cause an explosion or fire. Do not use machine for extraction of these materials.



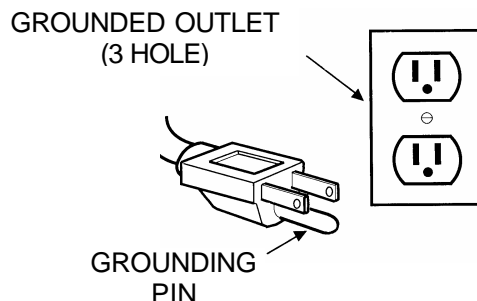
**WARNING:** Hot solutions up to 88° C (190°F). Do not touch with any part of the body. Use thermometer to gauge temperature.



**WARNING:** Contents of solution hoses may be under pressure even after pump is off.

## GROUNDING INSTRUCTIONS

Machine must be grounded. If it should malfunction or breakdown, grounding provides a path of least resistance for electrical current to reduce the risk of electrical shock. This machine is equipped with a cord having an equipment-grounding connector and grounding plug. The plug must be plugged into an appropriate outlet that is properly installed in accordance with all local codes and ordinances. Do not remove ground pin; if missing, replace plug before use. International models will have different cord ends.

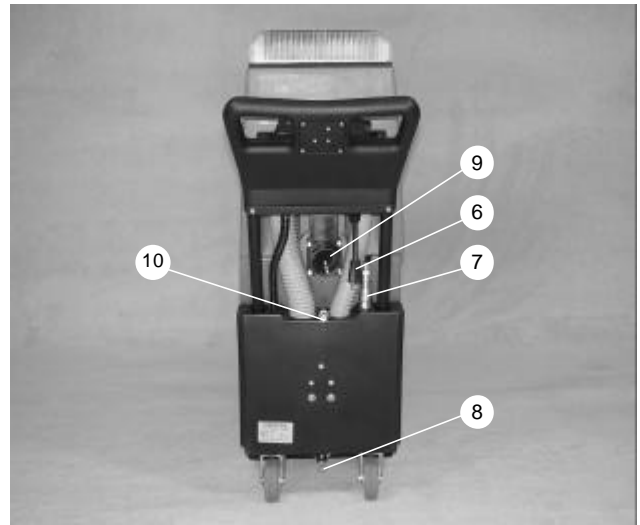


# OPERATION

## MACHINE COMPONENTS



1. Recovery Tank
2. Solution Tank
3. Recovery Tank Lid
4. Solution Tank Lid
5. Star Assembly



6. Power Cord Connector
7. Solution Tank Coupler to Base
8. Squeegee connection loop
9. Recovery Tank Drain
10. Solution Hose Connector

## MACHINE SETUP

1. Carefully check carton for signs of damage. Report damages at once to carrier. The machine is shipped fully assembled and is ready for use.
2. Attach head appropriate for surface to be cleaned (Figure 1). Spindle has a left hand thread. Turn counterclockwise when installing.



Fig. 1

3. Using a clean bucket or hose, fill solution tank with 45 liters (12 gallons) of hot water, 60° C (140° F) maximum.

**Note: Before installing carpet cleaning head, refer to page 9 for lubrication instructions.**

**WARNING: Flammable materials can cause an explosion or fire. Do not use flammable materials in tank(s).**

4. Add a recommended cleaning chemical.

**FOR SAFETY: When using machine, follow mixing and handling instructions on chemical containers.**

5. To clean, lower head by depressing lever behind large right wheel (Figure 2). When transporting machine, raise head again by lifting handle in front of head.

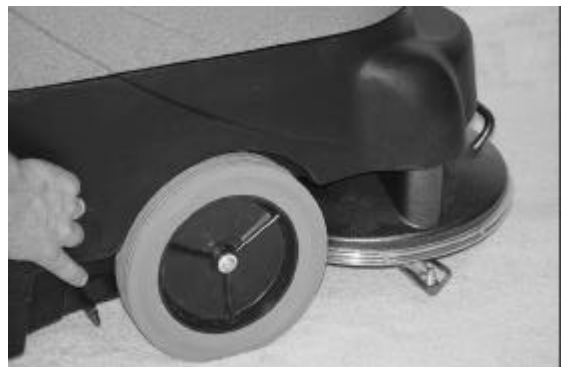


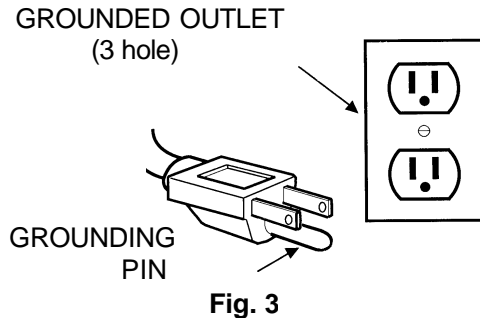
Fig. 2

## OPERATION

**ATTENTION:** If using powdered cleaning chemicals, mix prior to adding to solution tank.

**NOTE:** Prespraying carpet prior to cleaning will enhance the overall cleaning results.

6. Plug machine's power cord into grounded wall outlet. (Figure 3).



**FOR SAFETY:** Do not operate machine unless cord is properly grounded.

**FOR SAFETY:** Do not operate machine with the use of an extension cord.

7. Secure recovery tank lid in place.

### MACHINE OPERATION - WAND

**FOR SAFETY:** Do not operate machine unless operator manual is read and understood.

#### PRE-OPERATION

1. Vacuum carpet and remove other debris with standard vacuum.
2. Inspect power cord for damage.
3. Attach optional solution hose to quick disconnect at the back of the machine. Disconnect vacuum hose from right side of recovery tank and attach optional vacuum hose in its place (Figure 4).



Fig. 4

#### CLEANING CARPETS WITH WAND

1. Activate vacuum switch by placing it either in the "Single Vac" or "Dual Vac" position and activate the pump by turning on the "Continuous Spray" switch (Figure 5)

**Warning:** Do not activate power head switch when using a wand or accessory tool.

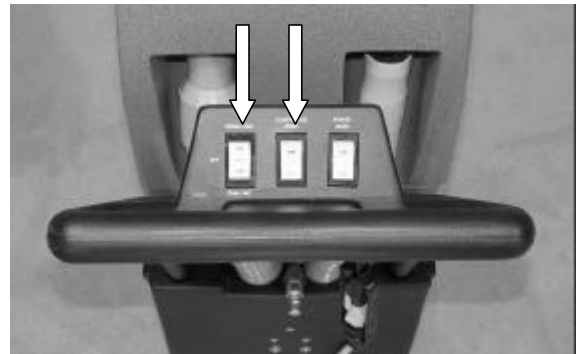


Fig. 5

2. Take carpet cleaning wand in hand and squeeze valve trigger while moving the tool in short forward and backward strokes (Figure 6).

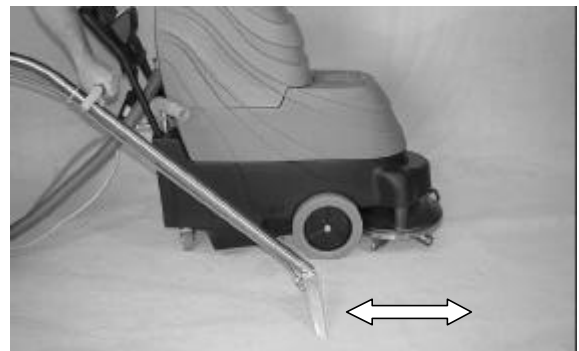


Fig. 6

#### WHILE OPERATING WITH A WAND

1. Overlap each path by 50 mm (2 in).

**Warning:** Flammable materials or reactive metals can cause an explosion or fire. Do not pick up.

2. Periodically check for excessive foam buildup in recovery tank. Use a recommended foam control solution to prevent vacuum motor damage.

**ATTENTION:** Excessive foam buildup will not activate the float shut-off screen.

3. Empty recovery tank every time water is added to solution tank.

# OPERATION

## MACHINE OPERATION - ROTARY

### CONTROLS

There are three switches installed in the dash panel located on the main handle assembly. Place vacuum switch in either "Single Vac" or "Dual Vac" position. Next, turn on "Power Head". For solution output,

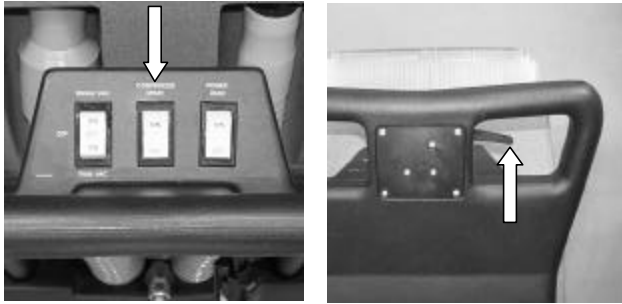


Fig. 7

activate either the "Continuous Spray" switch or squeeze solution trigger (Figure 7). The "power head" switch causes the rotary head to turn.

### MANEUVERABILITY

The ease of handling the Express is a direct result of the rotary extractor head. Its natural cleaning motion provides the "drive" for the unit. The slightest push or pull against the handle causes the rotating head to produce a pulling force in the forward direction or a

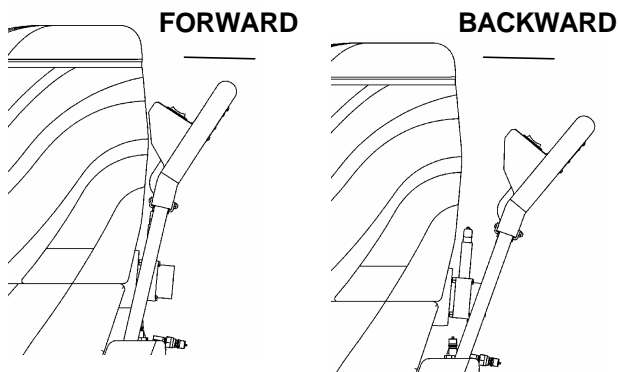


Fig. 8

pushing force in the backward direction (Figure 8). The movement of the handle causes the rotary head to tilt and apply a slight pressure on either the left side or the right side of the head. If the tilt angle is too much, the vacuum seal to the carpet will break and this will adversely affect solution recovery. There is an adjustment knob under the machine that allows the operator to increase or decrease this angle (Figure 9).

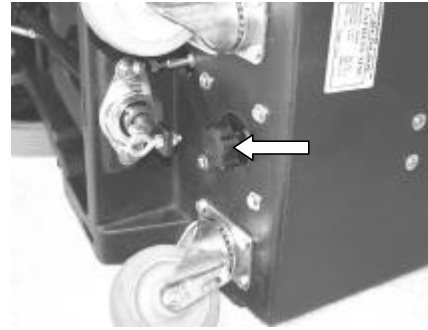


Fig 9

Turning the knob clockwise increases the amount of tilt.

The large tires in the front and the swivel casters in the rear of the Express allow the machine to easily pivot and glide in and out of tight places.

### CLEANING PATTERN

To achieve maximum results, move the Express with back-and-forth motions while overlapping preceding passes by 25 to 50 percent (Figure 10). The more

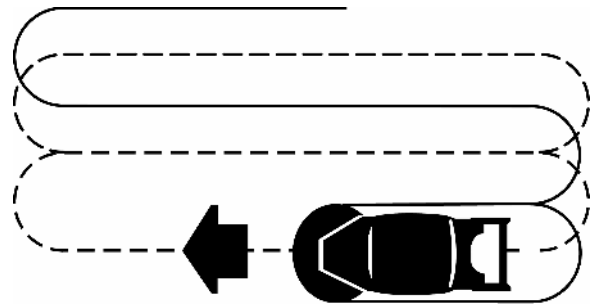


Fig. 10

soiled the area to be cleaned, the slower the speed of the cleaning passes. This allows the machine more time to work. After cleaning an area approximately six feet square, release the "momentary lever" switch or turn off the "continuous spray" switch and make vacuum-only "dry passes" over the area just cleaned. This will assure maximum water removal and a faster drying time.

### WHILE OPERATING

1. Periodically check for excessive foam buildup in recovery tank. Use a recommended foam control solution to prevent vacuum motor damage.
  - **Warning Flammable materials or reactive metals can cause an explosion or fire. Do not pick up.**
2. To clean heavily soiled areas, repeat cleaning path from a different direction.
3. Empty recovery tank every time water is added to solution tank.

# OPERATION

---

## CLEANING WITH ACCESSORY TOOLS

1. Attach solution and vacuum hose as described in the "Machine Operation – Wand" section of this manual.
2. Connect accessory tool and operate as normal (Figure 11). Remember it is only necessary to turn on the vacuum switch since activating it also turns on the solution pump



Fig. 11

**NOTE:** Before cleaning upholstery, always check cleaning instructions sewn in furniture by manufacturer.

3. After cleaning, relieve water pressure from tool before disconnecting hose. Squeeze trigger for five seconds after turning switches off.

---

## DRAINING TANKS

---

### DRAINING RECOVERY TANK

1. Turn machine off.
2. Insert supplied 45° elbow in drain valve. Place a bucket below it and slowly pull up on the handle (Figure 12).



Fig. 12

3. Rinse tank with clean water and empty at the end of the day.

**FOR SAFETY: Remove all water from machine before trying to lift it.**

---

## DRAINING SOLUTION TANK

1. Connect 3 foot utility hose to quick disconnect at back of machine and turn on vacuum switch to pump the water out or attach a vacuum hose and evacuate water with vacuum motor running (Figure 13).



Fig. 13

---

## FREEZE PROTECTION

---

**Freeze protection will require the optional accessory hose package and empty out nozzle.**

1. After draining solution tank as described in step one of the previous section (DRAINING SOLUTION TANK), attach vacuum hose as if preparing to clean with a wand.
2. Attach 3 foot long utility hose to quick disconnect at the back of the machine.
3. Place end of utility hose in end of vacuum hose and seal with hand (Figure 14).
4. Turn on vacuum (which also turns on pump) and continuous spray switch for 30 seconds. This will fill the pump and hoses with air and prevent freezing.

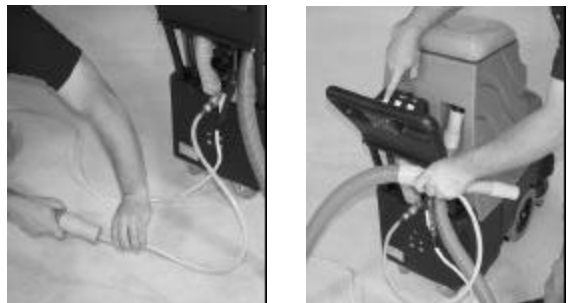


Fig. 14

# OPERATION

## MACHINE MAINTENANCE

To keep machine in good working condition, simply follow machine's daily, weekly and monthly maintenance procedures.

**FOR SAFETY: When servicing machine, unplug cord from wall outlet.**

### DAILY MAINTENANCE (Every 4 Hours of Operation)

1. Empty and rinse out recovery tank thoroughly.
2. Remove float shut-off screen from recovery tank and clean (Figure 15.)

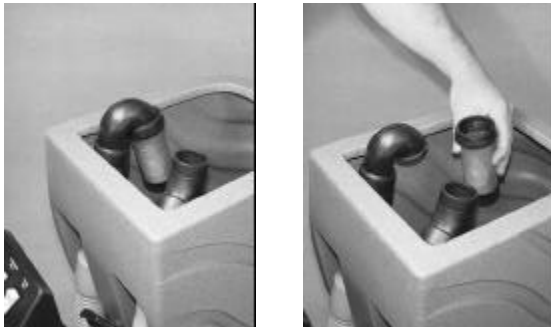


FIG. 15

3. When solution tank is empty, remove and clean solution filter screen located at the end of the hose inside the solution tank. When replacing, be certain filter screen lies in the recessed pocket at bottom of the tank. This will assure that all solution is used from tank the next time the machine is used.
4. Wipe off power cord and check for damage, replace if necessary. Coil cord neatly after use.
5. Clean machine with an all purpose cleaner and damp cloth.
6. Clean off any accumulated debris on the gearbox shaft and inside the threaded portion of the hub (Figure 16). An accumulation of debris around the

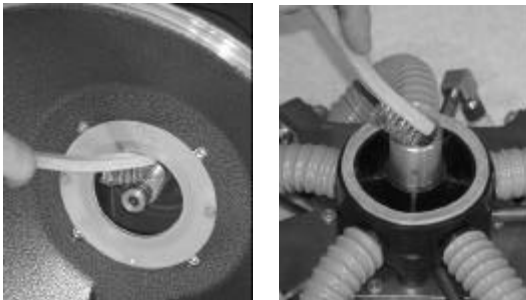


FIG. 16

gearbox shaft, if not removed, may damage the gearbox oil seal resulting in loss of oil in the gearbox. If the gearbox is operated without oil, severe damage may occur. (This requires removing the cleaning head. To do this, refer to "Repair Guide" section of this manual.)

7. Check the applicator jets in the head to ensure a proper solution flow. A jet that sprays uneven or that dribbles needs to be cleaned (Figure 17).

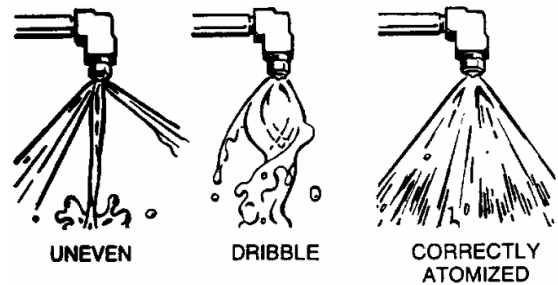


FIG. 17

8. Twist the jet out. Turn it over. Blow out any obstructions and reinstall the jet. Never use a sharp solid object to dislodge an obstruction as this will damage spray jet.
9. Rinse head assembly and cowling with fresh water to remove debris.

**FOR SAFETY: Lay machine on its right side when cleaning. If it lies on the left side oil will grain out of the gearbox.**

10. Coat the motor shaft with lubricant before reinstalling the cleaning head. Apply grease to o-ring. Locate the head onto the shaft, making sure the threads are aligned properly, and rotate the head counterclockwise (Figure 18).

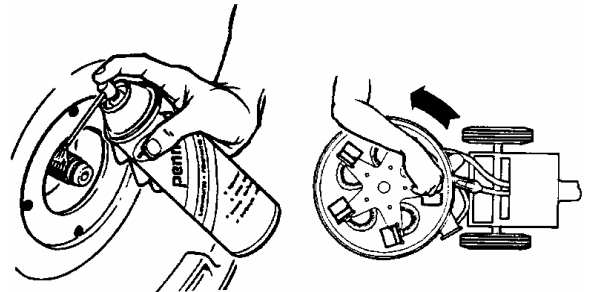


FIG. 18



# OPERATION

## WEEKLY MAINTENANCE (Every 20 Hours of Operation)

1. Inspect vacuum hoses for holes and loose cuffs.

**FOR SAFETY: When using machine, follow mixing and handling instructions on chemical containers.**

2. Inspect cord and cord grip for damage. Replace immediately if damaged.
3. Lubricate metal shaft on recovery tank drain with water resistant oil.
4. Run a vinegar solution of 50% vinegar and 50% water through the system. Let sit for 15 minutes then rinse with fresh water.

## MONTHLY MAINTENANCE (Every 80 Hours of Operation)

1. Check the oil level in the gearbox on a monthly basis. Change the oil yearly. It is very important to maintain the proper oil level. To check the oil level, remove the vent plug and look into the gearbox. Turn the "star" until the inspection hole in the gear can be seen.
2. Set the machine so the head is sitting flat. The oil level should go up to but not past the middle of the gear.
3. If oil needs to be added, use quality 80-90 weight gear oil (Figure 19). Helpful hint: When checking the oil level in the gearbox, use a toothpick as a dipstick. The oil level should measure 3/8" deep.

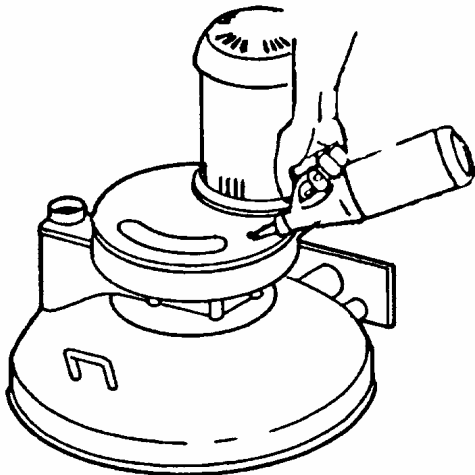


FIG. 19

4. Remove and rinse the filter screen from the flow control solenoid valve.
5. Change the felt seal (Figure 20). This is recommended after every ten hours of use. (For

step by step instructions on removing the cleaning head and seal, refer to the "Repair Guide" section of this manual.) Always keep a spare felt seal soaking in 30 weight oil. By

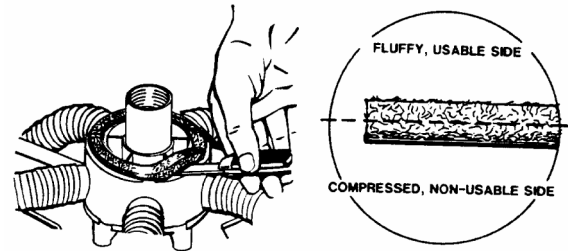


FIG. 20

immersing the felt in oil, it will expand like a sponge and provide sufficient seal for a good vacuum. Place the used seal back in the oil bath to rejuvenate. Helpful hint: An ideal container in which to soak the spare felt seal is a commercial tuna can. It is the right size and shape and does not require a large amount of oil (Figure 21).

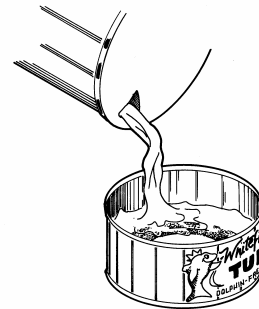


FIG. 21

6. After placing the refreshed, oil soaked felt seal in the hub, coat the surface with 30 weight oil. Lightly oil the inner hub threads before reattaching the cleaning head to the machine (Figure 22).

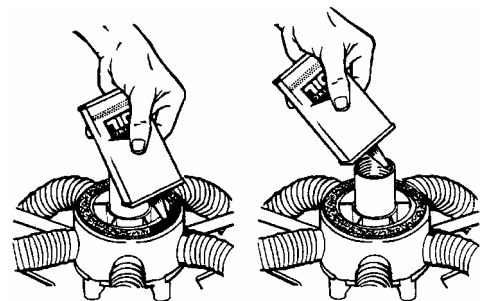


FIG. 22

7. Lubricate wheels with water resistant oil.
8. Inspect machine for water leaks and loose hardware.

# OPERATION

---

## QUARTERLY MAINTENANCE (Every 250 hours of Operation)

Check vacuum motor for carbon brush wear. Replace motor if worn to a length of 10mm (0.38") or less.

---

## REPAIR GUIDE

---

**FOR SAFETY: When servicing machine, unplug cord from wall outlet.**

---

### REMOVAL OF CLEANING HEAD

1. Unscrew the head in the same direction it turns during operation. This is clockwise when looking from the underside).

**FOR SAFETY: Be certain machine is on its right side. Otherwise oil will drain from the vent in the gearbox.**

2. Once the assembly is loose, spin it off by hand. If the cleaning head is difficult to remove, use a  $\frac{3}{4}$ " socket wrench on the exposed center nut.

---

### REPLACING THE FELT SEAL

A worn or "dried out" felt will not form a proper vacuum seal. This will impair the extraction capabilities of the unit.

1. Remove cleaning head assembly
2. Make sure the felt is saturated with oil to insure a proper seal.
3. Remove and reverse seal so that the "new" face is against the hub. Note: Alternating sides will temporarily extend the life of the felt. However, the seal may need to be replaced.
4. Reinstall head assembly. Note: When reinstalling the head assembly, the felt should compress against the seal plate during the last quarter rotation of the head. If this can not be felt, the seal may need replacement.

---

## STORING MACHINE

---

1. Before storing machine, be certain to drain and rinse tanks of all water.
2. Store machine in a dry area in the upright position.
3. Open recovery tank lid to promote air circulation.
4. If storing in cold climate, freeze protect.

**ATTENTION: Do not expose to rain. Store indoors.**

**ATTENTION: If storing machine in freezing temperatures, be sure that machine and solution system are completely drained and dry.**

---

## RECOMMENDED STOCK ITEMS

---

Refer to Parts List section for recommended stock items. Stock items are clearly identified with a bullet preceding the parts description. See example below:

PART #	DESCRIPTION	QTY.
J-30.	LID, DOME	1
• J-38GRANITE	TOP,SOL TANK ROTO GRANITE	1
J-39.5GRANITE	HANDLE,WASTE TANK ROTO GRANI	1
J-39GRANITE	WASTE TANK, ROTO GRANITE	1

# OPERATION

## TROUBLE SHOOTING

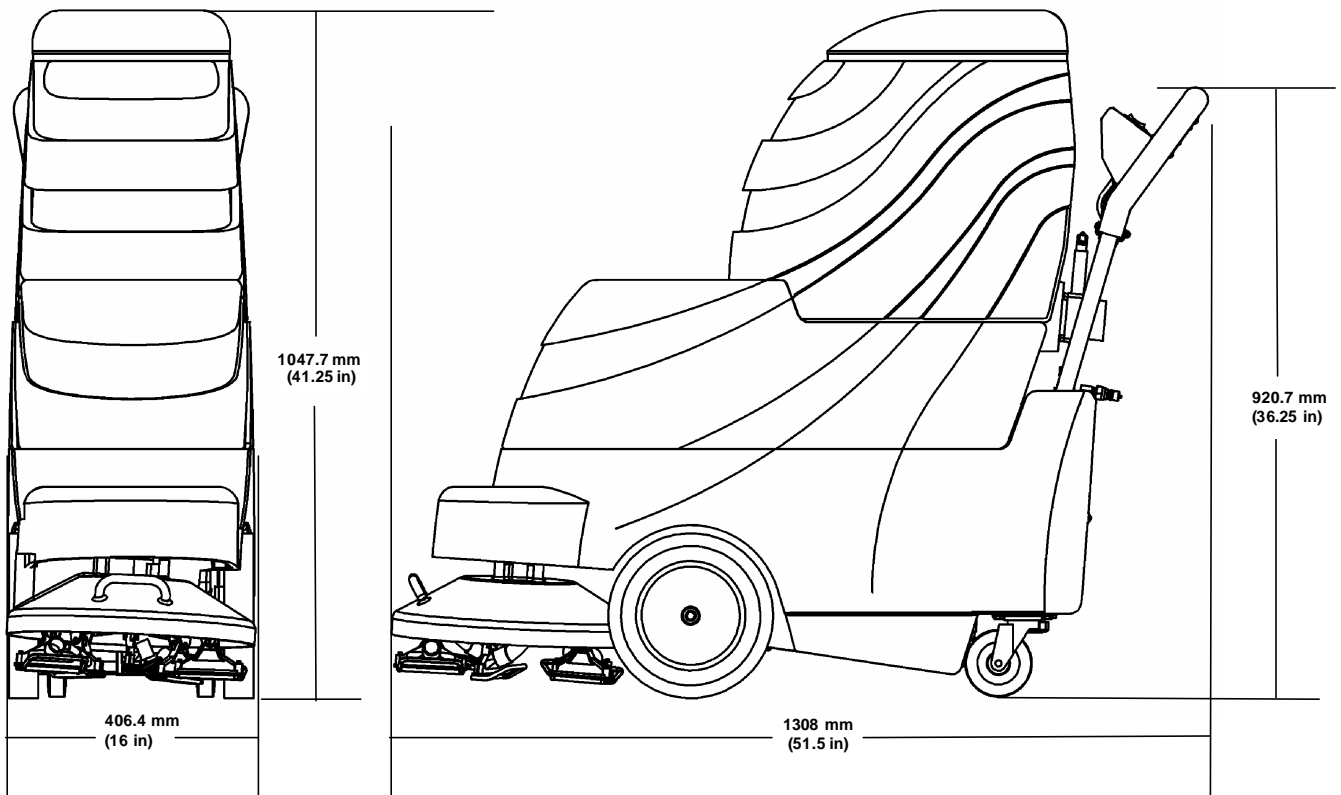
PROBLEM	CAUSE	SOLUTION
Machine does not operate.	Faulty switches or wiring.	Contact Service Center.
	Faulty power cord.	Contact Service Center.
	Building circuit breaker tripped.	Reset Breaker.
Solution pump does not operate.	Faulty switch or wiring.	Contact Service Center.
	Vacuum switch not turned on.	Activate vacuum switch
	Pump not primed.	Follow freeze protection procedure if all else fails.
	Faulty solution pump motor.	Contact Service Center.
	Faulty pump head.	Contact Service Center.
	Trigger on wand not pulled.	Pull Solution Trigger.
	Quick couplers not fully engaged.	Connect quick couplers.
Vacuum motor does not operate.	Loose or broken wiring.	Contact Service Center.
	Faulty vacuum switch.	Contact Service Center.
	Defective vacuum motor.	Contact Service Center.
	Worn carbon brushes.	Contact Service Center.
Poor solution pick-up.	Recovery tank drain valve open.	Close valve.
	Defective recovery tank lid gasket.	Replace gasket.
	Clogged float shut-off screen.	Remove recovery tank lid and clean screen.
	Loose vacuum hose connections.	Secure cuffs to hose.
	Defective vacuum hose.	Replace hose.
Uneven or no spray.	Plugged spray tips.	Clean or replace tips.
	Improper spray tip size or spray angle.	Replace with proper tips.
	Worn spray tips.	Replace spray tips.
	Solution tank low or empty.	Refill solution tank.
	Faulty solution pump.	Contact Service Center.

# OPERATION

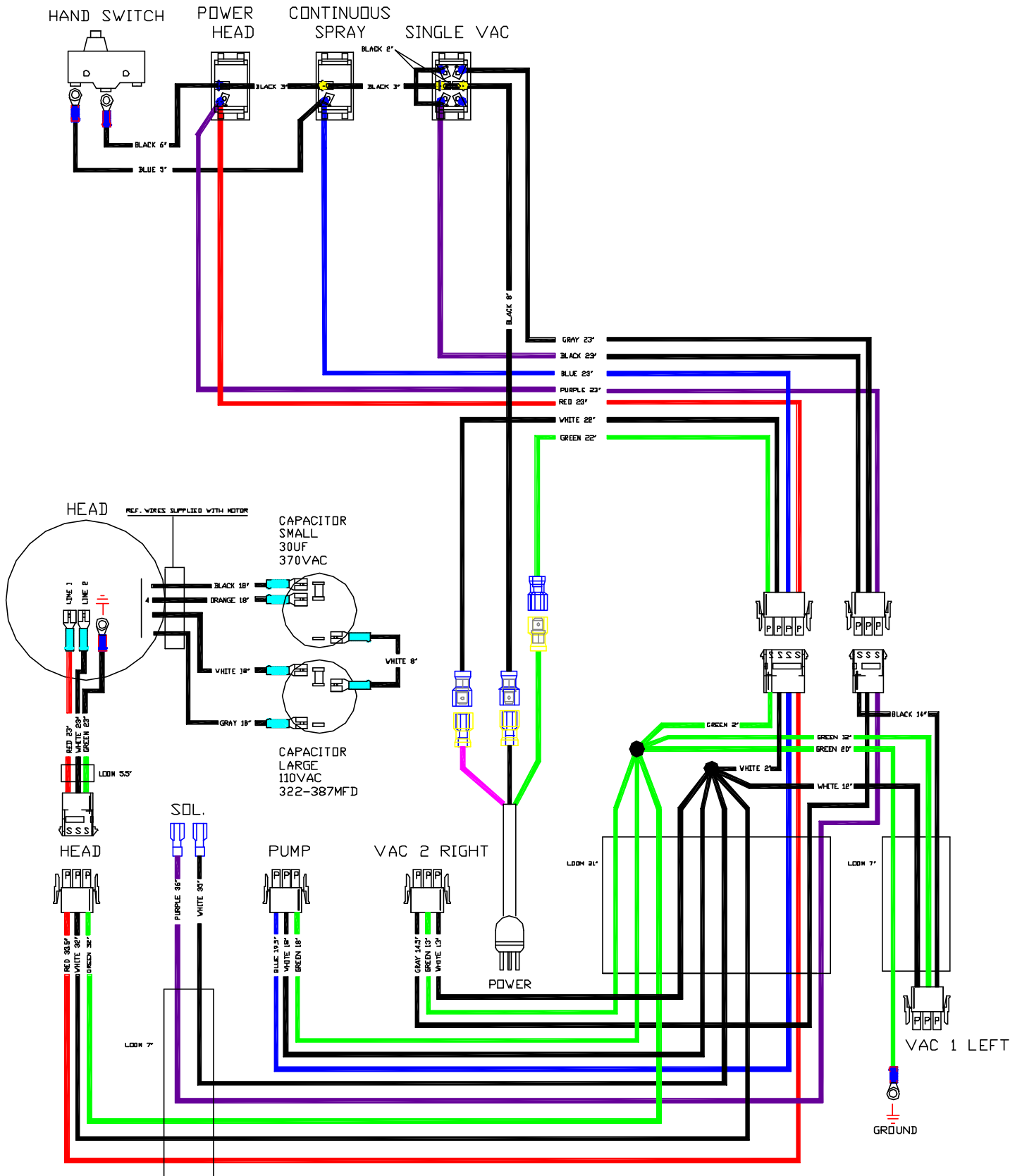
## SPECIFICATIONS

Model	EXPRESS MULTI SURFACE CLEANER
LENGTH	1308 mm (51.5 in)
WIDTH	406 mm (16 in)
HEIGHT	1047.7 mm (41.25 in)
WEIGHT	71.6 Kg (158lbs)
SOLUTION TANK CAPACITY	45 L (12 gal)
RECOVERY TANK CAPACITY	45L (12 gal)
SOLUTION PUMP	120 V, 4.13 bar (60psi), .7 A
VACUUM MOTOR – 2x 2 STAGE	@ 120 V, 8 A, 960 W; Combined 5.58 M <sup>3</sup> M (197 CFM)
SEALED WATER LIFT	2718 mm (107 in)
HEAD SPEED	130 RPM
HEAD MOTOR	120V, 1/2HP, 5.6 A, 672W
TOTAL POWER CONSUMPTION	120V, 19.5 A, 2370W
POWER CORDS	1 @ 15.2m (50 ft) 3/12
DECIBEL RATING 3 METERS (10 FT) FROM MACHINE ON CARPET	<74 db(A)

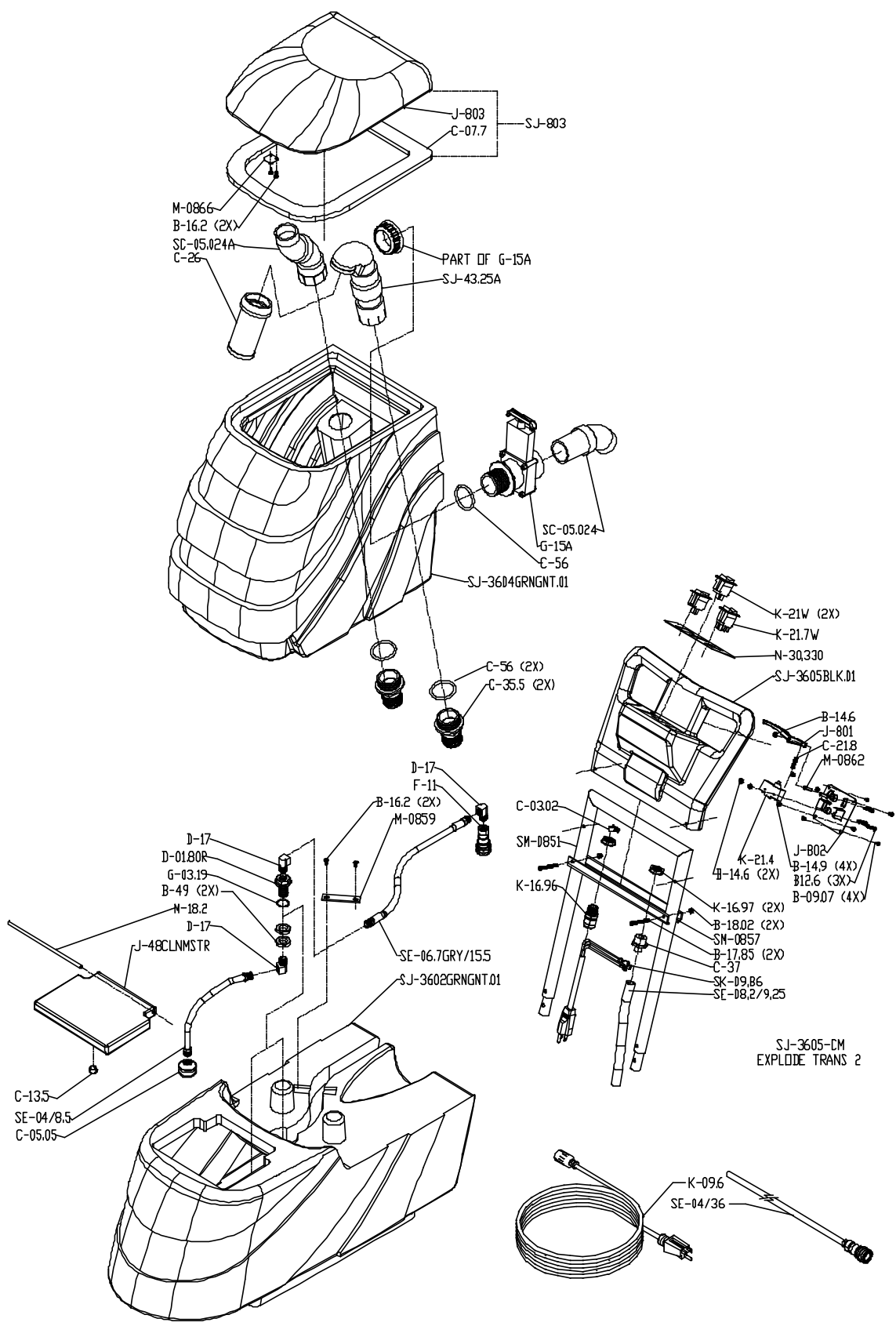
## MACHINE DIMENSIONS



120 V WIRING DIAGRAM



TANK GROUP



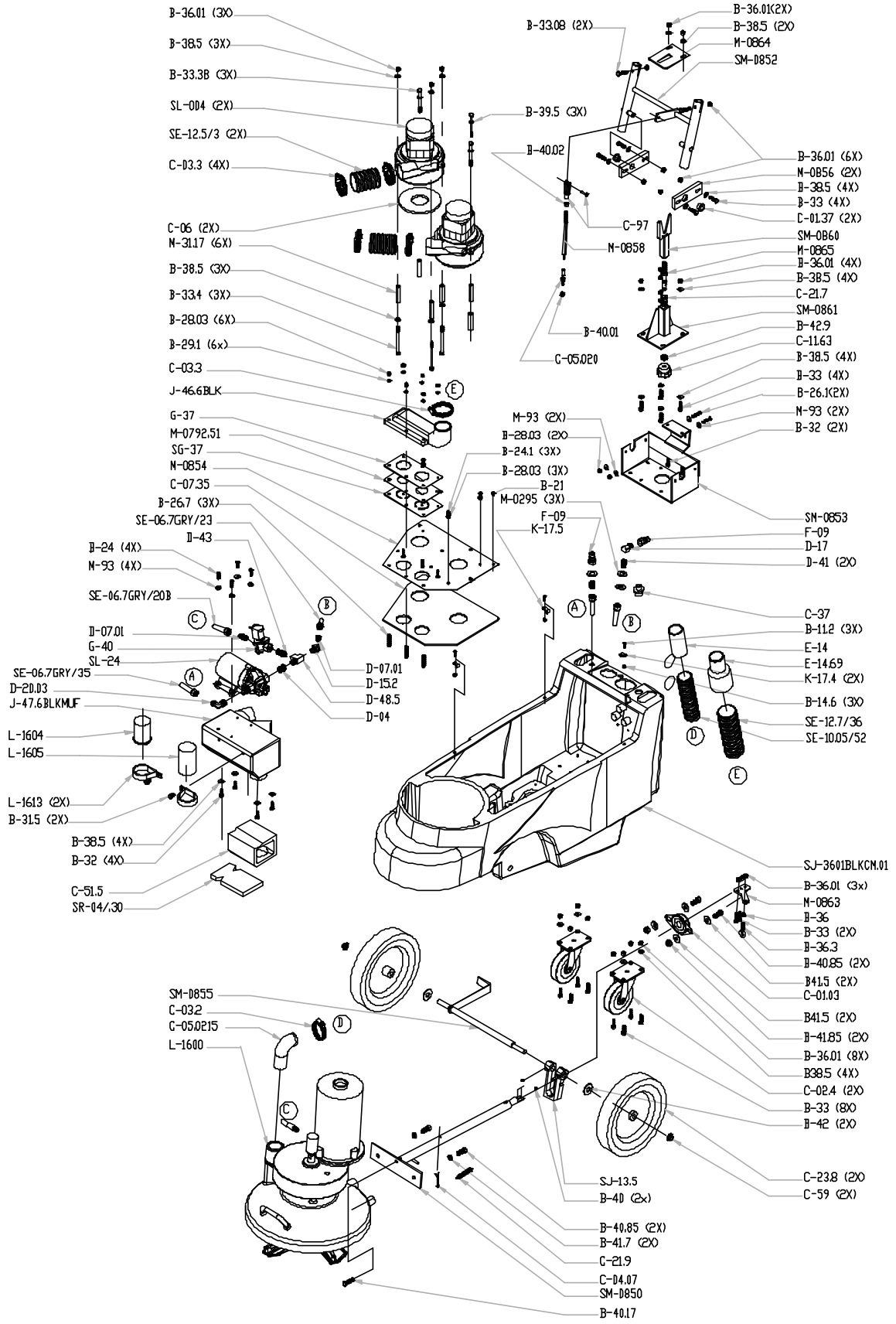
## TANK GROUP

PART #	DESCRIPTION	QTY.
B-09.07	6-32 X 3/8 PHXZINC	4
B-12.6	6-32 X 1 1/4 PHXZINC	3
B-14.6	NUT, 6-32 HEX ZINC NYLOK	3
B-14.9	NUT, 6-32 FOR PLASTIC	4
B-16.2	8-32 X 3/8 PHXSS	4
B-17.85	8-32 X 2 PHXZINC	2
B-18.02	NUT 8-32 NYLOK, ZINC	2
B-49	NUT,BULKHEAD 3/4-16 X.225	2
C-03.02	CLAMP, HOSE 1/4" #4	1
C-05.05	FILTER, 1/4NPT 50MESH	1
C-07.7	GASKET,VAC LID EXPRESS	1
C-13.5	PLUG, HOLE NYLON .562	1
C-21.8	SPRING, .250D X .90 SWITCH EXPRESS	1
C-26	FLOAT,VAC SHUT OFF ROTO	1
C-35.5	HOSE BARB,1 1/2XMPT W/FLA	2
C-37	INSERT,TUBE STRAIGHT CONN 3/8"NYLON	1
C-56	O-RING, 1.75 X .187	3
D-01.8OR	BULK HEAD, 1/4" BRASS W/O-RING	1
D-17	90 ST ELBOW 1/4" NPT	3
F-11	O/C 1/4" SOC BR SHUT OFF	2
G-03.19	O-RING,VITON 2-020 BLKHD	1
G-15A	VLV,DMP 1 1/2MPT 4BLT BDY	1
J-48CLNMSTR	LID, SOLUTION EDGE 2 GRNGRANITE CM	1
J-801	LEVER, SWITCH EXPRESS	1
J-802	PLATE, SWITCH LEVER ATTACH EXPRESS	1
J-803	LID, VAC EXPRESS	1

PART #	DESCRIPTION	QTY.
K-09.6	CORD 50' 12/3 SJT YELLOW W/LOCK	1
K-16.96	BUSHING,RELIEF 1/2 NPT	1
K-16.97	NUT,NYLON BUSHING REL.1/2	2
K-21.4	SWITCH, OMRON MOMENTARY SPDT SWITCH	1
K-21.7W	SWITCH, DPDT WATER RESIS	1
K-21W	SWITCH, SPST WATER RESIS	2
M-0859	BRACKET,SOLUTION HOSE RETAINER EXP	1
M-0862	PIVOT PIN,SWITCH LEVER EXPRESS	1
M-0866	PLATE, VAC LID RETAINER EXPRESS	1
M-18.2	HINDGE, SOLUTION LID EDGE 2 8.125"	1
N-30.330	PANEL,SW EXPRESS VAC SGRAY PWRHD	1
SC-05.024	ELBOW, 45ST VACUUM DUMP	1
SC-05.024A	ELBOW, VAC TANK ASM EXPRESS	1
SE-04/36	HOSE, 1/4 TYGON 36" EXPRESS W/OOC	1
SE-04/8.5	HOSE,1/4 TYGON 8.5" 1/4MPTX1/4MPT	1
SE-06.7GRY/15.5	HOSE, 1/4SOL 15.5" 1/4MPT X 1/4MPT	1
SE-08.2/9.25	HOSE,9.25"LNG,3/8" LIQUID TIGHT TUB	1
SJ-3602GRNGNT.01	DRILLED TANK, SOL EXPRESS GRNGRNT	1
SJ-3604GRNGNT.01	DRILLED TANK, VAC EXPRESS GRNGRNT	1
SJ-3605BLK.01	HANDLE,DRILD BLK 3 SWITCH	1
SJ-43.25A	VAC FILTER ASM, EXPRESS	1
SJ-803	LID, COMPLETE VAC W/GASKET EXPRESS	1
SK-09.86	CORD,PIG TAIL EXPRESS COMP	1
SM-0851	COMP UPPER HANDLE ASM,EXPRES PAINTD	1
SM-0857	COMP BRKT CORD MOUNT,EXP PAINTD	1

- RECOMMENDED STOCK ITEMS

BASE GROUP





# PARTS LIST

# EXPRESS MULTI SURFACE CLEANER

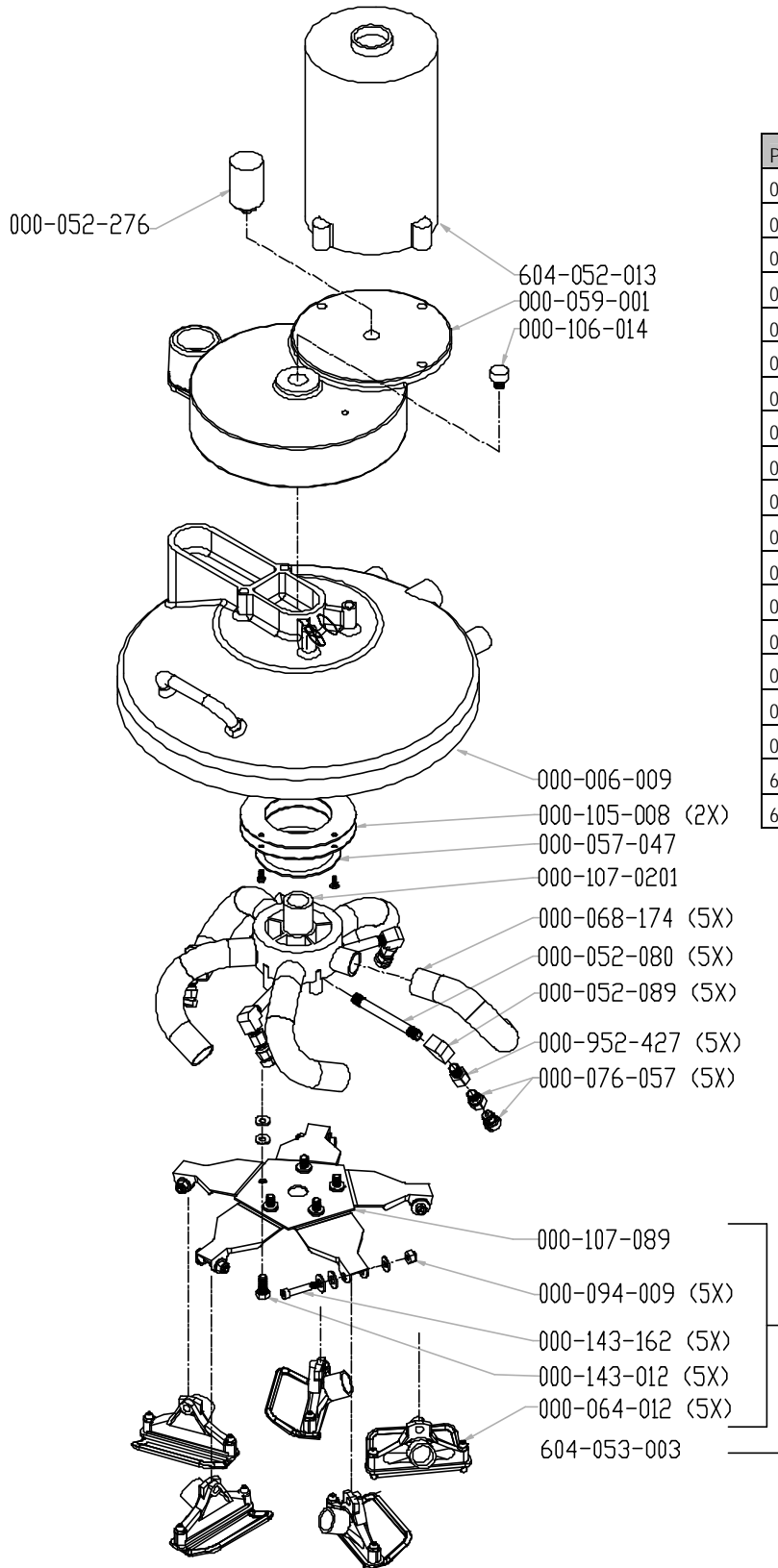
## BASE GROUP

PART #	DESCRIPTION	QTY.
B-11.2	6-32 X 3/4 FHXSS 100 DEG	3
B-14.6	NUT, 6-32 HEX ZINC NYLOK	3
B-21	10-32 X 5/16 PHXSS	1
B-24	10-32 X 3/4 PHXSS	4
B-24.1	10-32 X 3/4 PHXZINC	3
B-26.1	10-32 X 1 1/4 PHXZINC	2
B-26.7	10-32 X 1 1/2 PHXZINC	3
B-28.03	NUT, 10-32 NYLOK ZINK	11
B-29.1	WASHER,#10 SS	6
B-31.5	1/4-20 X 1/2 HEX CP	2
B-32	1/4-20 X 3/4 HEX HD CP	6
B-33	1/4-20 X 1 HEX HD CP	18
B-33.08	1/4-20 X 1 1/2 HEX HD ZINC	2
B-33.38	1/4-20 X 3 HEX HD CP	3
B-33.4	1/4-20 X 3 3/4 HEX CP	3
B-36	NUT 1/4-20 HEX CP	1
B-36.01	NUT 1/4-20 NYLOK ZINK	26
B-36.3	EYE BOLT, 1/4-20 X 2" ZINC	1
B-38.5	WASHER, 1/4 FLAT CP	28
B-39.5	WASHER, 1/4 INT. STAR	3
B-40	SET SCREW 1/4-28x3/16 SS	2
B-40.01	NUT, 1/4-28 NYLOCK ZINC	1
B-40.02	NUT, 1/4-28 ZINC	1
B-40.17	5/16-18 X 1 1/4 HEX HD SS	1
B-40.85	3/8-16 X 1 HEX HD SS	4
B-41.5	WASHER, 3/8 FLAT ZINC	4
B-41.7	WASHER, 3/8 LOCK WASHER SS	2
B-41.85	NUT, 3/8-16 NYLOK ZINC	2
B-42	WASHER 9/16 x 1 1/4 FLAT	2
B-42.9	NUT, 7/16-20 JAM NUT ZINC	1
C-01.03	BEARING,BALL 2-BOLT FLANGE 3/4"BORE	1
C-01.37	BUSHING,FLANGED BRONZE.502IDX.875OD	2
C-02.4	CASTER, 4" SWIVEL	2
C-03.2	CLAMP, HOSE 2" #24	1
C-03.3	CLAMP, HOSE 2 1/4 #32	5
C-04.07	COTTER,PIN 1/8 X 1.675" STEEL	1
C-05.020	BALL JOINT ASSM 1/4-28	1
C-05.0215	ELBOW, 90 1.5 X 1.5 SS	1
C-06	GASKET, BLOWER/ARLON 1/4"	2
C-07.35	GASKET, VAC SEAL EXPRESS BASE	1
C-11.63	KNOB, HEIGHT ADJUSTMENT EXPRESS	1
C-21.7	SPRING,.680D X 1.25H EXPRESS	1
C-21.9	SPRING, .375OD X 3" TEE BAR EXPRESS	1
C-23.8	WHEEL 10" - 1/2"BORE	2
C-37	INSERT,TUBE STRAIGHT CONN 3/8"NYLON	1
C-51.5	MUFFLER, FOAM EXPRESS	1
C-59	PUSHNUT FASTNER, 1/2 CAP	2

PART #	DESCRIPTION	QTY.
C-97	YOKE END LINKAGE,1/4-28 STEEL	1
D-04	BUSHING 3/8 X 1/4 NPT BR.	1
D-07.01	COUP 1/4 NPT X -4 SAE	2
D-15.2	45 ST ELBOW 1/4 NPT	1
D-17	90 ST ELBOW 1/4" NPT	1
D-20.03	ELBOW 90 3/8NPT X -6 SAE	1
D-41	NIPPLE, 1/4 NPT CLOSE BR	2
D-43	NIPPLE, 1/4 HEX BRASS	1
D-48.5	TEE,STREET 1/4 NPT BRASS	1
E-14	CUFF, 1 1/2SLIP X 1 1/4HOSE	1
E-14.69	CUFF,1 1/2"SLIP X 2" WIRE SUPP HOSE	1
F-09	Q/C 1/4" PLUG BR SHUT OFF	2
G-37	VALVE,VAC SHUT OFF DUAL	1
G-40	VALVE, SOLENOID 120V	1
J-46.6BLK	MANFLD, BLWR INTAKE EXPRESS	1
J-47.6BLKMU	MUFFLER & PUMP MOUNT BLK EXPRESS	1
K-17.4	CLAMP,NYLON CABLE 1/4"	2
K-17.5	CLAMPS, NYLON CABLE 3/8	1
L-1600	EXPRESS HEAD ASSEMBLY COMPLETE 110V	1
M-0295	WASHER, 1.125OD X .562ID	3
M-0792.51	PLATE,FLAPPER VALVE-EDGE	1
M-0854	PLATE ASM,VAC MNT PARALLEL EXPRESS	1
M-0856	BUSHING BLOCK,HANDLE EXPRESS	2
M-0858	BAR, CLEVIS ADJUST EXPRESS	1
M-0863	HEAD TILT ARM PLATED	1
M-0864	SLIP PLATE-ADJUST WEDGE SUPPORT EXP	1
M-0865	ADJUST, GUIDE BAR SCREW EXPRESS	1
M-31.17	STANDOFF, 5.7 EDGE 2.260"	6
M-93	WASHER, .219 X .625 18GA	8
SE-06.7GRY/20B	HOSE, 1/4SOL 20" -4SAE X 1/8MPT	1
SE-06.7GRY/23	HOSE, 1/4SOL 23" -4SAE X 1/4FPT	1
SE-06.7GRY/35	HOSE, 1/4SOL 35" -6SAE X 1/4FPT	1
SE-10.05/52	HOSE, VAC 1.5" FLEX 52"	1
SE-12.5/3	HOSE,2"FLEX EXH 3" LONG	2
SE-12.7/36	HOSE, 2" WIRE X 36"LONG	1
SG-37	VALVE,DUAL FLPR MODI EDGE	1
SJ-13.5	COMP,DRLD & PNTED HEAD LIFT LOCK EX	1
SJ-3601BLKCM.01	BASE,DRLD 2XVAC PAR,100PSI BLK ROTO	1
SL-004	BLOWER,2STG 120V 5.7COMP #116392-00	2
SL-24	PUMP,DIAPH 60PSI 120V WWIR&SWITCH	1
SM-0850	COMP LIFT BAR ASMBLY,EXPRESS PAINTD	1
SM-0852	COMP LOWER HANDLE ASMEXPRES PAINTD	1
SM-0853	CMP BRKT LWR HNDL MNT,EXPRES PAINTD	1
SM-0855	COMP AXLE ASM,EXPRESS PAINTD	1
SM-0860	COMP ADJUST BAR ASM,EXPRES PAINTD	1
SM-0861	COMP ADJUST GUIDE BAR ASM,EXP PAINTD	1
SR-04/30	FOAM, MUFFLER 5.5 X 3.25	1

### • RECOMMENDED STOCK ITEMS

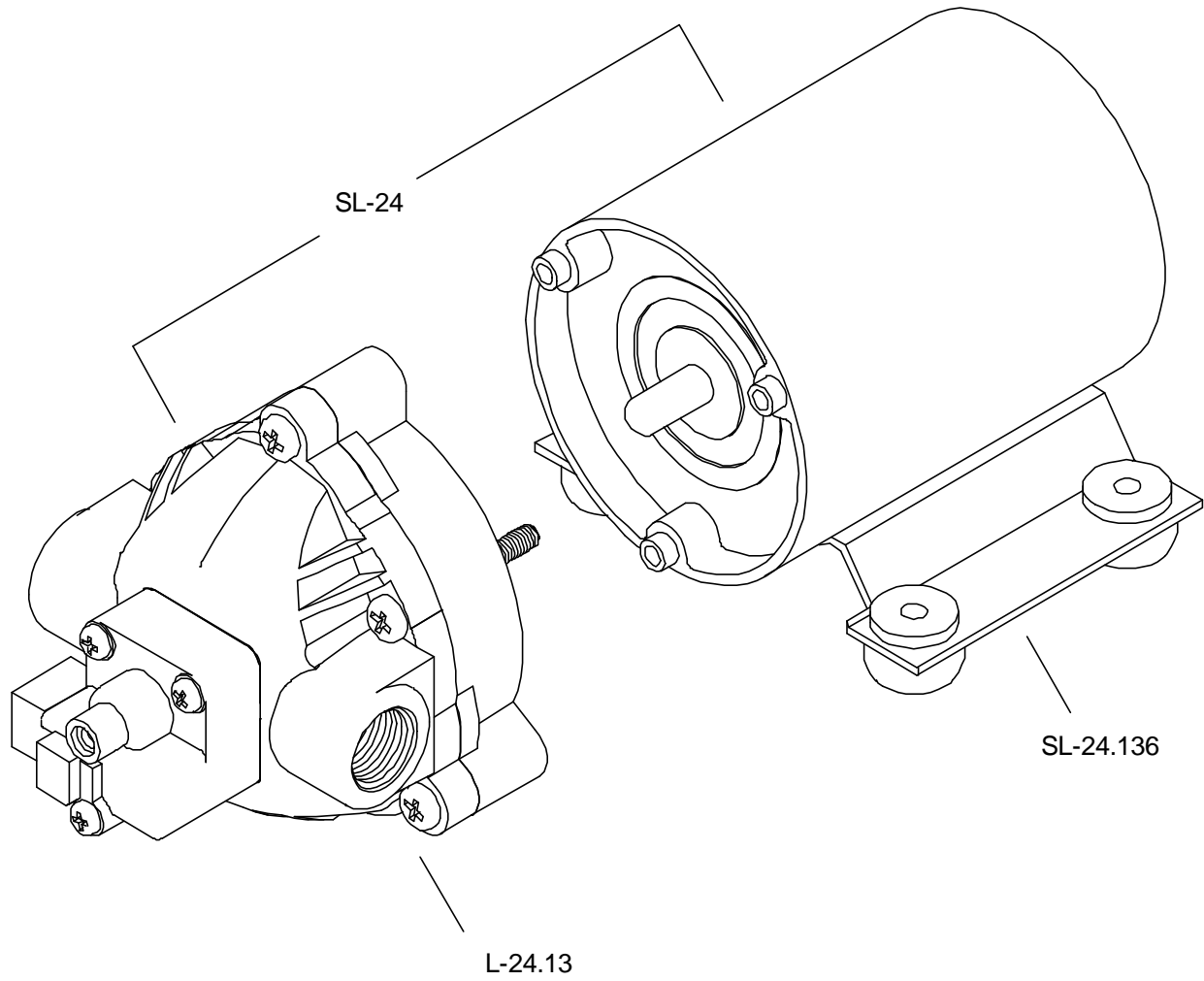
ROTARY HEAD ASSMEBLY



PART NO	DESCRIPTION	QTY.
000-006-009	BASE, HIGH SPEED	1
000-052-080	NIPPLE, 1/8" X 4" BRASS	5
000-052-089	ELBOW, 1/8" BRASS FEMALE	5
000-052-276	ROTARY UNION, 1/8" NPT	1
000-052-427	BUSHING, 1/8" MPT X 1/8" FPT	5
000-057-047	GASKET, FELT HUB	1
000-059-001	GEARBOX, COMPLETE - SPUR	1
000-064-012	HEAD, RX SKID ASSEMBLY	5
000-068-174	HOSE, 1" ID GRAY - VACUUM	5
000-076-057	JET, 110015 QUICK CONNECT (JET, O-RING, BODY)	5
000-094-009	NUT, 1/4-20 S/S NYLOK	5
000-105-008	PLATE, CAST BASE - SEAL	2
000-106-014	PLUG, GEARBOX VENT	1
000-107-0201	HUB, DOUBLE THREAD RX VACUUM	1
000-107-089	STAR, STAINLESS STEEL HEAT TREATED	1
000-143-012	SCREW, 5/16-18 X 3/4" S/S HEX HD CAP SCREW	5
000-143-162	SCREW, 5/16" X 1", 1/4-20 S/S STRIPPER	5
604-052-013	RX EXPRESS III ELECTRIC MOTOR ASSEMBLY	1
604-053-003	EXPRESS VACUUM HEAD ASSEMBLY	1

# PARTS LIST

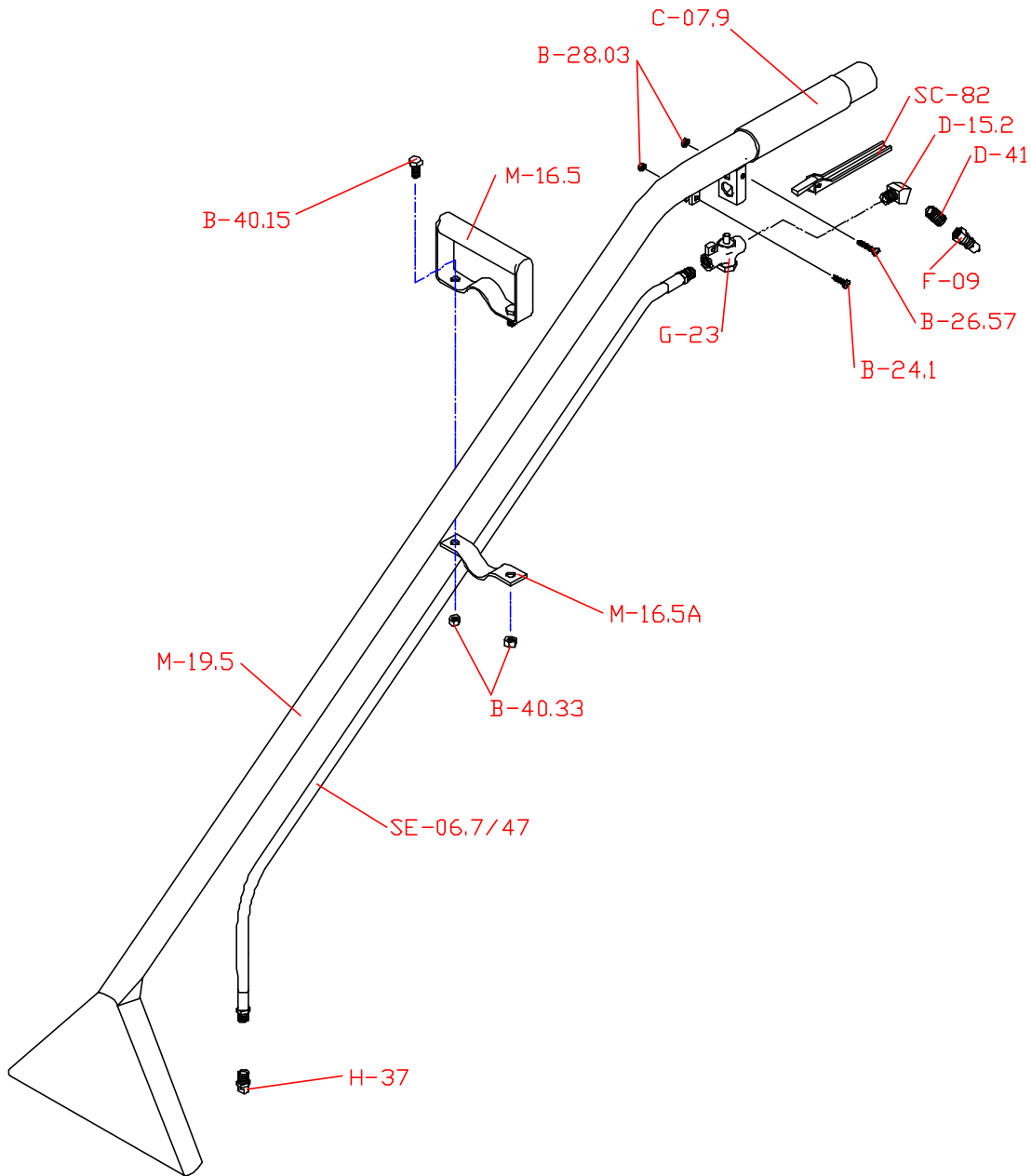
## PUMP 60 PSI BREAKDOWN



PART #	DESCRIPTION	QTY.
• SL-24	PUMP,DIA 60 PSI 120V W/WIR & SW	1
• L-24.13	PUMP,DIA HEAD ASM W/SWT 60PSI	1
• SL-24.136	MOTOR, 60PSI 120V W/PLUGS	1

- RECOMMENDED STOCK ITEMS

FLOOR TOOL

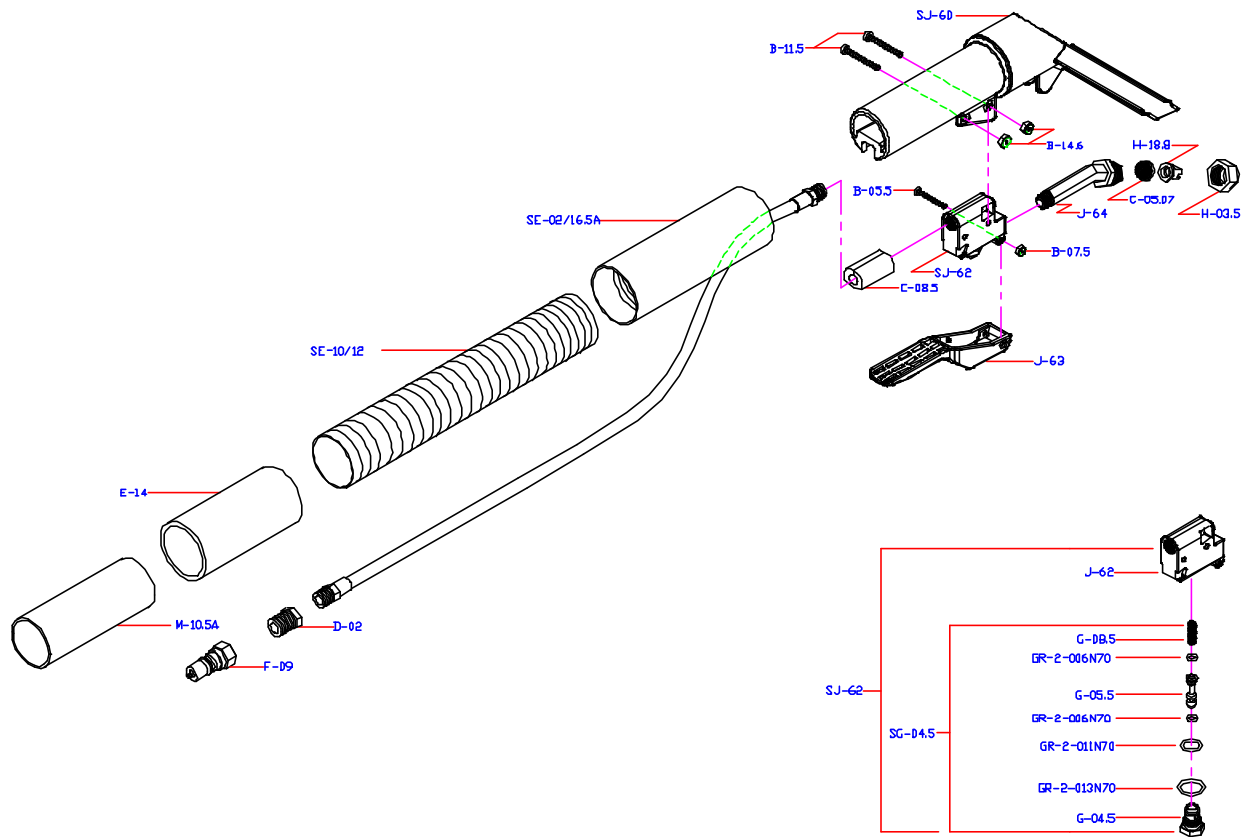


PART #	DESCRIPTION	QTY.
B-24.1	10-32 X 3/4 PHXZINC	1
B-26.57	10-32 X 1 3/8 PHX ZINC	1
B-28.03	NUT, 10-32 NYLOK ZINK	2
B-40.15	5/16-18 X 3/4 HEX CP	2
B-40.33	NUT 5/16-18 NYLOCK, ZINC	2
C-07.9	GRIP, FLRTOOL 1 1/2 X 6	1
D-15.2	45 ST ELBOW 1/4 NPT	1
D-41	NIPPLE, 1/4 NPT CLOSE BR	1

PART #	DESCRIPTION	QTY.
• F-09	Q/C 1/4" PLUG BR SHUT OFF	1
G-23	VALVE, KNGSTN STD S BND	1
• H-37	JET, 11006 E VEE BRASS	1
M-16.5	HOE HANDLE,ECONO FLRTL	1
M-16.5A	"U"CLAMP,SUPP HOE HNDL EC	1
M-19.5	WAND,FLOORTOOL COMP. ECONO	1
SC-82	TRIGGER,COMP KNGSTN VALVE	1
SE-06.7/47	HOSE,1/4 SOL 47"FLRTL ECO	1

• RECOMMENDED STOCK ITEMS

HAND TOOL



PART #	Description	QTY.
B-05.5	4-40 X 7/8 PHXZINC	1
B-07.5	NUT, 4-40 HEX ZINC NYLOK	1
B-11.5	6-32 X 1 PHXZINC	2
B-14.6	NUT, 6-32 HEX ZINC NYLOK	2
B-16.2	8-32 X 3/8 PHXSS	1
B-18.01	NUT 8-32 NYLOK, SS	1
C-05.07	FILTER, 4" DETAIL TOOL 50 MESH	1
C-08.5	GROMMET, CLEAR DETAIL TOOL	1
D-02	BUSHING 1/4 X 1/8 NPT BR	1
E-13.5	CUFF, EXTRN HOSE 1 1/2SLPX 1 1/4HOSE	1
E-14	CUFF, 1 1/2SLIP X 1 1/4HOSE	1
F-09	O/C 1/4" PLUG BR SHUT OFF	1
G-04.5	GUIDE, VALVE STEM HEX BRASS	1
G-05.5	STEM, VALVE SS 4" DETAIL TOOL	1
G-08.5	SPRING, VALVE 4" UPH TOOL	1

PART #	Description	QTY.
GR-2-006N70	O-RING, 2-006 BUNA 70DR	2
GR-2-011N70	O-RING, 2-011 BUNA 70DR	1
GR-2-013N70	O-RING, 2-013 BUNA 70DR	1
H-03.5	CAP NUT, TEE JET POLYPRO	1
H-18.8	JET, 110015 STD FLAT SPRYTIP PLSTIC	1
J-62	VALVE, 4" DETAIL TOOL AS MOLDED	1
J-63	TRIGGER, 4" DETAIL TOOL	1
J-64	ELBOW, 4" DETAIL TOOL	1
M10.5A	COUPLER, 1.5" VAC HOSE ALUM	1
SE-02/16.5A	HOSE, 1/8 BLK 16.5" ASM W/EXTRN CUFF	1
SE-10/12	HOSE, VAC 1 1/4 GREY/BLACK 12" LONG	1
SG-04.5	STEM ASM 4" TOOL BUNA W/BRASS CAP	1
SJ-60	HANDLE ASM, 4" DETAIL TOOL	1
SJ-62	VALVE, NYLON COMPLETE STD 4" DETAIL	1

## WARRANTY POLICY

---

### PARTS ONLY – STANDARD REPLACEMENT POLICY

---

For the first 12 months from the date of purchase, CleanMaster will warranty all components against material and workmanship defects. In the event of a part failure, please call your distributor to obtain a replacement part.

If you are unable to contact your distributor, you may contact CleanMaster parts direct at (425) 775-7276. You will be asked to provide the machine serial number, date of purchase and a detailed description of the failure including the part number. An RMA number for the return of the failed part will be issued at the time the order is taken. This number should be marked on the outside of the package containing the returned part.

CleanMasters policy is to ship warranty parts either COD or on open account with previously established credit. Your account will be billed for the part and freight until the failed part has been returned and inspected. The customer is responsible for additional charges for expedited freight. It is also the responsibility of the customer to pay the return freight on the failed part. If warranty is granted, credit or a refund will be issued for the purchase price of the part and for the cost of ground freight. If warranty is denied, you will be contacted. A credit will not be issued for either freight or the part. The failed part will be returned to you at your request.

CleanMaster will pay labor for warranty repairs on new machines for 90 days from the date of purchase and must be pre-approved. CleanMaster will pay *Authorized Distributors* at the current warranty labor rate.

---

### HOW TO OBTAIN A RETURN AUTHORIZATION

---

Prior to shipping any part, assembly or machine to CleanMaster a Return Authorization Number must be requested from CleanMaster and displayed prominently on the outside of all packages containing parts or machines for warranty consideration to be processed and in effect. A Return Authorization can be obtained by calling CleanMaster Service Department at 1-425-775-7276. The machine and/or part serial number must be communicated to CleanMaster Customer Service to receive a Return Authorization Number. Any machine, part or assembly must be returned with its original serial number as affixed by CleanMaster for warranty consideration to be in effect. All returns will be sent to CleanMaster at 11015 47<sup>th</sup> Avenue West, Mukilteo Wa. 98275. Fax communications can be sent to 1-800-426-4225 and emails sent to [cm1@cleanmaster.com](mailto:cm1@cleanmaster.com).

# WARRANTY

---

CleanMaster warrants the Express Cleaning Machine against defects in material and workmanship under normal use and service. CleanMaster, hereby, extends a limited three-year warranty on the polyethylene machine housing of the Express against cracking or leaking and a one-year warranty on the rest of the machine against manufacturing defect or workmanship subject to the terms and conditions that follow.

## TERMS AND CONDITIONS

The warranty obligation extends only to the repair or replacement of parts, assemblies or machine housing found upon examination by CleanMaster to be defective in manufacturing or workmanship, and CleanMaster reserves the right to make that determination. Any adjustment or replacement of defective parts made under this warranty does not void the warranty; neither does it extend the original warranty beyond its term.

Repair or replacements of any machine component(s) with any part(s) other than genuine CleanMaster parts will immediately void this and all warranties.

Filters, brass fittings, seals, o-rings and quick disconnects are considered expendable in normal use and are not covered by this warranty.

Dry cleaning solvents cannot be used in the Express.

This warranty shall not cover any Express machine housing, part or assembly if there is evidence of misuse, alteration, owner neglect, lack of proper maintenance, improper chemical use, improper voltage, abuse, accident, freezing, flood, fire, etc. and any and all circumstances beyond CleanMaster's control.

In no event shall CleanMaster be liable for loss of use, incidental or consequential damages or any damages to persons or property.



11015 47<sup>th</sup> AVENUE WEST, MUKILTEO WA 98275 USA  
Phone 800-426-8972, 425-775-7272; Fax 800-426-4225;  
Website: <http://www.cleanmaster.com>

PLEASE RETURN REGISTRATION WITHIN 10 DAYS OF RECEIVING YOUR EXPRESS CLEANING MACHINE.

## KEEP THIS COPY FOR YOUR RECORDS

<b>WARRANTY REGISTRATION</b>	Date Received
	Registered Owner(s)
	Address
	Phone Number
	Fax Number
	Email Address
	Machine Serial Number
	Purchased From (Distributor)

# WARRANTY

---

CleanMaster warrants the Express Cleaning Machine against defects in material and workmanship under normal use and service. CleanMaster, hereby, extends a limited three-year warranty on the polyethylene machine housing of the Express against cracking or leaking and a one-year warranty on the rest of the machine against manufacturing defect or workmanship subject to the terms and conditions that follow.

## TERMS AND CONDITIONS

The warranty obligation extends only to the repair or replacement of parts, assemblies or machine housing found upon examination by CleanMaster to be defective in manufacturing or workmanship, and CleanMaster reserves the right to make that determination. Any adjustment or replacement of defective parts made under this warranty does not void the warranty; neither does it extend the original warranty beyond its term.

Repair or replacements of any machine component(s) with any part(s) other than genuine CleanMaster parts will immediately void this and all warranties.

Filters, brass fittings, seals, o-rings and quick disconnects are considered expendable in normal use and are not covered by this warranty.

Dry cleaning solvents cannot be used in the Express.

This warranty shall not cover any Express machine housing, part or assembly if there is evidence of misuse, alteration, owner neglect, lack of proper maintenance, improper chemical use, improper voltage, abuse, accident, freezing, flood, fire, etc. and any and all circumstances beyond CleanMaster's control.

In no event shall Cleanmaster be liable for loss of use, incidental or consequential damages or any damages to persons or property.



11015 47<sup>th</sup> AVENUE WEST, MUKILTEO WA 98275 USA  
Phone 800-426-8972, 425-775-7272; Fax 800-426-4225;  
Website: <http://www.cleanmaster.com>

PLEASE RETURN REGISTRATION WITHIN 10 DAYS OF RECEIVING YOUR EXPRESS CLEANING MACHINE.

## RETURN THIS COPY

<b>WARRANTY REGISTRATION</b>	Date Received
	Registered Owner(s)
	Address
	Phone Number
	Fax Number
	Email Address
	Machine Serial Number
	Purchased From (Distributor)