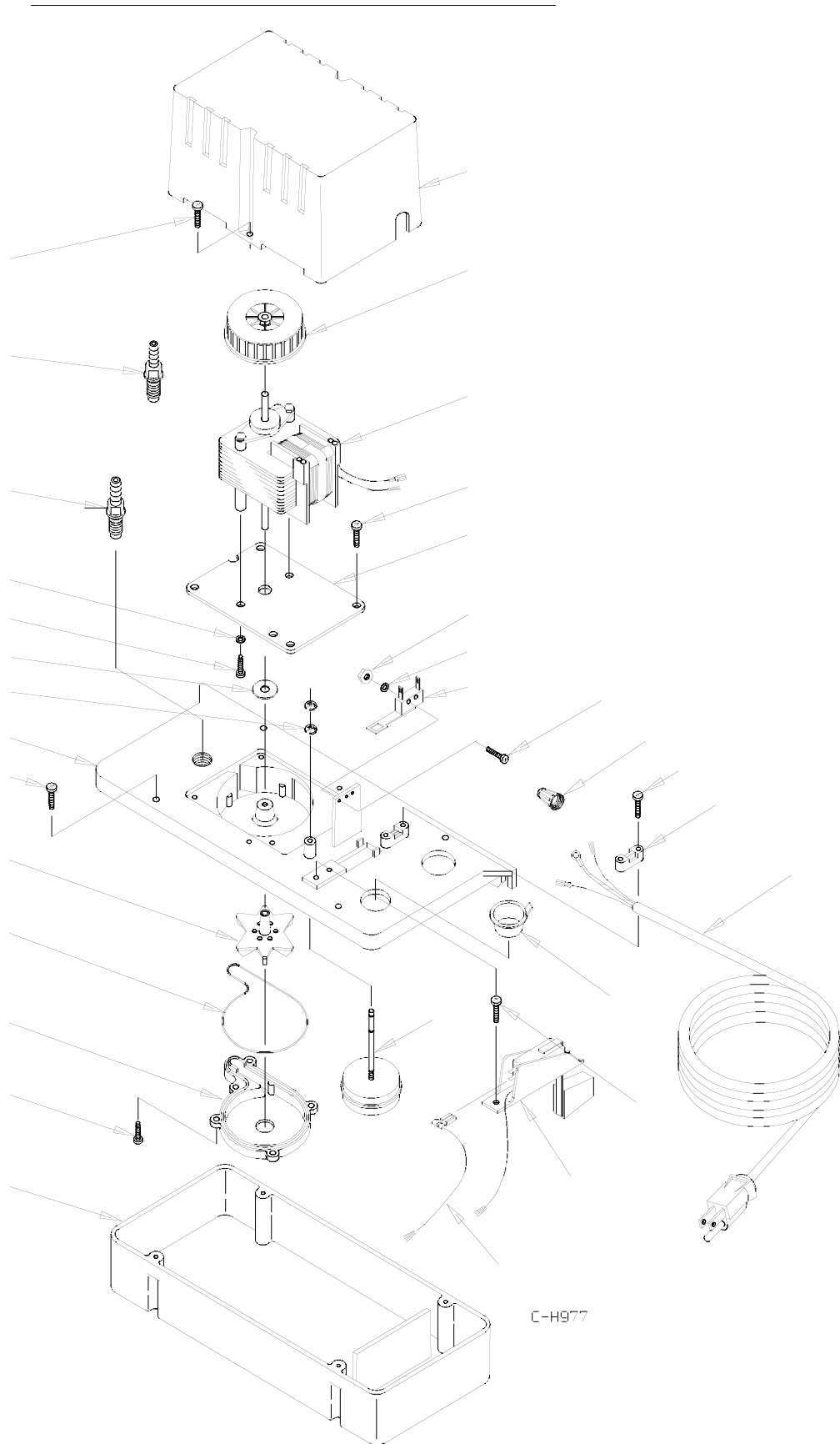


# CENTRIFUGAL PUMP LEAKING INSPECTION CHECKLIST

- Is the control panel working correctly? With the unit plugged in and “OFF”, press purge, listen for pump operation. If pump is running continue along checklist. If pump is not running refer to wiring diagram.
- Unwrap and straighten 40’ drain tube. Check for kinks.
- To access pump: On the DZ1200 remove the six 3/8” bolts from front cover. Two located on top, in front of cover. Two located on bottom near front feet of unit and two more located 180 degrees behind those. All can be identified as they are all 3/8”. Remove front cover.
- On DZ2400 lay unit on it’s back and unscrew the four 7/16” bolts on the gray bucket.
- With pump exposed, inspect “\_” clear drain tube entering pump on right side to insure it is properly seated into pump. If too short or kinked it may need to be replaced.
- The bottom of this tube should have a 35-degree cut in to it to prevent water from backing up into drip tray.
- On the 1200 carefully snip the zip tie holding coiled power cord and remove the two 5/16” mounting sheet metal screws located to the rear of the pump. On the 2400 this will not be necessary.
- Remove pump out tube from black pump out fixture located on left side of pump. Careful not to break fixture.
- Unscrew fixture. This is the check valve assembly.
- Look into the bottom of assy. Using needle nose pliers carefully remove bottom of check valve assembly. A small bearing should fall out so be careful not to loose it. Now you can inspect for debris in assembly and clean accordingly. However reservoir must also be inspected for dirt and debris.
- Remove the pump just far enough to access the two Phillips screws located one on each side of pump cover.
- With cover removed visually inspect micro-switch for looseness. If loose, tighten gently. Over tightening will cause switch to bind up inside and fail. If switch is snug and no parts missing, continue.
- Check action of switch by lifting switch lever and letting it fall on it’s own. If switch lever hangs up, replace switch. Be careful not to over tighten mounting screws and nuts.
- Check to see if impellor is spinning freely by spinning the black plastic wheel located on top of motor.
- Inspect to insure clips on float stem are in place.
- Remove the remaining four Phillips screws from the top of the pump assembly and separate it from the blue reservoir.
- Inspect bottom of reservoir for debris and dirt build up. Clean accordingly.
- Visually inspect impellor cover and gasket for cracks, warps or exposed gasket material.
- Remove impellor cover and check for debris in housing.
- Check to insure float moves freely up and down and is not restricted. If restricted, clean float stem access port. A Q-tip works well for this procedure.
- Assemble in reverse order, run dehumidifier through several pump outs to insure repairs.



C-H977