

**SERVICE MANUAL
PARTS LIST**

WET / DRY VACUUM CLEANER

MODELS:

**AI-1260P
AI-1660P
AI-1960P**

INDEX

	PAGE
I.- FINAL TEST PRODUCT SAFETY	3
II.- HEAD REPLACEMENT PROCEDURES	3
III.- TROUBLE SHOOTING CHART	5
IV.- VACUUM CLEANER ASSEMBLY	6
V.- VACUUM CLEANER PARTS LIST	7
VI.- HEAD ASSEMBLY	9
VII.- PART LIST AND HEAD ASSEMBLY	10
VIII.- WIRING DIAGRAM	11
IX.- ELECTRICAL RATING	11

I.- FINAL TEST FOR PRODUCT SAFETY

At the completion of any repair the product should be electrically tested for running and electric strength as follows

1.- ELECTRIC TEST

- 1).- Set hip-pot test meter at 1500 volts.
- 2).- Product switch to ON-position.
- 3).- Touch one probe of tester to one blade of power cord plug and touch other probe to handle tube, there should be no breakdown.

2.- OPERATING TEST

Run the machine and check the suction at hose intake.

- 1).- There should be no abnormal noise or vibration
- 2).- With the intake open the current shall be no more than 9.0 A.
- 3).- With the intake closed the current shall drop to approx. 5.5 A.

II.-REPLACEMENT PROCEDURES

1.- TO REPLACE THE MOTOR (71)

- 1.1.- Remove the head assembly from the machine.
- 1.2.- Remove the six screws (61) around the head.
- 1.3.- Lift the cover (65), and disconnects the motor and ground lead (87).
- 1.4.- Remove the noise reductor (88), the motor cover (68) the motor gasket (70) and the noise reductor (89).
- 1.5.- Replace the motor (71) making sure the motor gasket, to motor protector is placed into the motor base (72).
- 1.6.- Reconnect and reassemble.

NOTE: Do not attempt to the repair motor send for service.

2.- TO REPLACE THE ONE CORD (83)

- 2.1.- Follow steps 1.1 and 1.2
- 2.2.- Lift cover as far as wiring permits.
- 2.3.- Remove the line cord strain relief (84) using HEYCO pliers and separate the line cord (83).
- 2.4.- Replace the line cord at the same distance from the end as before
- 2.5.- Using the Heyco pliers reinserts the strain relief on the head cover
- 2.6.- Reconnect and reassemble

3.- TO REPLACE THE ON-OFF SWITCH (67)

- 3.1.- Follow steps 2.1 and 2.2
- 3.2.- Press the side tabs on the switch and pull it out of the head cover
- 3.3.- Replace the new switch pressing it on opening until the tabs snap and reconnect the leads.

4.- TO REPLACE THE PLASTIC COVER (55)

- 4.1.- Remove the head assembly from the machine.
- 4.2.- Remove the four screws (54) and lift the plastic cover handle (53) and the noise reductor (56).
- 4.3.- Replace the plastic cover making sure put the noise reductor and the handle.

5.- TO REPLACE THE COVER HANDLE (53)

- 5.1.- Follow steps 4.1 and 4.2.
- 5.2.- Replace the cover handle.

6.- TO REPLACE THE COOLING VENTS (60)

- 6.1.- Remove the two screws (59) on the cooling vents and remove it
- 6.2.- Replace the new vents and screws.

7.- TO REPLACE VENT SEAL (81)

- 7.1.- Follow steps 4.1 and 4.2
- 7.2.- Remove the seal from motor cover (65).
- 7.3.- Place the new seal.

8.- TO REPLACE SPONGE FILTER (90)

- 8.1.- Remove the head.
- 8.2.- Remove the filter (2) from cage (78).
- 8.3.- Remove the sponge filter (90).

9.- TO REPLACE THE SUCTION BASE (5)

- 9.1.- Remove the head assembly from the machine.
- 9.2.- Remove the four screws (20), and the diffuser elbow (23) and the suction coupling (24).
- 9.3.- Replace the new suction base (5) placing the seal base (4) reassemble.

10.- TO REPLACE THE COVER LATCH (ONLY PLASTIC TANK) (3)

- 10.1.- Remove the head assembly from the machine
- 10.2.- Remove the tree screws (48) and remove the cover latch with components 3A, B, C, D, E and F.
- 10.3.- Replace the new cover latch assembly

11.- TO REPLACE THE COVER LATCH ASSEMBLY (ONLY METAL TANK) (3)

- 11.1.- Remove the head assembly from the machine
- 11.2.- Remove the rivet (3-E) and the hook assembly (3).
- 11.3.- Replace the new cover latch with new rivets.

12.- TO REPLACE THE REAR WHEELS (11)

- 12.1.- Remove the screw (8) with the washer (9) and (10)
- 12.2.- Pull out the wheel and replace.

13.- TO REPLACE THE FRONT WHEELS (30)

- 13.1.- Remove the acorn nut (13) flat washer (49) and remove the wheel.
- 13.2.- Replace the new wheel making sure to put the washer (14) and (49).

14.- TO REPLACE THE FRONT BUMPER (15)

- 14.1.- Remove the six screws (16).
- 14.2.- Remove the bumper and replace.

15.- TO REPLACE THE DRAIN ELBOW (40-A) ONLY MODELS AI-1960 AND 1660

- 15.1.- Remove the head assembly from the machine.
- 15.2.- Remove the drain hose (37).
- 15.3.- Remove the Hex nut (43) and the gasket (42).
- 15.4.- Remove the elbow (40-A), and the gasket (41) and the hex nut (40-B).
- 15.5.- Replace the elbow making sure to put the gaskets.

16.- TO REPLACE THE TANK ASSEMBLY (7)

- 16.1.- Remove the head assembly from the machine.
- 16.2.- Remove the two screws (18), the four screws (29), and the washers (28).
- 16.3.- Replace the new tank assembly following the steps 8,9, 10 and 14
- 16.4.- Put the screws and washers.

17.- TO REPLACE THE CHASSIS ASSEMBLY (46)

- 17.1.- Follow the step 16.1 and 16.2.
- 17.2.- Remove the four screws (25), the handle (38), and the label.
- 17.3.- Remove the screws (8) with the washer (9) and (10) and "c" washer (26).
- 17.4.- Remove the six screws (16).
- 17.5.- Replace the new chassis.

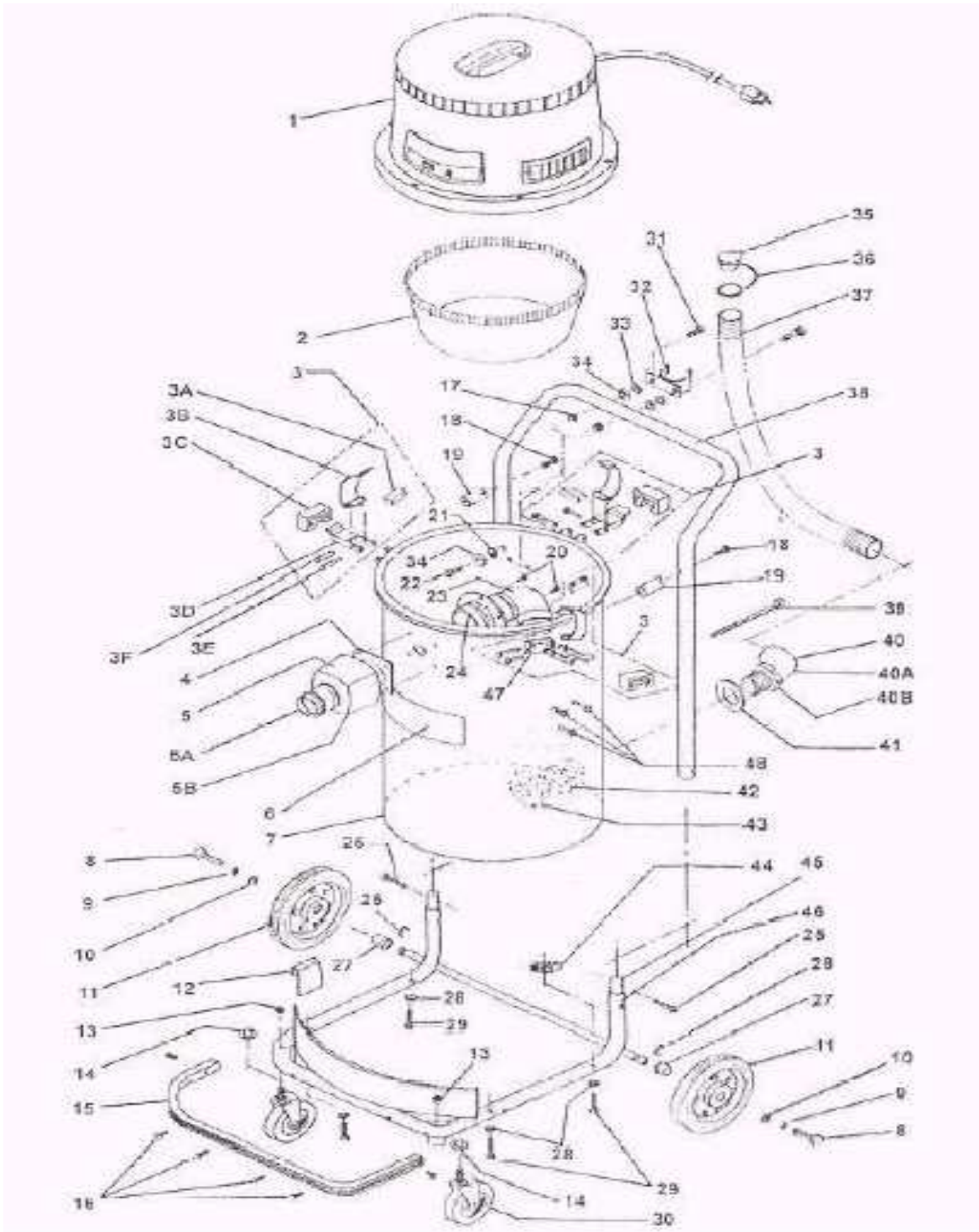
III.- TROUBLE SHOOTING CHART

PROBLEM	POSSIBLE CAUSE	SOLUTION
A) Motor does not run	1.- Not firmly plugged in.	1.- Check attachment plug.
	2.- Bad ON-OFF switch.	2.- Replace switch.
	3.- Line cord open	3.- Replace cord.
	4.- Motor open	4.- Check motor and wiring.
B) Motor runs but cleaner does not run pick-up	1.- Dust filter bag closed.	1.- Clean filter bag.
	2.- Hose or wand closed	2.- Clean obstruction.
	3.- Motor slow	3.- Check carbon brushes.
	4.- Tank full	4.- Empty tank.
	5.- Float valve up.	5.- Check float valve.
	6.- Damaged motor base gasket or head gasket	6.- Check gaskets
C) Motor runs erratically	1.- Worn carbon brushes.	1.- Replace carbon brushes.
	2.- Defective armature.	2.- Replace armature.

WHEN ORDERING ,DO NOT FORGET TO SPECIFY :

- ✓ **PART NUMBER**
- ✓ **DESCRIPTION**
- ✓ **MODEL NUMBER**

NOTE: Drawing numbers are for identification purposes only.

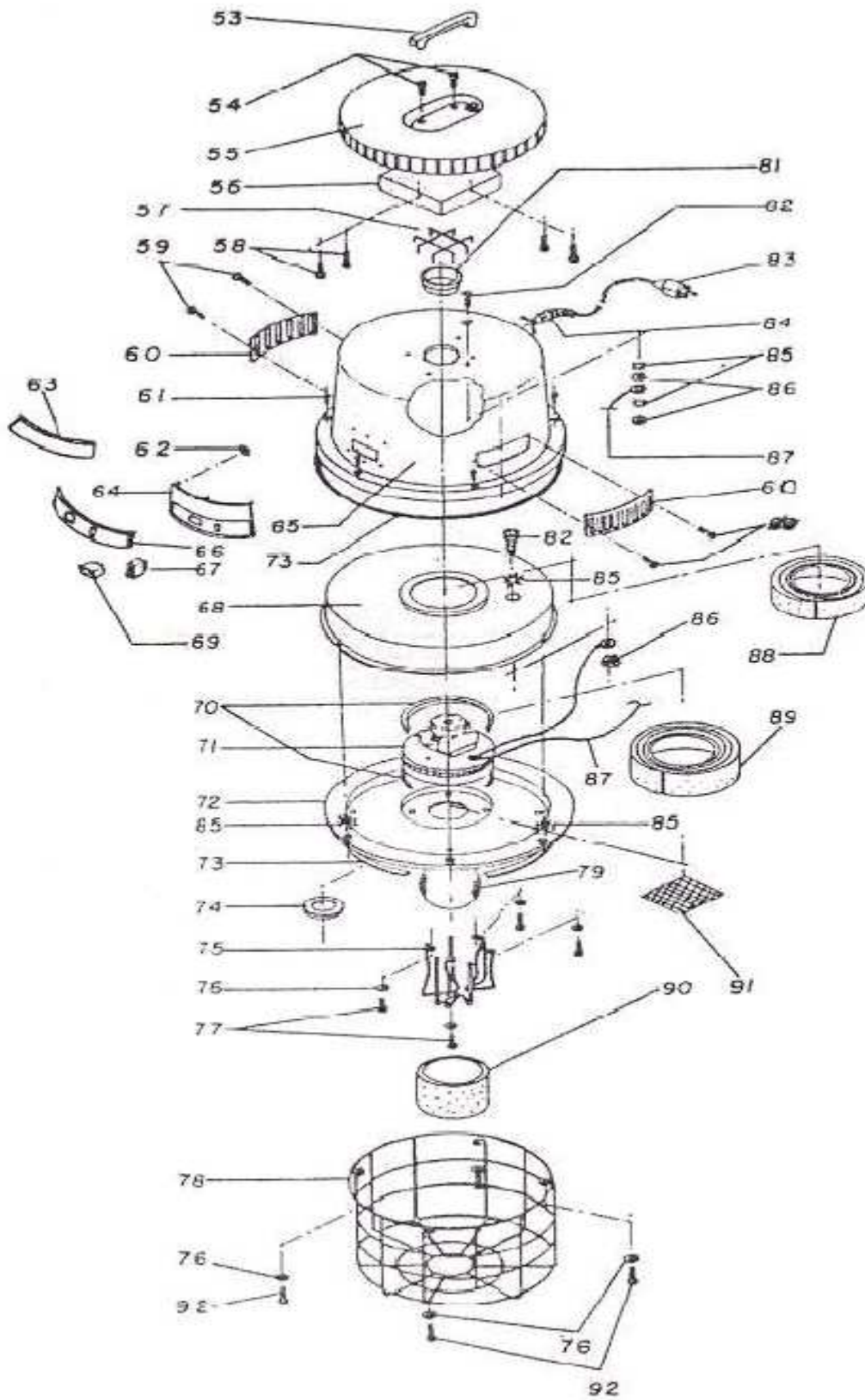


V-VACUUM CLEANER PARTS LIST

No.	PART. No.	DESCRIPTION	AI-1260 P	AI-1660 P	AI - 1960 P
1	46-2310-4	HEAD ASSEMBLY	1	1	1
2	45-0479-1	BAG ASSEMBLY	1	1	1
3	45-0453-6	COVER LATCH ASSEMBLY	3	3	3
3A	12-0682-0	LATCH GROMET	3	3	3
3B	05-3754-8	LATCH HOOK	3	3	3
3C	12-0392-6	LATCH GROMET	3	3	3
3D	05-2241-7	LATCH LEVER	3	3	3
3E	03-0419-6	RIVET 1/8 X 1 1/8	3	3	3
3F	03-0418-8	RIVET 1/8 X 7/8	3	3	3
4	12-0582-2	SUCTION BASE GASKET	1	1	1
5	46-1883-1	SUCTION BASE ASSEMBLY 11/2	1	1	1
5A	05-2749-9	COUPLING TUBE	1	1	1
5B	06-0483-5	SUCTION BASE	1	1	1
6	17-3360-9	TANK LABEL	1	1	1
7	46-2171-0	TANK ASSEMBLY 1960P	1		
7	46-2168-6	TANK ASSEMBLY 1660P		1	
7	46-2167-8	TANK ASSEMBLY 1260P			1
8	01-0873-8	SCREW 1/4 - 20 X 1	2	2	2
9	04-0270-1	STAR WASHER 1/4	2	2	2
10	04-0078-8	FLAT WASHER	2	2	2
11	46-2281-7	REAR WHEEL 10"	2	2	2
12	12-0487-4	CHASSIS BUMPER	1	1	1
13	02-0119-4	ACORN NUT 3/8 - 16	2	2	2
14	04-0486-3	STAR WASHER 3/8	2	2	2
15	12-0503-8	FRONT BUMPER	1	1	1
16	01-0267-3	SCREW No. 4 X 1/2	8	8	8
17	02-0038-6	HEXAGONAL NUT 8-32	2	2	
18	01-1819-0	SCREW# 10-24 X 11/4	2	2	2
19	25-1121-0	UPPER HANDLE SUPPORT	2	2	2
20	01-1375-3	SCREW # 8-32 X 3/4	6	6	
20	01-1376-1	SCREW# 8-32 X 3/8			4
21	04-0430-1	RUBBER WASHER 1/8 X 3/16 X 1/2	4	4	4
22	01-1818-2	SCREW# 10-24 X 3/4	2	2	2
23	13-1830-2	DRAIN ELBOW	1	1	1
24	13-1485-5	COUPLING ELBOW	1	1	1
25	01-1817-4	SCREW# 10-24 X 1/2	4	4	4
26	04-0240-4	RETAINING RING	2	2	2
27	25-1042-8	WHEEL SPACER	2	2	2

No.	PART. No.	DESCRIPTION	AI-1260 P	AI-1660 P	AI - 1960 P
28	04-0026-7	FLAT WASHER .203 X 1/2	4	4	4
29	01-0761-5	SCREW# 10-32 X 11/4"	4	4	4
30	27-0197-7	FRONT WHEEL	2	2	2
31	01-1378-7	SCREW# 8 - 32 X 1/2INOX.	4	4	4
32	13-1548-0	RETAINING HOSE	1	1	
34	04-0068-9	FLAT WASHER .203 X 1/2	4	4	2
35	12-0661-4	DRAIN PLUG	1	1	
36	12-0659-8	RETAINING PLUG	1	1	
37	12-0658-0	DRAIN HOSE	1		
37	12-0674-7	DRAIN HOSES 16 GAL.		1	
38	05-3709-2	HANDLE	1		
38	05-3711-8	CHROME HANDLE 1660		1	
39	13-1824-5	HOSE RETAINING	1	1	
40	46-2303-9	DRAIN ELBOW ASSEMBLY	1	1	
40A	13-1762-7	DRAIN ELBOW	1	1	
40B	13-1773-4	ELBOW BASE	1	1	
41	12-0657-2	ELBOW GASKET	1	1	
42	12-0679-6	ELBOW GASKET	1	1	
43	13-1761-9	P.V.C. HEX. NUT	1	1	
45	25-1022-0	CHASSIS HAN OLE COUPLING	2	2	2
46	23-0556-3	CHASSIS HANDLE ASSEMBLY	1	1	1
47	05-3505-4	HOOK SUPPORT	3	3	3
48	01-0852-2	SCREW # 8-32 X 3/8	9	9	9
49	04-0079-6	FLAT WASHER .390 X 3/4	2	2	2

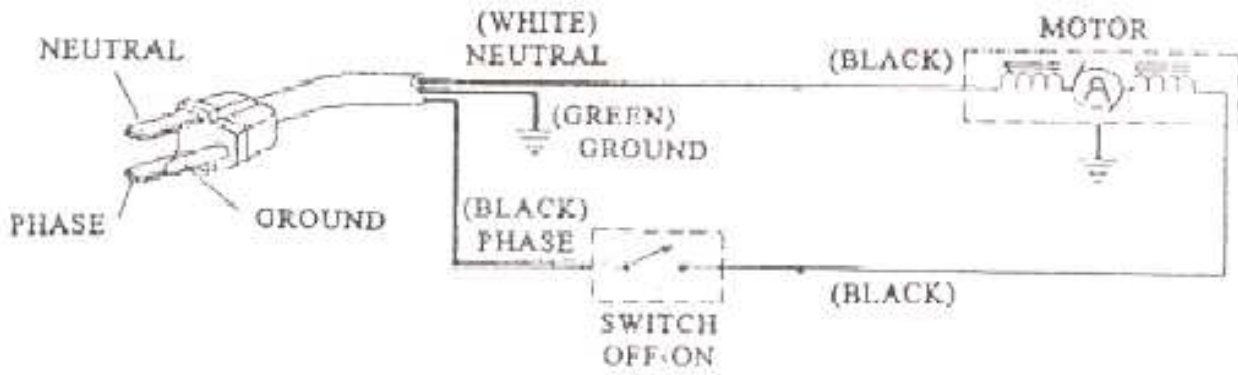
VI.- HEAD ASSEMBLY



VII.- PART LIST AND HEAD ASSEMBLY

No.	PART. No.	DESCRIPTION	AI-1260 P	AI-1660 P	AI - 1960 P
53	13-1676-9	COVER HANDLE	1	1	1
54	01-1659-0	SCREW # 10 X 11/4"	4	4	4
55	13-1675-1	PLASTIC COVER	1	1	1
56	12-0693-7	FOAM FILTER S/UL	1	1	1
57	05-3755-5	CAGE	1	1	1
58	01-0293-9	SCREW# 10 X 3/4	4	4	4
59	01-0558-5	SCREW # 6 X 3/8	4	4	4
60	13-1114-1	COOLING VENTS	2	2	2
61	01-1251-6	SCREW # 8-32 X 3/8	6	6	6
62	02-0147-5	FAST NUT	6	6	6
63	17-3344-3	LABEL	1	1	1
64	13-1687-6	CONTROL PANEL	1	1	1
65	05-3574-0	HEAD COVER	1	1	1
66	17-3285-8	PANEL LABEL	1	1	1
67	11-0138-5	SWITCH	1	1	1
68	05-3579-9	MOTOR COVER	1	1	1
70	12-0011-2	MOTOR GASKET	2	2	2
71	01-1960-4	MOTOR PACK BY-PASS MA-70-B	1	1	1
72	23-0558-9	MOTOR BASE	1	1	1
73	12-0340-5	COVER BASE GASKET	1.35	1.35	1.35
74	12-0680-4	FLOAT GASKET	1	1	1
75	23-0559-7	CAGE FLOAT	1	1	1
76	04-0068-9	FLAT WASHER	8	8	8
77	01-0295-4	SCREW # 10 X 3/8	4	4	4
78	23-0580-3	BAG CAGE FILTER	1	1	1
79	82-5738-8	FLOAT	1	1	1
81	12-0323-1	COOLING AIR GASKET	1	1	1
82	01-1249-0	SCREW #8-32 X 3/8	3	3	3
83	28-0641-2	L1NE CORD ASSEMBLY	1	1	1
84	12-0605-1	HEYCO GROMMET	1	1	1
85	04-0276-8	STAR WASHER	7	7	7
86	02-0007-1	HEXAGONAL NUT 8-32	4	4	4
87	28-0488-8	GROUND MOTOR LEAD	1	1	1
88	12-0654-9	NOISE REDUCTOR	1	1	1
89	12-0655-6	NOISE REDUCTOR	1	1	1
90	12-0490-8	FOAM FILTER	1	1	1
91	05-3743-1	PROTECTOR VENT	1	1	1
92	01-0292-1	SCREW# 10 X 1/2	4	4	4

VIII.- WIRING DIAGRAM



IX.- ELECTRICAL RATING

MODEL	CAPACITY	V~	A	Hz
AI-1260P	12 Gal.	127	9	60
AI-1660P	16 Gal.	127	9	60
AI-1960P	19 Gal.	127	9	60



FACTORY AUTHORIZED SERVICE

Thorne Electric Company
610 Lanark Suite 205
San Antonio TX ,78218
Tel (210) 590-1226
Fax (210) 590-1258
1-800-548-5741

FACTORY

Koblenz Electrica, S.A. de C.V.
Av. . Ciencia No 28 Cuautitlán Izcalli
Edo. de México, C.P. 54730
Tel : 5864-0300
Web site : <http://www.koblenz.electric.com>

KOBLENZ ELÉCTRICA S.A. DE C.V.
E-mail: servicio@koblenz-electric.com

LP-APVI500-200509

SERVICE