



**SERVICE MANUAL
PARTS LIST**

UPRIGHT VACUUM CLEANER

MODELS:

U-800

SERVICE

KOBLENZ ELECTRICA S.A. DE C.V.
E-mail: thorne_scsm@koblenz-electric.com

OCTOBER-08
LP-UV-200810

INDEX

	PAGE
I. - REPLACEMENT PROCEDURES	3
II. - TROUBLE SHOOTING CHART	4
III. - ELECTRICAL CHARACTERISTICS	4
IV. - NOZZLE GROUP PARTS	5
V. - NOZZLE GROUP PARTS LIST	6
VI. - BODY GROUP PARTS	7
VII. - BODY GROUP PARTS LIST	8
VIII. - HANDLE AND TOOLS GROUP PARTS	9
IX. - HANDLE AND TOOLS GROUP PARTS LIST	10
X. - MOTOR AND AGITATOR GROUP PARTS	11
XI. - MOTOR AND AGITATOR GROUP PARTS LIST	12
XII. - ELECTRIC DIAGRAM	13

I. - REPLACEMENT PROCEDURES

1. - TO REPLACE DE BELT (22), FIG 1.

- 1.1.- Press handle release pedal and put the upright in a horizontal position. Remove the bottom plate (lock) by unscrewing the bottom plate and pull it out .
- 1.2.-The rear belt cover (black) (18),fig1 and remove the agitator assembly (1) , fig 3 .
- 1.3.-Change the belt (22) fig. 1 and reassemble.

2.- TO THE CHANGE THE COMPLETE FOOT PEDAL (8),FIG 1

- 2.1.- Follow the steps indicated on point 1.1.
- 2.2.- Remove the set of screws (21) fig 1. to remove the complete foot pedal (8) fig1.
- 2.3.-Change and reassemble .

3.- TO CHANGE THE NOZZLE INLET (BLACK) 25 , FIG. 1

- 3.1.-. Follow the steps indicated on point 1.1
- 3.2.- Remove the set of screws and hose inlet fitting (red) in order to remove the nozzle housing (black) (25),fig 1.
- 3.3.- Replace and reassemble.

4.- TO CHANGE THE AGITATOR BRUSH (9),FIG 3.

- 4.1.- Follow the steps indicated on point 1.1 to 1.2.
- 4.2.- Remove the bottom plate assembly (lock) (7) ,fig 4.
- 4.3.- Disassemble numbers (3),(4),(5),(6),(7),(8),(10) and (12) fig 3,in order to remove the agitator brush (9), fig 3.
- 4.4.-Replace the agitator brush and reassemble.

5.- TO REPLACE AGITATOR BEARINGS (7) ,FIG 3

- 5.1.- Follow the steps indicated on point 1.1 , 1.2 to 4.2.
- 5.2.- Disassemble numbers (3),(4),(5),(6),(7), and (12) fig 3, to remove the agitator bearings (7),fig 3.
- 5.3.- Replace with new bearings and then reassemble .

6.- TO CHANGE LAMB MOTOR (14), FIG. 3.

- 6.1.- Follow the steps indicated on point 1.1 to 1.2.
- 6.2.- Remove the belt (22),fig 1.
- 6.3.- Remove the screws (14) in order to remove the motor cover (22),fig. 2;
- 6.4.- Disconnect the cord(23),fig.3 of motor cord (black) (28),fig3.
- 6.5.- Remove the screws of motor cover and remove the parts (16),(17),(18),(19),(20),(21) and (22),fig3.
- 6.6.- Replace the motor damaged and then reassemble.

7.- TO REPLACE THE WHEELS (29) ,FIG 2.

- 7.1.- Press handle release pedal and put upright in a horizontal position.
- 7.2.- Remover rear wheel (black) (27),fig.2,and the E-clip (28),fig2
- 7.3.- Remove the washer (26),fig2.and damaged rear wheel (black),fig2.
- 7.4.- Replace the rear wheel and reassemble.

8.- TO REPLACE SWITCH (MR-R30) (30),FIG 2

- 8.1.- Remove the screws (14) ,fig2 from the switch housing cover(12),fig2.
- 8.2.- Remove the switch housing cover(12),fig2.by disconnecting the switch(30),fig2 . from the power cord (6),fig4
- 8.3.- Remove the damaged switch replace and replace.
- 8.4.- Reassemble.

9.- TO CHANGE THE POWER CORD (6),FIG.4

- 9.1.- Follow the steps indicated on point .8.1 to 8.2.
- 9.2.- Remove the power cord(6),fig 4.
- 9.3.- Replace with a new power cord and reassemble.

10.- TO CHANGE THE STRETCH HOSE (BLACK) (34),FIG.2.

- 10.1.-Remove the dust cover (18),fig2.
- 10.2.-Remove the screws (14),fig2 and replace the stretch hose (34),fig2.
- 10.3.-Reassemble.

11.-TO CHANGE THE SECONDARY FILTER (11),FIG2.

11.1.-Remove motor cover (22)

11.2.-Remove the secondary filter , Replace the filter .

11.3.-Reassemble.

12.-TO CHANGE THERMAL SWITCH (24),FIG3.

12.1.- Follow steps indicated on point 6.1 to 6.5

12.2.-Remove screw (26),fig3, and replace thermal switch(24),fig3.

12.3.-Reassemble.

II.- TROUBLE SHOOTING CHART

PROBLEM	POSSIBLE CAUSE	Solution
A) Motor does not run	1.- Thermal switch activated	1.- Press reset button.
	2.- Bad ON-OFF switch.	2.- Replace switch.
	3.- Line cord open.	3.- Replace cord.
	4.- Motor open.	4.- Check motor and wiring.
	5.-There is no voltage line.	6.- Check voltage line.
B) Agitator stuck and no tour	1.- Blockage by material.	1.- Remove obstruction.
	2.- Trapping belt.	2.- Replace belt.
	3.- Motor damaged.	3.-Replace motor.
	4.-Thermal switch activated.	4.-Press reset button .
C) low-power	1.- Suction control dial	1.- Check position of suction control dial
	2.- Motor damaged	2.- Replace motor
	3.- Bad electrical connection.	3.- Check wiring.
	4.- Filters obstructed	4.- Change of filters
D) Agitator vibrates	1.- Ball bearing worn out.	1.- Replace bearing.
	2.- wheel damaged	2.- Replace wheel

III.- ELECTRICAL CHARACTERISTICS

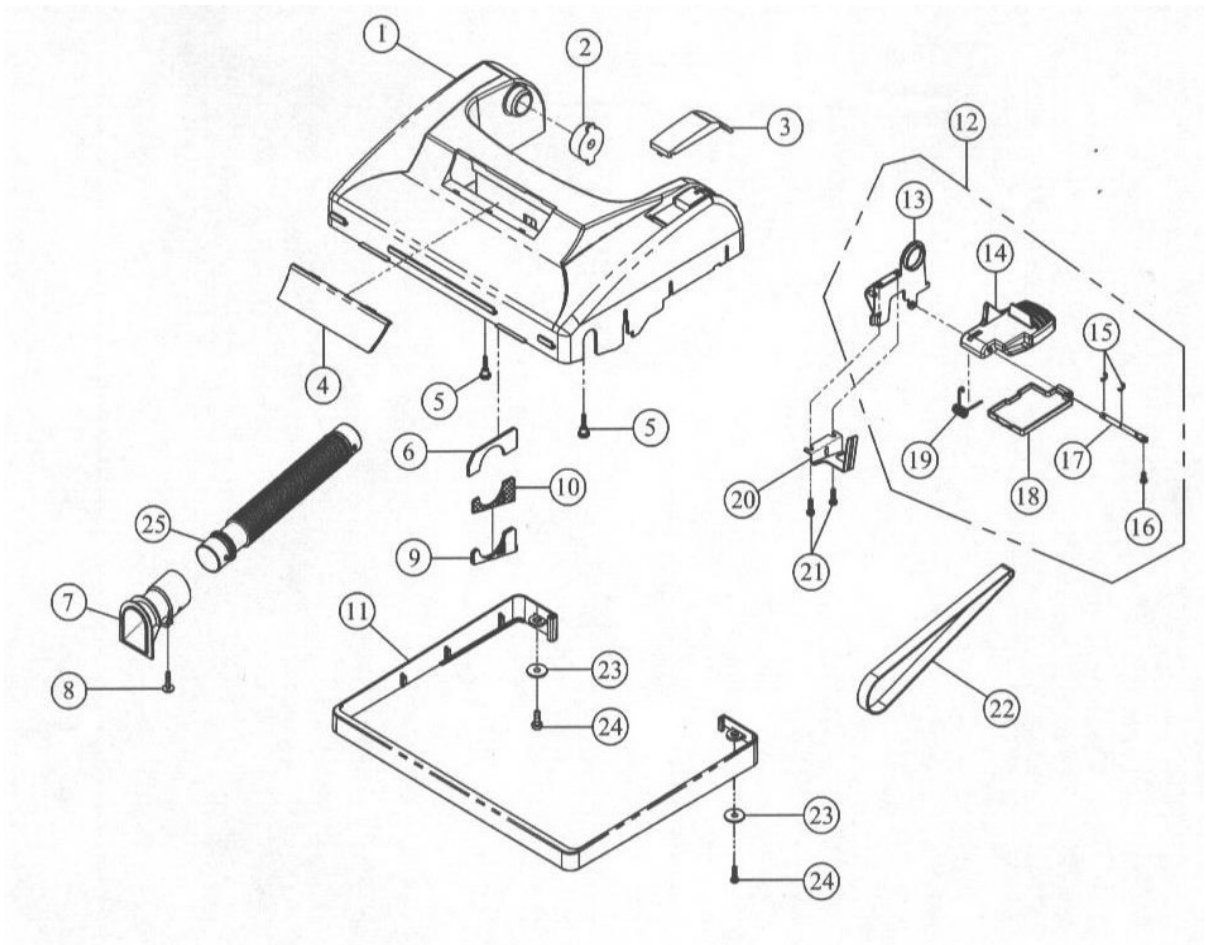
VOLTS	AMPERES	Hz
120 V~	10 A	60

WHEN ORDERING ,DO NOT FORGET TO SPECIFY :

- ✓ **PART NUMBER**
- ✓ **DESCRIPTION**
- ✓ **MODEL NUMBER**

NOTE: Drawing numbers are for identification purposes only.

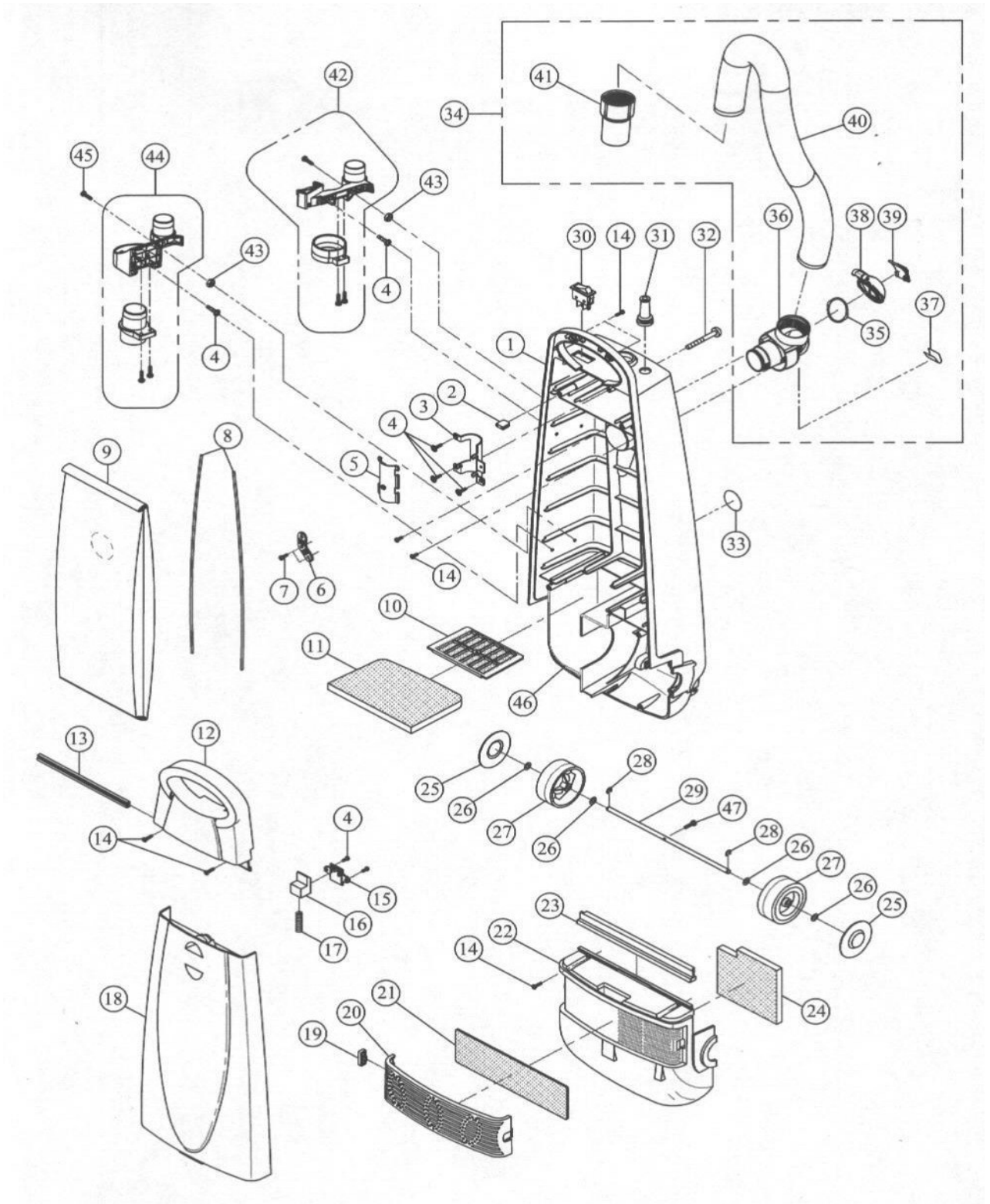
IV.- NOZZLE GROUP PARTS (FIG.1)



V.- NOZZLE GROUP LIST PARTS (FIG.1)

No.	Part No.	Part No.	Part Name and Description	QTY
1		570002527	Nozzle housing ass. (gray 423C)	1
2		70005430	Plastic bushing (black)	1
3		570011327	Carpet/Floor pedal cover (gray 423C)	1
4		570008327	Window(gray 423C)	1
5		M400691	Bottom plate lock screw (M4)	2
6	49-5602-06-2	500040300	Nozzle housing felt packing	1
7		500014304	Hose inlet fitting (red)	1
8		M400391	Set screw (M4*16)	1
9	49-5602-26-0	70005539	Vented support fitting	1
10		700262300	Vented support felt packing	1
11	49-5602-23-7	70000930	Furniture guard (black)	1
12	49-5602-28-6	70013240	Foot pedal complete (B) (black)	1
13		700134395	Pedal frame (B)	1
14		70013230	Foot pedal (black)	1
15		E494	E-clip (ETW4)	2
16		M401091	Set screw (M4*12)	1
17		700136395	Foot pedal shaft	1
18		70013330	Rear belt cover (black)	1
19		70013539	Foot pedal spring	1
20	49-5602-55-9	72001739	Belt guard	1
21		M401591	Set screw (M4*18.5)	2
22	49-5602-48-4	700302300	Belt	1
23		WA00891	Washer (4.2*12*1)	2
24		M400191	Set screw (M4*15)	2
25	49-5602-58-3	73001930	Nozzle hose (black)	1

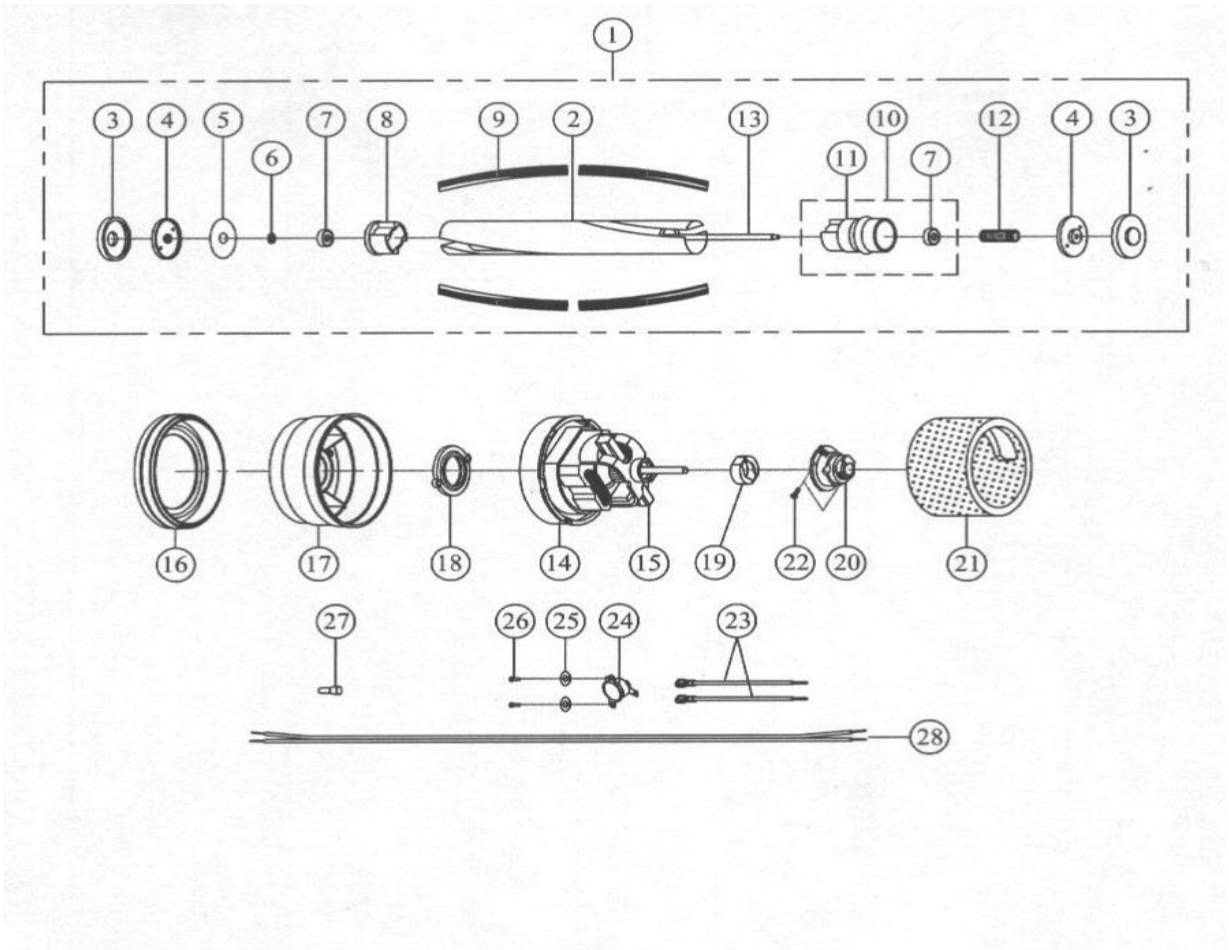
VI.- BODY GROUP PARTS (FIG.2)



VII.- BODY GROUP LIST PARTS (FIG.2)

No.	Part No.	Part No.	Part Name and Description	QTY
1	49-5602-07-0	580001328	Dust compartment (graphite 426C)	1
2		720013301	Vented support rubber	1
3	49-5602-26-0	700023391	Handle fitting (rear)	1
4		M400191	Set screw (M4*15)	7
5		700022391	Handle fitting (front)	1
6	49-5602-25-2	700019301	Cord holder (black)	1
7		M401091	Set screw (M4*12)	2
8		700021305	Dust compartment side seals	2
9	45-0769-5	700303301	Paper Bag (Package with 3 bags)	1
10		700017300	Filter supporter screen	1
11	49-5602-61-7	720012300C	Secondary filter (B)	1
12	49-5602-03-9	500004328	Switch housing cover (graphite 426C)	1
13		700102305	Dust cover seal	1
14		M400291	Set screw (M4*18.5)	10
15		700083301	Release button cover (black)	1
16		700081301	Cover release button (black)	1
17		700082391	Cover release button spring	1
18	49-5602-01-3	500003327	Dust cover (gray 423C)	1
19	49-5602-27-8	700094301	Post cover knob (black)	1
20	49-5602-05-4	500006328	Post cover (graphite 426C)	1
21		570020300	Electrostatic filter	1
22	49-5602-04-7	500005328	Motor cover (graphite 426C)	1
23		700095305	Motor cover seal	1
24		700091300	Exhaust filter	1
25		700272309	Rear wheel hubcap	2
26		WA00791	Washer (6.2*12*0.7)	4
27	49-5602-29-4	700142301	Rear wheel (black)	2
28		E594	E-clip (ETW-5)	2
29		700143395	Rear wheel shaft (A)	1
30	49-5602-51-8	700958300	Switch (MR-R30) black	1
31		700288301	Large rubber boot (black)	1
32		M500191	Handle screw (M5*45)	1
33		700801300	Warning label	1
34	49-5602-18-7	570067401	Long stretch hose complete (black)	1
35		700298303	Suction inlet cover seal	1
36		700183301	Attachment connecting device (black)	1
37	49-5602-40-1	700186300	Suction inlet lid spring	1
38	49-5602-38-5	700184301	Suction inlet lid (black)	1
39	49-5602-39-3	700185301	Suction control dial (black)	1
40		570018355	Stretch hose (50cm)	1
41		700187301	Hose cuff (black)	1
42	49-5602-19-5	570070401	Tool holder ass. (black)	1
43		M402191	Nut (M4)	2
44		570073401	Wand retainer ass. (black)	1
45		M403091	Set screw (M4*12)	2
46		700304400	Motor compartment seals	1
47		M300191	Set screw (M3*22)	1

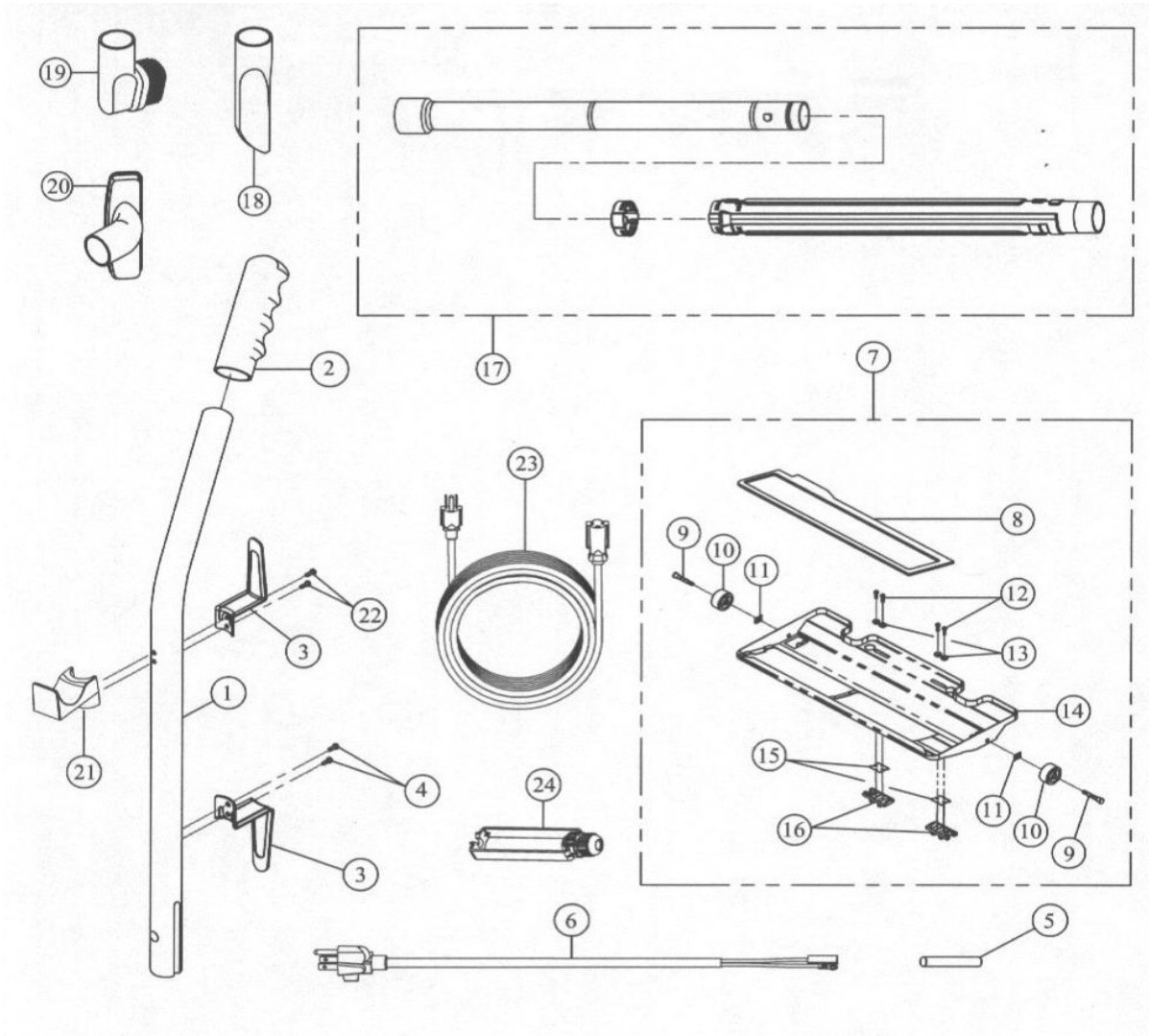
VIII.-MOTOR AND AGITATOR GROUP PARTS (FIG.3)



IX.-MOTOR AND AGITATOR GROUP LIST PARTS (FIG.3)

No.	Part No.	Part No.	Part Name and Description	QTY
1	49-5602-33-6	700162400	Agitator assembly (metal)	1
2		700162392	Agitator core (metal)	1
3		700227301	Rubber end cover (black)	2
4	49-5602-35-1	700172300	End cap	2
5		700174300	Agitator felt washer (white)	1
6		WA00991	Washer (6.0*12*0.5)	1
7	49-5602-34-4	700171300	Agitator bearing (626DD)	2
8		700170300	Agitator bearing holder	1
9	49-5602-36-9	700175500	Agitator brush	4
10	49-5602-56-7	720021400	Agitator pulley complete	1
11		720022301	Agitator pulley	1
12		720023391	Agitator pulley bushing	1
13		700285300	Agitator shaft	1
14	49-5602-52-6	700988300	Lamb motor (119560-00) 1000W	1
15	49-5602-53-4	700992300	Lamb Carbon brush (for singer fan)	2
16		700233301	Motor mount (rear)	1
17	49-5602-49-2	700311301	Motor support housing (black)	1
18		500020301	Suction inlet packing (black)	1
19	49-5602-46-8	700232301	Motor mount (front)	1
20	49-5602-47-6	700234301	Motor pivot sleeve (black)	1
21		700231300	Noise suppressor	1
22		M400191	Set screw (M4*15)	2
23		700966300	Cord (16AWG) (black)	2
24	49-5602-50-0	700944300	Thermal switch (US-603 100□)	1
25		WA00194	Washer (4.2*14*1)	2
26		M301695	Set screw (M3*12)	2
27		700939300	Wire connector (HW-C4)	4
28		700943300	Motor cord (SPT-2 16AWG) black	1

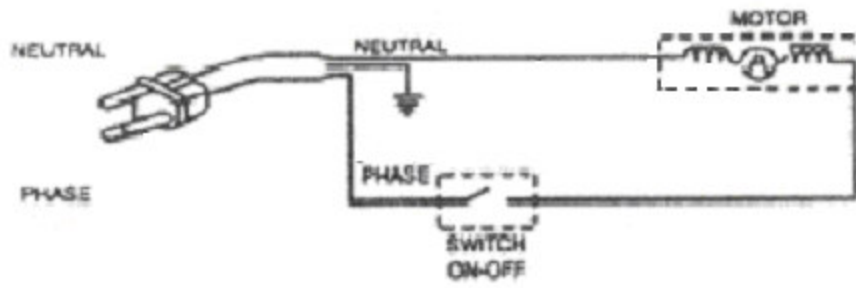
X-HANDLE AND TOOLS GROUP PARTS



XI.- HANDLE AND TOOLS GROUP LIST PARTS

No.	Part No.	Part No.	Part Name and Description	QTY
1		570074392	Handle tube (C)	1
2		570062301	Soft grip (black)	1
3		570054392	Metal cord hook	2
4		M400591	Set screw (M4*25)	2
5		700925300	Cord protection tube (φ9.0)	1
6		570991323	Power cord (SJT 16AWG)-yellow45CM	1
7	49-5602-59-1	760011592	Bottomplate assembly (lock)	1
8		700308500	Packing grip	1
9	49-5602-32-8	700154392	Bottomplate wheel pin	2
10	49-5602-31-0	700153301	Bottomplate wheel (black)	2
11	49-5602-62-5	P493	Push-on Nut (PSN-4)	2
12		M300295	Set screw (M3*10)	4
13		700155391	Bottomplate latch washer	4
14		700151392	Bottomplate (lock)	1
15		700157300	Bottomplate latch spring	2
16		700156301	Bottomplate latch (black)	2
17	49-5602-57-5	730018401	2-piece telescopic wand (black)	1
18	49-5602-43-5	700204301	Crevice tool (black)	1
19	49-5602-42-7	700201501	Dusting brush (black)	1
20	49-5602-44-3	700205301	Upholstery tool (black)	1
21		570074301	Hose rack (black)	1
22		M402795	Set screw (M4*37)	2
23	49-5602-21-1	570990323	Power cord (50ft SJT 16AWG)yellowtwo terminal	1
24		570079401	Power cord holder (black)	1

XII.- ELECTRIC DIAGRAM





FACTORY AUTHORIZED SERVICE
Thorne Electric Company
610 Lanark Suite 205
San Antonio TX, 78218
Tel (210) 590-1226
Fax (210)590-1258
1-800-548-5741

FACTORY
KOBLENZ ELECTRICA S.A. DE C.V.
AV. CIENCIA NO.26
CUAUTITLAN IZCALLI
ESTADO DE MEXICO 54730

Web site : <http://www.koblenz..com.mx>

KOBLENZ ELECTRICA S.A. DE C.V.
E-mail: servicio@koblenz-electric.com