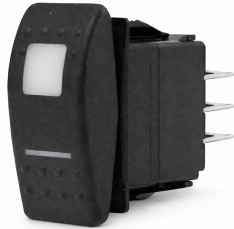


>



Model Number: 20260408

Brinkley RV 10-Pack Drain Dump Valve DPDT 7-Terminal ON-OFF-ON Momentary Illuminated Rocker Reversing Switch 20260408

Manufacturer: Steambrite MFG

10-Pack Brinkley RV Drain Dump Valve Switch & DPDT 7 Terminal | ON/OFF/ON Momentary | Illuminated Reversing Rocker 20260408  
2 month lead time. All sales final. Orders cannot be canceled.  
â€¦ Key Features (Above-the-Fold Bullet Section)

Direct Replacement for Brinkley RV Dump Valve Switches  
DPDT Reversing Polarity Design (Open / Close Valve Control)  
7-Terminal Configuration for precise wiring compatibility  
Momentary ON/OFF/ON Action (Spring return to center)  
Built-in Illumination Indicator (visual valve position feedback)  
Heavy-Duty Rocker Construction & Designed for RV environments  
Water-Resistant Face for outdoor control panels  
Ideal for Black & Gray Tank Valve Systems

#### ðŸ“° What This Switch Does

This DPDT reversing rocker switch is used to control electric RV dump valves, allowing you to open and close black or gray water tanks with a single switch. Unlike standard on/off switches, this unit:

- Sends power in one direction to OPEN
- Reverses polarity to CLOSE the valve
- Returns to center OFF position automatically

This is critical for powered valve systems commonly found in modern RVs like Brinkley units, where proper polarity control is required for motorized valves.

#### âš™• Technical Specifications

- Switch Type: DPDT (Double Pole Double Throw)
- Function: ON / OFF / ON (Momentary)
- Terminals: 7 Pin Configuration
- Operation: Reversing polarity switch
- Illumination: Yes (Indicator light built-in)
- Mount Type: Panel mount rocker
- Application Voltage: (Add exact voltage if known & important for conversions)

#### ðŸ”œ Compatibility

- Brinkley RV Dump Valve Control Panels
- Electric Black Tank Valve Systems

>

Electric Gray Tank Valve Systems  
Other RV / Marine / Trailer reversing motor applications

## Why This Switch Matters

RV dump valve systems rely on correct polarity switching to prevent:

- Valve motor damage
- Incomplete opening/closing
- Electrical failures

Using the wrong switch (like a simple ON/OFF) can result in one-direction operation only.

1/4" wide terminal connections.

- Water resistance face
- Illuminated indicator
- Heavy-duty rocker

## FAQ

Q: Is this a latching switch?

A: No, this is a momentary switch (spring return to center OFF).

Q: Can I use this for other applications?

A: Yes, any reversing motor application (actuators, valves, winches).

Q: Does this replace my Brinkley factory switch?

A: Yes, if your switch is a 7-terminal DPDT momentary reversing type.

What your RV dump valve switch is

For an RV electric dump valve (gate valve with actuator), your switch is:

DPDT (ON)-OFF-(ON) momentary, illuminated, reversing rocker

Press (and hold 5 seconds) top side & rarr; opens valve (light stays on)

Press (and hold 5 seconds) bottom side & rarr; closes valve (light go off)

Release & rarr; springs back to OFF

7 pins = DPDT reversing + light

"E-505159" is a UL certification number  
standard panel cutout (~1.45" x 0.83")  
12V DC lamp light up on open

>

Correct function (momentary ON-OFF-ON)

7-pin illuminated

Designed for motor/actuator reversing

DPDT (double pole)

(ON)-OFF-(ON) momentary

Reversing polarity type  $\hat{a} \hat{s} \hat{i} \bullet$  (this is key)

7 terminals (with light)

20A+ rating

Please turn off solar panels, turn off battery switch, and un-plug your shore cord during service!

---

*Availability: This product was added to our catalog on Wednesday 08 April, 2026*