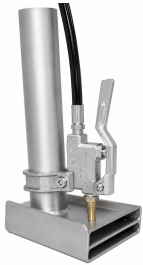


>



Model Number: U1520CA

PMF U1520CA Low Profile Upholstery Tool Closed Spray (Aluminum Valve) High Pressure/ Temp  
Hose 1.5Inch Pipe Stainless Steel

Manufacturer: Production Metal Forming

PMF U1520CA Low Profile Closed Spray Upholstery Tool  
Aluminum Valve & Stainless Steel 1.5" Pipe & High Pressure / High  
Temperature Hose

Part Number: U1520CA

The PMF U1520C is a low-profile closed-spray upholstery and detail cleaning tool designed for use with low-pressure, non-heated portable carpet extractors. The closed-spray head helps contain overspray, hold heat at the fabric surface longer, and reduce splash-back while cleaning upholstery, auto interiors, cushions, mattresses, fabric panels, and tight detail areas.

This model includes a 400 PSI rated aluminum valve, stainless steel 1.5 inch pipe handle. Because the hose is the limiting component, this tool should be used with machines under 400 PSI

#### Important Use Limitation

Use only with non-heated and heated extractors rated under 400 PSI or less. Hot tap water is OK. Use with electric water-heater boosting machines, truckmounts, high-pressure pumps, or any heated extractor that can exceed the hose temperature/pressure rating.

#### Key Features

- Low-profile upholstery tool reaches tighter areas than standard hand tools
- Closed spray design helps reduce overspray and splash-back
- Helps maintain cleaning heat better at the fabric surface
- 4 inch wide cleaning head
- 9 inch x 1.5 inch stainless steel pipe handle
- 400 PSI rated aluminum trigger valve
- 12 inch high-pressure / high-temperature solution hose whip
- Made by PMF / Production Metal Forming
- Made in the USA

#### Best Applications

- Upholstery cleaning
- Auto interior detail cleaning
- Fabric chairs and office panels
- Mattresses and cushions
- RV and aircraft fabric cleaning
- Tight detail areas where a full-size wand will not fit

#### Compatibility Guide

>

Machine Type  
Use With U1520CA?  
Notes

Cold water / hot tap water portable extractor under 400 PSI  
Yes  
Recommended use.

Heated portable extractor with electric water heater  
Yes  
Heat boosting can exceed hose limits.

500 PSI extractor  
No  
Use a high-pressure brass-valve version instead.

Truckmount  
No  
Too much pressure and temperature for this hose setup.

#### Quick Disconnects Not Included

Quick disconnect fittings are not included. Add the correct 1/4 inch brass male and/or female quick disconnect fittings to your cart if needed.

#### Why Choose a Closed Spray Upholstery Tool?

Closed spray upholstery tools are preferred when you want better spray control, less misting, and cleaner operation around delicate fabrics, car interiors, and finished surfaces. Compared with open-spray detail tools, the closed-spray design helps keep more solution under the tool instead of spraying outward.

#### Recommended Upgrade Options

- For high-pressure or heated extractor use, choose a brass valve / high-pressure hose version.
- For delicate upholstery agitation, add a horse hair upholstery brush.
- For best results, pre-vacuum, pre-spray lightly, agitate gently, and extract with controlled dry passes.

#### SEO FAQ

Can I use the PMF U1520C with a heated extractor?

No. This version uses a low-pressure / low-temperature hose. Use it with non-heated extractors under 120 PSI and hot tap water only.

Is the aluminum valve rated for 400 PSI?

Yes, the aluminum valve is rated up to 400 PSI, The complete tool assembly should be used under 400 PSI.

>

What is the difference between closed spray and open spray?

Closed spray contains the spray inside the tool head for better control and less overspray. Open spray tools allow the spray pattern to be more exposed and are usually better for aggressive rinsing where overspray is less of a concern.

Are quick disconnects included?

No. Quick disconnects are sold separately so the customer can match the tool to their machine and hose setup.

What size is the cleaning head?

The U1520CA has a 4 inch wide head with a 1.5 inch stainless steel pipe handle.

Production Metal Forming Inc. is the largest manufacturer of carpet wands, upholstery tools, valves and other accessories for carpet and upholstery cleaning industry. We created the patented Hide-A-Hose and the patented Internal Spray Detailer. We also make proprietary items for OEM manufacturers of the industry. PMF's reputation is built on first-rate customer service and quality products "Made in the USA."

Low Profile Upholstery Tool Closed Spray (Aluminum Valve)

U1520CA-400psi, alum. valve

Ergonomic design also allows access to tighter areas

Closed spray contains spray and maintains heat better

4 inch wide head, 9" X 1.5" Pipe handle

400 psi rated Aluminum valve

12 High temp solution hose

Please use this machine with non heated extractors. OK to use hot tap water. Use with machine rated under 120 psi.

Note: Quick disconnects are not included with tool. Please add connectors to your shopping cart...

Foster: 1/4in Male Brass Quick Disconnect QD

Foster: 1/4in Female Brass Quick Disconnect QD

Foster: 1/4in Male/Female Set Brass Quick Disconnect QD

PMF has been in business for 43 years now and growing. We are a family owned business with many long time employees who are considered family to us. Our employees craft each tool expertly and each one is made with great care and attention to detail.

YOU... our customers are the most important thing to us and our customer service will go above and beyond the call of duty to please you. You will always talk to a human and NEVER be dumped into one of those irritating voicemail systems.

>

If there is something that you need and don't see it in the catalog.... Just ask one of helpful sales people and we just might have it!!! Thank you for being the greatest customers in the world, we look forward to providing you with the highest quality items for many years to come.

Thanks from all us at PMF

Optional:

Clean Storm  
AB08

Horse Hair Brush with Comfort Grip Handle For Upholstery Cleaning

Image is a digital rendering for illustration purposes only. Actual product may differ in appearance, fittings, hose configuration, valve shape, finish, and component details. The V1245 aluminum valve shown is not an exact representation of the valve supplied.

---

*Availability: This product was added to our catalog on Friday 29 May, 2026*