

# Advolution 2710 Rider Burnisher How To

ATTENTION! Do not use the machine before you have read and understood the Instructions for User Manual

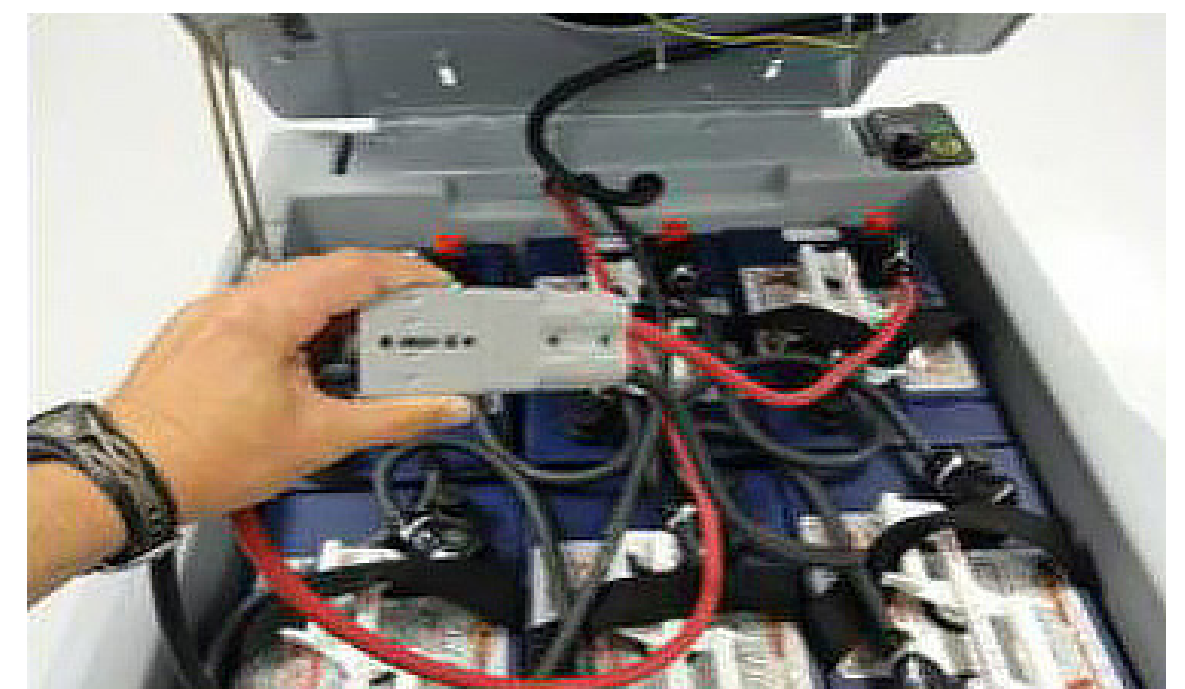
## Prepare for use



1 Before burnishing: Pre-sweep or scrub floor area to prevent scratching



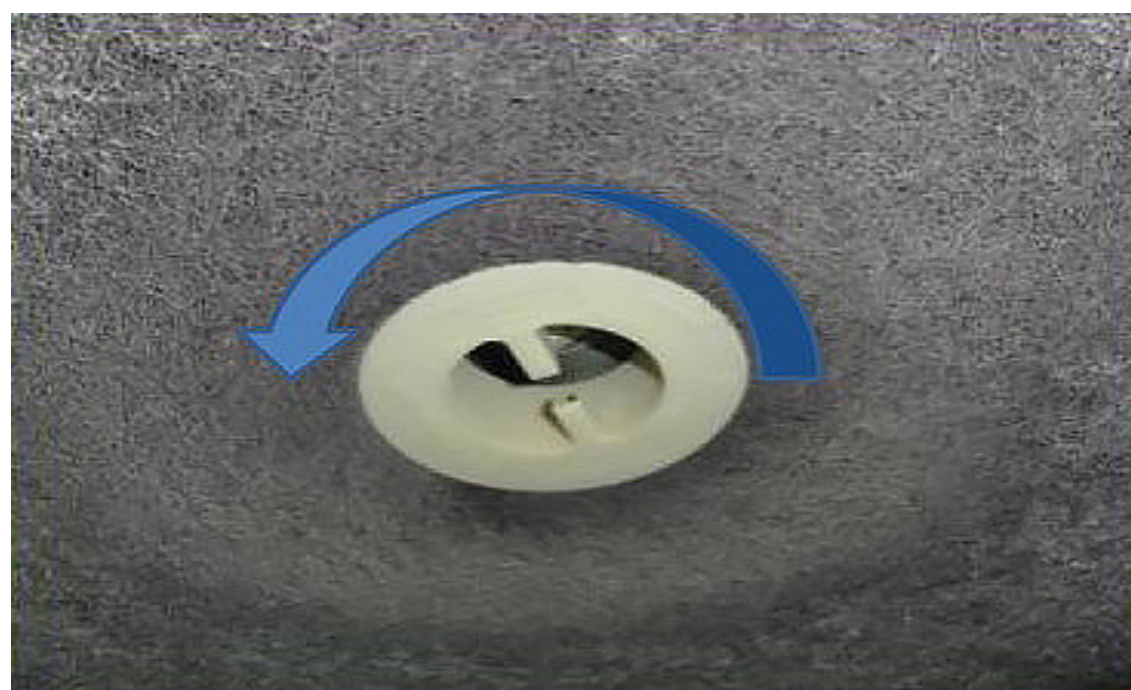
2 Onboard charger: Disconnect battery Store cord inside machine frame



3 If equipped with shelf charger, disconnect then connect machine to batteries



4 Lift and lock deck to inspect burnishing pad for wear



5 Turn pad retainer counter clockwise to remove the pad



6 Install new pad and center on outside diameter. Tighten pad retainer clockwise



7 Verify dust collection bag is installed



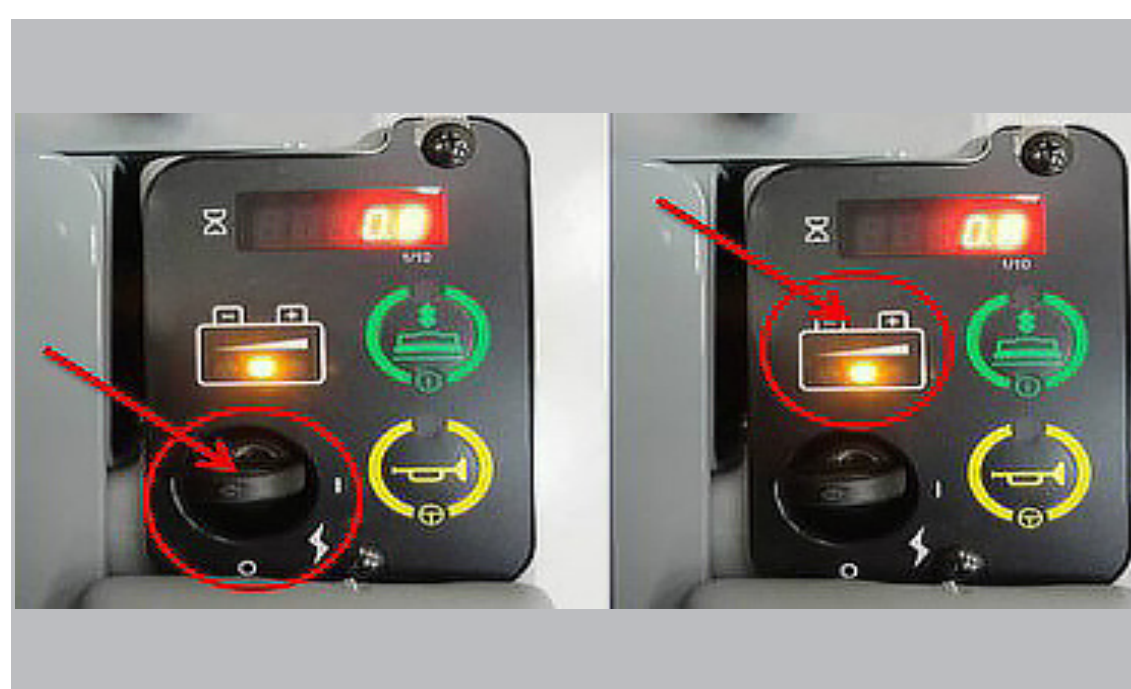
8 Store additional dust collection bags here



9 Adjust steering wheel – tilt to comfort



10 Adjust seat if needed



11 Turn on machine. Verify battery power



12 Use motion control pedal for forward and reverse. Transport machine to work area

# Advolution 2710 Rider Burnisher How To

ATTENTION! Do not use the machine before you have read and understood the Instructions for User Manual

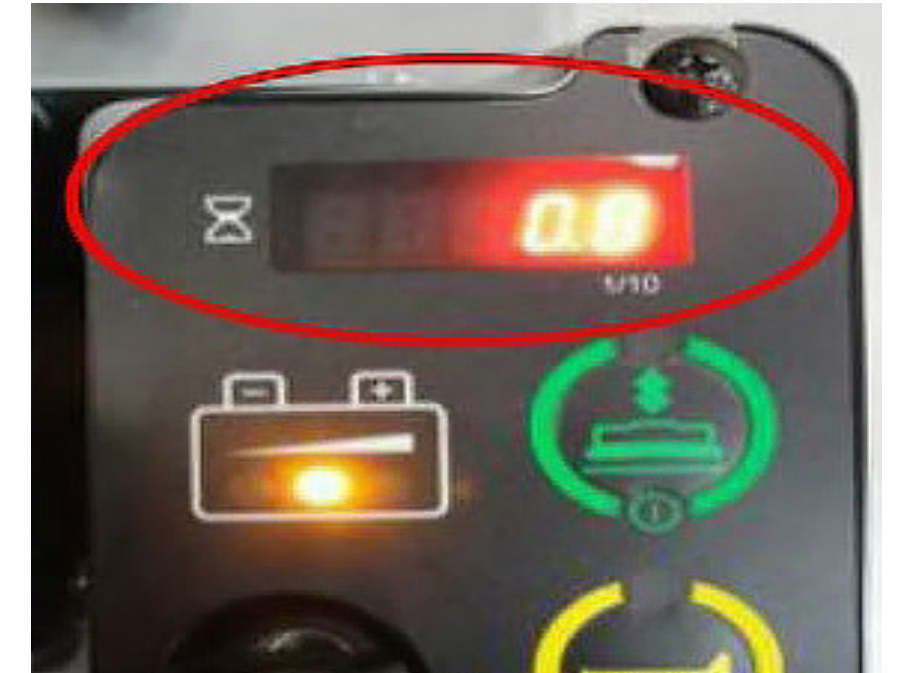
## Helpful Tips – Display Buttons



1 Press green button: lowers burnishing head and activates burnishing motor



2 Horn button

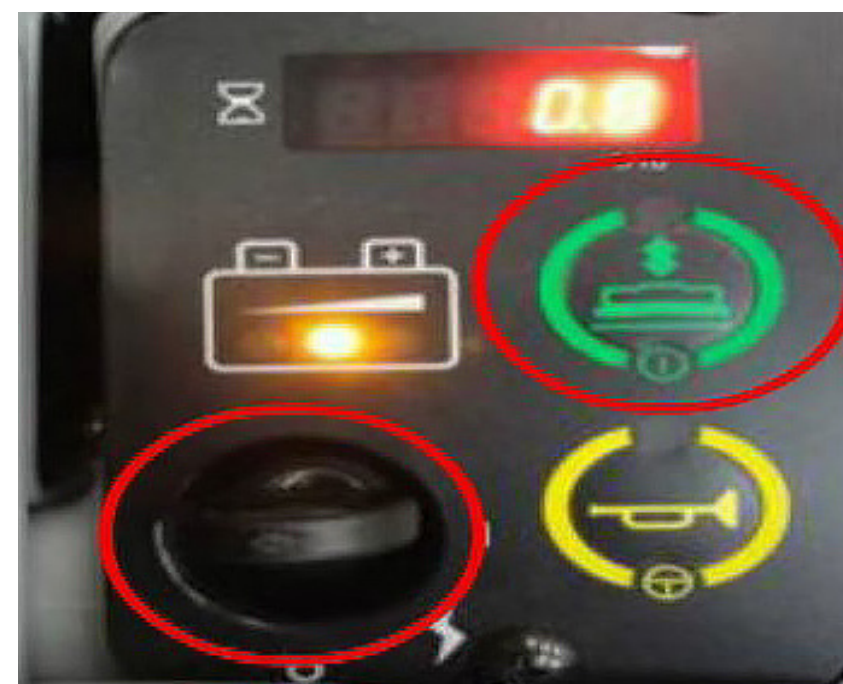


3 Hour meter & Error Display

## Adjusting Burnishing Pressure



1 Turn key switch OFF



2 Hold burnishing button and turn on key



3 Push burnishing button to select 1, 2 or 3 then turn key OFF to set burnishing pressure setting

## Efficient Burnishing



1 Have an organized route for the area to be cleaned



2 Drive machine at a consistent speed. Have a consistent overlap



3 DO NOT STOP – stopping while pad is running will leave circles on the floor

## Store the Machine



1 Transport machine to storage and charging station



2 Inspect burnishing pad



3 Open seat compartment, connect the charger and wipe down the exterior of the machine

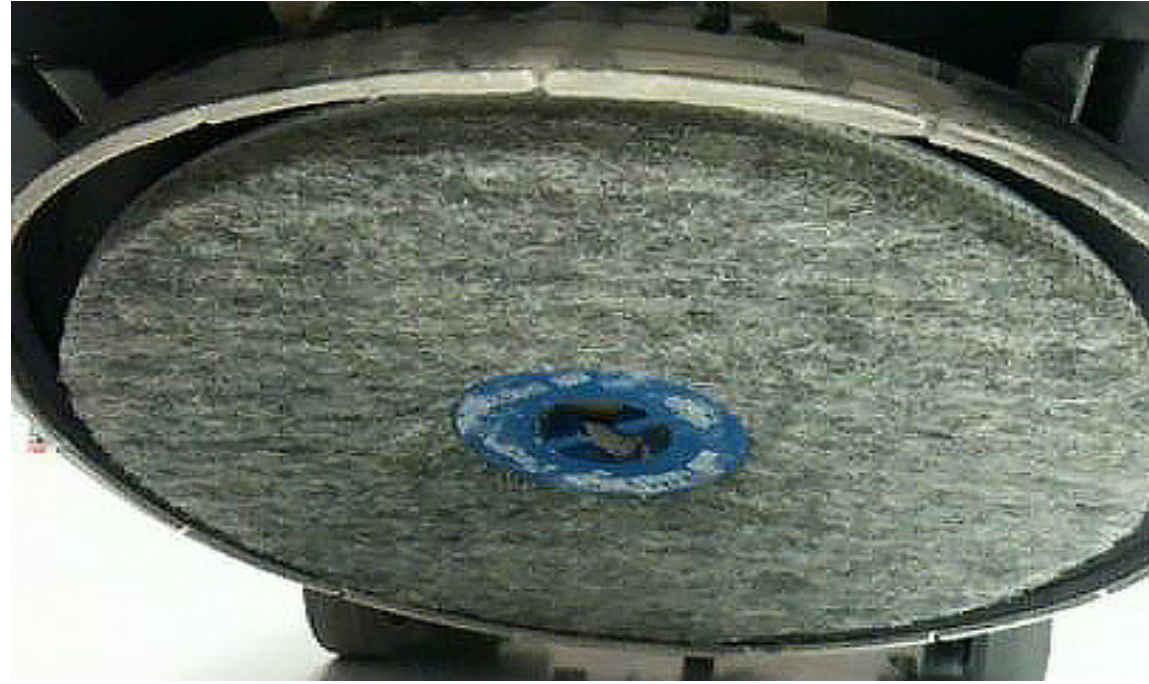
# Advolution 2710 Rider Burnisher How To

ATTENTION! Do not use the machine before you have read and understood the Instructions for User Manual

## Daily & Occasional Maintenance



1 Charge batteries daily



2 Check/Clean/Replace Burnishing Pad



3 Check/Clean/Replace Dust Collection Bag

## Weekly Maintenance



4 Check battery water levels. Optional battery watering kit shown.  
Check/Replace Pad Shroud Skirt

## Monthly Maintenance

- 5 Check steering chain tension, lubricate steering wheel shaft universal joint

## Yearly Maintenance

- 6 Check carbon brush wear on pad, wheel drive and actuator motors.  
\*Should be performed by an Authorized Service Center