

KÄRCHER

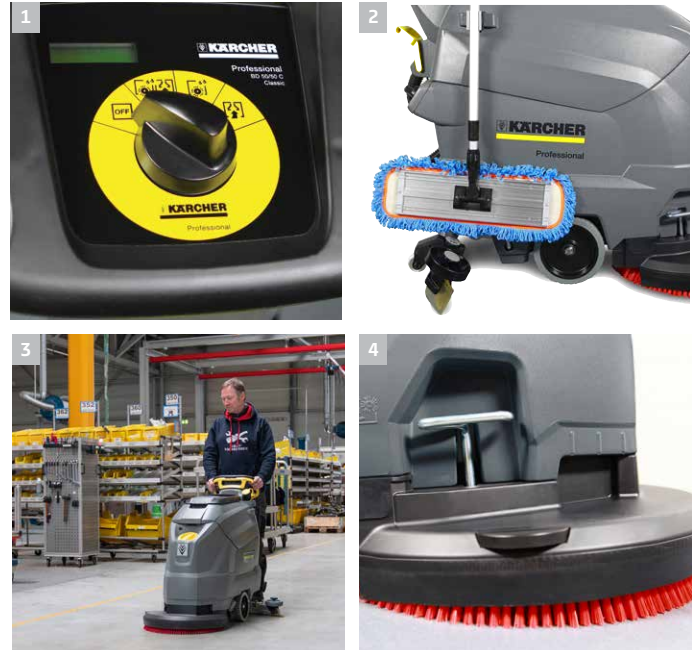
MAXIMUM CLEAN. EVERYDAY SIMPLICITY.

Powerful and economical floor care built to maximize your daily productivity.



Professional scrubbing made easy.

Maximize your daily productivity with a scrubber designed for simplicity and power. This economical walk-behind solution is perfect for high-traffic environments like retail and education. You get a clear line of sight and intuitive controls that help you achieve professional, consistent results with minimal training.



1 Simple and Intuitive Operation

- Three cleaning modes allow any operator to master the machine and deliver professional results with minimal training
- Color-coded yellow touch points clearly distinguish between daily operation and routine maintenance for a mistake-proof experience

2 Clear Visibility and Easy Handling

- An ultra-slim profile provides a clear line of sight, ensuring safer operation in busy aisles and around obstacles
- Integrated pad-assist drive uses brush rotation to pull the machine forward, significantly reducing fatigue during long shifts

3 Extended Cleaning Productivity

- Large 13.2-gallon fresh and recovery tanks minimize trips to the supply closet, allowing you to clean more area per fill
- High brush contact pressure of up to 62 lbs removes stubborn dirt in a single pass on smooth and textured floors
- Compatible with the Home Base kit so operators can carry manual cleaning tools directly on the machine

4 Rugged & Reliable Design

- A durable T-handle allows for quick, tool-free changeovers between pads and brushes to suit any floor type
- High-quality, proven components deliver legendary Kärcher durability at a highly competitive price point

Technical data and equipment.



BD 50/50 C BP CLASSIC

TECHNICAL SPECIFICATIONS

Cleaning path		in	20
Brush type	cylindrical/disc	disc	
Brush diameter		in	20
Suction bar (squeegee) width		in	35
Drive	pad-assist/traction	pad-assist	
Battery charger	shelf/on board	shelf	
Brush contact pressure		lbs	59 – 62
Solution/recovery capacity		gal	13.2 / 13.2
Theoretical/practical productivity		sq. ft/hr	21,530 / 13,995
Operating noise level		dBA	66
Brush speed (normal/boost)		rpm	180
Weight with batteries		lbs	306
Dimensions (L x W x H)		in	47 x 21 x 39

EQUIPMENT

Order No.	Description
9.841-369.0	BD 50/50 C Bp Classic, pad driver, 24V/105 Ah wet batteries
9.841-370.0	BD 50/50 C Bp Classic, pad driver, 24V/100 Ah AGM batteries

ACCESSORIES

Order No.	Description
■ 4.762-534.0	Pad driver, 20-inch, features a quick-change coupling and centerlock
■ 4.777-179.0	V-Shaped squeegee, 35-inch, with caster, polyurethane
□ 4.905-027.0	Disc brush, soft, made of natural fibers, for cleaning and polishing
□ 4.905-029.0	Brush, hard black – For stubborn dirt and basic cleaning. For hard wearing surfaces.
□ 4.905-026.0	Disc brush, medium grit, red, for general cleaning (standard on brush machines)
□ 6.369-079.0	Red disc pad, 20-inch, medium soft red for cleaning all types of floors, 5-pack
□ 6.369-078.0	Green disc pad, 20-inch, aggressive for cleaning heavily soiled floors and for deep cleaning, 5-pack
□ 6.369-077.0	Black pad, 20-inch, hard, for cleaning heavily soiled floors and for deep cleaning, 5 pack
□ 6.369-468.0	Beige disc pad, 20-inch, light grit, for polishing and refreshing of hard and elastic smooth floor coverings, 5 pack
□ 6.273-023.0	Oil resistant, replacement squeegee blades
□ 6.371-146.0	Beige disc pad, 20-inch, soft, natural hair, for polishing
□ 4.777-401.0	Squeegee, 33.5-inch, straight, made of oil-resistant transparent polyurethane, for smooth floors
□ 5.035-488.0	Home Base kit (adapter and cable hook)
□ 6.980-077.0	Double Hook (requires 5.035-488.0)
□ 4.035-406.0	Home Base kit carrying case
□ 6.980-078.0	Mop clip (requires 5.035-488.0)
□ 6.980-080.0	Bottle Hook (requires 5.035-488.0)
□ 4.070-075.0	Universal hook
□ 8.641-483.0	Charger for wet batteries (included with 9.841-369.0)
□ 8.629-377.0	Charger for AGM batteries (included with 9.841-370.0)

■ Included □ Optional

Please contact us for more information:

Kärcher U.S.A.

6398 N. Kärcher Way
Aurora, CO 80019
U.S.A.

Tel. 888-805-9852



www.karcher.com/us/professional



KarcherUSA



@kaercher_us_professional



karchercommercial



karcher-us



KarcherUSA