

A600 Shelving System

Assembly Instructions

This package includes:



Shelf Supports
(part # P642)



Cross Bars
(part # H175)



Floor Mount Brackets
(part # H162A)



Wall Anchor Brackets
(part # H346)



#14 x 2" Screws
(part # H672)
(actual size shown)



#14 x 1.25" Screws
(part # H671)
(actual size shown)



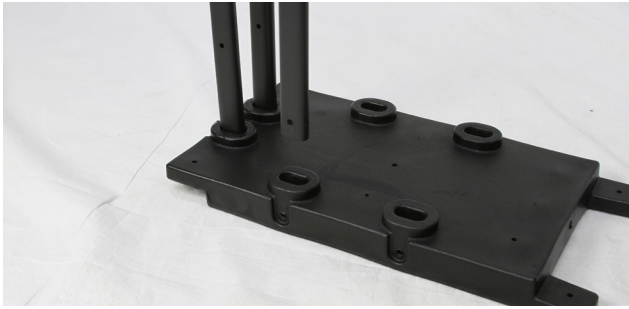
.25" Flat Washers
(part # H210)
(actual size shown)

Tools required for assembly:

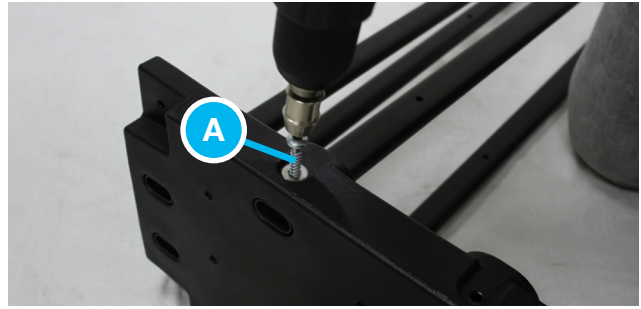


#3 Phillips Head Screwdriver
or
Drill with #3 Phillips Head Bit

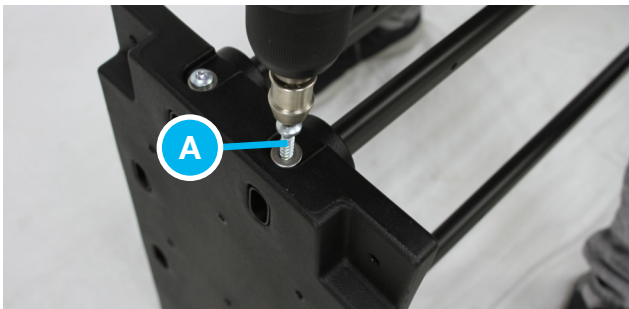
Assembling the A600 Shelving System



1. Insert four (4) shelving tubes into the four lower slots on one of the side panels.

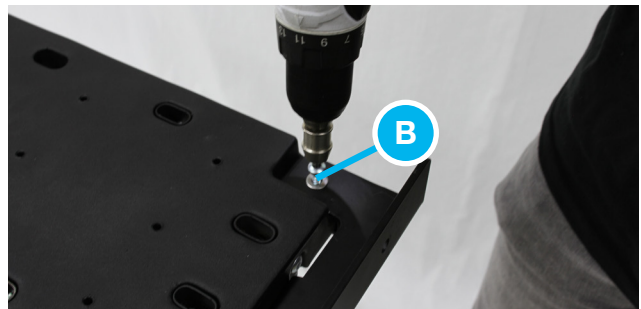


2. Screw each shelving tube into place using one of the **2" A screws** with a **.25" washer**. Screws should line up with the pre-drilled holes on the tubes.

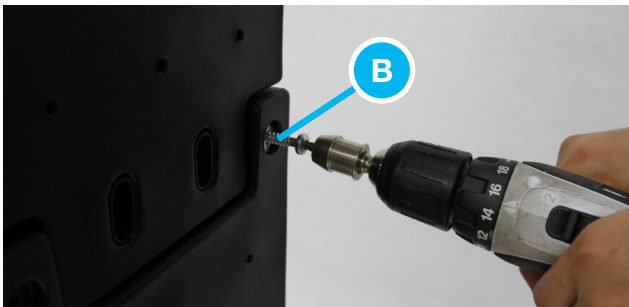


3. Place another side panel on the opposite end of the shelving rods. Make sure each rod is inserted into the correct slots and screw into place using the **2" A screws** and **.25" washers**.

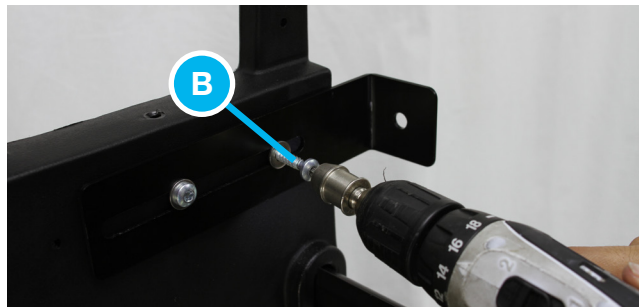
Repeat steps 1-3 two more times.



4. Take one of the assembled shelves and slide a floor mount bracket onto the bottom with the flange pointing outward. Screw into place with the **1.25" B screws** and **.25" washers**. Do the same on the other side of the shelf. **CAUTION: Do not overtighten.**



5. Turn the bottom shelf upright and stack the other two shelves on top of it. Screw each shelf together using the **1.25" B screws** and **.25" washers**.



6. Place the shelving unit in position in the van. The included wall anchors can be attached to the top or middle shelf, on the inside or outside of the supports. Screw the anchors in place using the **1.25" B screws** and **.25" washers**. **CAUTION: Do not overtighten.** Screw the anchors and floor brackets into the van. Hardware will vary depending on the van's design.