



BG-250E & BG-250P

Version 1.1

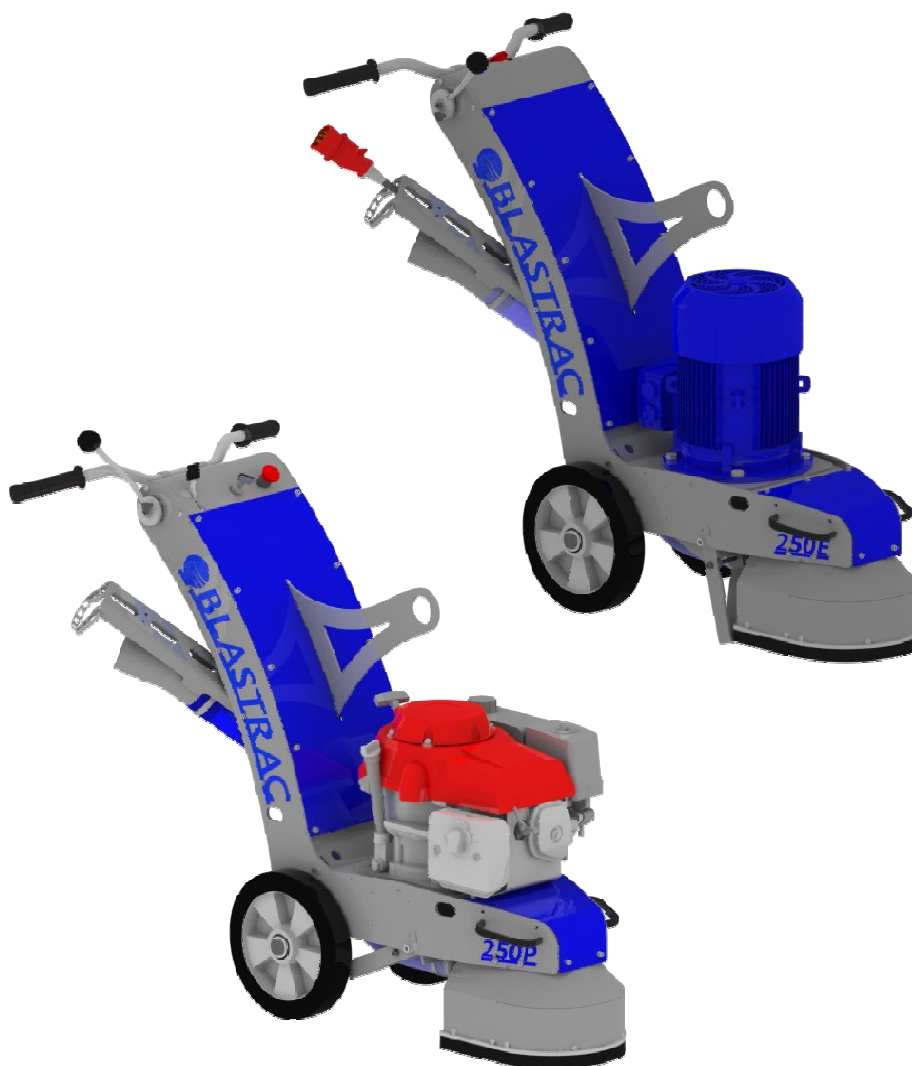


Table of contents

EC Declaration of Conformity	02
1. Introduction	04
2. Machine description	04
Application	
Accessories	
3. Safety	05
Safety precautions	
Safety regulations	
Safety instructions	
4. Initial operation	07
Checkpoints of electrical safety	
Checkpoints of machine safety	
Removing the diamond disc	
Mounting the diamond disc	
5. Operating	08
Switch on the BG-250E	
Switch off the BG-250E	
Switch on the BG-250P	
Switch off the BG-250P	
Operating during grinding	
6. Maintenance	10
Replacing the flexible coupling	
7. Technical data	11
Contact	12

1. Introduction

It is important that all persons who are working or maintaining with this machine will read the manual carefully and understand it fully. Keep this manual near to the machine, so it can always be consulted.

Only authorized and trained personnel may operate this machine.

2. Machine description

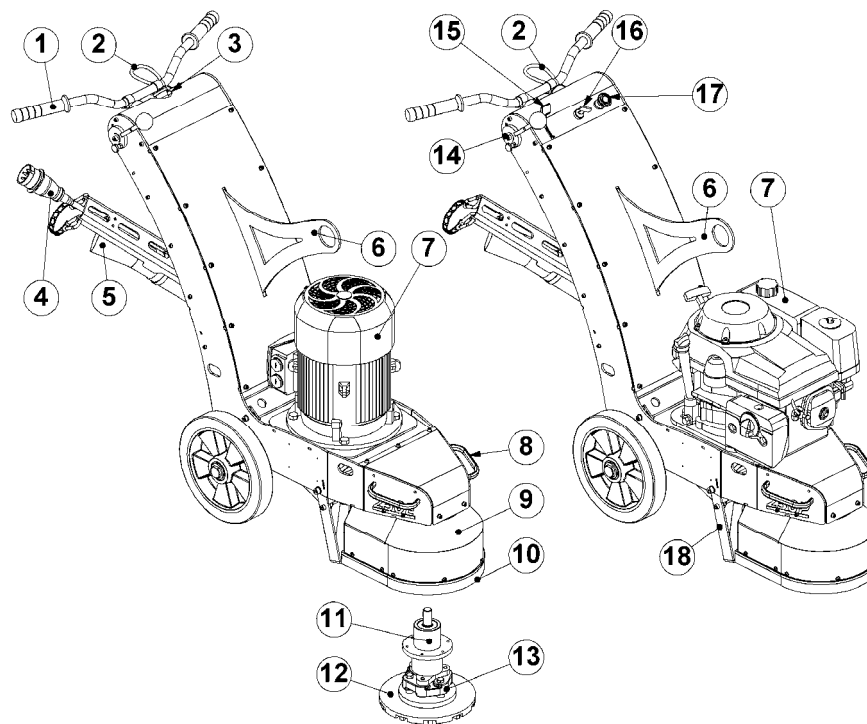
The BG-250 is an electric or gas driven floor grinding machine for treating horizontal surfaces.

The machine has a rotating adapter plate where the diamond disc can be fixed on. The rotating parts are covered by a protection cap with a connection for a dust hose. With a suitable Blastrac dust collector you can work without causing dust.

Application

The BG-250 can be used on almost any floor to plane, to remove coatings or glue residues or to make ready for coatings.

1	Steer handle	7	Drive motor	13	Flexible coupling
2	Cord & key for deadman switch	8	Lifting handles	14	Lever handle
3	On / Off emergency switch	9	Dust cap	15	Gas throttle
4	Socket with phase inverter	10	Brush for dust cap	16	Contact switch
5	Dust hose connection	11	Bearing unit	17	Stop button
6	Lifting eye	12	Grinding disc	18	Machine support



3. Safety

Before operating the machine, the personnel must be familiar with the safety instructions given in this manual.

Keep this manual with the machine, so it can always be consulted.

Safety precautions

- The surface to be treated must be swept clean to remove stones, screws etc.
- Never use the machine when the surface is not clear and if there is a risk of tripping.
- Be careful with water on the treated surface. Electrical cables must not come into contact with water.
- Remove any electrical cable and or dust hose from the surface to be treated
- Always use a dust collector when grinding dry.
- Don't get disturbed during the activities.

Safety regulations

- Persons who are not operating the machine must not be permitted to stay in the surrounding area of the machine.
- Don't change anything on the machine. Use always cables which are approved and grounded cables. The machine is always equipped with a grounded connection, do not change this and use always grounded cables with a grounded plug.

- Connect main power supply cable to an installation with a ground leakage circuit breaker.
- Inspect and test the electrical components regularly. The electrical components have to satisfy the requirements which apply to these components.
- Always call a skilled electrician or your distributor when you have questions about the safety of the electrical components.
- Work on electrical equipment or operating materials may only be undertaken by a skilled electrician or by trained persons under the guidance and supervision of a skilled electrician as well as in accordance with the electrical engineering regulations.
- Disconnect the main plug (on electrical versions) during inspection, maintaining, disc change and/or repairing on the machine.
- Never use the machine in the rain.
- The machine contains rotating parts, so always leave the diamond disc on the floor while the motor is turning.
- The flexible coupling can become obsolete with use, because of this there can be higher vibrations than normal. Check for this reason regularly the flexible coupling.



The following sticker is placed on the machine.



Meanings of these symbols are:

- Ear protection is obliged
- Safety glasses with lateral protection are obliged
- CE-mark on this machine
- Safety shoes obliged
- Consult the manual before operating the machine

Personnel must tie back long hair and not wear loose clothing or jewellery including rings. Wear gloves and dust mask during operating the machine.

Safety instructions

- Do not stand the machine on the diamond disc or coupling when it is not in use, this will cause deformation to the flexible coupling. Put the machine always on the machine support which is made for this reason.
- Make sure the machine is clean and that the handgrips are dry and free of grease and oil.
- Make sure the brush seals are in good condition, this to avoid dust.
- Disconnect the main plug (on electrical versions) when changing the disc or flexible coupling.
- It is not allowed to lift the machine without use of appropriate appliances as a lift or crane.
- Lift the machine up on the lifting eye.



4. Initial operation

Before using the machine it is committed to inspect the machine.

It is not permitted to use the machine if the machine safety is not according to the checkpoints below.

Checkpoints for electrical safety

- Use only extension cables for extending the main cable that are sized and marked in accordance with the overall power consumption of the machine.
- Electrical cables must be rolled entirely off of the reels.
- Any damage to electric cables is not permitted
- Use an electrical power supply connection with earth connection
- Be careful with water on the treated surface. Electrical cables must not come into contact with water.

Checkpoints of machine safety

Check if:

- The safety functions and operating functions work correct.
- The flexible coupling is not deformed or damaged
- The diamond disc is not damaged
- There are no damages on the electrical components.
- There is no oil or petrol leaking out of the petrol engine.
- There are not any loose nuts or bolts
- There is no damage to the dust hose and if it is connected well.

Removing the diamond disc

- Make sure the key of the deadman switch and the power supply plug (on electrical versions) are out of the machine
- Lay down the machine so it is lying on the handle. Make sure the machine will not fall back down. A second person can stand on the handle to make sure it will not fall back down.
- Loosen the 4 bolts with an appropriate key.
- Remove the diamond or multiflail disc.

Mounting the diamond disc

- Make sure the power supply plug is out of the machine.
- Lay down the machine so it is lying on the handle. Make sure the machine will not fall back down. A second person can stand on the handle to make sure it will not fall back down.
- Fix the diamond or multiflail disc underneath the adapter plate and turn the 4 bolts with an appropriate key tight.

5. Operating

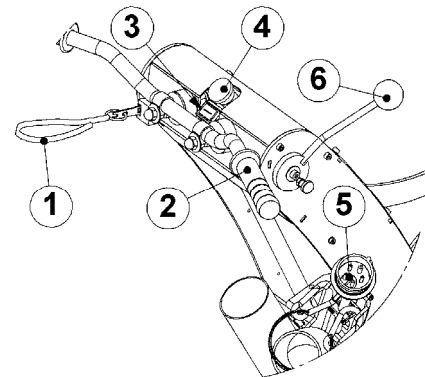
During operating the BG-250, the following additional safety instructions must be followed closely.

Switch on the BG-250E

- Turn on the dust collector before switching on the machine.
- Connect the dust hose with the machine
- Stand behind the machine
- Make sure that the machine stands on the machine support.
- Take the steering handle (2) with one hand and push the start button (3)
- Check if the machine turns the right direction. The fan has to turn clockwise when looking on top of the fan.
- If not, push the stop button (4) and turn the phase inverter in the socket (5) and start the machine again.
- Lift the machine support with the lever handle (6) and let down the machine till the diamond disc hits the floor
- Start grinding

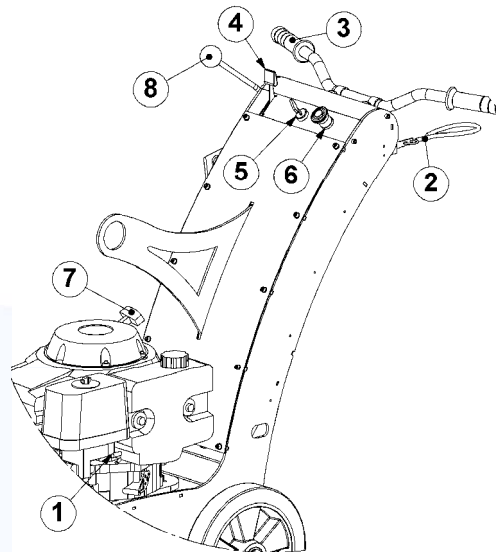
Switch off the BG-250E

- Push the red button (4) on the electrical box
- Wait until the machine stops rotating before you set the machine on the support with the lever handle (6)
- Disconnect the main power supply
- Shut down the dust collector.



Switch on the BG-250P

- Turn on the dust collector before switching on the machine.
- Connect the dust hose with the machine
- Open the fuel valve (1)
- Stand behind the machine
- Make sure that the machine stands on the machine support.
- Put the cord of the deadman switch (2) on to your arm or put it on to your clothing.
- Check if the key of the deadman switch (2) is in and the emergency stop button (6) is turned up.
- Take the steering handle (3) with one hand pull the gas throttle (4) up to the half and turn the contact switch (5) to start the engine.
- When the accu is empty, the machine could always be started with the cord (7)
- Lift the machine support with the lever handle (8) and let down the machine till the diamond disc hits the floor
- Start grinding and pull the gas throttle (4) for more grinding speed.

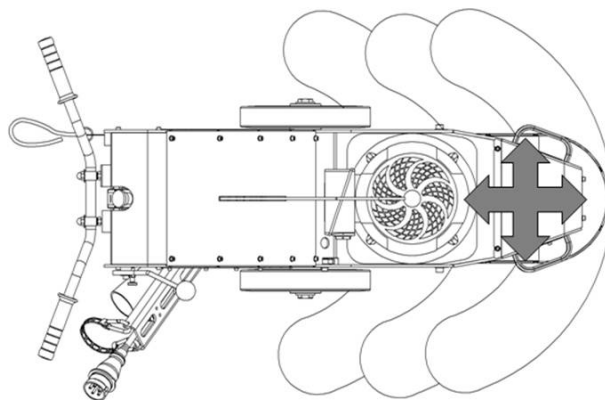


Switch off the BG-250P

- Push the gas throttle (4) to the front.
- Push the red button (6)
- Wait until the machine stops rotating before you set the machine on the support with the lever handle (8)
- Pull out the power supply and the key of the deadman switch (2)
- Close the fuel valve (1)
- Shut down the dust collector.

Operating during grinding

To get an optimum result during grinding, the machine may not stand still. The machine must always be in movement so it does not grind too deep into the floor. Move the machine from left to right and from forward to backwards to get a nice flat result.



6. Maintenance

Work only with original Blastrac parts.

Check regularly to see if the diamond disc is in good condition. Replace immediately the diamond disc when this is damaged or worn out.

Check if the flexible coupling is stiff enough after every day working. Replace if any deformation or damage is found.

Unusual vibrations on the machine check immediately the diamond disc and flexible coupling

Replacing the flexible coupling:

- Pull out the key of the deadman switch. (gas version)
- Pull out the main plug (electric version)
- Remove the diamond disc
- Remove the dustcap
- Loose the bolts of the adapter plate and the flexible coupling
- Take a new flexible coupling (part number: 000118-3) and 12x new bushes (part number: 000118-3/BUSH) assemble this together with the adapter plate on the fixed coupling on the motor axle.
- Mount the dustcap.

Prevent premature wear by keeping the machine as dust free as possible. Clean the machine for this reason regularly with a dust collector

Clean the machine every day with air and non-aggressive materials. Never use a high pressure water cleaner to clean the machine.

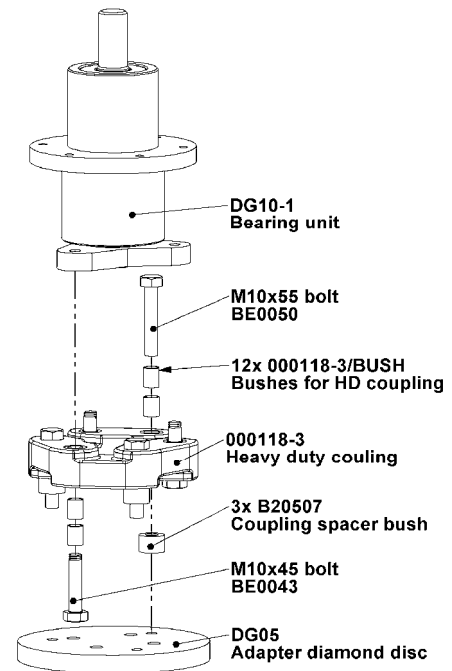
Remove the diamond disc after using the machine

Store the cleaned and dry machine in a dry and humid free room. Protect the electrical motor from moisture, heat, dust and shocks.

All repair work must to be done by qualified Blastrac personnel, this to guarantee a safe and reliable machine.

Any guarantee on the machine is expired when:

- Non original Blastrac parts and diamond discs have been used
- Repair work is not done by qualified Blastrac personnel
- Changes, add on´s or conversions are undertaken without written permission of Blastrac.



7. Technical data

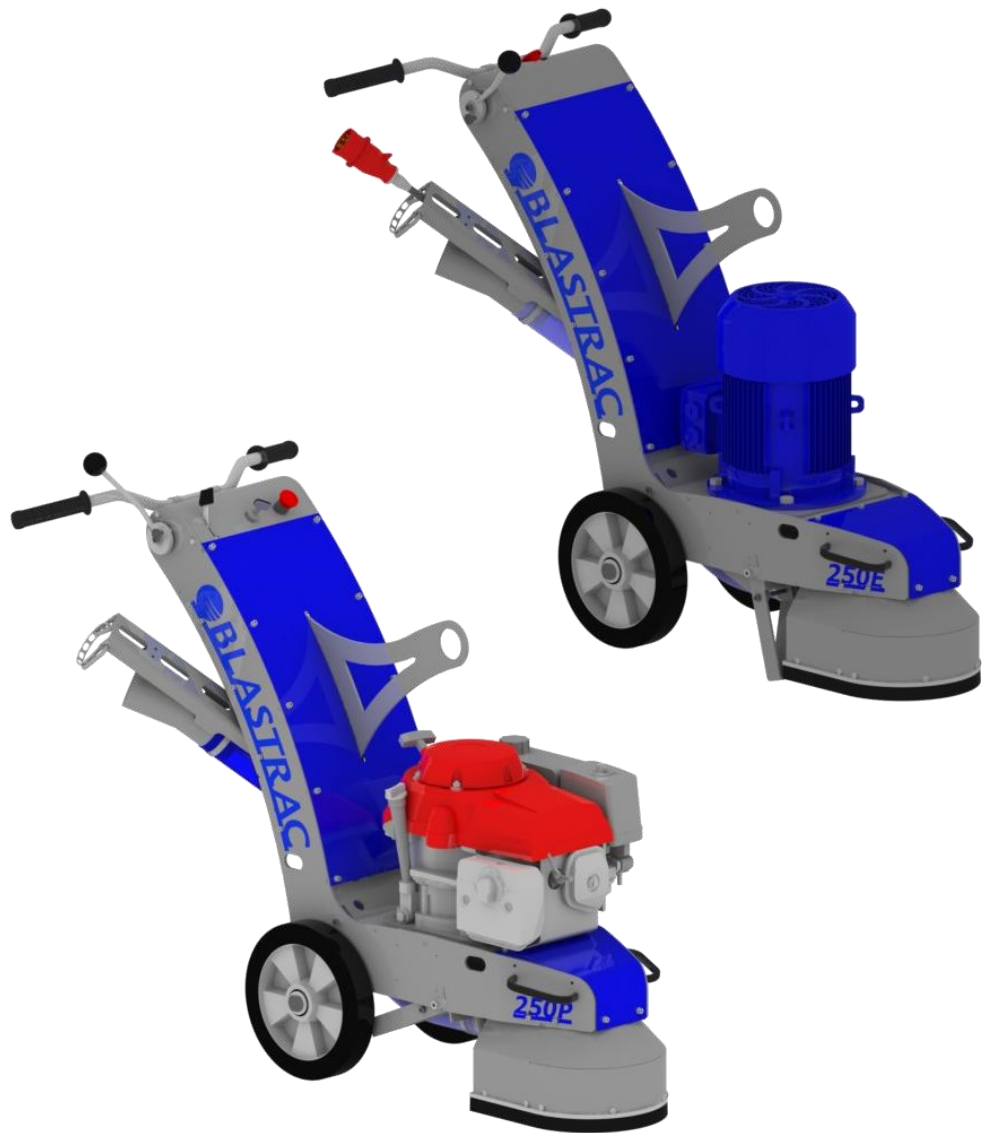
		BG250EMKII	BG250PMKII
Power consumption		5hp	13hp
Electrical connection		230V / 60Hz	-
Diameter diamond disc		10"	10"
Working width		10"	10"
Rotation speed		1950 min ⁻¹	2000 min ⁻¹
Length		4'	4'
Width		1.5'	1.5'
Height		3.5'	3.5'
Weight		322 lbs	313 lbs
Disc pressure		121 lbs	110 lbs
Noise level (under load)		83dB(A)	90dB(A)
Dust hose connection		3"	3"
Suitable filter unit	Contact Blastrac We will assist you with a properly matched unit		

Design and specifications are subject to change without notice by Blastrac



BG-250E & BG-250P

Version 1.2

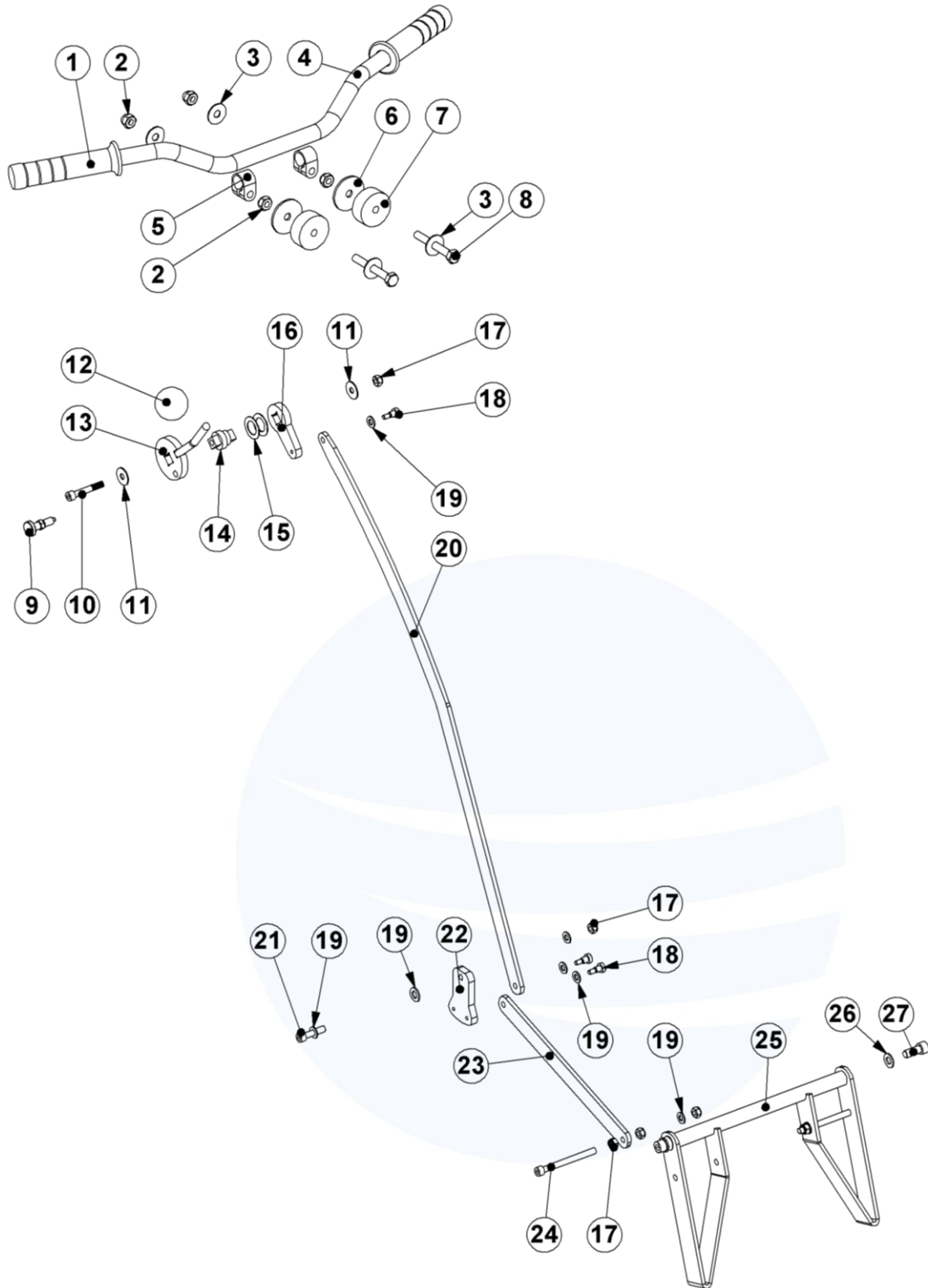


Index

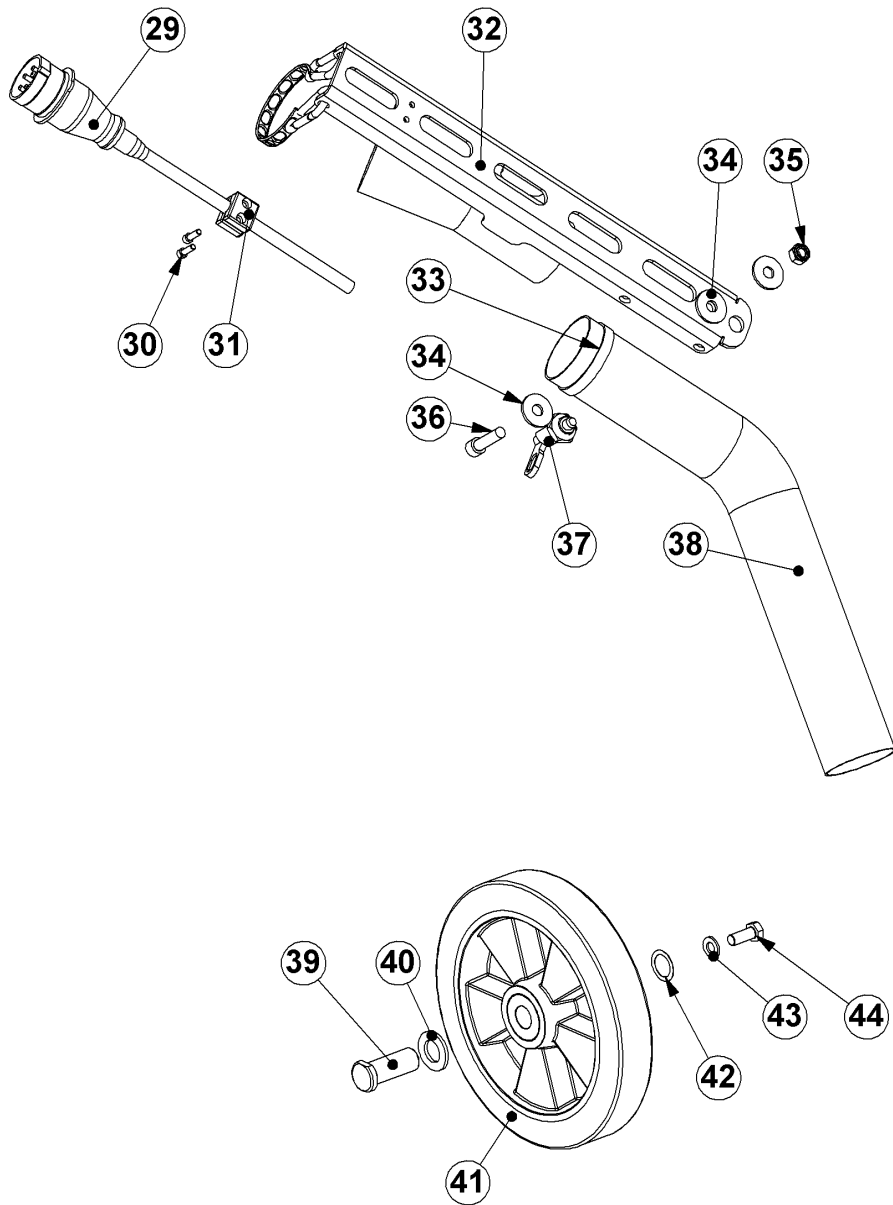
1. Spare parts			03
2. Electric schedules			
Electric circuit diagram E07396/7	BG-250G – 13HP		13
Layout and Device Settings P005084	BG-250E		16



1. Spare parts

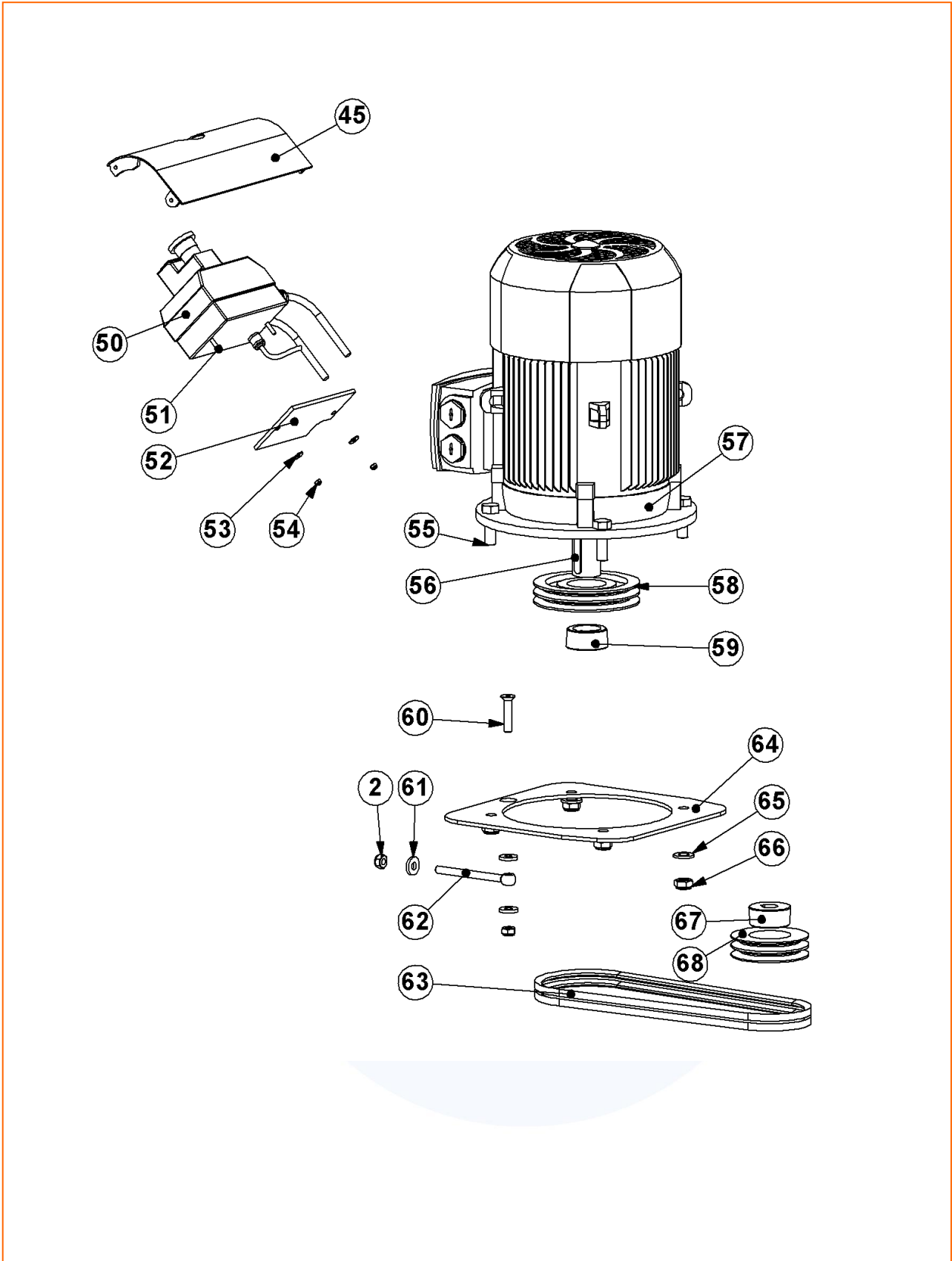


Item	Part number	Description	Remarks	Qty.
1	DG44	Grip rubber		2
2	BE0002	M10 domed cap nut	DIN 1587	2
3	BE0062	M10x30x1.5 washer		4
4	DG31	Steering handle		1
5	DG31/1	Steering handle clamp		2
6	BE0063	M10x50x3 washer		2
7	E03262	Vibration absorber		2
8	BE0371	M10x80 hexagon bolt	DIN 933	2
9	001171	Plunger		1
10	BE0439	M8x50 inbus bolt	DIN 912	1
11	BE0318	M8x25x1.5 washer		
12	E07346	Handle lever		1
13	E03365_2	M10 knob		1
14	E07348	Lever shaft		1
15	BE0060	Shim 20x32x1	DIN 988	2
16	E07349	Lever		1
17	BE0048	M8 lock nut	DIN 985	4
18	BE0642	M6 8x8 shoulder bolt		3
19	BE0003	M8 washer	DIN 125-1A	8
20	E07350	Lever 1		1
21	BE0193	M8x35 inbus bolt	DIN 912	1
22	E07351	Lever 2		1
23	E07352	Lever 3		1
24	BE0647	M8x90 inbus bolt	DIN 912	2
25	E07353	Machine support		1
26	BE0004	M10 washer	DIN 125-1A	2
27	BE0443	M10x25 inbus bolt	DIN 912	2
28				



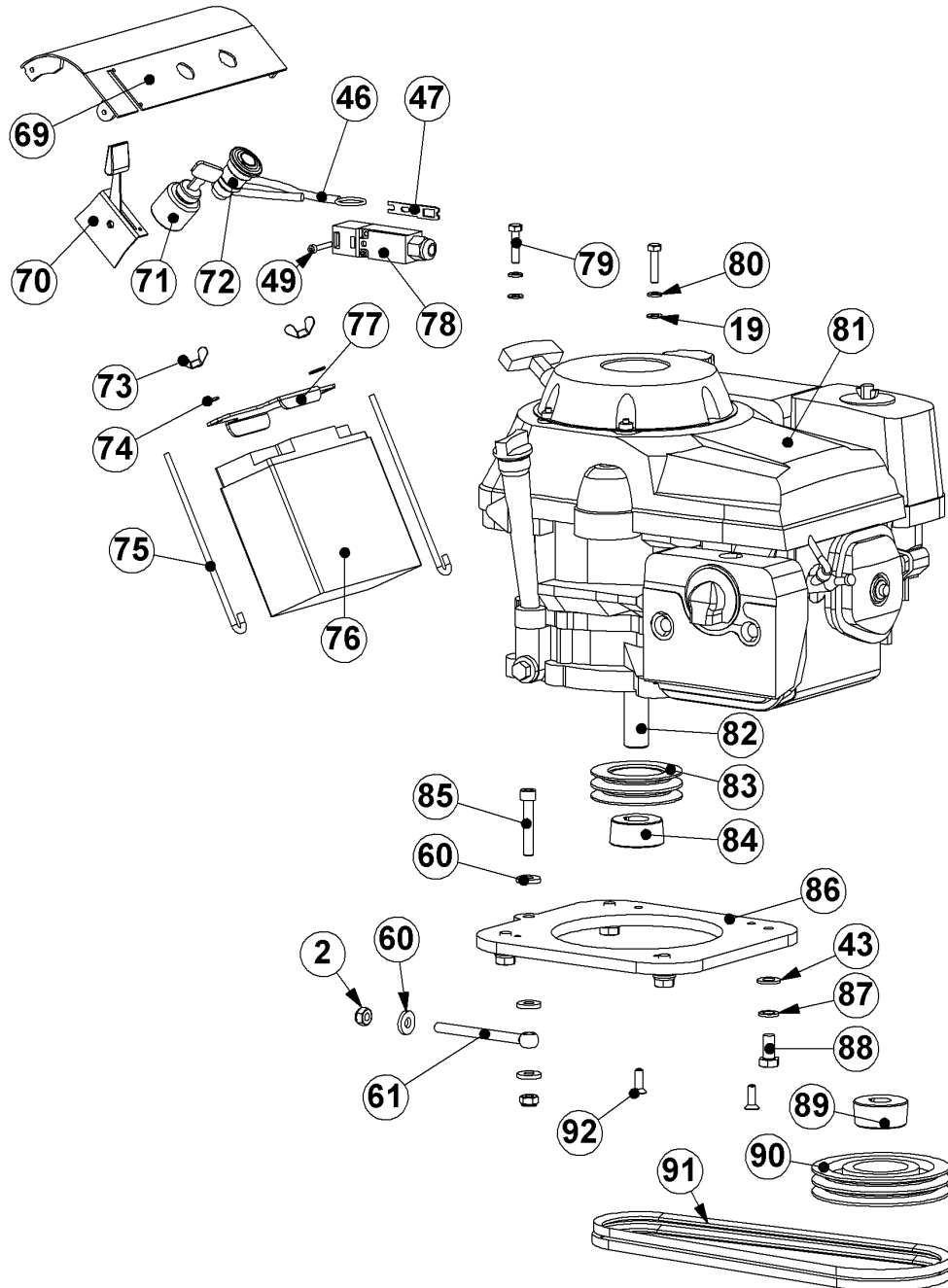
Item	Part number	Description	Remarks	Qty.
29	009425	Plug 16A with phase inverter		1
30	BE0020	M6x20 inbus bolt	DIN 912	2
31	999-9159	Pipe clamp 12mm (set)		1
32	E07335	Swing arm for BG-250		1
33	E04734	Hose clamp		2
34	BE0669	M12x37x3 washer	DIN 9021	3
35	BE0073	M12 lock nut	DIN 985	1
36	BE0200	M12x45 inbus bolt	DIN 912	1
37	E06994	Fast locking pin with nut		1
38	005014	76mm hose		1m
39	BG11765-1	Bolt for wheel		2
40	BE0308	M24 washer	DIN 125-1A	2
41	E07289	Wheel		2
42	BE0335	Shim 25x35x0.5	DIN 988	6
43	BE0126	M12 washer	DIN 125-1A	2
44	BE0037	M12x30 hexagon bolt	DIN 933	2



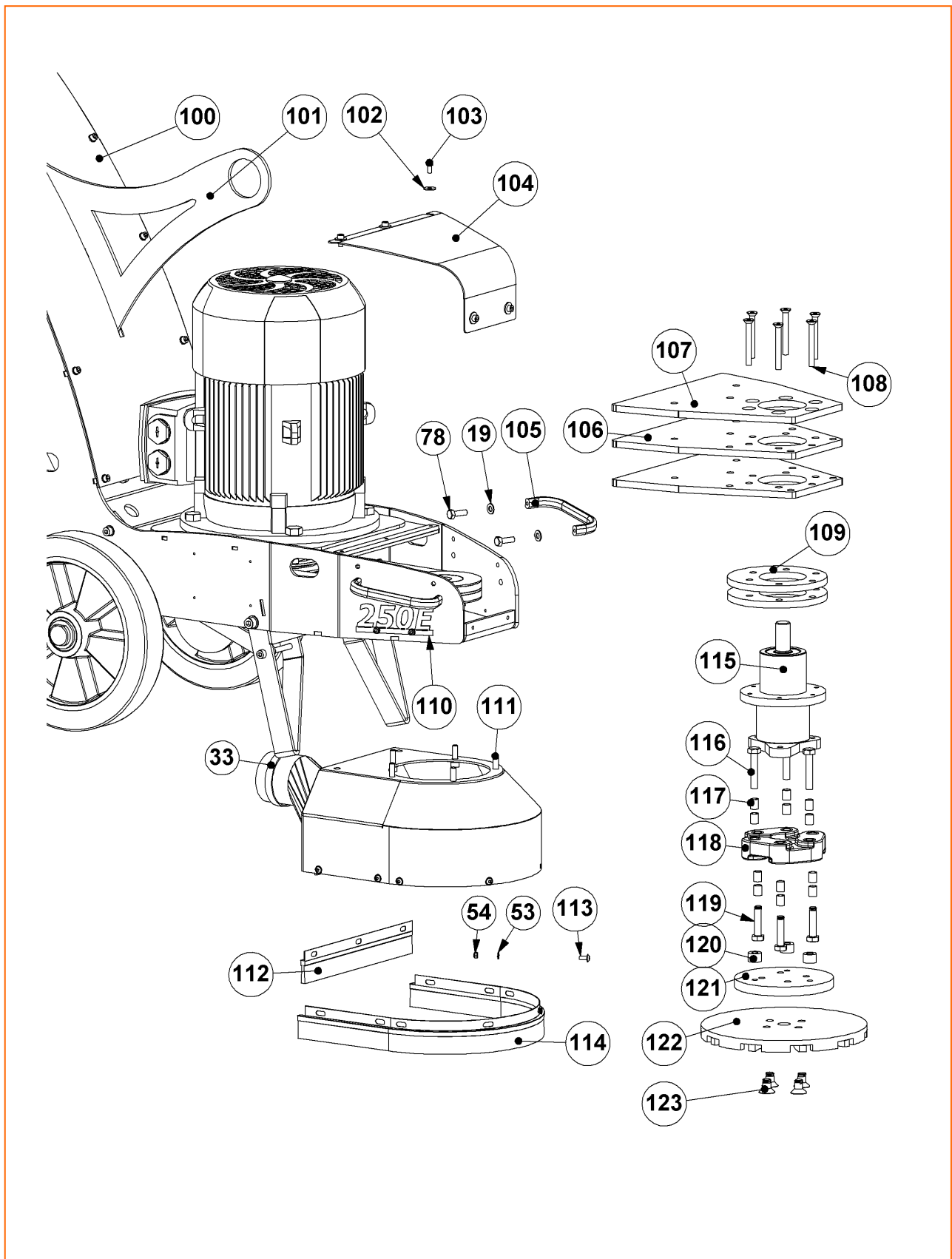


Item	Part number	Description	Remarks	Qty.
45	E07357	Top cover		1
46	N/A			
47	N/A			
48	N/A			
49	N/A			
50	P005084	Electrical control panel	230V-60Hz	1
51	BE0183	M5x25 inbus bolt	DIN 912	2
52	E00709	Shock absorbing plate		1
53	BE0317	M5x15x1.2 washer	DIN 9021	2
54	BE0272	M5 lock nut	DIN 985	2
55	BE0670	M14x45 hexagon bolt	DIN 933	4
56				
57	CP-10389	Motor 230V/60Hz /		1
58	DG12	Motor pulley	60Hz	1
59	06300025	Motor taperlock		1
60	BE0671	M10x50 countersunk screw	DIN 7991	1
61	BE0013	M10x25x4 heavy washer	DIN 7349	3
62	BE0672	M10x120 eye bolt	DIN 444LB	1
63	CP-10404	Drive belt	60Hz	2
64	E08738	Motor plate		1
65	BE0121	M14 washer	DIN 125-1A	4
66	BE0120	M14 lock nut	DIN 985	4
67	CP-10403	Bearinghouse taperlock		1
68	CP-10402	Bearinghouse pulley		1

For more information about the electrical parts and their part numbers, see electric schedule in back of the service manual.



Item	Part number	Description	Remarks	Qty.
69	E07390	Top cover BGP		1
70	E07396/6	Gas throttle including cable		1
71	E07396/4	Contact switch		1
72	E07396/5	Emergency stop button complete		1
	E07396/8	Contact block	NO	1
73	BE0292	M6 wing nut	DIN 315	2
74	BE0022	M6x18x1.6 washer	DIN 9021	2
75	E07467	J-hook for battery		2
76	E07396/1	12V battery		1
77	E07205	Mounting bracket battery		1
78	E07466	Deadman switch for P-versions	NO/NC	1
79	BE0015	M8x35 hexagon bolt	DIN 933	2
80	BE0005	M8 spring washer	DIN 127B	2
81	P003649	13HP Honda gas motor		1
82	E04750	Key for Honda motor		1
83	DG14	Motor pulley		1
84	E03188	Motor taperlock		1
85	BE0197	M10x60 inbus bolt	DIN 912	1
86	E08738	Motor plate		1
87	BE0027	M12 spring lock washer	DIN 127B	4
88	BE0372	M12x25 hexagon bolt	DIN 933	4
89	DG13	Bearinghouse taperlock		1
90	DG12	Bearinghouse pulley		1
91	DG16	Drive belt		2
92	BE0663	3/8 x 1" hexagon bolt		2
	E07396/7	Cable loom for BG-20P		1
	333-3573	Fuse 10A		1
46	BG11758	Cord for deadman switch		1
47	BG11759	Key for deadman switch		1
49	BE0184	M5x30 inbus bolt	DIN 912	2

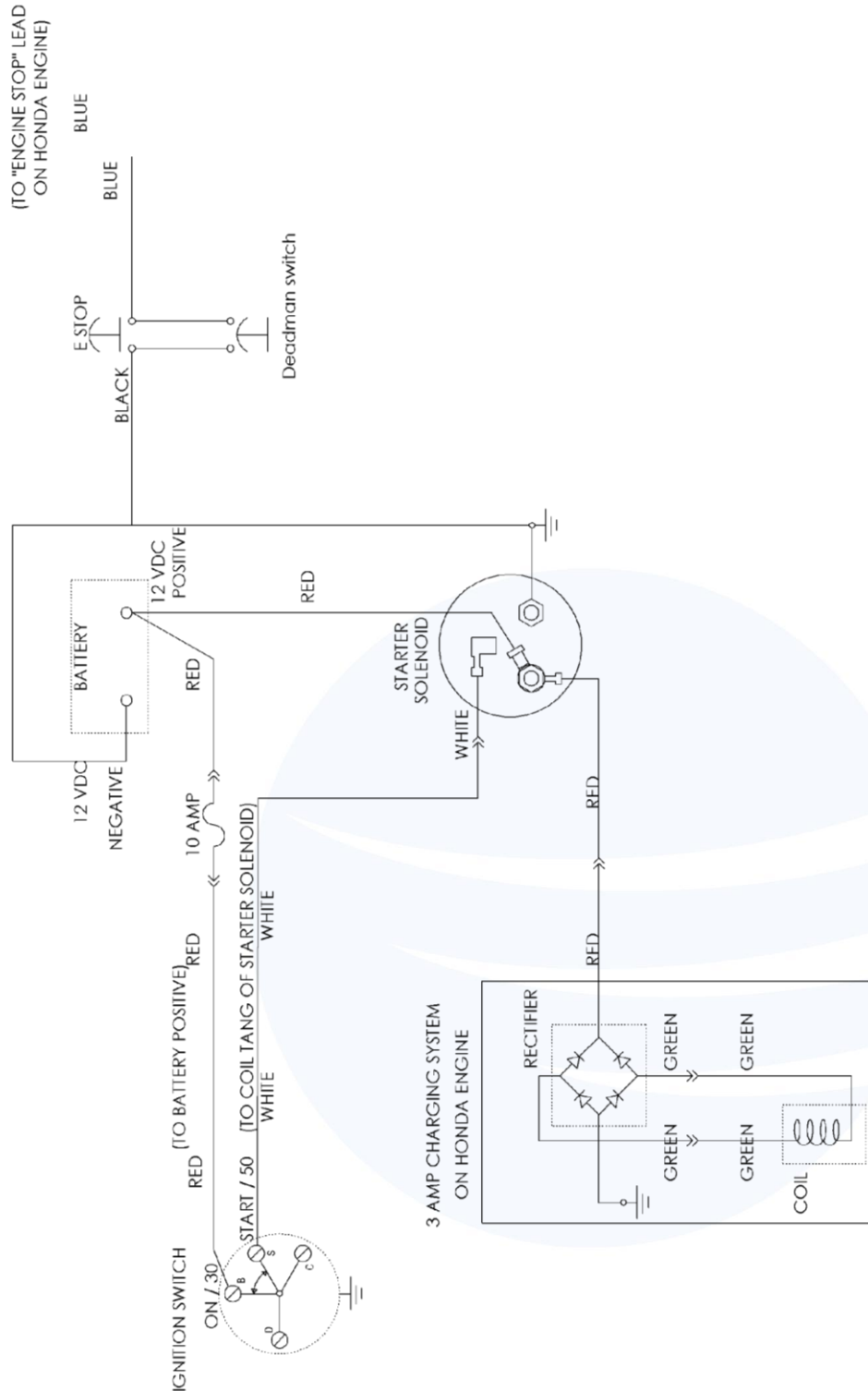


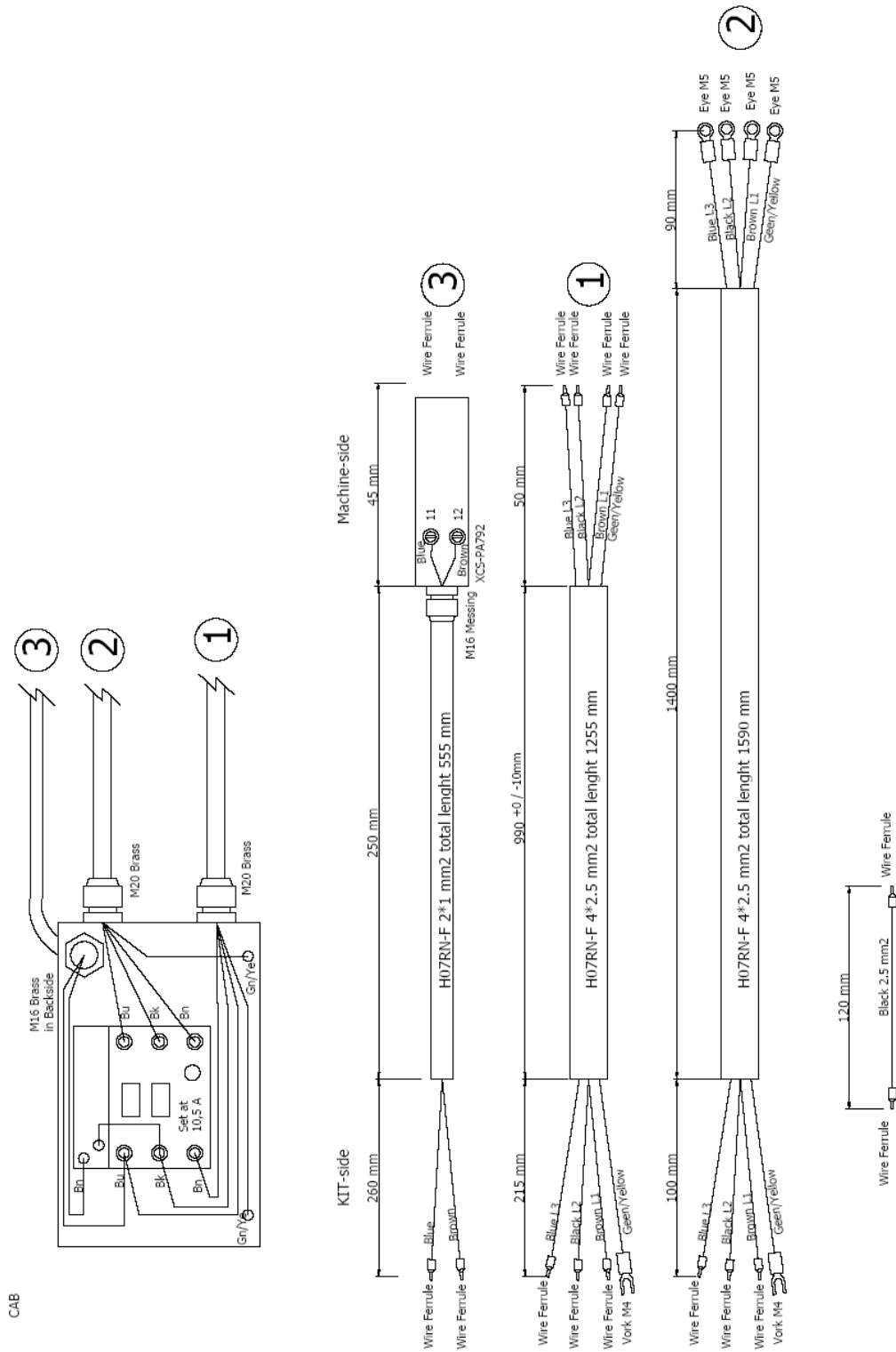
Item	Part number	Description	Remarks	Qty.
100	E07336-BL	Front plate blue		1
101	E07288	Frame BG-250		1
102	BE0022	M6x18x1,6 washer	DIN 9021	5
103	BE0187	M6x12 inbus bolt	DIN 912	5
104	E07345-BL	Front cover blue		1
105	970385	Lifting handle		2
106	E07340	Weight plate		2
107	E07377	Top weight plate		1
108	BE0673	M8x70 countersunk screw	DIN 7991	6
109	E07339	Fill up plate		2
110	E07382-BL	250E logo blue		2
	E07383-BL	250P logo blue		2
111	BE0012	M8x25 inbus	DIN 912	7
112	E07379	Brush seal back		1
113	BE0668	M5x12 hex socket button head scr		11
114	E07378	Brush seal front		1
115	DG10-1	Bearing unit		1
116	BE0399	M10x55 bolt	DIN 931	3
117	000118-3/bush	Bushes for flexible coupling		12
118	000118-3	Heavy duty flexible coupling		1
119	BE0398	M10x45 bolt	DIN 931	3
120	B20507	Coupling spacer bush		3
121	DG05-1	Adapter diamond disc		1
122		Grinding tool		
123	BE0099	M12x20 countersunk screw	DIN 7991	4

2. Electric schedules

Electric circuit diagram E07396/7

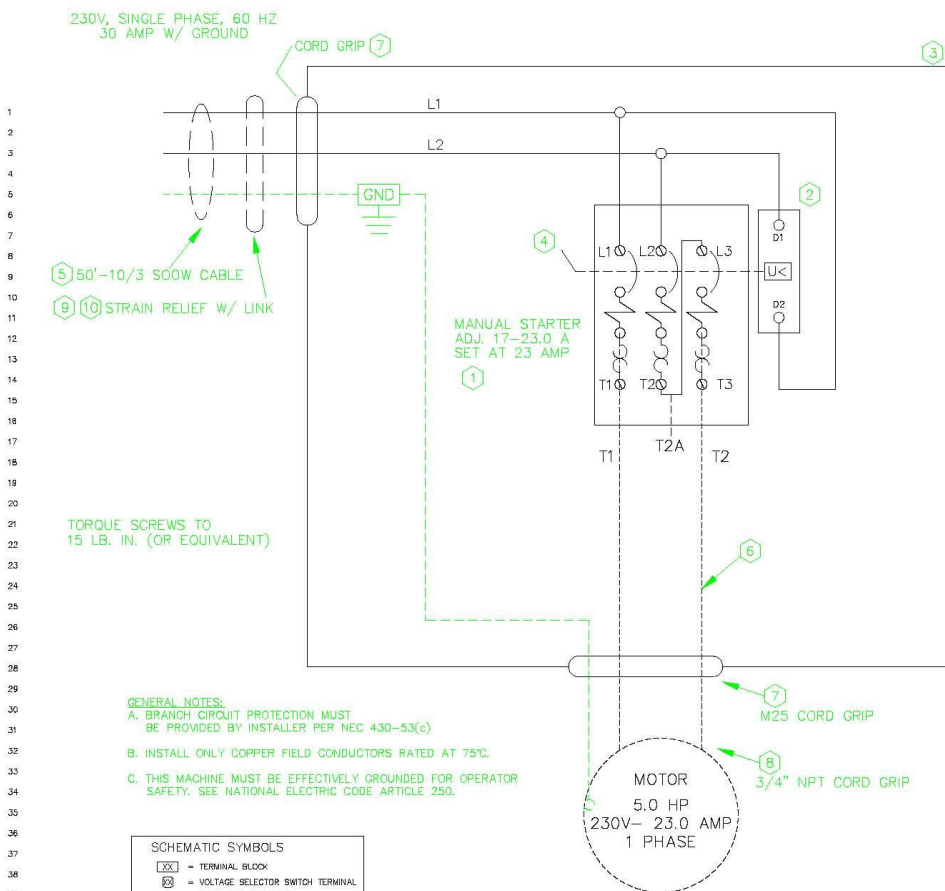
BG-250G – 13HP





BG-E 250 VER 2 CONTROL PANEL FOR 230V/60Hz 1 PHASE

TOTAL FLA	LARGEST MOTOR FLA	□ SUPPLY VOLTAGE
23.0 AMPS	23.0 AMPS	230V
PHASE - 1	ENCLOSURE - TYPE 1	
HERTZ - 60	MODEL- BG-E 250/1 VER 2	
MAX. BRANCH CIRCUIT PROTECTION	30 AMPS	
SHORT CIRCUIT CURRENT:	10 kA RMS SYMMETRICAL, 230 V MAXIMUM	



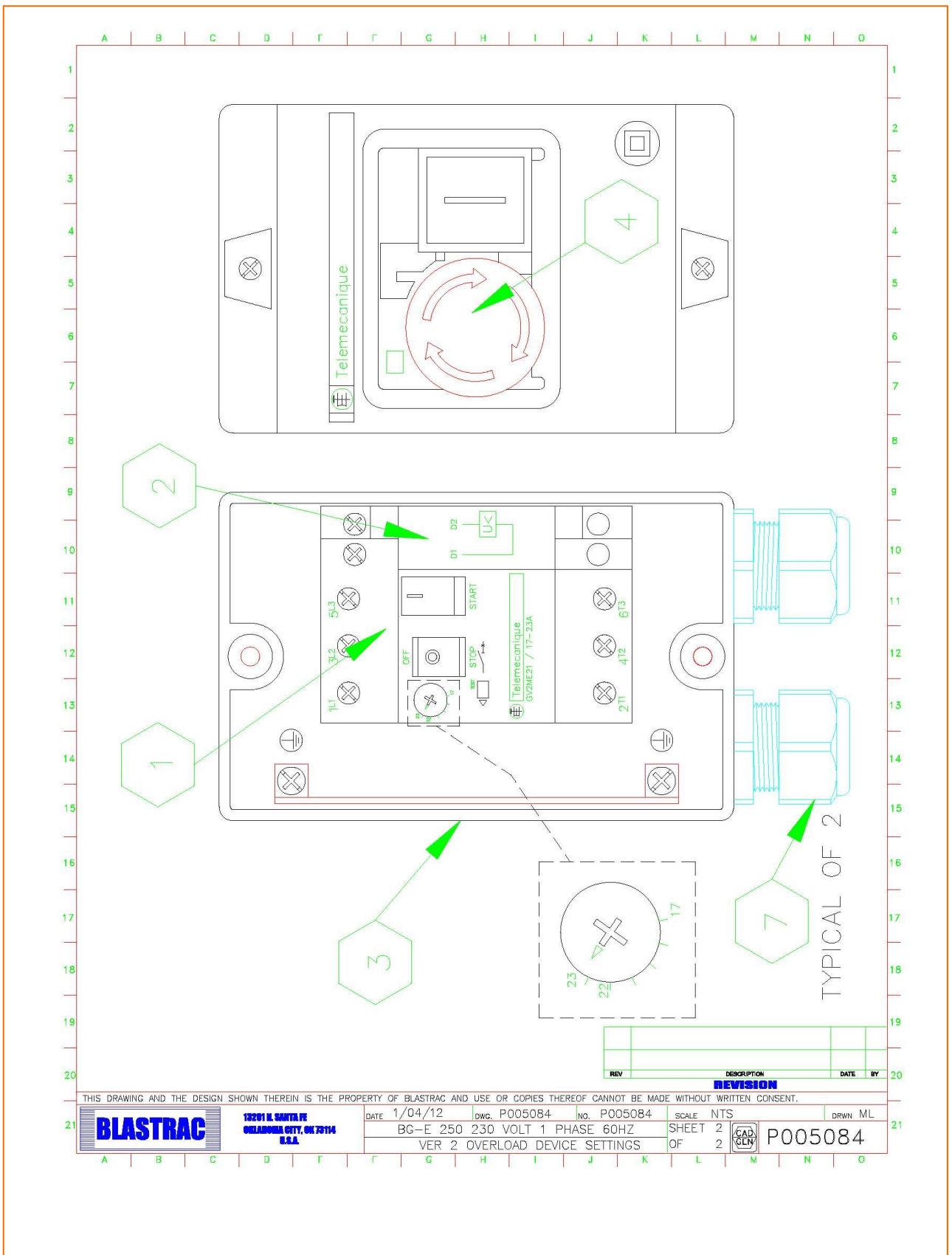
- GENERAL NOTES:**
- A. BRANCH CIRCUIT PROTECTION MUST BE PROVIDED BY INSTALLER PER NEC 430-53(c).
 - B. INSTALL ONLY COPPER FIELD CONDUCTORS RATED AT 75°C.
 - C. THIS MACHINE MUST BE EFFECTIVELY GROUNDED FOR OPERATOR SAFETY. SEE NATIONAL ELECTRIC CODE ARTICLE 250.

SCHEMATIC SYMBOLS	
	= TERMINAL BLOCK
	= VOLTAGE SELECTOR SWITCH TERMINAL
	= ELECTRICAL JUNCTION
	= COMPONENT TERMINAL AND NUMBER
	= WIRE NUMBER
	= WIRE COLOR AND AWG
	= PLUG/RECP TERMINAL NUMBER
	= PUSH TO TEST PILOT LIGHT
	= WIRE EXTERNAL TO ENCLOSURE

REV	DESCRIPTION	DATE	BY
REVISION			

THIS DRAWING AND THE DESIGN SHOWN THEREIN IS THE PROPERTY OF BLASTRAC AND USE OR COPIES THEREOF CANNOT BE MADE WITHOUT WRITTEN CONSENT.

	13201 N. SANTA FE OKLAHOMA CITY, OK 73114 U.S.A.	DATE 1/04/12	DWG. P005084	NO. P005084	SCALE NTS	DRWN. ML
		BG-E 250 230 VOLT 1 PHASE 60 Hz. VER 2 SCHEMATIC			SHEET 2 OF 2	

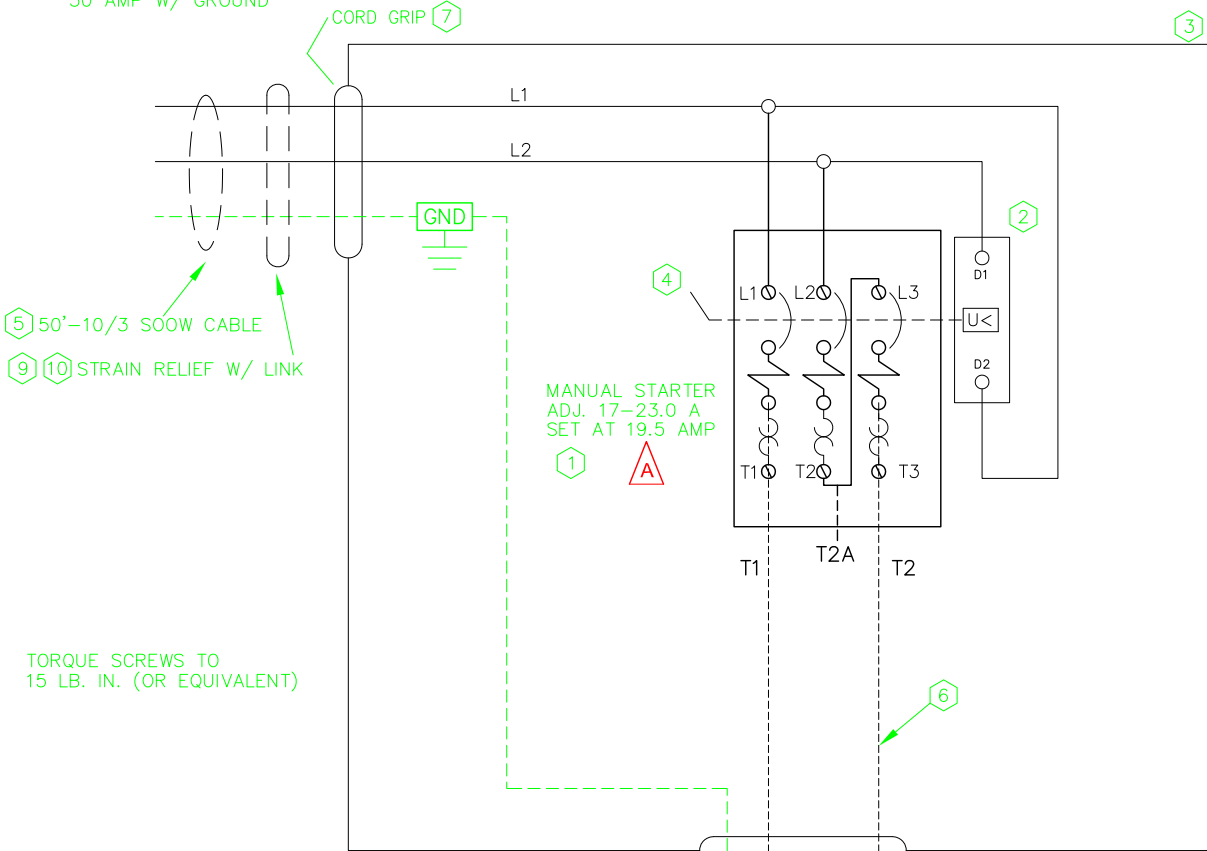


ITEM NO	QTY	P/N	DESCRIPTION
1	1	P003744	MOTOR PROTECTOR, 17-23 AMPS
2	1	P003745	UNDERVOLTAGE TRIP, 230 VAC 60 Hz (WAS GVAU226 - DETERMINATION TO USE LOWER VOLTAGE TRIP WAS MADE 11/29/2006 TO AVOID TRIPS CAUSED BY LOW VOLTAGE)
3	1	P003741	SURFACE MOUNT ENCLOSURE
4	1	P003740	MUSHROOM HEAD STOP BUTTON, TWIST RELEASE
5	50	P002254	WIRE, 10AWG, 3 CONDUCTOR TYPE SO
6	5	P003748	WIRE, 10/3 TYPE SOOW CORD - 5' SECTION, .655
7	2	P003739	CORD GRIP M25, .70 MAX DIA W/ LOCK NUT, ALTECH PN 5308943/7211977
8	1	P003097	CORD GRIP, 3/4" W/LOCK NUT, .35 - .7" CABLE DIA
9	1	714657	STRAIN RELIEF, DOUBLE EYELET, .75 CORD DIA
10	1	P000329	LINK, QUICK, 5/16, CLIP CLOSURE

BG-E 250 VER 2 CONTROL PANEL FOR 230V/60Hz 1 PHASE

TOTAL FLA	LARGEST MOTOR FLA @ SUPPLY VOLTAGE
19.5 AMPS	19.5 AMPS 230V
PHASE - 1	ENCLOSURE - TYPE 1
HERTZ - 60	MODEL- BG-E 250/1 VER 2
MAX. BRANCH CIRCUIT PROTECTION	30 AMPS
SHORT CIRCUIT CURRENT: 10 kA RMS SYMMETRICAL, 230 V MAXIMUM	

230V, SINGLE PHASE, 60 HZ
30 AMP W/ GROUND



TORQUE SCREWS TO
15 LB. IN. (OR EQUIVALENT)

GENERAL NOTES:

- A. BRANCH CIRCUIT PROTECTION MUST BE PROVIDED BY INSTALLER PER NEC 430-53(c)
- B. INSTALL ONLY COPPER FIELD CONDUCTORS RATED AT 75°C.
- C. THIS MACHINE MUST BE EFFECTIVELY GROUND FOR OPERATOR SAFETY. SEE NATIONAL ELECTRIC CODE ARTICLE 250.

SCHEMATIC SYMBOLS

XX	= TERMINAL BLOCK
⊗	= VOLTAGE SELECTOR SWITCH TERMINAL
○	= ELECTRICAL JUNCTION
⊙XX	= COMPONENT TERMINAL AND NUMBER
XX	= WIRE NUMBER
(X/X)	= WIRE COLOR AND AWG
<<(XX)<<	= PLUG/RECP TERMINAL NUMBER
PTT	= PUSH TO TEST PILOT LIGHT
---	= WIRE EXTERNAL TO ENCLOSURE

MOTOR
5.0 HP
230V- 19.5 AMP
1 PHASE

REV	DESCRIPTION	2/25/15	ML
		DATE	BY

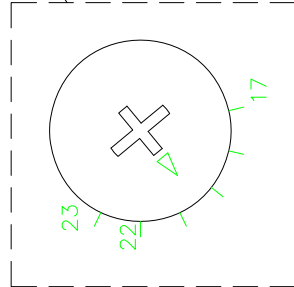
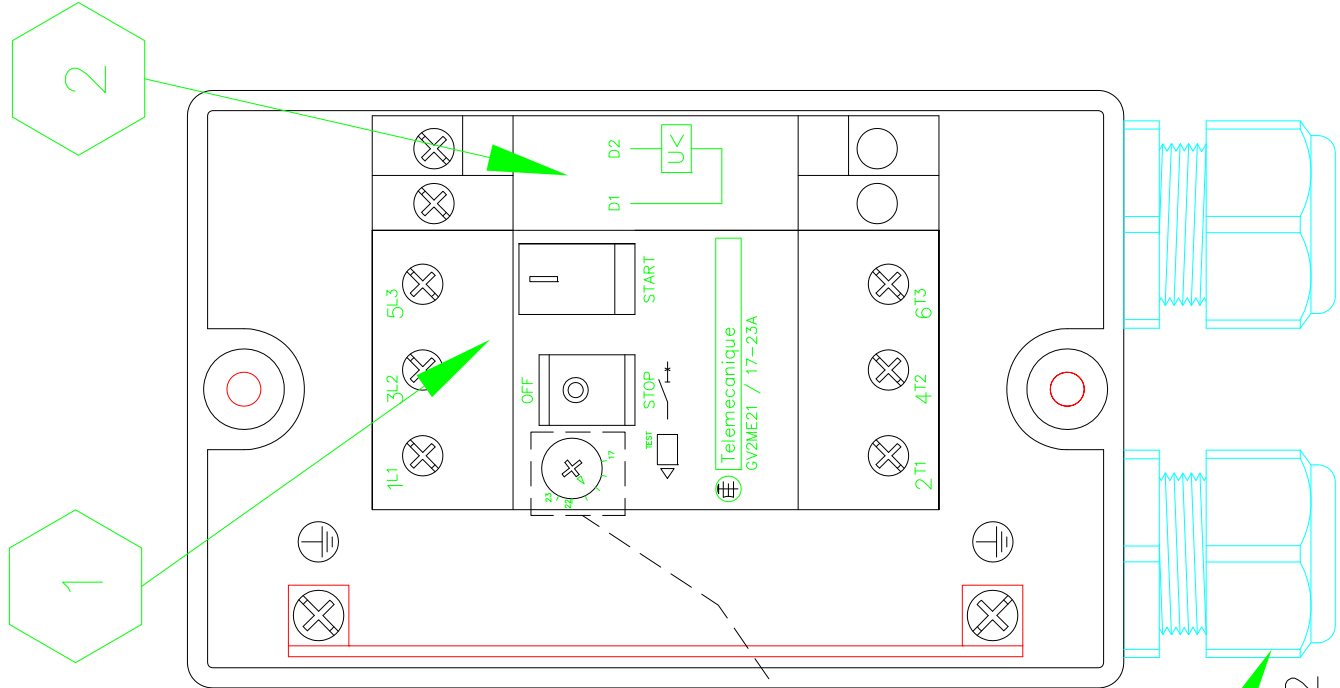
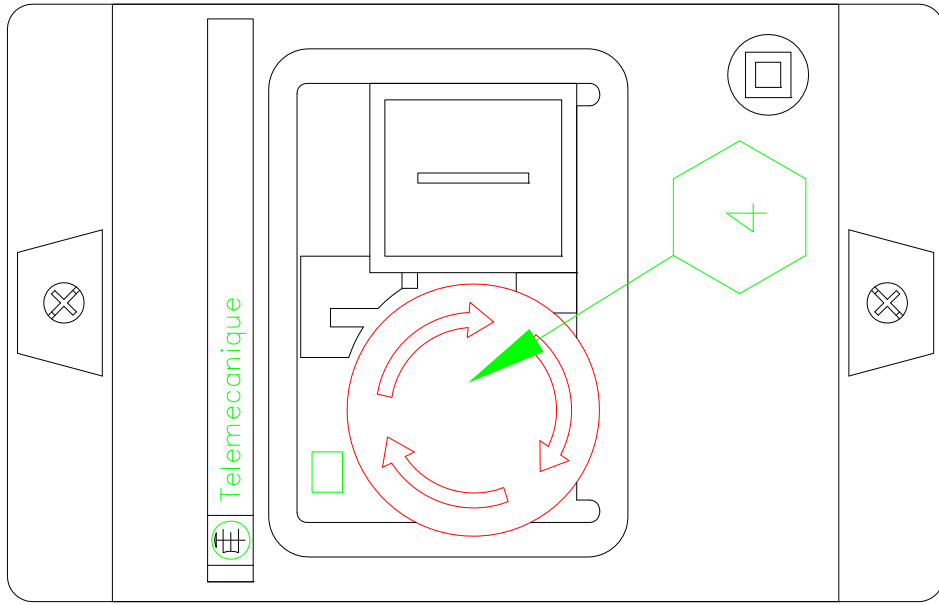
REVISION

THIS DRAWING AND THE DESIGN SHOWN THEREIN IS THE PROPERTY OF BLASTRAC AND USE OR COPIES THEREOF CANNOT BE MADE WITHOUT WRITTEN CONSENT.



13201 N. SANTA FE
OKLAHOMA CITY, OK 73114
U.S.A.

DATE	1/04/12	DWG.	P005084	NO.	P005084	SCALE	NTS	DRWN	ML
BG-E 250 230 VOLT 1 PHASE 60 Hz.						SHEET	2	OF	2
VER 2 SCHEMATIC						CAD GEN	P005084		



TYPICAL OF 2

REV	DESCRIPTION	DATE	BY
A	CHANGE SETTING OF FLA ON MOTOR CIRCUIT PROTECTOR DUE TO MOTOR CHANGE. CHANGE EFFECTIVE BEGINNING WITH SERIAL NUMBER 5084-****-28.	2/25/15	ML

REVISION

THIS DRAWING AND THE DESIGN SHOWN THEREIN IS THE PROPERTY OF BLASTRAC AND USE OR COPIES THEREOF CANNOT BE MADE WITHOUT WRITTEN CONSENT.

	13201 N. SANTA FE OKLAHOMA CITY, OK 73114 U.S.A.	DATE 1/04/12	DWG. P005084	NO. P005084	SCALE NTS	DRWN ML	
		BG-E 250 230 VOLT 1 PHASE 60HZ			SHEET 2		P005084
		VER 2 OVERLOAD DEVICE SETTINGS			OF 2		



13201 North Santa Fe Avenue • Oklahoma City, OK 73114 • Ph: 800-256-3440 • F: 405-478-8608 blastrac.com

Product Warranty

Standard Equipment Products:

Blastrac warrants its Blastrac Standard Equipment Products against defects in quality of material and workmanship, under normal and proper use for a period of **1 Year** from the date of delivery, as noted on the returned warranty registration card, or, in the case of **Rental Fleet Machines, 180 Days** from the date of assignment to Rental Fleet. This warranty is non-transferable and is extended to machines purchased and entered into the normal service of surface preparation by a recognized professional or qualified contractor. Blastrac makes this warranty only to the buyer who purchases the products directly from Blastrac or its Authorized Distributor. This warranty does not include expendable parts such as, but not limited to, blades, blast wheels, wear plates, liners, seals, and electrical components. All purchased parts utilized in the manufacture will be honored to the original manufacturer's specified warranty.

If the buyer does not return the warranty card or register the product online at www.blastrac.com within 30 days after taking delivery of Blastrac Standard Equipment Products, the warranty period is limited to 6 months from the date of delivery noted on shipping receipt.

Hand Tool Products:

Blastrac warrants its BLASTRAC Hand Tool Products, including hand grinders and accessories, against defects in material and workmanship under normal and proper use for a period of **90 days** from the date of delivery or, in the case of Rental Fleet Machines, from the date of assignment to a Rental Fleet. Blastrac makes this warranty only to the buyer who purchases the products directly from Blastrac or its authorized distributor. This warranty does not include expendable parts such as blades.

If the buyer does not return the warranty card, or register online at www.blastrac.com within 15 days after taking delivery of Blastrac Hand Tool Products, the warranty period is limited to 30 days from the date of delivery noted on shipping receipt.

WARRANTY TERMS AND CONDITIONS:

1. Blastrac's obligation under this warranty is limited to the replacement or repair, at Blastrac's option, of products and does not include, labor, the cost of transportation, loss of operating time, or normal maintenance services.
2. This warranty does not apply to failure occurring as a result of abuse, misuse, negligence, corrosion, erosion, normal wear and tear, alterations or modifications made to products without the express written consent of Blastrac.
3. The buyer must submit all warranty claims no later than thirty (30) days after buyer becomes aware of the basis for any such claim, or should have become aware of the basis for any such claim in the exercise of reasonable diligence.

To return parts for warranty consideration, please call Blastrac Customer Service at **800-256-3440**. Your customer service representative will obtain the necessary information to complete the Blastrac Returned Merchandise Authorization (RMA) Form. Blastrac will then send the RMA form to the customer authorizing the return of the parts for warranty evaluation. The parts must be received within sixty (60) days following the RMA origination date or the warranty claim will be denied. Once the parts are received they will be evaluated for warranty.

If the customer cannot wait for the evaluation/replacement of the parts during this process, the customer must issue a new purchase order to Blastrac for the replacement parts before they can be shipped. Once the evaluation process is complete and parts are deemed a valid warranty claim, a credit will be issued against this invoice.

4. The buyer may not return Blastrac products without written authorization to do so through a Blastrac RMA.

5. Blastrac reserves the right to inspect and determine the scope of its warranty responsibilities for any returned Blastrac products.

6. Blastrac makes no warranty with respect to accessories it does not manufacture, including but not limited to, engines, motors, batteries, tires and all other parts. See component manufacture warranty.

7. Blastrac reserves the right to make product changes or improvements without prior notice and without undertaking any obligation for such changes or improvements on previously sold products.

8. The above warranty conditions can only be altered by Blastrac. Blastrac must confirm alterations in writing for each specific transaction.

9. Blastrac reserves the right to modify this warranty for used or demo products on an individual transaction basis. Blastrac will include warranty modifications on its invoices for used or demo products.

10. BLASTRAC DOES NOT AUTHORIZE ANY PERSON, REPRESENTATIVE, SERVICE OR SALES OUTLET TO MAKE ANY WARRANTY DIFFERENT FROM THIS PRODUCT WARRANTY.

11. EXCEPT FOR ITS PRODUCT REPAIR OR REPLACEMENT OBLGATIONS DESCRIBED IN THIS PRODUCT WARRANTY, UNDER NO CIRCUMSTANCES SHALL BLASTRAC BE LIABLE TO THE BUYER, OR ANY OTHER PERSON, FOR ANY DIRECT, INCIDENTAL, OR CONSEQUENTIAL DAMAGES RESULTING FROM THE USE OF THE BLASTRAC PRODUCT, OR FOR ANY SPECIAL OR CONSEQUENTIAL DAMAGES OF ANY CHARACTER, INCLUDING WITHOUT LIMITATIONS, DAMAGES FOR ANY LOSS OF GOODWILL, WORK STOPPAGE, OR ANY AND ALL OTHER COMMERCIAL DAMAGES OR LOSSES.

12. BLASTRAC MAKES NO OTHER PRODUCT WARRANTIES, EXPRESS OR IMPLIED, INCLUDING, BUT NOT LIMITED TO, THE IMPLIED WARRANTIES OF MERCHANTABILITY AND FITNESS FOR A PARTICULAR PURPOSE.



IMPORTANT!

TO THE DELIVERING DISTRIBUTOR OR END USER

To ensure the proper warranty coverage is extended to the owner of this machine, fill in the necessary information below **COMPLETELY** and **ACCURATELY** and retain for your records. **Go to www.blastrac.com and register online.** Click on the Register icon in the left column of the homepage, and fill out the product registration form with the same information that will be recorded here.

The warranty period will start upon the delivery date of the machine.

The distributor or the end user must provide the machine warranty information when the machine is delivered. Registration of the machine will extend the warranty period from the recorded delivery date entered with product registration. **Failure to comply will make any and all warranties on the equipment void after 6 months.**

OWNER/END USER'S REFERENCE INFORMATION

Delivery Date _____	Machine Model No. _____
Delivering Distributor's Name and Address _____ _____ _____ _____	Machine Serial No. _____ Modifications _____ _____ _____ _____
Signature of Delivering Distributor's Representative _____	_____

Blastrac is a registered trademark of Blastrac,NA
Fold and Detach Here if Mailing

Warranty Registration

IMPORTANT! To ensure that your Blastrac® machine is covered under warranty, please provide the information recorded here by registering online at blastrac.com, or complete this page and fax to 866-485-1046, or if you prefer, detach and mail to:

Blastrac, 13201 North Santa Fe Avenue, Oklahoma City, OK 73114-9901

(Please print legibly)

Company _____
Address _____
City, State, & Zip _____
Telephone No. _____ Contact Person _____
Date of Purchase _____ Date Received _____
Machine Model No. _____ Serial No. _____
Distributor Name _____
End User Name _____
End User E-mail _____



Contact

Blastrac Canada
5125 Timberlea Blvd.
Mississauga, Ontario, Canada L4W 2S3
Tel: 1-866-669-6643
Fax: 866-669-6644
www.blastrac.ca

