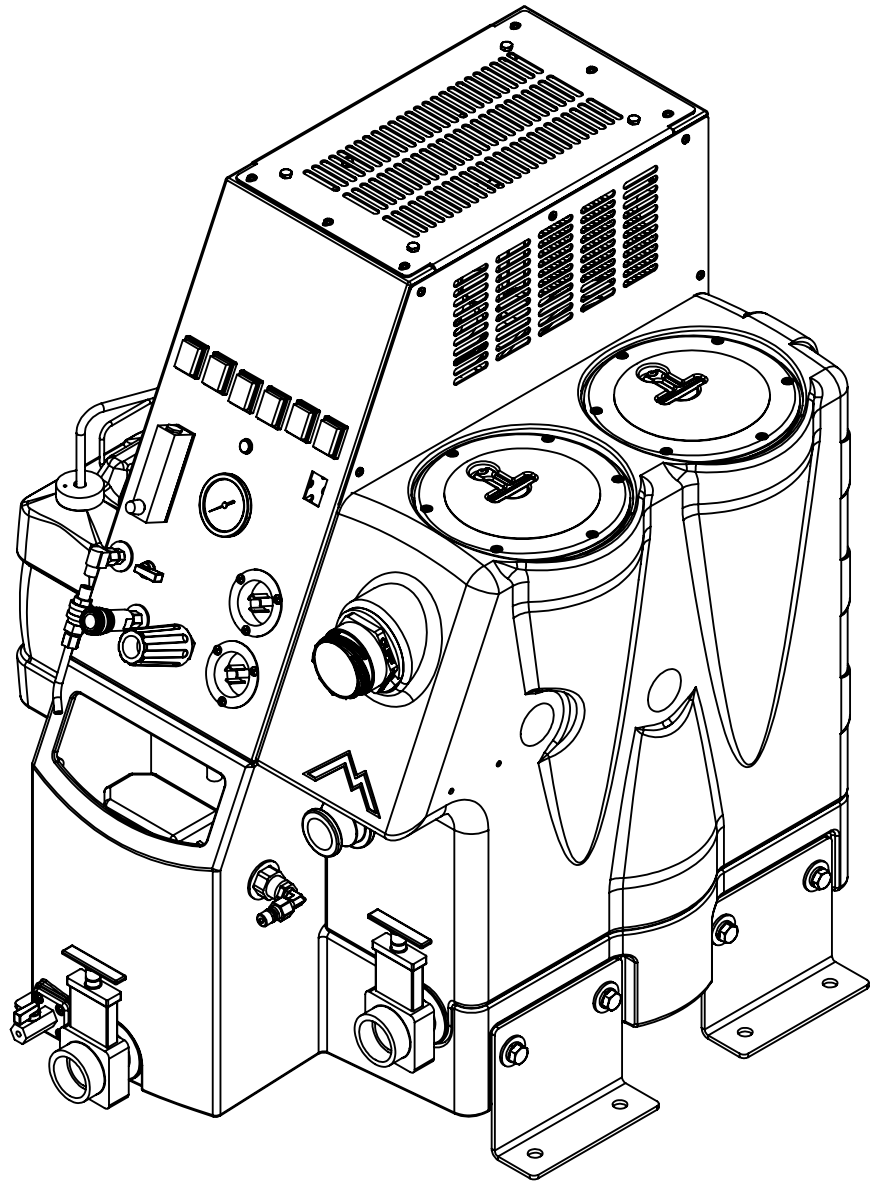


ITEM NO.	PART NO.	DESCRIPTION	QTY.
1	H230	screw, 10-32 x 1/2" phil pan head, s/s	34
2	P505	ETM Sol Tank / Chassis	1
3	H254	washer, axle, cut 1/2" id	8
4	H173	washer, lock, 1/2 med split, steel zinc	8
5	H174	bolt, 1/2-13 x 3/4, c/s, hex head	8
6	H541A	valve, float, autofill	1
7	H097	washer, 1"ID x 1.5"OD, flat, s/s	2
8	B182	adapter, 3/4" fgh x 1/2" fpt	1
9	B210	bushing, brass, 1/2"mpt x 3/8" fpt, hex	1
10	B652	elbow, 90 deg, 3/8"mpt x 1/4"mpt	3
11	B101	qd, brass, 1/4" m	1
12	H523	bracket, mounting, tank, truckmount	4
13	H225	valve, drain, 1-1/2"	2
14	AH103	hose, pulse, 3/8" x 14.5", 1/4 FSW x 1/4 FPT	1
15	B127	plug, brass, 1/4"mpt, hex	2
16	PH634-24	sol hose, 1/4", silicone braided, clear	1
17	B109	barb, 1/4" barb x 1/4" mpt	3
18	C359C	regulator, 1000 psi	1
19	B135	tee, 1/4" mpt x 1/4" mpt x 1/4" mpt	2
20	B142A	coupling, brass, 1/4" fpt x 1/4" fpt	5
21	B136	elbow, brass, 90 deg, 1/4" mpt x 1/4" mpt	3
22	B103	elbow, 90 deg street, 1/4"mpt x 1/4" fpt	9
23	H876	washer, 1/2", flat	4
24	B111	adapter, brass, extender, 1/4" mpt x 1/4" fpt, hex	2
25	B102	quick disconnect, 1/4" fqd x 1/4" fpt	1
26	PH634-36	sol hose, 1/4", silicone braided, clear	1
27	B110	adapter, brass, 1/4" sw barb x 1/4" fpt, w/gasket	3
28	B259	qd, brass, 1/4" fqd x mpt	1
29	B260A	quick disconnect, 1/4" mqd x mpt, open-spray	4
30	B107	nipple, hex, 1/4"mpt x 1/4"mpt	4
31	B656B	valve, ball, 1/4" fpt x 1/4" fpt, s/s	2
32	H325	flow meter, electric truckmount	1
33	G069	gasket, flow meter	1
34	B129	nipple, hex, 1/8" mpt x 1/8" mpt	2
35	H308D	gauge, pressure, 2000 PSI	1
36	B130	45 deg, street elbow, brass, 1/4" male NPTF	1
37	E512B	light, indicator, blue	1
38	E515	switch, rocker, 2 position	6
39	H012C	instrument panel, ETM Plus	1
40	E360	flanged male inlet recaptacle, 230V, 20A	4
41	H273	nut, kep, #10-32 zinc	6
42	H203	bolt, 1/4-20 x 1-1/4" hex head, s/s	2
43	H213	washer, 1/4" lock, s/s	7
44	H210	washer, 1/4" flat, s/s	2
45	H196	support, pump, truckmount	1
46	H211	washer, 1/4" id x 1" od, flat, s/s	2
47	H201	bolt, 1/4-20 x 1/2" hex head, s/s	2
48	B119	filter, strainer, 1/4"	1
49	B644	barb, 1/2" barb x 1/4" mpt	1
50	B173	ferrule, 1/2", brass	1
51	PH615-18	sol hose, 1/2", silicone braided, clear	1
52	AH203	hose, pulse, 3/8" x 34", (OAL)	1
53	B259A	qd, brass, 1/4" fqd x fpt	3
54	PH634	sol hose, 1/4", silicone braided, clear	1
55	B235	adapter, brass, 3/8" barb x 1/4" fsw	1
56	B646	adapter, 1/4" mpt x 1/8" fpt	1
57	B104	bushing, brass, 1/4" mpt x 1/8" f	1
58	B143	street elbow, 90 degrees, 1/8"	1
59	C359B	pump, 1200 psi PumpTec	1
60	E373	level switch, vacuum shut-off, rear threads	3
61	H207	cam & grovve fitting 1-1/2", male	1
62	H132V	Cuff-Lynx, starter port fitting	1

ITEM NO.	PART NO.	DESCRIPTION	QTY.
63	H073	coupler, 2.5" dia x 9.5", ss	1
64	H217	clamp, hose, 2-1/4 dia	6
65	A926	elbow, inlet assembly 2"	1
66	B113	tee, 1/4" fpt x 1/4" fpt x 1/4" fpt	1
67	PH628-11	vac hose, 2", black, wire reinforced	1
68	C347	vac motor, lx, hybrid, 173 cfm, 120v	1
69	H469	bracket, vac motor, 6.6"	1
70	C348	vac motor, lx, hybrid, w/inlet tube, 173 cfm, 120v	2
71	H096	bolt, hex, 1/4-20 x 4", zinc Finish	3
72	H503	vac support, 3 stage, 3.25", no thrds	3
73	PH628-11	vac hose, 2", black, wire reinforced	1
74	PH633-1	pipe, pvc, 1-1/2"	1
75	G097	filter, screen mesh, 1.90" dia	1
76	G003	filter, foam, 2", vac stack, 1/2"	1
77	PH633-2	pipe, pvc, 1-1/2"	1
78	H244	adapter, pvc, 1-1/2" fms x fmpt	1
79	P520	adapter, 1.5" mpt pvc	1
80	P508	deflector, LX \ ETM	1
81	G091	gasket, 7", vac lid	2
82	G090	lid, vac tank, clear, 7"	2
83	H304	screw, #8 x 5/8 phil oval, s/s	15
84	P506	ETM Vac Tank	1
85	H396	barb, 1-1/2" x 1-1/2" fpt, pump out	1
86	H300	cuff, hose, 1-1/2 x 1-1/2, wire	1
87	PH627-20	vac hose, 1-1/2", black, wire reinforced	1
88	P686	swing check valve, pump out	1
89	H009	side panel, truckmount	1
90	P534	bottle, 7 quart, w/ caps	1
91	H456B	cap (only) w/ hole	1
92	H547	hanger, wire for injection sprayer	1
93	B117	strainer, with check, chemical injector	1
94	PH634-25	sol hose, 1/4", silicone braided, clear	1
95	G036	cap, 2.5" threaded, tethered	1
96	PH628-11	vac hose, 2", black, wire reinforced	1
97	H768	bolt, 1/4-20 x 3/4" serrated hex flange, zinc	3
98	H471	standoff, motor, 6"	3
99	H062	vac mounting plate, ETM	1
100	H202	bolt, 1/4-20 x 3/4" hex head, s/s	7
101	H010	top panel, truckmount	1
102	H216	nut, lock, 1/4-20, nylon insert, s/s	4
103	E564	controller, circuit light, audible	1
104	H001	side panel, small, truckmount	1
105	H011	back panel, truckmount	1
106	C381	pump out, 3.3 gpm, 115v	1
107	H124V	Cuff-Lynx, 2" fem cuff x 2" male thread starter cuff, vinyl	2
108	PH634-33	sol hose, 1/4", silicone braided, clear	1
109	H484	plate, mounting, QD	1

ITEMS NOT SHOWN		
PART NO.	DESCRIPTION	QTY.
A959	harness, electrical	1
E351	power cord, ext, 50', 12/3, twist lock	2
H106	Cuff-Lynx, 2" hose x 2.5" female	1
H107	Cuff-Lynx 2.5" hose x 2.5" f swivel	1
H294	vac hose, 1-1/2" x 25' SW	1
H205	cam & groove fitting 1-1/2", female w/ lock	1
5003	electrical adaptor ETM - 3 prong	1
5004	electrical adaptor ETM - 4 prong	1
ADM-ETM	ETM manual	1



	NAME	DATE	<div> <div>MYTEE</div> <div>PRODUCTS, INC.</div> <div>858-679-1191</div> </div>	
DRAWN	M.LaBarbera	12/2019	TITLE:	
CHECKED			ETM	
COMMENTS:				
<p>PROPRIETARY AND CONFIDENTIAL</p> <p>THE INFORMATION CONTAINED IN THIS DRAWING IS THE SOLE PROPERTY OF MYTEE PRODUCTS, INC. ANY REPRODUCTION IN PART OR AS A WHOLE WITHOUT THE WRITTEN PERMISSION OF MYTEE PRODUCTS, INC. IS PROHIBITED.</p>				
SIZE		DWG. NO.		REV
C		ETM-LX-PLUS		OD
SCALE: 1:8		DO NOT SCALE DRAWING		SHEET 1 OF 5

F

E

D

C

B

A

F

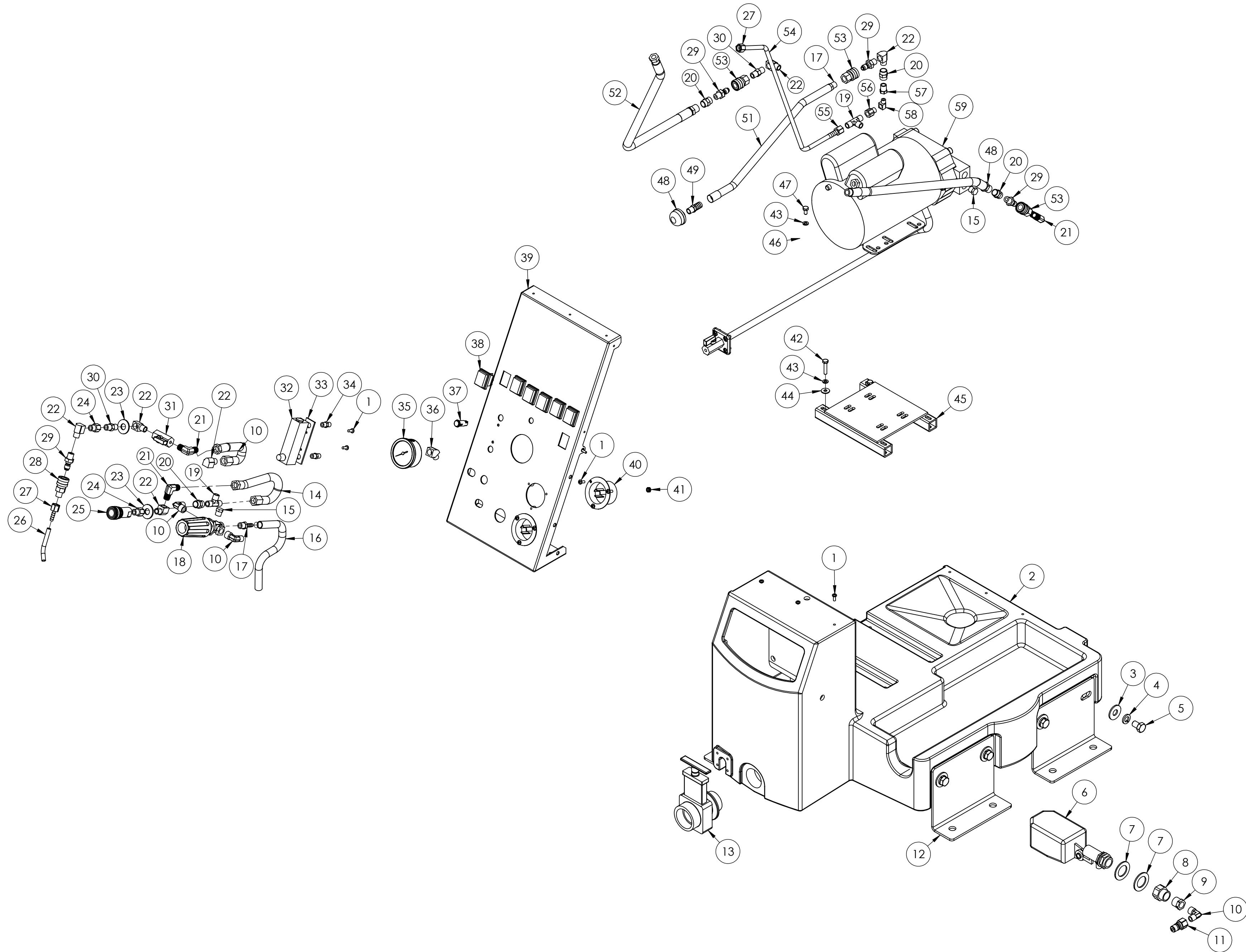
E

D

C

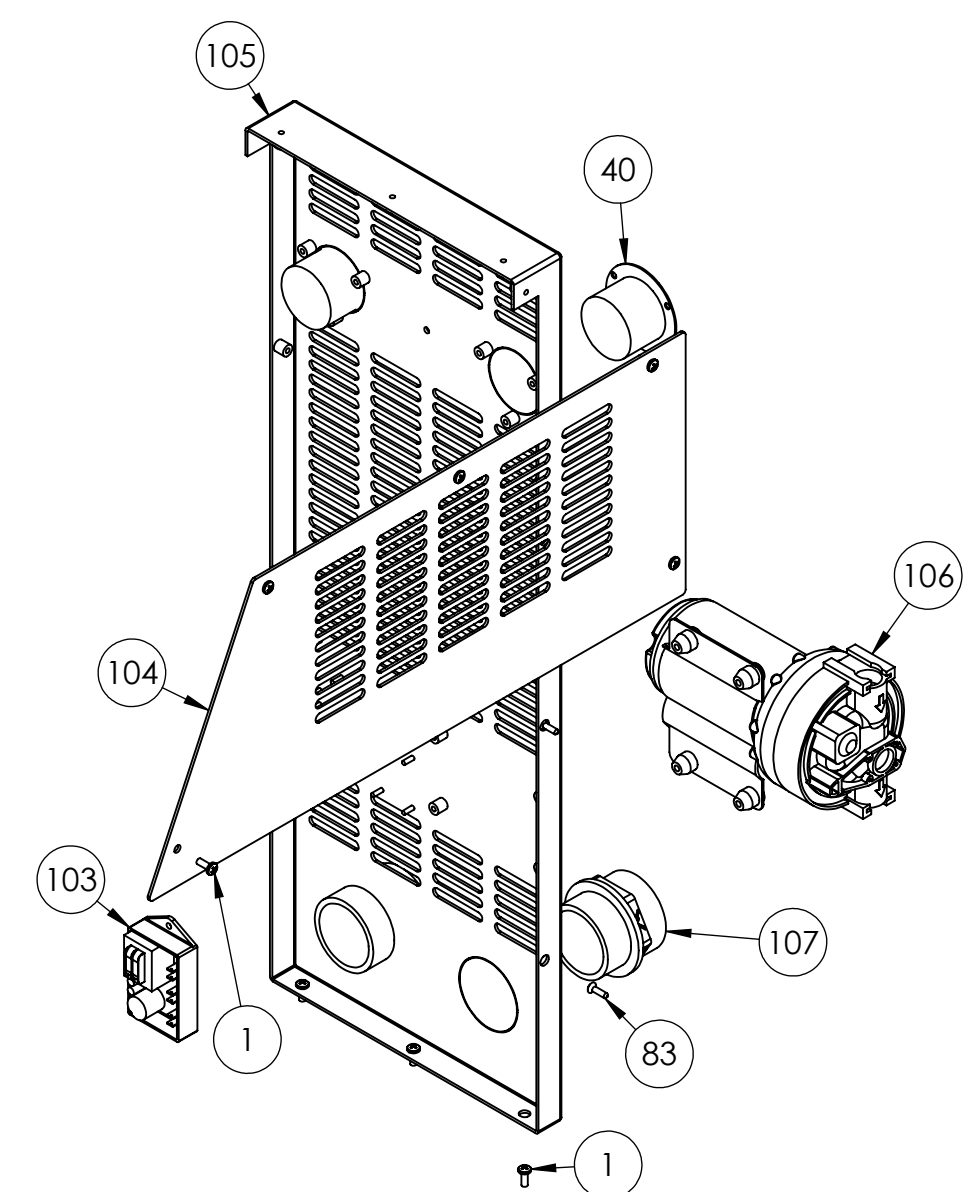
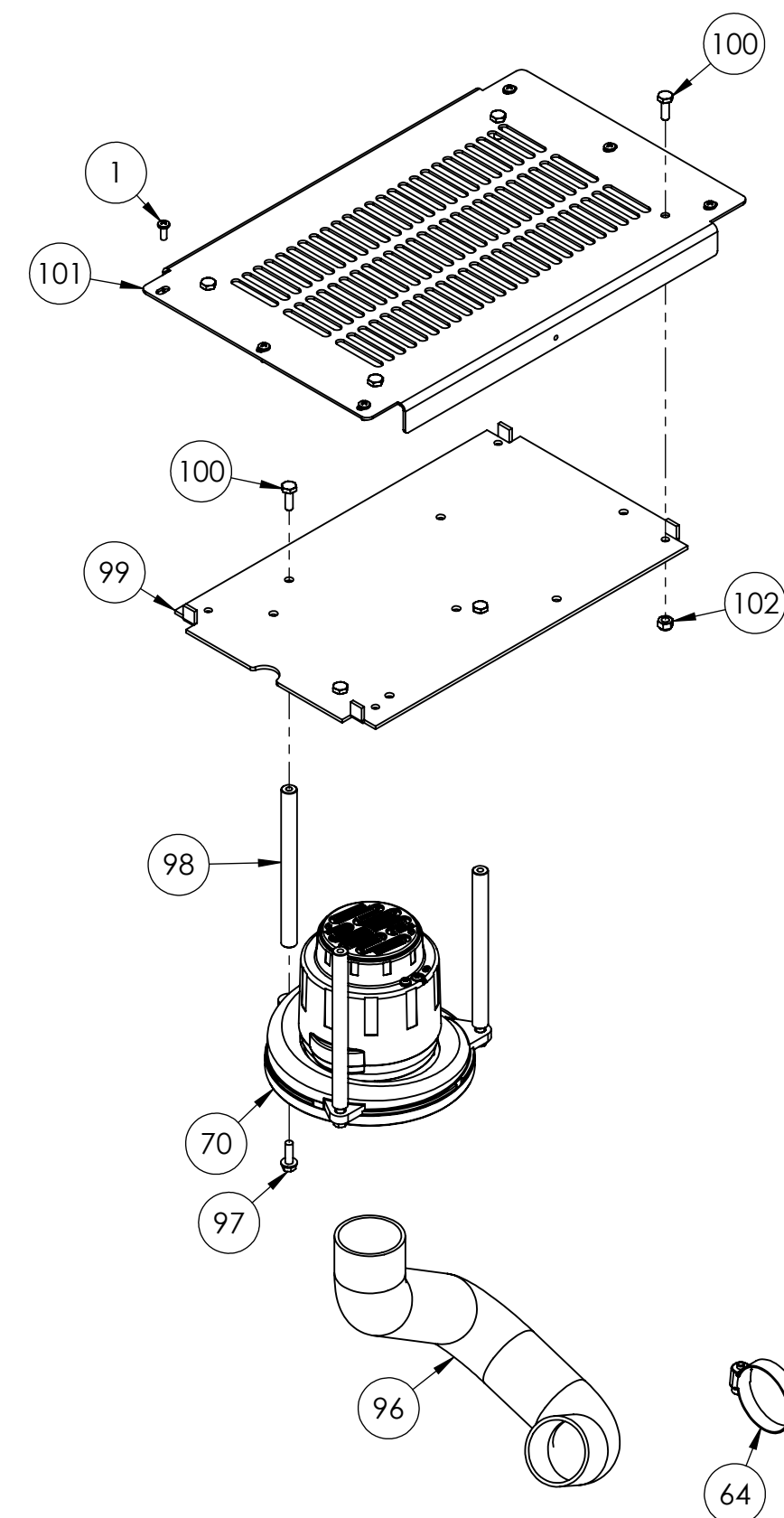
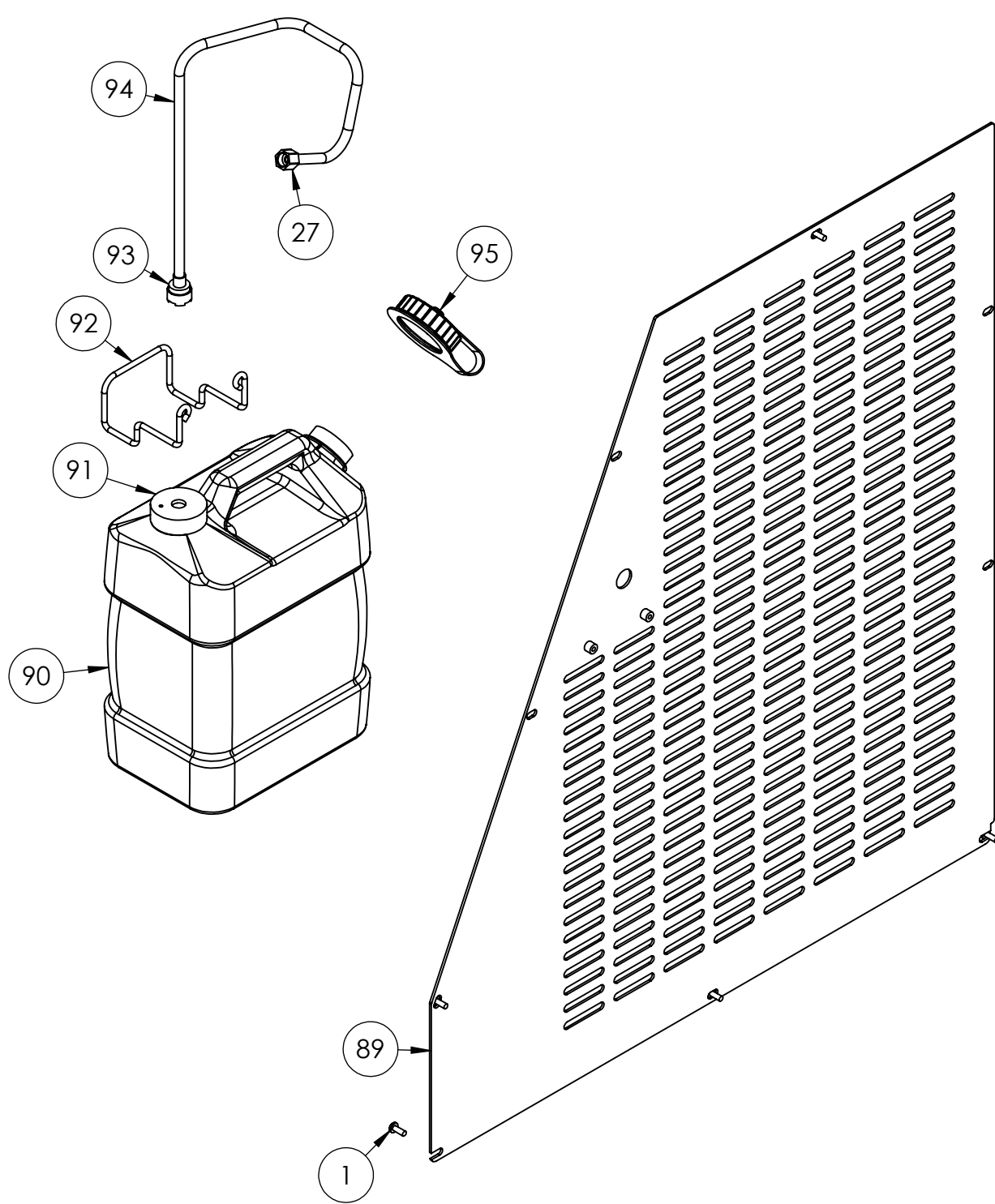
B

A



	NAME	DATE	MYTEE PRODUCTS, INC. 858-679-1191	
DRAWN	M.LaBarbera	12/2019		
CHECKED			TITLE:	
COMMENTS:			ETM	
PROPRIETARY AND CONFIDENTIAL THE INFORMATION CONTAINED IN THIS DRAWING IS THE SOLE PROPERTY OF MYTEE PRODUCTS, INC. ANY REPRODUCTION IN PART OR AS A WHOLE WITHOUT THE WRITTEN PERMISSION OF MYTEE PRODUCTS, INC. IS PROHIBITED.			SIZE	DWG. NO.
			C	ETM-LX-PLUS
			SCALE: 1:8	REV
			DO NOT SCALE DRAWING	OD
			SHEET 2 OF 5	

F
E
D
C
B
A



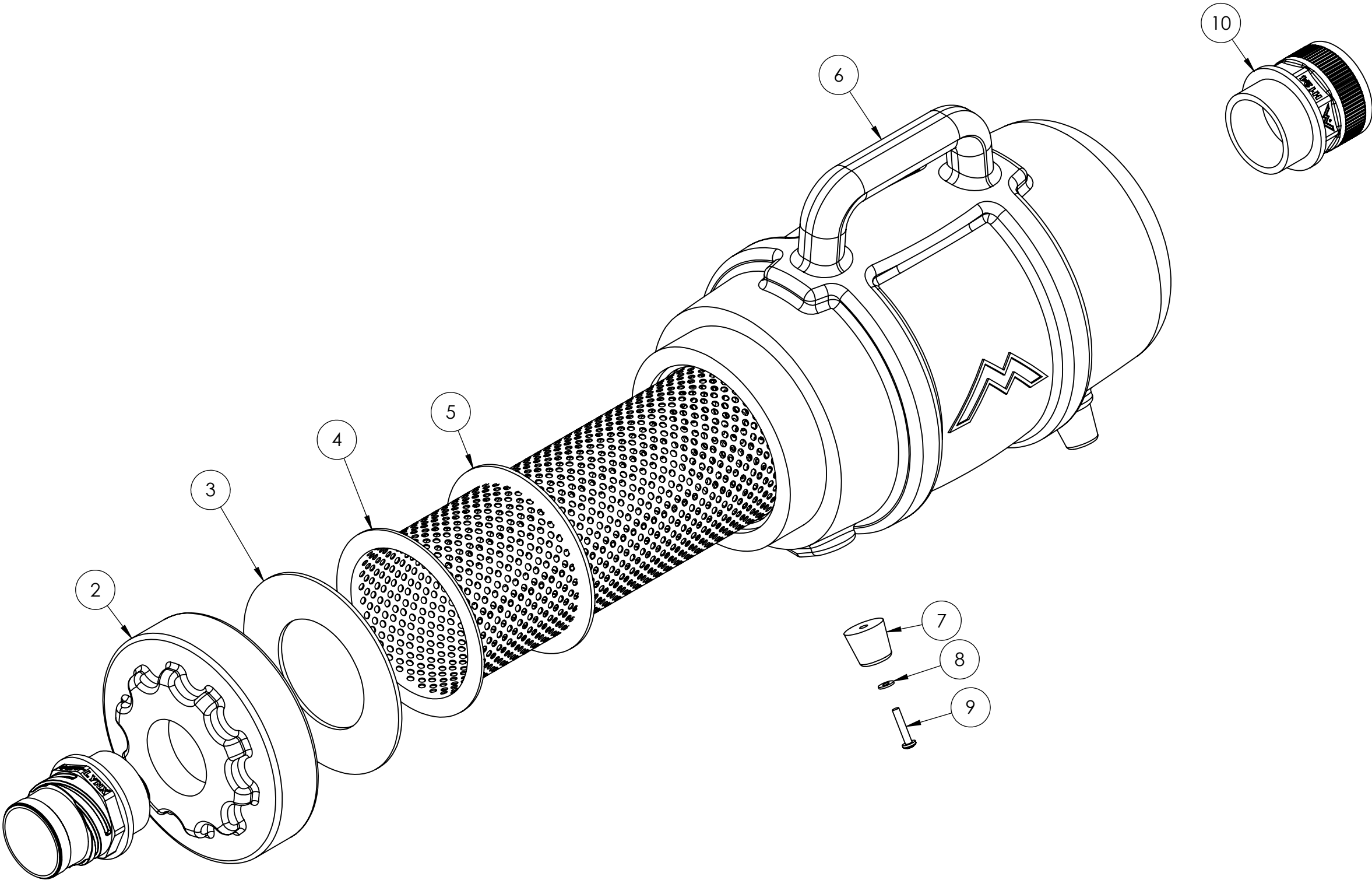
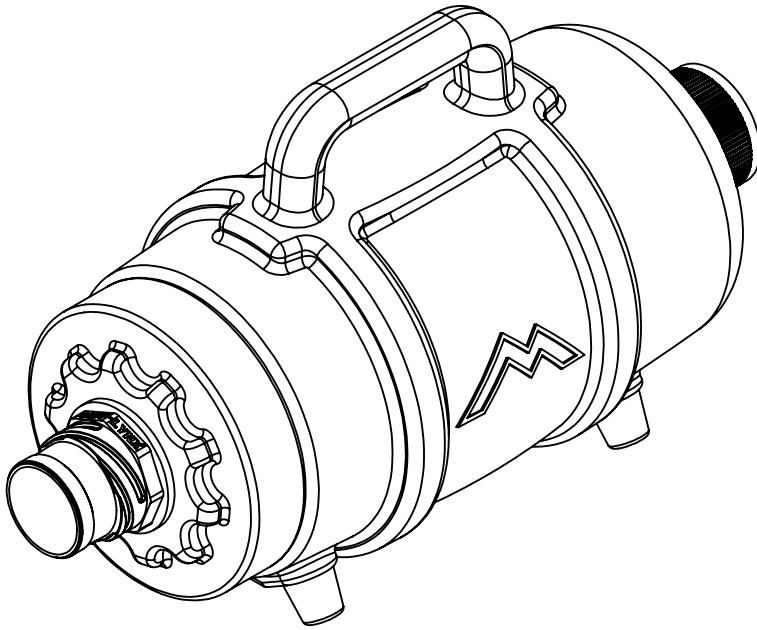
	NAME	DATE	MYTEE PRODUCTS, INC. 858-679-1191	
DRAWN	M.LaBarbera	12/2019		
CHECKED			TITLE:	
COMMENTS:			ETM	
PROPRIETARY AND CONFIDENTIAL THE INFORMATION CONTAINED IN THIS DRAWING IS THE SOLE PROPERTY OF MYTEE PRODUCTS, INC. ANY REPRODUCTION IN PART OR AS A WHOLE WITHOUT THE WRITTEN PERMISSION OF MYTEE PRODUCTS, INC. IS PROHIBITED.			SIZE	REV
			DWG. NO.	OD
			SCALE: 1:8	SHEET 4 OF 5

F
E
D
C
B
A

ITEM NO.	PART NO.	DESCRIPTION	QTY.
1	H135	Cuff-Lynx, 2" m cuff x 2" mpt	1
2	P561	cap, 6", threaded, w/ 2" npt	1
3	G031	gasket, 3.25" i.d. x 5.88" o.d.	1
4	H359	basket, strainer, 4.5 DIA x 12.5	1
5	G084	gasket, 4.55" x 5.5"	1
6	P563A	body, lint hog, new style	1
7	G211	rubber feet, 1-1/8" bas diag, 1" height	4
8	H612	washer, 8 flat, black ox	4
9	H231	screw, 10-32 x 1" phil pan head, s/s	4
10	H124	Cuff-Lynx, 2" mpt x 2" female cuff	1

ACCESSORIES NOT SHOWN

PART NO.	DESCRIPTION	QTY.
ADM-F200	manual, lint hog, QR codes	1
G008	SEE PAK NUMBER black piglet filters - bag of 25	1
H110	Cuff-Lynx, 2" hose x 2" f swivel	1
H136	Cuff-Lynx, 2" hose x 2" male swivel	1
H141	Cuff-Lynx, 2" hose to 1.5" reducer	1



	NAME	DATE	MYTEE PRODUCTS, INC. 858-679-1191		
DRAWN	M. LaBarbera	5/25/11	TITLE:		
CHECKED					
PROPRIETARY AND CONFIDENTIAL THE INFORMATION CONTAINED IN THIS DRAWING IS THE SOLE PROPERTY OF MYTEE PRODUCTS, INC. ANY REPRODUCTION IN PART OR AS A WHOLE WITHOUT THE WRITTEN PERMISSION OF MYTEE PRODUCTS, INC. IS PROHIBITED.			Lint Hog		
			SIZE	DWG. NO.	REV
			C	ETM-LX-PLUS	OD
			SCALE: 1:3	DO NOT SCALE DRAWING	SHEET 5 OF 5