



Models- 8704B - Silver Touch "Quiet"
Commercial Vacuum

Page 2	Product Information
Page 3	Product Dimensions
Page 4	Specifications
Page 5	Important Safety Instructions
Page 6-8	Installation
Page 9	Operating
Page 9	Maintenance
Page 10	Troubleshooting
Page 11-13	Parts List
Page 14	Wiring Diagram



PRODUCT INFORMATION

Please take a moment to fill out the information below in order to aid us with any future sales or service inquiries. Model number and serial number information can be found on the serial tag located inside the control box and/or on the lower exterior of the can. Key number can be found on the tag that comes attached to the keys. There may be more than one key number depending on unit.

Please keep this information with your records.

MODEL#: _____

SERIAL#: _____

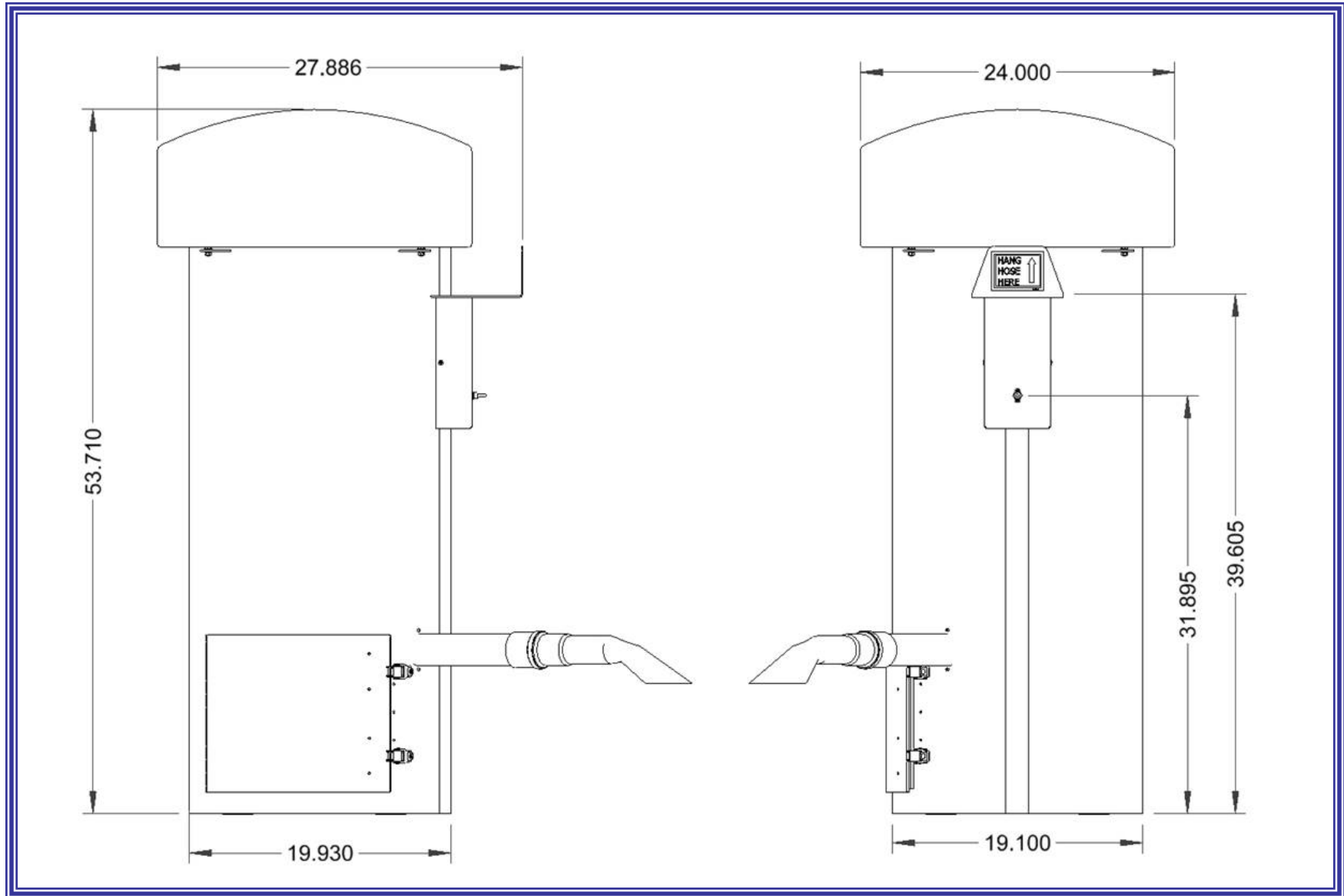
KEY NUMBER(S): _____

DATE PURCHASED: _____

DISTRIBUTOR: _____

**J.E. Adams Industries
1025 63rd Ave. S.W.
Cedar Rapids, IA 52404
1-800-553-8861
www.jeadams.com**

PRODUCT DIMENSIONS



Specifications

Unit specifications:

Voltage: 120vac, 60hz
Amperage: (1) 20 amp service is required for this unit.
Weight: 110-135 lbs with pallet attached.

Vac specifications:

Motors: (2) 120vac vacuum motors.
Fuses: (2) 10 amp inline fuses.

Duty cycle time 4 minutes on, 4 minutes off.

NOTE: "UNIT INTENDED FOR COMMECIAL USE ONLY"

IMPORTANT SAFETY INSTRUCTIONS

When using an electrical appliance, basic precautions should always be followed, including the following:

READ ALL INSTRUCTIONS BEFORE USING (THIS APPLIANCE)

WARNING – To reduce the risk of fire, electric shock, or injury:



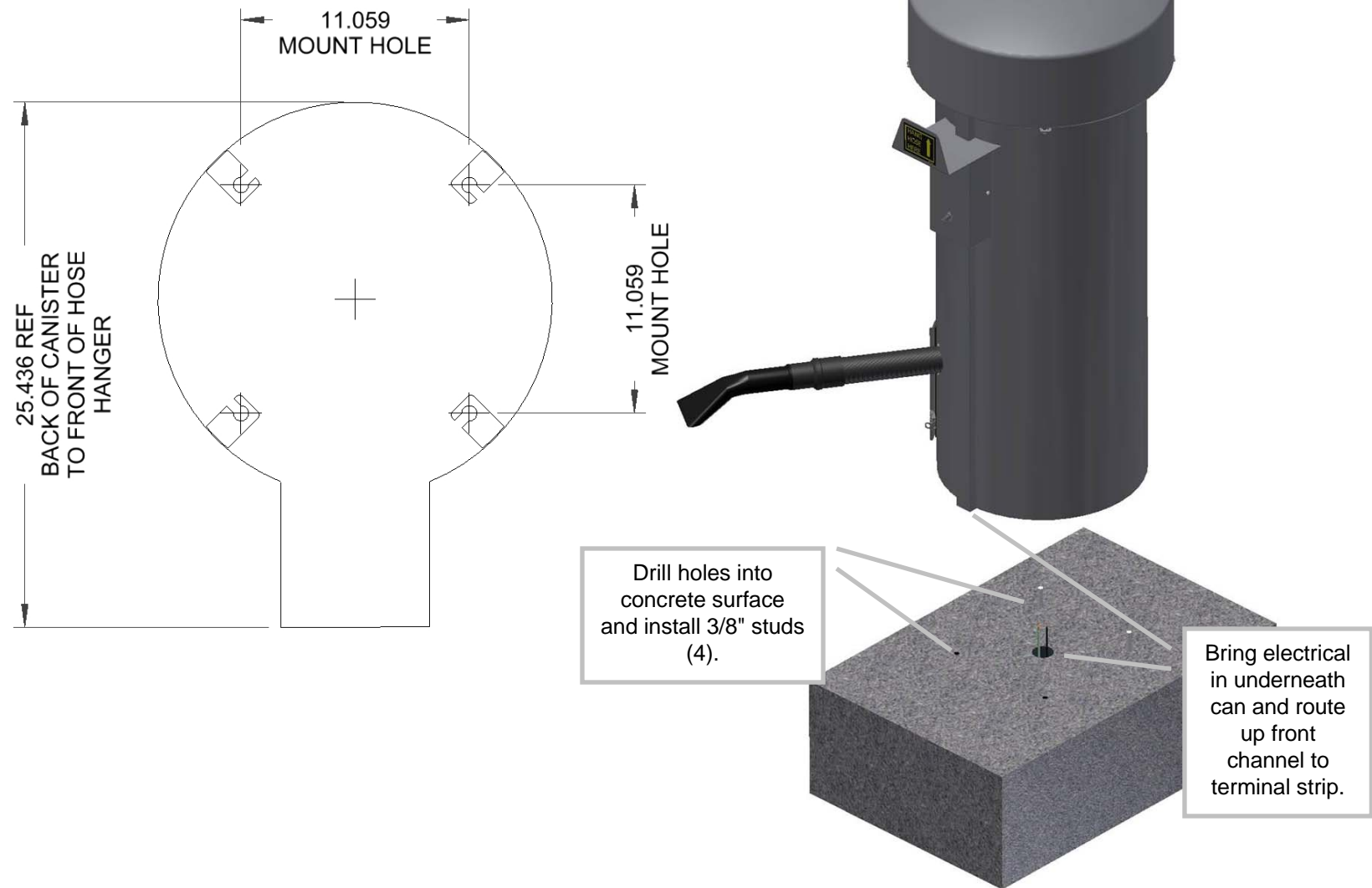
- Do not use on wet surfaces.
- Use only as described in manual. Use only manufactures recommended attachments.
- Do not allow to be used as a toy. Close attention is necessary when used by or near children.
- Do not put any object into openings. Do not use with any opening blocked; keep free of dust, lint, hair and anything that may reduce air flow.
- Keep hair, loose clothing, fingers, and all parts of body away from openings and moving parts.
- Do not use to pick up flammable or combustible liquids, such as gasoline, or use in areas where they may be present.
- Do not pick up anything that is burning or smoking, such as cigarettes, matches, or hot ashes.
- Do not use without dust bag and/or filters in place.

SAVE THESE INSTRUCTIONS

- **Installation Instructions:**
- Determine location to mount unit (“**DANGER**” “**THIS EQUIPMENT INCORPORATES PARTS SUCH AS SWITCHES, MOTORS, OR THE LIKE THAT TEND TO PRODUCE ARCS OR SPARKS THAT CAN CAUSE AN EXPLOSION. WHEN LOCATED IN GASOLINE-DISPENSING AND SERVICE STATIONS INSTALL AND USE AT LEAST 20 FEET (6 M) HORIZONTALLY FROM THE EXTERIOR ENCLOSURE OF ANY DISPENSING PUMP AND AT LEAST 18 INCHES (450 MM) ABOVE A DRIVEWAY OR GROUND LEVEL.**”
- Run electrical service to that location (*NOTE UNIT HAS WIRE PROVIDED UNDERNEATH TO CONNECT INCOMING POWER SUPPLY*)
- **Grounding Instructions:** This appliance must be connected to a grounded metal, permanent wiring system; or an equipment-grounding conductor must be run with the circuit conductors and connected to the equipment-grounding terminal or lead on the appliance.
- All local and national electric codes must be followed for installation and use.
- Licensed electricians are recommended for installation.

INSTALLATION:

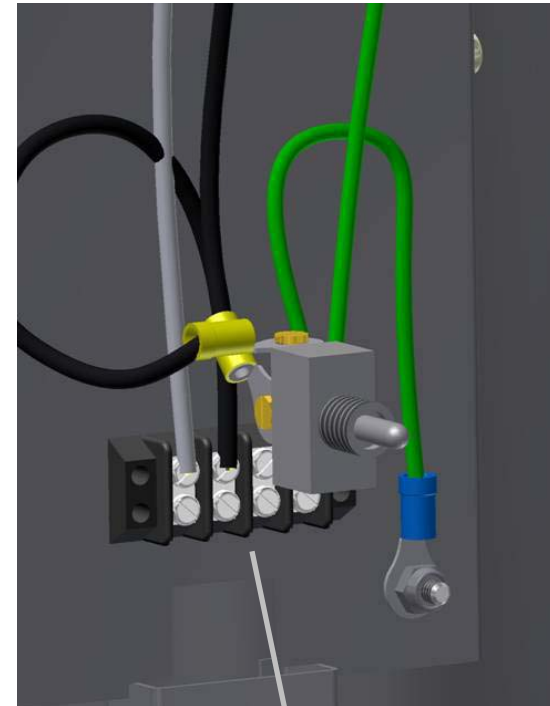
PLAN VIEW



Incoming wire ties
into factory wire
underneath
removable cover.

When mounting,
allow access to
cleanout doors.

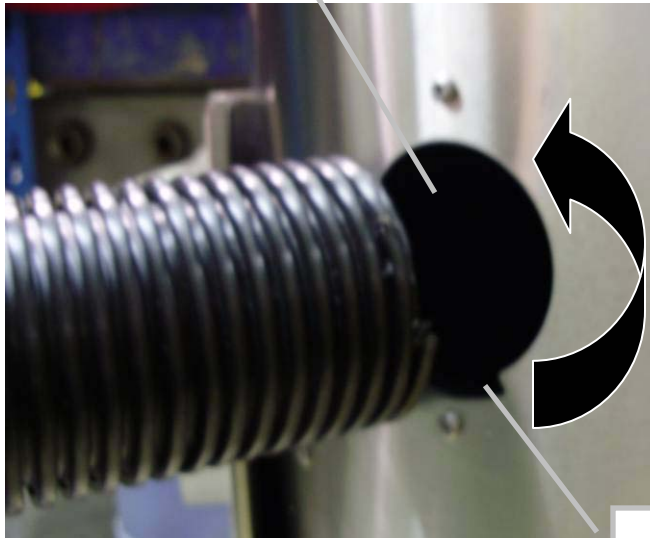
Bring incoming power
up through the
service channel.



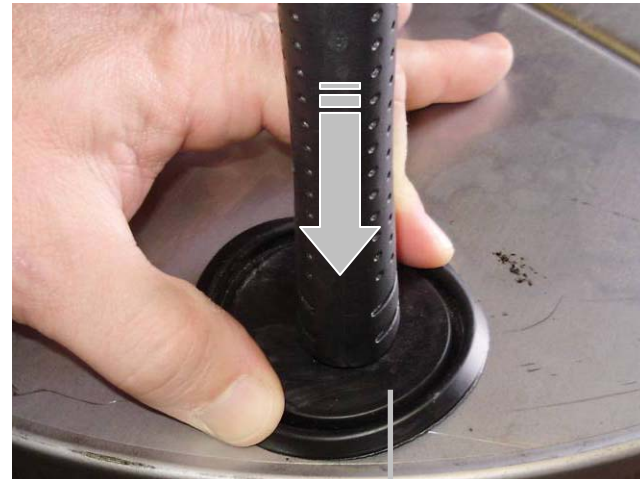
Detailed view:
incoming power
to terminal strip.

Once unit has been installed use 5871B8 cap plugs (supplied with unit) to seal holes in canister bottom located in lower cleanout door (see illustration on next page). Extra cap plugs are included with the unit in case plug becomes damaged during shipping removal. After cap plugs are installed, then connect unit to power (see below illustration). NOTE: when mounting unit, don't forget to allow clearance for clean-out door to swing open.

To attach hose,
thread into metal hole
counter clockwise.



Edge of
hose will
need to start
here.



To insert 5871B8 cap plugs into bottom holes, pinch
cap plug into place using index finger and thumb.
With edges of plug resting against edges of hole,
firmly push down on plug with end of hammer or
other blunt object until plug snaps into place.

Operating Instructions:

- Turn toggle switch to on position when machine needs to run, and off position when finished.
- Remove vacuum hose from hanger and vacuum subject accordingly. Do not vacuum wet objects or fine dust (ex – drywall dust).
- Return vacuum hose to hanger when finished.

Maintenance:

- **All servicing of machine should be conducted by an authorized service representative!**
- Filter bags should be accessed and shaken down weekly. It is recommended to keep a new set of bags on hand so that once every few months the bags can be replaced and then laundered.
- To maintain performance, empty dirt bin from the canister on a regular basis.
- Periodically inspect wires and connections for wear or fatigue.
- Check vac hose for cracks on a weekly basis.
- Clean canister with a stainless steel cleaner as needed. Decals can be cleaned with mild soap and water.
- Check motor brushes approx. every 3 months for excessive wear. Motor brushes should be changed if they are shorter than 3/8". ***Please disconnect power before doing this.***







DISCONNECT POWER BEFORE SERVICING OR TROUBLESHOOTING!



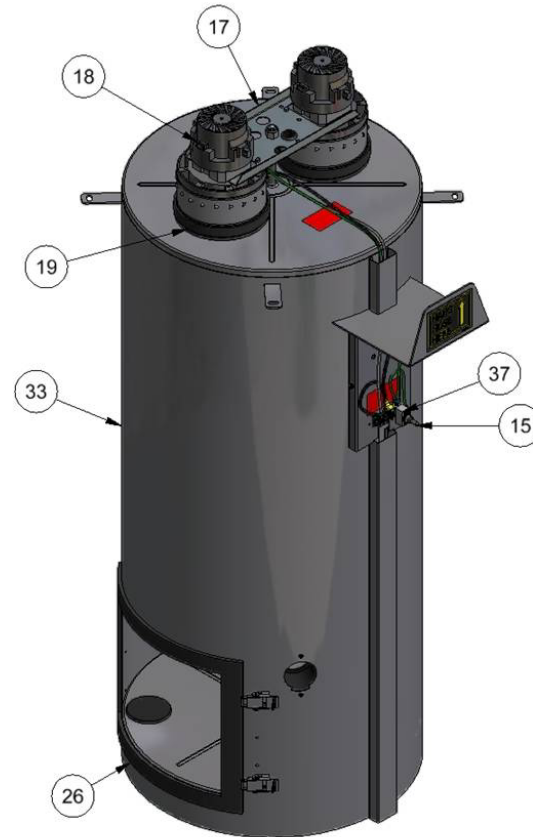
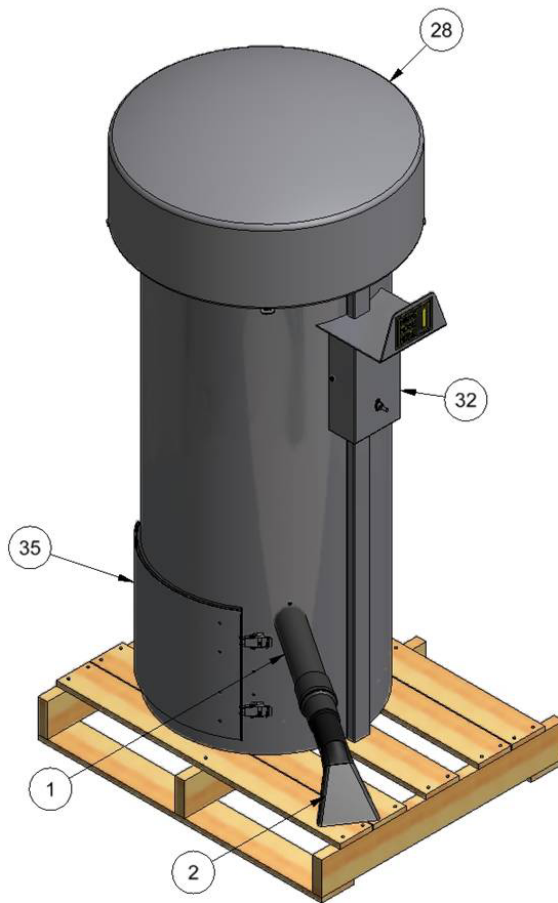
Troubleshooting: !DISCONNECT POWER BEFORE SERVICING OR TROUBLESHOOTING!

Problem	Possible cause	Solution
Unit is not powered.	Breaker inside fuse panel is not in the on position.	Turn breaker on.
	No power to machine.	Check incoming power line voltage.
	Loose connection.	Check incoming power connection.
Machine is behaving erratically.	Is the incoming power at 120V?	Check voltage and monitor while machine runs. Low voltage can cause erratic behavior.
	Are any of the machines wires worn through or connections not making contact?	Inspect wiring and connections. Look for sharp bends in wires and places where wire is against the metal chassis.
Unit keeps tripping breaker.	Inadequate wire size ran to machine.	Call electrician and install proper wire size for electrical service versus length or run.
	Wrong size breaker.	Install correct breaker (only if wire size is adequate to handle breaker).
Fuses for vac motors keep blowing.	Inadequate wire size ran to machine.	Call electrician and install proper wire size for electrical service versus length or run.
	Motor brushes may be bad or too short.	Replace motor brushes.
Lack of vacuum suction.	Vac hose clogged?	Clean debris from vac hose.
	Filter bags need cleaned or dirt chamber needs emptied?	Shake or clean filter bags or replace and empty lower dirt chamber.
	Vac hose is split?	Replace/repair vac hose.
	Cleanout door gaskets torn or worn?	Replace gaskets.
	Vac motor gaskets are worn or motor is not tight against.	Inspect/replace gaskets and assure motor is tight against them.
	Dual vac hose unit, both hoses are being used.	When both hoses are being used, suction will be lower. Double check all 3 motors are working however.
	Lower chamber cap plugs/mounting hole covers have popped out?	Open lower chamber and inspect plugs, order new if needed.
	Cleanout door gaskets torn or worn?	Replace gaskets.
	One of the vac motors is not working?	Check line motor fuse and replace. Replace motor if necessary.

PART NO.	8704B				BILL OF MATERIALS				BILL OF MATERIALS																										
					ITEM	PART NUMBER	DESCRIPTION	QTY	ITEM	PART NUMBER	DESCRIPTION	QTY																							
	35	8615-5W	CLEANOUT DOOR WELDMENT	1	1	2036	HOSE, 2" X 15' BLACK VACUUM	1																											
	36	8631	11 X 55 PAD	1	2	2058	CLAW/CUFF ASSEMBLY, 2"	1																											
	37	8673-10	2 MTR COMMERCIAL WIRE HARNESS	1	3	5600D4	3/8-16 X 1.5 HHCS	4																											
	38	8701	DOME FOAM, SIDE	1	4	5603D1	10 Std NC Nylock Nut	1																											
	39	8701-1	DOME FOAM, TOP ROUND	1	5	5603D11	1/2 Std NC Nylock Nut	1																											
	40	8732	NAMEPLATE SERIAL TAG, UL	1	6	5606D2	1/4 WASHER	1																											
	41	8754	DECAL WARN, ENG/FRN/SPA	1	7	5606D22	WASHER, 3/8 FENDER	8																											
	42	8828	TOGGLE SWITCH PLATE	1	8	5627D2	Pan Head, Slotted, 6-32 x 5/8	1																											
	43	B5722-002	NUT, 3/8-16 UNC HEX LOCK NUT	4	9	5636D1	#10-24 PHIL. PAN HEAD SCREW	2																											
					10	5639D4	RUBBER GROMMET	1																											
					11	5647D2	RIVET, 1/8" SS	8																											
					12	5647D3	RIVET, 3/16" SS	7																											
					13	5871b8	PLUG, VAC BOTTOM 2-1/2"	8																											
					14	5901D1	WIRE NUT, YELLOW	2																											
					15	5920	BOOT, TOGGLE SWITCH	1																											
					16	8047	BAG, CLEAR POLY	1																											
					17	8051G	BRACKET, MOTOR MOUNT	1																											
					18	8056EM	QUIET MOTOR, ELECTRO 120V	2																											
					19	8079	ASSEMBLY, FILTER BAG	2																											
					20	8080	TRASH BIN	1																											
					21	8081	CABLE TIE MOUNT	2																											
					22	8084	CABLE TIE	4																											
					23	8108	#10 x 1/2 TAP SCREW	4																											
					24	8153-1	LATCH, CLEANOUT DOOR	2																											
					25	8157	NUT, #6-32 KEPP NUT STAINLESS	1																											
					26	8159	DOOR GASKET	1																											
					27	8183	DECAL, "DISCONNECT POWER"	2																											
					28	8305	24" STAINLESS STEEL DOME	1																											
					29	8424-1	DECAL, SUPER VAC	1																											
					30	8429-1	DECAL, HANG HOSE HERE	1																											
					31	8437D002	ETL DECAL, AIR MACHINES	1																											
					32	8505-1	COVER, CONTROL PLATE	1																											
					33	8519W	COMMERCIAL VAC CANISTER WELDMENT	1																											
					34	8605	PALLET, VAC, 26" X 30.5"	1																											
<table border="1"> <tr> <td colspan="5">TITLE SILVER TOUCH "QUIET", COMMERCIAL W/8080 BIN</td> </tr> <tr> <td colspan="2">UNSPECIFIED TOLERANCES</td> <td colspan="2">MATERIAL</td> <td rowspan="4">  </td> </tr> <tr> <td colspan="2">1 PL ±.030</td> <td colspan="2">SCALE</td> </tr> <tr> <td colspan="2">2 PL ±.010</td> <td colspan="2">DRAWN BY JOHN F.</td> </tr> <tr> <td colspan="2">3 PL ±.003</td> <td colspan="2">DATE 2/7/2012</td> </tr> <tr> <td colspan="2">ANGLE ±1.0°</td> <td colspan="2"></td> <td> CEDAR RAPIDS, IOWA PART NO. 8704B </td> </tr> </table>									TITLE SILVER TOUCH "QUIET", COMMERCIAL W/8080 BIN					UNSPECIFIED TOLERANCES		MATERIAL			1 PL ±.030		SCALE		2 PL ±.010		DRAWN BY JOHN F.		3 PL ±.003		DATE 2/7/2012		ANGLE ±1.0°				CEDAR RAPIDS, IOWA PART NO. 8704B
TITLE SILVER TOUCH "QUIET", COMMERCIAL W/8080 BIN																																			
UNSPECIFIED TOLERANCES		MATERIAL																																	
1 PL ±.030		SCALE																																	
2 PL ±.010		DRAWN BY JOHN F.																																	
3 PL ±.003		DATE 2/7/2012																																	
ANGLE ±1.0°				CEDAR RAPIDS, IOWA PART NO. 8704B																															
A	6793	TRANSFER TO INVENTOR, UPDATE BOM TO CURRENT		020712	JF																														
REV	NO.	DESCRIPTION		DATE	BY																														
THIS DOCUMENT SHALL NOT BE REPRODUCED NOR SHALL THE INFORMATION THEREIN BE USED BY OR DISCLOSED TO OTHERS EXCEPT AS AUTHORIZED BY J.E. ADAMS INDUSTRIES																																			

PART
NO.

8704B



TITLE
SILVER TOUCH "QUIET", COMMERCIAL W/8080 BIN

UNSPECIFIED
TOLERANCES

1 PL ±.030
2 PL ±.010
3 PL ±.003
ANGLE ±1.0°

MATERIAL

SCALE

DRAWN
BY JOHN F.

DATE 2/7/2012



CEDAR RAPIDS, IOWA

PART
NO.

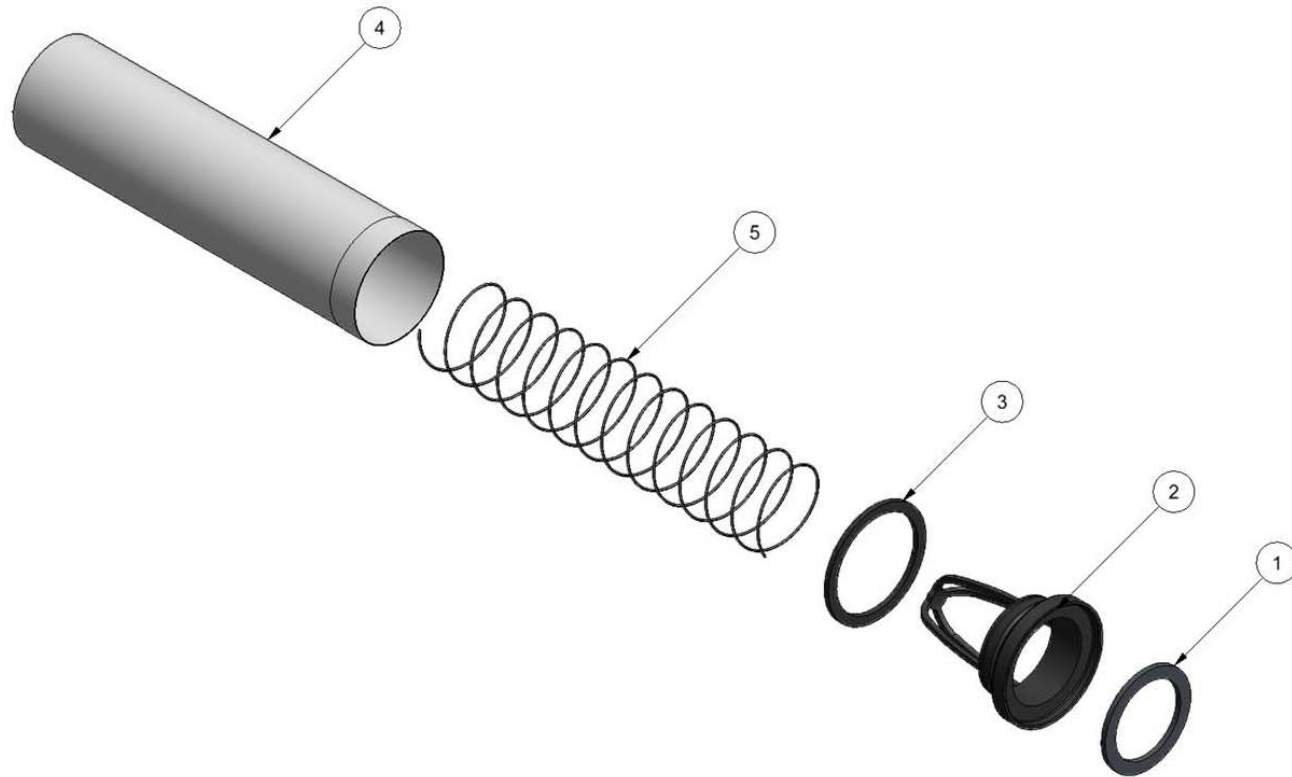
8704B

REV.
A

REV	NO.	DESCRIPTION	DATE	BY
THIS DOCUMENT SHALL NOT BE REPRODUCED NOR SHALL THE INFORMATION THEREIN BE USED BY OR DISCLOSED TO OTHERS EXCEPT AS AUTHORIZED BY J.E. ADAMS INDUSTRIES				

EXPLODED VIEW: 8079 FILTER BAG ASSEMBLY

BILL OF MATERIALS			
ITEM	PART NUMBER	DESCRIPTION	QTY
1	8057	MOTOR GASKET	1
2	8060	MOTOR BUSHING	1
3	8063	BUSHING GASKET	1
4	8072	FILTER BAG W/ O-RING	1
5	8075	FILTER BAG SPRING	1



THIS DOCUMENT SHALL NOT BE REPRODUCED NOR SHALL THE INFORMATION THEREIN BE USED BY OR DISCLOSED TO OTHERS EXCEPT AS AUTHORIZED BY J.E. ADAMS INDUSTRIES



