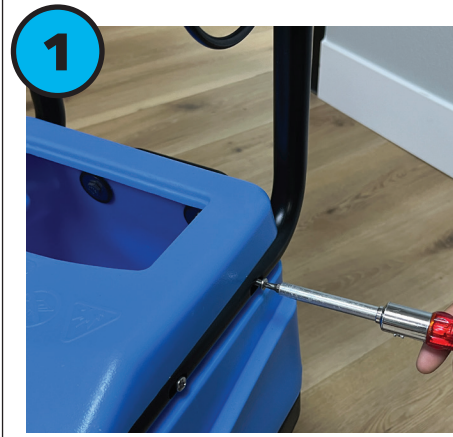


Before your first use:



Please register your new steamer at www.mytee.com/product-registration to activate your warranty.



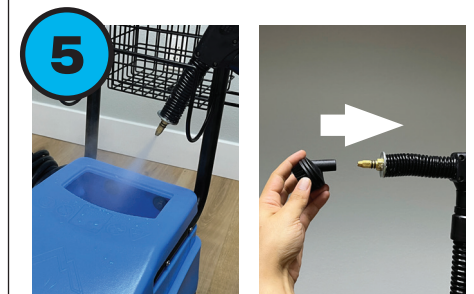
Attach the handle using the four included screws and a Phillips screwdriver.



Add water into the blue fresh water tank. Use distilled water to avoid mineral build-up in the kettle.

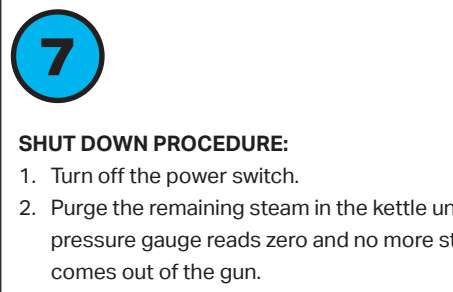


Turn on the **POWER** switch. The light by the switch will turn on. Wait about 10-12 minutes for the pressure to build. When the pressure gauge reaches the green cut-out area, the **READY** light will turn on.



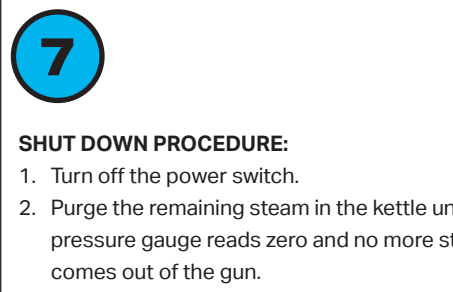
Pull the trigger to purge any water in the hose. After purging, connect any desired attachments to the steam gun nozzle.

⚠ WARNING: VERY HOT WATER/ STEAM. NEVER POINT GUN TOWARDS YOURSELF OR OTHERS.



RECOMMENDED: Steam clean using 5-10 second pulses. Wipe up any condensation left behind with a microfiber cloth.

⚠ WARNING: VERY HOT WATER/ STEAM. NEVER POINT GUN TOWARDS YOURSELF OR OTHERS.



SHUT DOWN PROCEDURE:

1. Turn off the power switch.
2. Purge the remaining steam in the kettle until the pressure gauge reads zero and no more steam comes out of the gun.
3. Empty any remaining water in the fresh water tank at the end of each work day.

AFTER THE MACHINE COOLS:

Drain the remaining water in the kettle weekly using the valve on the bottom of the machine.

⚠ DO NOT ATTEMPT TO DRAIN THE KETTLE WHILE STILL HOT. THE MACHINE MUST BE COMPLETELY COOLED BEFORE DRAINING.



Items included in package:

1. Push handle and basket w/ screws
2. 1x fabric tool
3. 2x bonnet covers
4. 1x gum scraper
5. 3x small nylon brushes
6. 3x large nylon brushes
7. 2x metal brushes
8. 1x jet nozzle

DO NOT EXPOSE THIS UNIT TO HARSH WEATHER ELEMENTS. Temperatures below freezing may damage components and void the warranty.

DO NOT DROP OR OTHERWISE SUBJECT THIS UNIT TO EXCESSIVE IMPACTS. This may damage internal components. Component malfunctions due to force are not covered under warranty.

	HOT SURFACE / HOT STEAM Surface temperature may exceed 350°F. Risk of severe burns. Allow unit to cool before opening.
WARNING	
	HOT WATER DRAIN Allow steam kettle to cool and depressurize completely before opening drain valve.
CAUTION	

Find full product manuals at:
www.mytee.com/support/manuals



Important info for Mytee owners at:
www.mytee.com/mytee-big-welcome



13655 Stowe Dr.
Poway, CA 92064
858-679-1191
www.mytee.com



Focus™ Vapor Steamer

Quick Start Guide



1700



Register your new steamer at
www.mytee.com/product-registration
to activate your warranty.