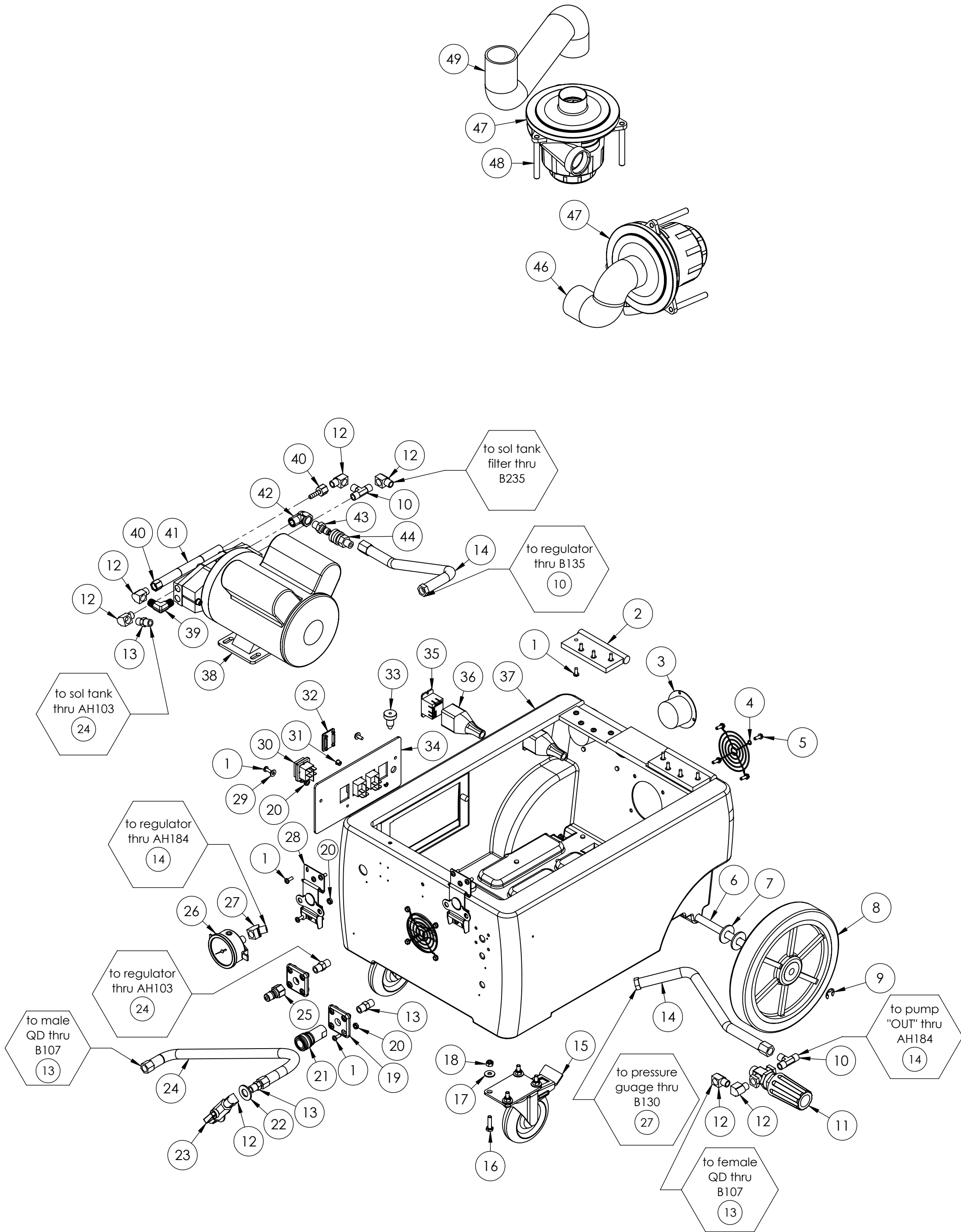
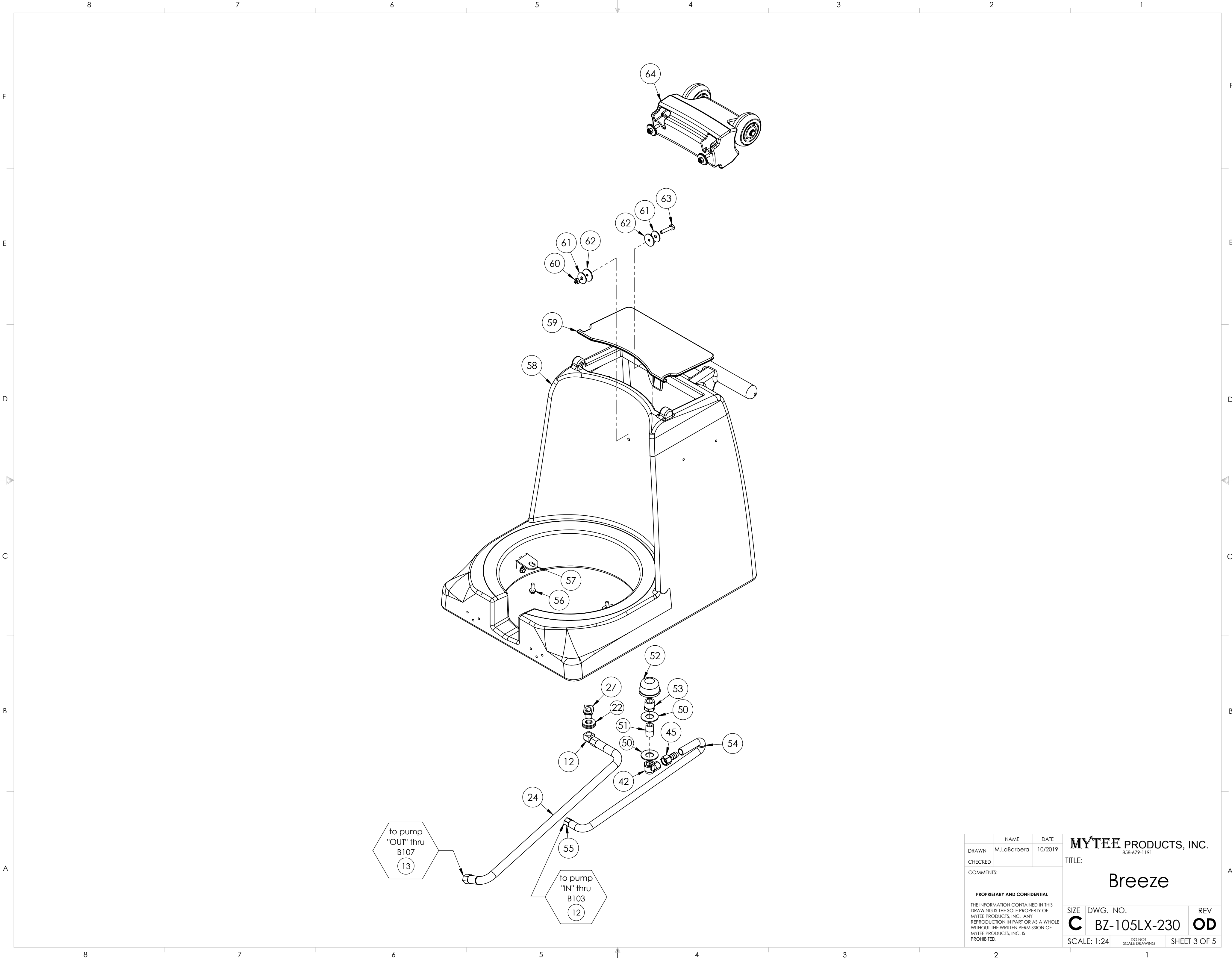


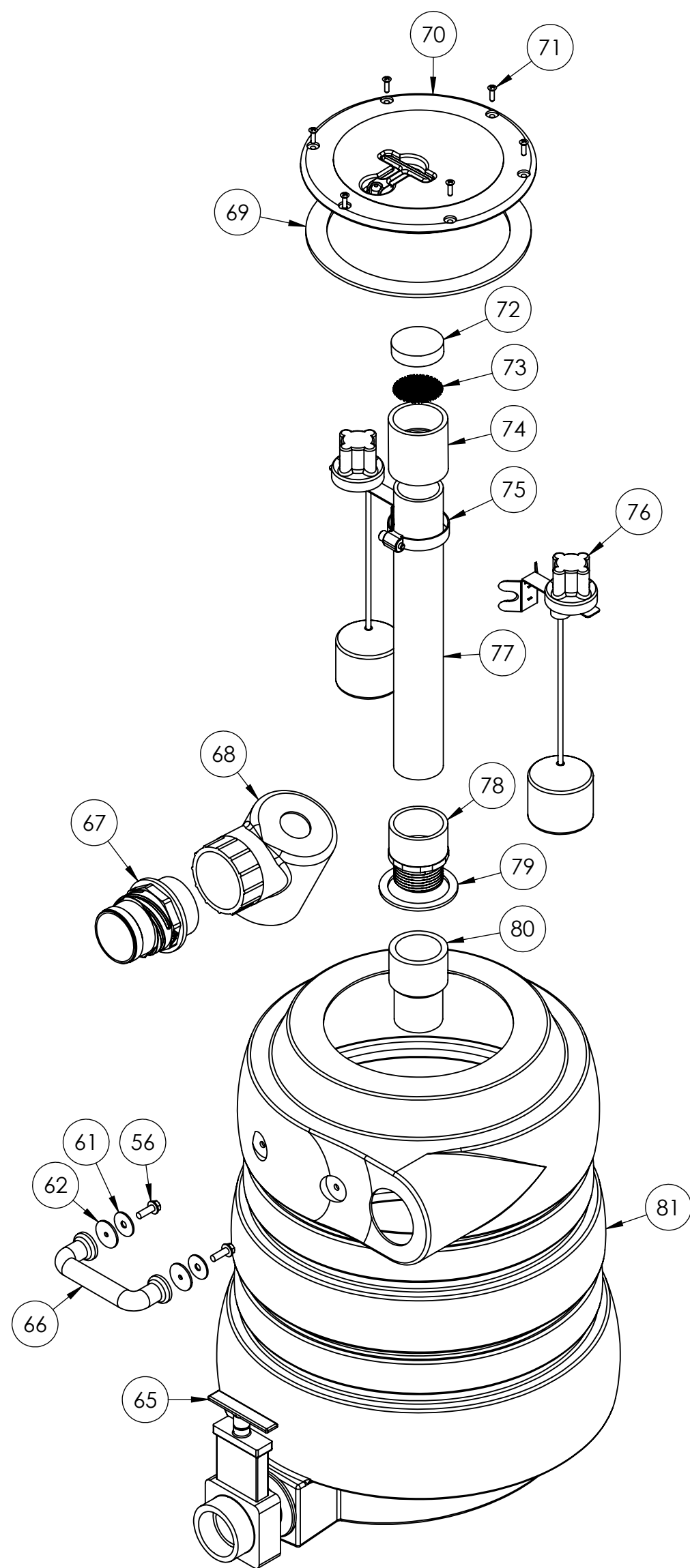
	ITEM NO.	PART NO.	DESCRIPTION	QTY.
F	1	H230	screw, 10-32 x 1/2" phil pan head, s/s	40
	2	H487	bracket, hinge	2
	3	E360	flanged male inlet recaptacle, 230V, 20A	2
	4	H296	guard, cooling fan, wire	2
	5	H343	screw, #10 x 5/8" hex head zinc	8
	6	H371	axle, 18.03" x .50" dia	1
	7	H254	washer, axle, cut 1/2" id	4
	8	H392	wheel, 10"	2
	9	H042	c-clip, 12mm, external	2
E	10	B135	tee, 1/4" mpt x 1/4" mpt x 1/4" mpt	2
	11	C313C	regulator, 450 psi, silver spring	1
	12	B103	elbow, 90 deg street, 1/4"mpt x 1/4" fpt	9
	13	B107	nipple, hex, 1/4"mpt x 1/4"mpt	5
	14	AH103	hose, pulse, 3/8" x 14.5", 1/4 FSW x 1/4 FPT	1
	15	H668	caster, 4", black hub & gray tread	2
	16	H342	bolt, 1/4-20 x 1" hex head, s/s	8
	17	H210	washer, 1/4" flat, s/s	8
	18	H216	nut, lock, 1/4-20, nylon insert, s/s	8
D	19	H484	plate, mounting, QD	2
	20	H273	nut, kep, #10-32 zinc	18
	21	B102	quick disconnect, 1/4" fqd x 1/4" fpt	1
	22	H212	flat washer, 9/16"ID x 1 1/16"OD, AN960-C916	5
	23	B656	valve, ball, 1/4" fpt x 1/4" fpt, s/s	1
	24	AH184	hose, 3/8" x 10", (OAL), f x fsw, surge, 1600psi	1
	25	B101	qd, brass, 1/4" m	1
	26	H308D	gauge, pressure, 2000 PSI	1
	27	B130	45 deg, street elbow, brass, 1/4" male NPTF	2
C	28	H486	latch, front, set, large	2
	29	H289	washer, 10 flat, s/s	2
	30	E515	switch, rocker, 2 position	3
	31	H422	plug, dome 3/8", black	2
	32	P967A	plug, switch	1
	33	G068	bumper, 7/8" x 1/4" head	2
	34	H641-DIY	plate, switch	1
	35	E632	relay, shut-off switch, mechanical float, 115v	2
	36	G165	cover, relay	2
B	37	P696	base, breeze	1
	38	C342	pump, 500 PSI, pumptec, 120V/230V	1
	39	B136	elbow, brass, 90 deg, 1/4" mpt x 1/4" mpt	1
	40	B110	adapter, brass, 1/4" sw barb x 1/4" fpt, w/gasket	2
	41	PH615	sol hose, 1/2" kuri 100psi	1
	42	B186	elbow, 90 deg street, 3/8"mpt x 3/8" fmpt	2
	43	B260A	quick disconnect, 1/4" mqd x mpt, open-spray	1
	44	B259	qd, brass, 1/4" fqd x mpt	1
	45	B160	adapter, brass, 1/2" barb x 3/8" fsw, ball end	1
A	46	PH628-10	vac hose, 2", black, wire reinforced	1
	47	C348A	vac motor, lx, hybrid, w/inlet tube, 173 cfm, 230v	2
	48	H503	vac support, 3 stage, 3.25", no thrds	6
	49	PH628-10	vac hose, 2", black, wire reinforced	1
	50	H299	washer, 11/16" id x 1-1/2" od x .075, s/s	2
	51	B216	nipple, brass, 3/8" x close	1
	52	B119A	filter, strainer, 1/2" fpt	1
	53	B210	bushing, brass, 1/2"mpt x 3/8" fpt, hex	1
	54	PH615	sol hose, 1/2" kuri 100psi	1
	55	B235	adapter, brass, 3/8" barb x 1/4" fsw	1
	56	H768	bolt, 1/4-20 x 3/4" serrated hex flange, zinc	6
	57	H390A	bracket, "L"	2
	58	P697	sol tank, breeze	1
	59	G062	lid, sol tank	1
	60	H215	nut, hex, 1/4-20 s/s	1
	61	H211	washer, 1/4" id x 1" od, flat, s/s	4
	62	G052	washer, buna 1-1/8" od x 3/16" id	4




		NAME	DATE	MYTEE PRODUCTS, INC.	
DRAWN	M.LaBarbera	10/2019		858-679-1191	
CHECKED				TITLE:	
COMMENTS:				Breeze	
PROPRIETARY AND CONFIDENTIAL THE INFORMATION CONTAINED IN THIS DRAWING IS THE SOLE PROPERTY OF MYTEE PRODUCTS, INC. ANY REPRODUCTION IN PART OR AS A WHOLE WITHOUT THE WRITTEN PERMISSION OF MYTEE PRODUCTS, INC. IS PROHIBITED.				SIZE	DWG. NO.
				C	BZ-105LX-230
				SCALE: 1:24	DO NOT SCALE DRAWING
				REV	OD
				SHEET 2 OF 5	



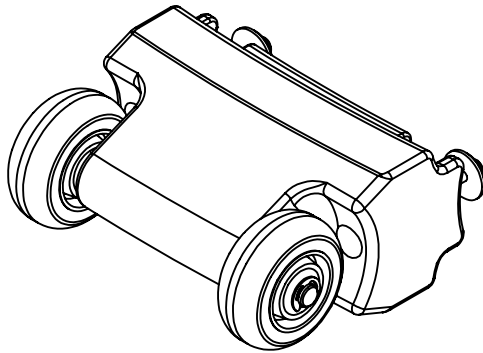
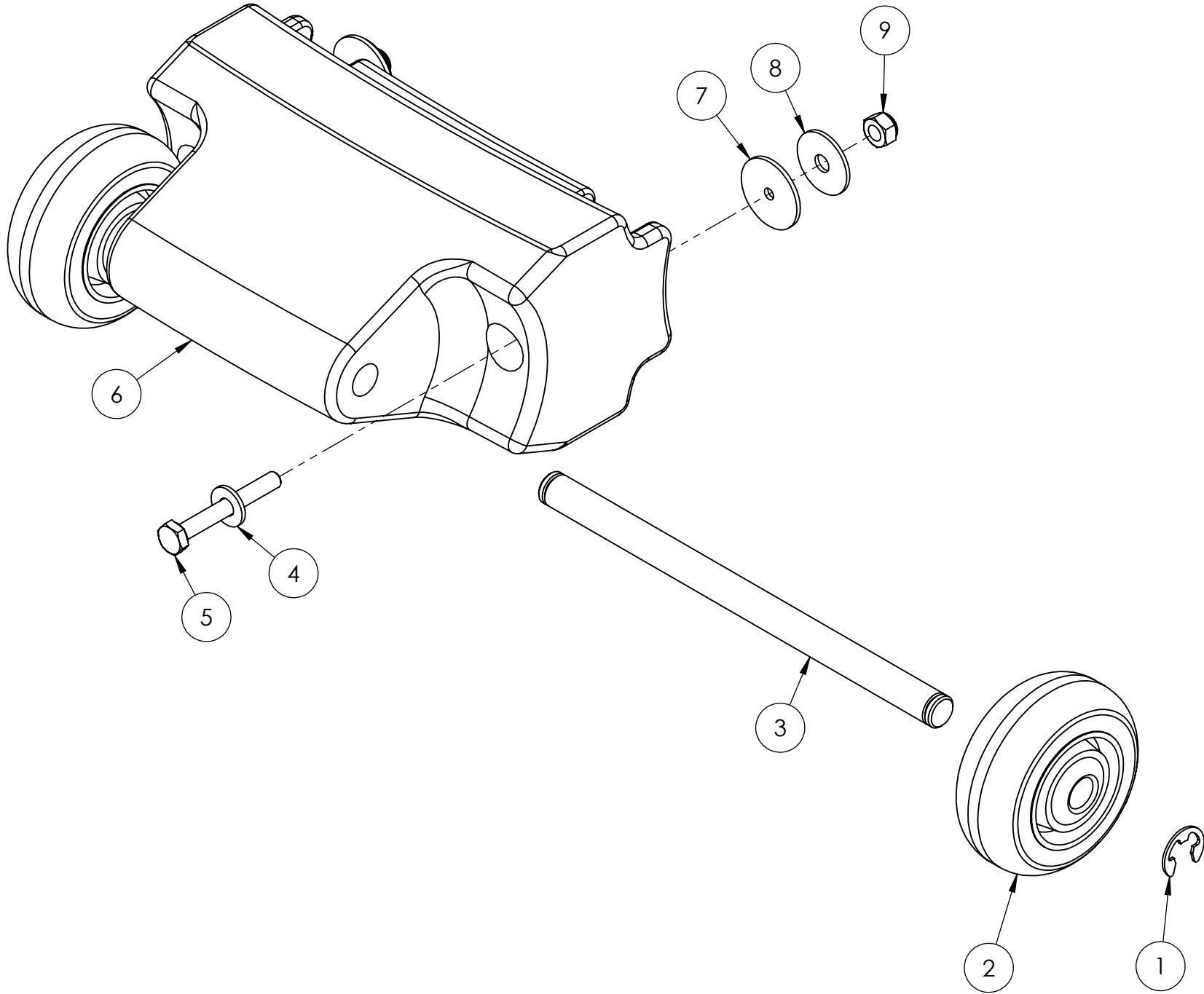
	NAME	DATE	MYTEE PRODUCTS, INC. 858-679-1191	
DRAWN	M.LaBarbera	10/2019	TITLE:	
CHECKED			Breeze	
COMMENTS:			REV	
PROPRIETARY AND CONFIDENTIAL			OD	
THE INFORMATION CONTAINED IN THIS DRAWING IS THE SOLE PROPERTY OF MYTEE PRODUCTS, INC. ANY REPRODUCTION IN PART OR AS A WHOLE WITHOUT THE WRITTEN PERMISSION OF MYTEE PRODUCTS, INC. IS PROHIBITED.			SIZE	DWG. NO.
			C	BZ-105LX-230
			SCALE: 1:24	SHEET 3 OF 5



	NAME	DATE			
DRAWN	M.LaBarbera	10/2019			
CHECKED					
COMMENTS:					
<p><b>PROPRIETARY AND CONFIDENTIAL</b></p> <p>THE INFORMATION CONTAINED IN THIS DRAWING IS THE SOLE PROPERTY OF MYTEE PRODUCTS, INC. ANY REPRODUCTION IN PART OR AS A WHOLE WITHOUT THE WRITTEN PERMISSION OF MYTEE PRODUCTS, INC. IS PROHIBITED.</p>			<p>TITLE:</p> <p><b>Breeze</b></p>		
			SIZE	DWG. NO.	REV
			<b>C</b>	<b>BZ-105LX-230</b>	<b>OD</b>
			SCALE: 1:24	DO NOT SCALE DRAWING	SHEET 4 OF 5

ITEM NO.	PART NO.	DESCRIPTION	QTY.
1	H042	c-clip, 12mm, external	2
2	H358B	wheel, 3"	2
3	H507	axle, 13.10" x .50" dia	1
4	H210	washer, 1/4" flat, s/s	2
5	H169	bolt, 1/4-20 x 2", hex head	2
6	P650	wheel handle, LTD	1
7	G052	washer, buna 1-1/8" od x 3/16" id	2
8	H211	washer, 1/4" id x 1" od, flat, s/s	2
9	H216	nut, lock, 1/4-20, nylon insert, s/s	2

REVISIONS			
REV.	DESCRIPTION	DATE	APPROVED
OD	ORIGINAL DRAFT	3/2019	JFL



	NAME	DATE	<b>MYTEE</b> PRODUCTS, INC. 858-679-1191	
DRAWN	M.LaBarbera	3/2019		
CHECKED			TITLE:	
COMMENTS:  <b>PROPRIETARY AND CONFIDENTIAL</b>  THE INFORMATION CONTAINED IN THIS DRAWING IS THE SOLE PROPERTY OF MYTEE PRODUCTS, INC.. ANY REPRODUCTION IN PART OR AS A WHOLE WITHOUT THE WRITTEN PERMISSION OF MYTEE PRODUCTS, INC. IS PROHIBITED.			Handle, Wheel Kit, LTD	
			SIZE   DWG. NO.	REV
			<b>CBZ-105LX-230OD</b>	
			SCALE: 1:4	DO NOT SCALE DRAWING   SHEET 5 OF 5