

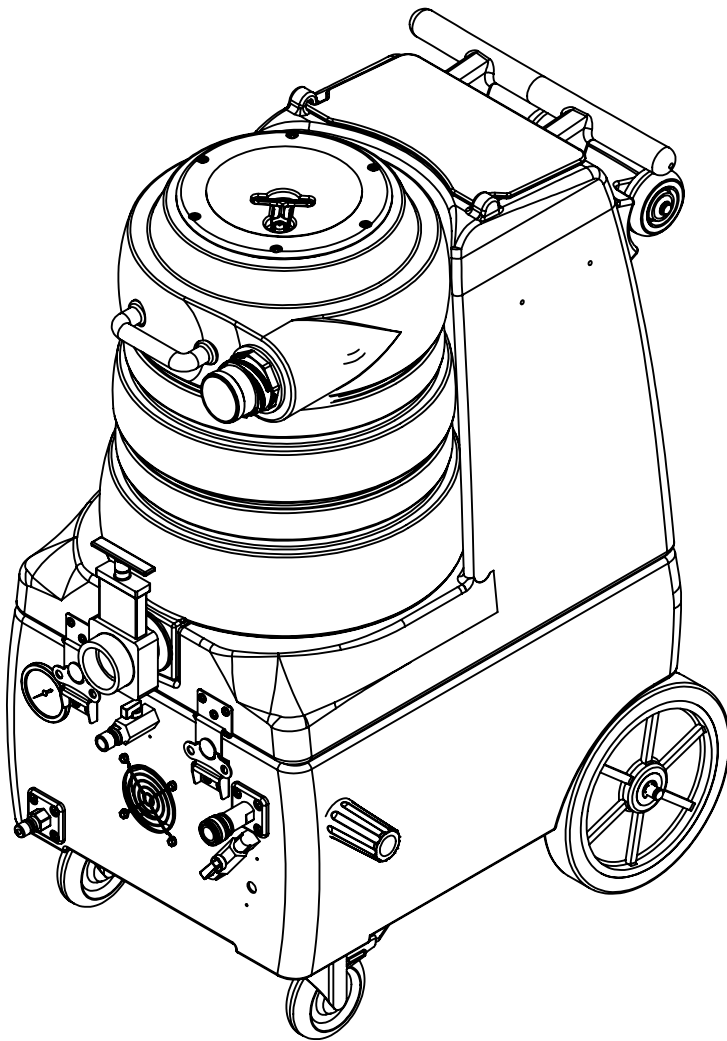
ITEM NO.	PART NO.	DESCRIPTION	QTY.
1	H230	screw, 10-32 x 1/2" phil pan head, s/s	40
2	H487	bracket, hinge	2
3	E360	flanged male inlet recaptacle, 230V, 20A	2
4	H296	guard, cooling fan, wire	2
5	H343	screw, #10 x 5/8" hex head zinc	8
6	H371	axle, 18.03" x .50" dia	1
7	H254	washer, axle, cut 1/2" id	4
8	H392	wheel, 10"	2
9	H042	c-clip, 12mm, external	2
10	B135	tee, 1/4" mpt x 1/4" mpt x 1/4" mpt	2
11	C313C	regulator, 450 psi, silver spring	1
12	B103	elbow, brass, 90 deg, 1/4"mpt x 1/4" fpt	9
13	B107	nipple, brass, 1/4"m, hex	6
14	AH103	hose, pulse, 3/8" x 14.5", 1/4 FSW x 1/4 FPT	2
15	H668	caster, 4", black hub & gray tread	2
16	H342	bolt, 1/4-20 x 1" hex head, s/s	8
17	H210	washer, 1/4" flat, s/s	8
18	H216	nut, lock, 1/4-20, nylon insert, s/s	8
19	H484	plate, mounting, QD	2
20	H273	nut, kep, #10-32 zinc	18
21	B102	qd, brass, 1/4" f x 1/4" fpt	1
22	H212	flat washer, 9/16"ID x 1 1/16"OD, AN960-C916	7
23	B656	valve, ball, 1/4" fpt x 1/4" fpt, s/s	1
24	AH184	hose, 3/8" x 10", (OAL), f x fsw, surge, 1600psi	2
25	B101	qd, brass, 1/4" m	1
26	B199	coupler, 1/2" fpt x 1/4" fpt	2
27	B656A	valve, ball, 1/2" mpt x 1/2" fpt, s/s	1
28	B205B	quick disconnect, 1/2" mpt x 3/4" mqd, garden hose	1
29	H308D	gauge, pressure, 2000 PSI	1
30	B130	45 deg, street elbow, brass, 1/4" male NPTF	2
31	H486	latch, front, set, large	2
32	H289	washer, 10 flat, s/s	2
33	E515	switch, rocker, 2 position	3
34	H422	plug, dome 3/8", black	2
35	P967A	plug, switch	1
36	H434	plug, vent, heyco, 1/2"	1
37	G068	bumper, 7/8" x 1/4" head	2
38	H641-DIY	plate, switch	1
39	P696	base, breeze	1
40	C342	pump, 500 PSI, pumptec, 120V/230V	1
41	B136	elbow, brass, 90 deg, 1/4" mpt x 1/4" mpt	2
42	B110	adapter, brass, 1/4" sw barb x 1/4" fpt, w/gasket	5
43	PH615	sol hose, 1/2" kuri 100psi	1
44	B186	elbow, 90 deg street, 3/8"mpt x 3/8" fmpt	2
45	B260A	quick disconnect, 1/4" mqd x mpt, open-spray	1
46	B259	qd, brass, 1/4" fqd x mpt	1
47	C381	pump out, 3.3 gpm, 115v	1
48	B109	barb, 1/4" barb x 1/4" mpt	2
49	PH615	sol hose, 1/2" kuri 100psi	1
50	PH615	sol hose, 1/2" kuri 100psi	1
51	B160	adapter, brass, 1/2" barb x 3/8" fsw, ball end	2
52	PH628-10	vac hose, 2", black, wire reinforced	1
53	C347	vac motor, lx, hybrid, 173 cfm, 120v	1
54	H503	vac support, 3 stage, 3.25", no thrds	6
55	C348	vac motor, lx, hybrid, w/inlet tube, 173 cfm, 120v	1
56	PH628-10	vac hose, 2", black, wire reinforced	1
57	B113	tee, 1/4" fpt x 1/4" fpt x 1/4" fpt	1
58	H299	washer, 11/16" id x 1-1/2" od x .075, s/s	4
59	B216	nipple, brass, 3/8" x close	2
60	B119A	filter, strainer, 1/2" fpt	1
61	H333	filter, mesh, auto dump, 1/2" npt	1
62	B210	bushing, brass, 1/2"mpt x 3/8" fpt, hex	2


ITEM NO.	PART NO.	DESCRIPTION	QTY.
63	PH615	sol hose, 1/2" kuri 100psi	1
64	PH615	sol hose, 1/2" kuri 100psi	1
65	B235	adapter, brass, 3/8" barb x 1/4" fsw	1
66	PH615	sol hose, 1/2" kuri 100psi	1
67	H768	bolt, 1/4-20 x 3/4" serrated hex flange, zinc	6
68	H390A	bracket, "L", 2" x 2"	2
69	P697	sol tank, breeze	1
70	G062	lid, sol tank	1
71	H215	nut, hex, 1/4-20 s/s	1
72	H211	washer, 1/4" id x 1" od, flat, s/s	4
73	G052	washer, buna 1-1/8" od x 3/16" id	4
74	H203	bolt, 1/4-20 x 1-1/4"	1
75	H541A	valve, float, autofill	1
76	B198	adapter, 3/4" fgh x 1/2" mpt, w/ gasket	1
77	B167	elbow, 90 deg street, 1/2" fpt x 1/2" mpt	1
78	B105	bushing, brass, 3/8" mpt x 1/4"	1
79	B303	nipple, 3" long x 1/4" npt x 1/4" npt	3
80	B142	coupling, 1/4" fpt x 1/4" fpt	2
81	B111	adapter, brass, extender, 1/4" mpt x 1/4" fpt, hex	1
82	B643	adapter, 3/8" fpt x 1/4" mpt	1
83	A145	Handle, Wheel Kit, LTD	1
84	H225	valve, drain, 1-1/2"	1
85	H485	handle, aluminum grip, black	1
86	H135	Cuff-Lynx, 2" m cuff x 2" mpt	1
87	A926	elbow, inlet assembly 2"	1
88	G091	gasket, 7", vac lid	1
89	G090	lid, vac tank, clear, 7"	1
90	H304	screw, #8 x 5/8 phil oval, s/s	6
91	G003	filter, foam, 2", vac stack, 1/2"	1
92	G097	filter, screen mesh, 1.90" dia	1
93	P502	adapter, 1.5" pvc, fslip x fslip	1
94	PH633-13	pipe, pvc, 1-1/2"	1
95	P520	adapter, 1.5" mpt pvc	1
96	G002	gasket, cam fitting polyethylene, 2.35" OD 1.90" ID	1
97	H300	cuff, hose, 1-1/2 x 1-1/2, wire	1
98	P698	vac tank, breeze	1
99	B273	elbow, 90 deg street, 3/8" fpt x 1/2" mpt	1

## ITEMS NOT SHOWN

PART NO.	DESCRIPTION	QTY.
ADP-ACCS	manual, print, accessories	1
ADP-QS	manual, print, extractor	1
A145	wheel kit, handle	1
E351A	power cord, ext, 50', 12/3, LA066A female twist locks	2
G008	black piglet filters	1
G076	filter bag, 3.5" metal o-ring, mesh bag	1
H110V	Cuff-Lynx, 2" fem cuff x 2" fem vac hose, vinyl	1
H141V	Cuff-Lynx, 2" fem cuff x 1.5" fem vac hose, vinyl	1
H226	spout, drain, 45 degree	1
P590	cuties, 1/4" qd, standard pack of 2	1

REVISIONS			
REV.	DESCRIPTION	DATE	APPROVED
OD	ORIGINAL DRAFT	10/2019	JFL



	NAME	DATE		
DRAWN	M.LaBarbera	10/2019	858-679-1191	
CHECKED			TITLE:	
COMMENTS:			Breeze	
<p><b>PROPRIETARY AND CONFIDENTIAL</b></p> <p>THE INFORMATION CONTAINED IN THIS DRAWING IS THE SOLE PROPERTY OF MYTEE PRODUCTS, INC. ANY REPRODUCTION IN PART OR AS A WHOLE WITHOUT THE WRITTEN PERMISSION OF MYTEE PRODUCTS, INC. IS PROHIBITED.</p>			SIZE <b>C</b>	DWG. NO. <b>BZ-105LX-Auto</b>
			DO NOT SCALE DRAWING	REV <b>OD</b>
			SCALE: 1:24	SHEET 1 OF 5

F

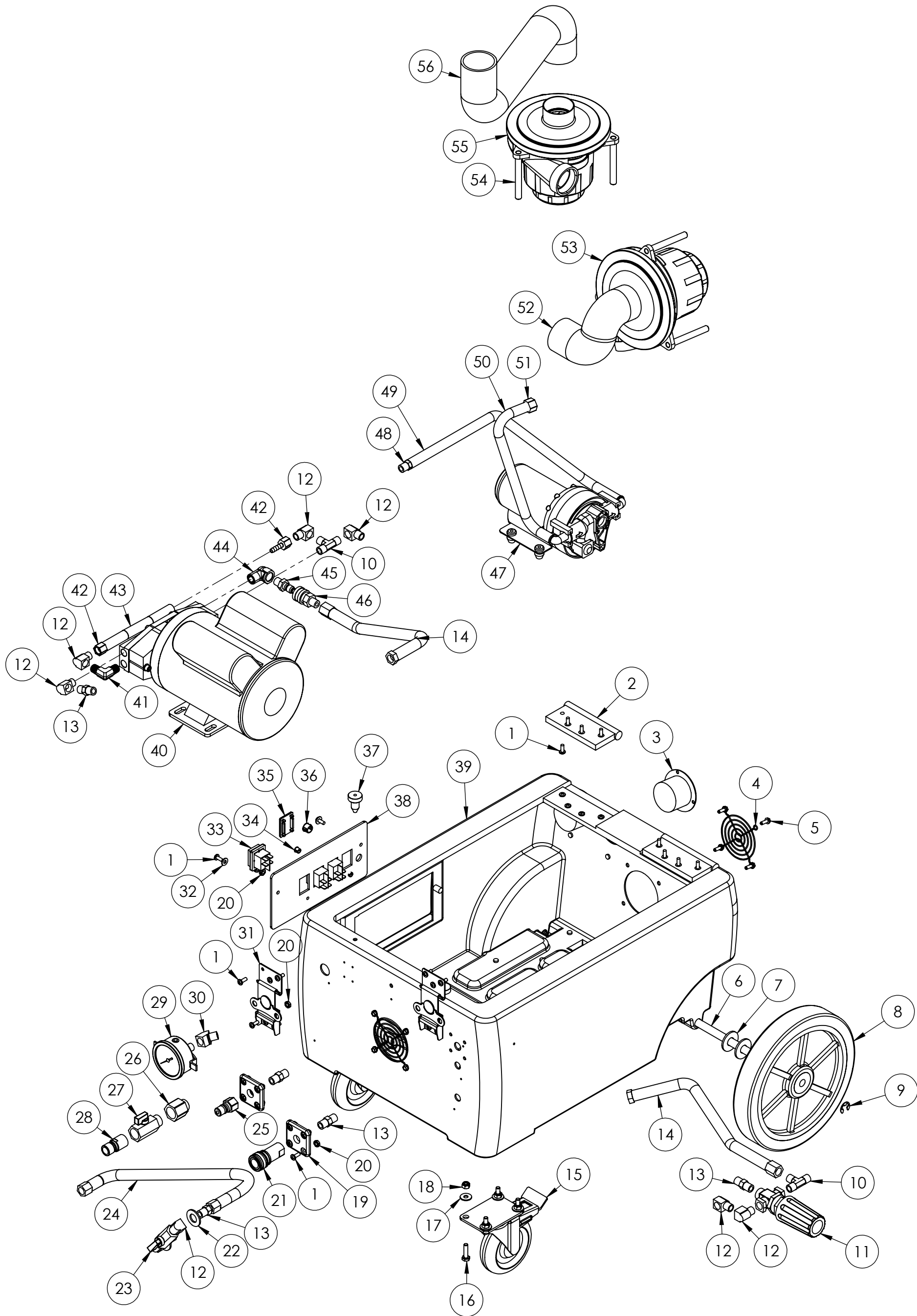
E

D

C

B

A



	NAME	DATE	MYTEE PRODUCTS, INC.	
DRAWN	M.LaBarbera	10/2019	858-679-1191	
CHECKED			TITLE:	
COMMENTS:			Breeze	
PROPRIETARY AND CONFIDENTIAL			SIZE	DWG. NO.
THE INFORMATION CONTAINED IN THIS DRAWING IS THE SOLE PROPERTY OF MYTEE PRODUCTS, INC. ANY REPRODUCTION IN PART OR AS A WHOLE WITHOUT THE WRITTEN PERMISSION OF MYTEE PRODUCTS, INC. IS PROHIBITED.			C	BZ-105LX-Auto
			SCALE: 1:24	REV
			DO NOT SCALE DRAWING	OD
			SHEET 2 OF 5	

F

E

D

C

B

A

F

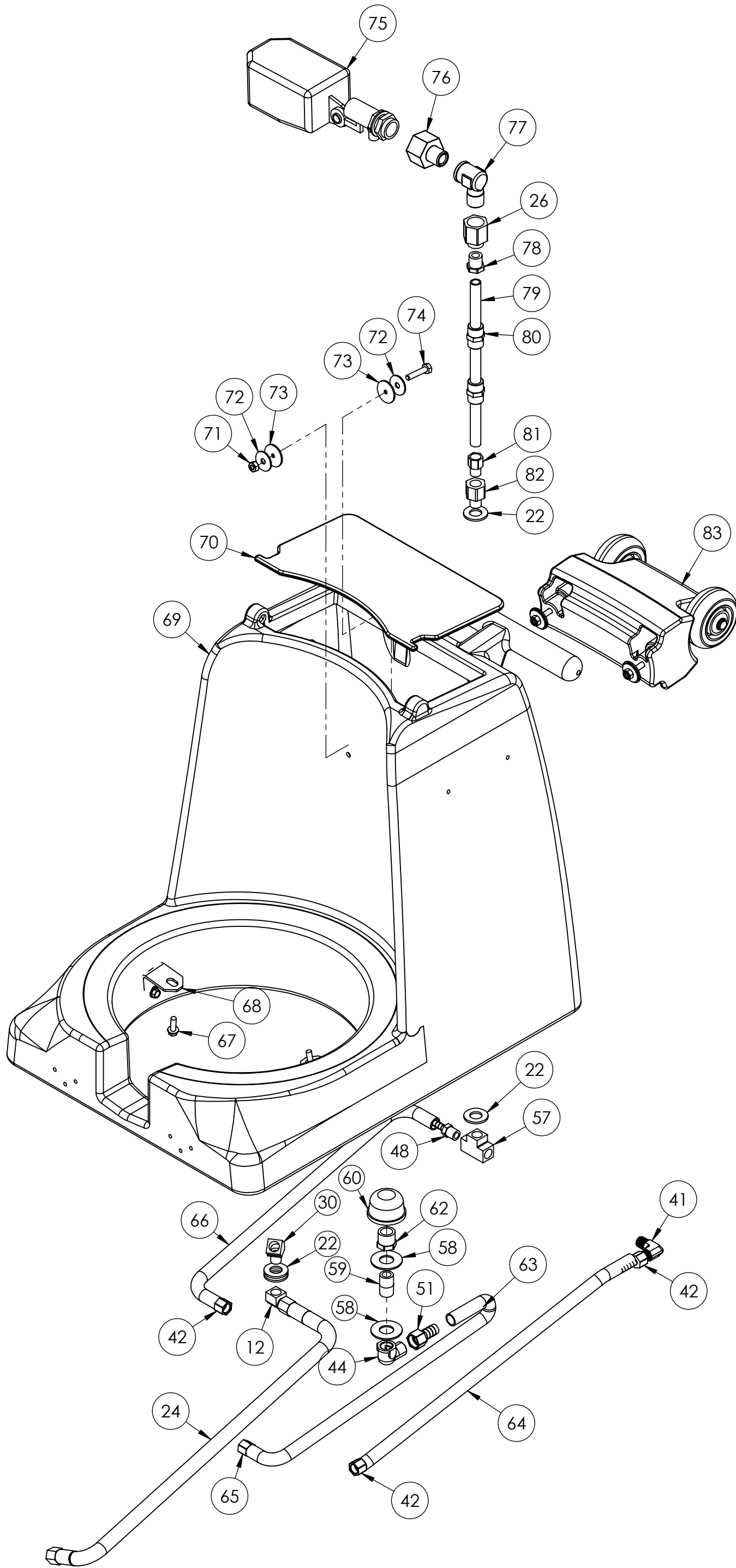
E

D

C

B

A



	NAME	DATE	MYTEE PRODUCTS, INC. 858-679-1191		
DRAWN	M.LaBarbera	10/2019	TITLE:		
CHECKED			Breeze		
COMMENTS:			REV		
PROPRIETARY AND CONFIDENTIAL			SIZE	DWG. NO.	REV
THE INFORMATION CONTAINED IN THIS DRAWING IS THE SOLE PROPERTY OF MYTEE PRODUCTS, INC. ANY REPRODUCTION IN PART OR AS A WHOLE WITHOUT THE WRITTEN PERMISSION OF MYTEE PRODUCTS, INC. IS PROHIBITED.			C	BZ-105LX-Auto	OD
			SCALE: 1:24	DO NOT SCALE DRAWING	SHEET 3 OF 5

F

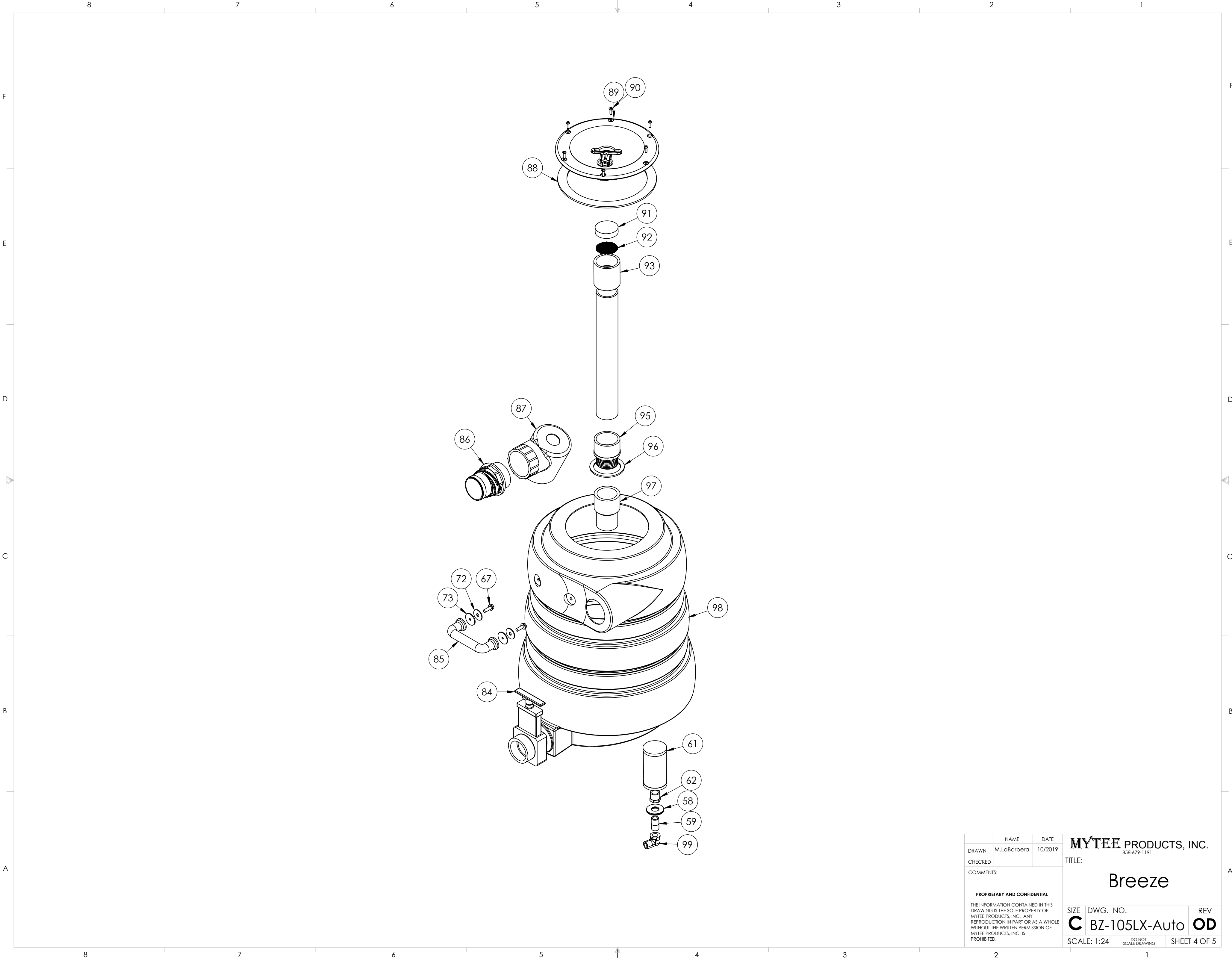
E

D

C

B

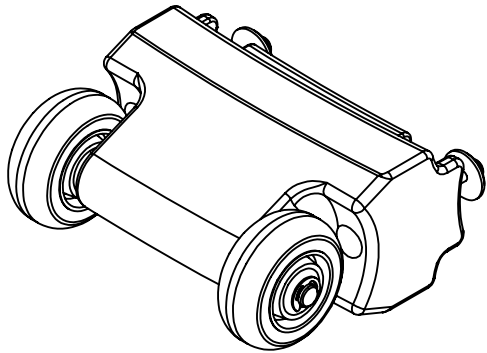
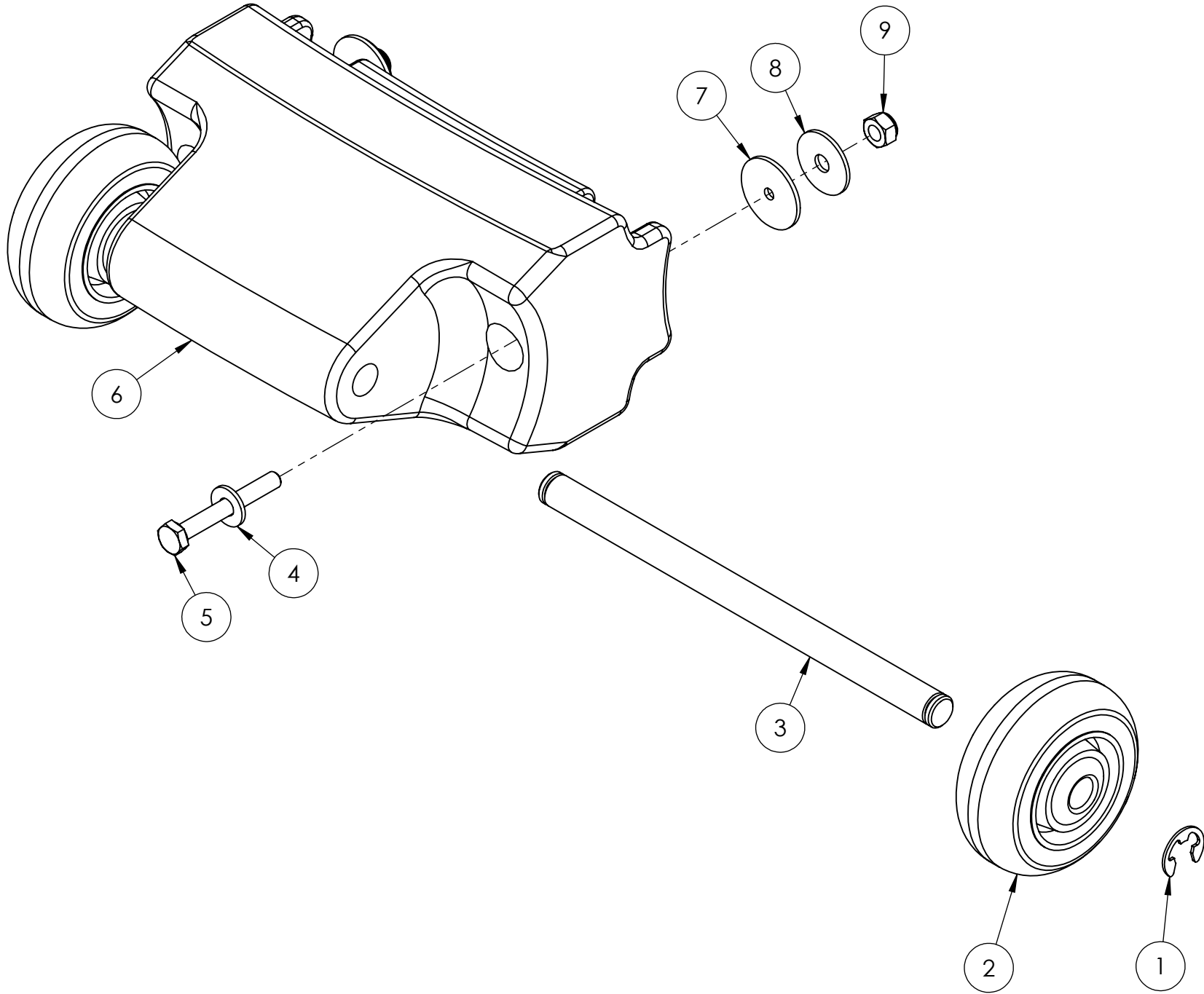
A



	NAME	DATE	<b>MYTEE</b> PRODUCTS, INC. 858-679-1191		
DRAWN	M.LaBarbera	10/2019	TITLE:		
CHECKED			<div>Breeze</div>		
COMMENTS:					
<b>PROPRIETARY AND CONFIDENTIAL</b>  THE INFORMATION CONTAINED IN THIS DRAWING IS THE SOLE PROPERTY OF MYTEE PRODUCTS, INC. ANY REPRODUCTION IN PART OR AS A WHOLE WITHOUT THE WRITTEN PERMISSION OF MYTEE PRODUCTS, INC. IS PROHIBITED.					
			SIZE	DWG. NO.	REV
			<b>C</b>	BZ-105LX-Auto	<b>OD</b>
			SCALE: 1:24	DO NOT SCALE DRAWING	SHEET 4 OF 5

ITEM NO.	PART NO.	DESCRIPTION	QTY.
1	H042	c-clip, 12mm, external	2
2	H358B	wheel, 3"	2
3	H507	axle, 7.94" x .50" dia	1
4	H210	washer, 1/4" flat, s/s	2
5	H169	bolt, 1/4-20 x 2", hex head	2
6	P650	wheel handle, LTD	1
7	G052	washer, buna 1-1/8" od x 3/16" id	2
8	H211	washer, 1/4" id x 1" od, flat, s/s	2
9	H216	nut, lock, 1/4-20, nylon insert, s/s	2

REVISIONS			
REV.	DESCRIPTION	DATE	APPROVED
OD	ORIGINAL DRAFT	3/2019	JFL



	NAME	DATE	<b>MYTEE</b> PRODUCTS, INC. 858-679-1191	
DRAWN	M.LaBarbera	3/2019		
CHECKED			TITLE: <b>Handle, Wheel Kit, LTD</b>	
COMMENTS:  <b>PROPRIETARY AND CONFIDENTIAL</b>  THE INFORMATION CONTAINED IN THIS DRAWING IS THE SOLE PROPERTY OF MYTEE PRODUCTS, INC. ANY REPRODUCTION IN PART OR AS A WHOLE WITHOUT THE WRITTEN PERMISSION OF MYTEE PRODUCTS, INC. IS PROHIBITED.			SIZE	DWG. NO.
			<b>BZ-105LX-Auto</b>	REV
			SCALE: 1:4	DO NOT SCALE DRAWING
				SHEET 5 OF 5