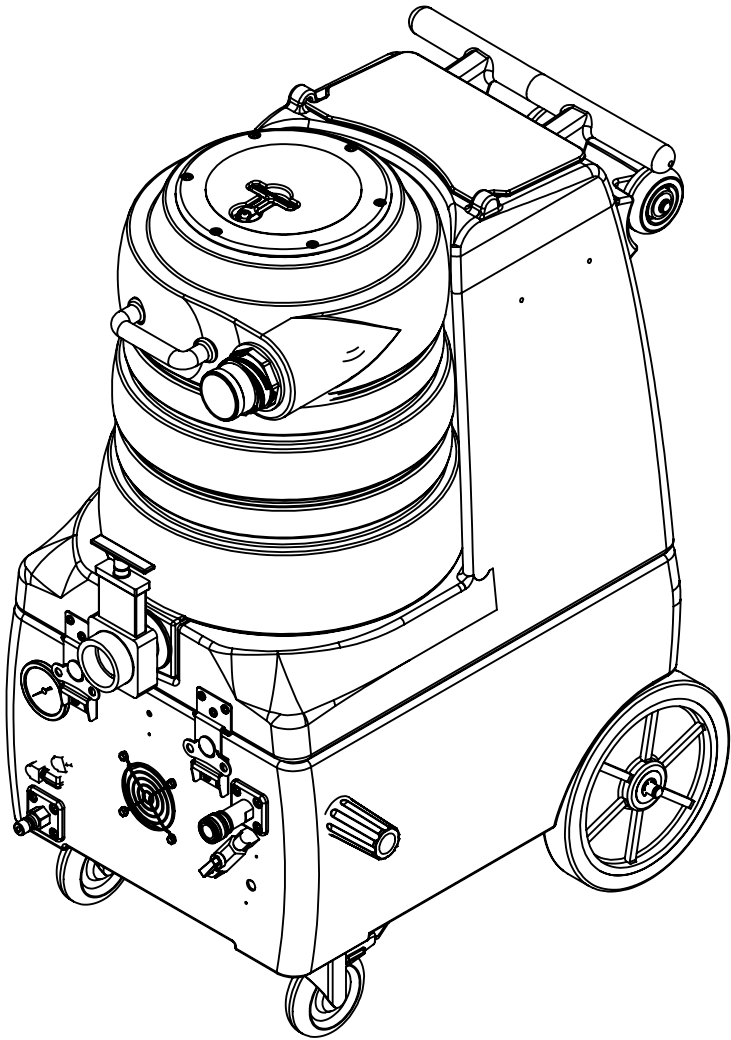


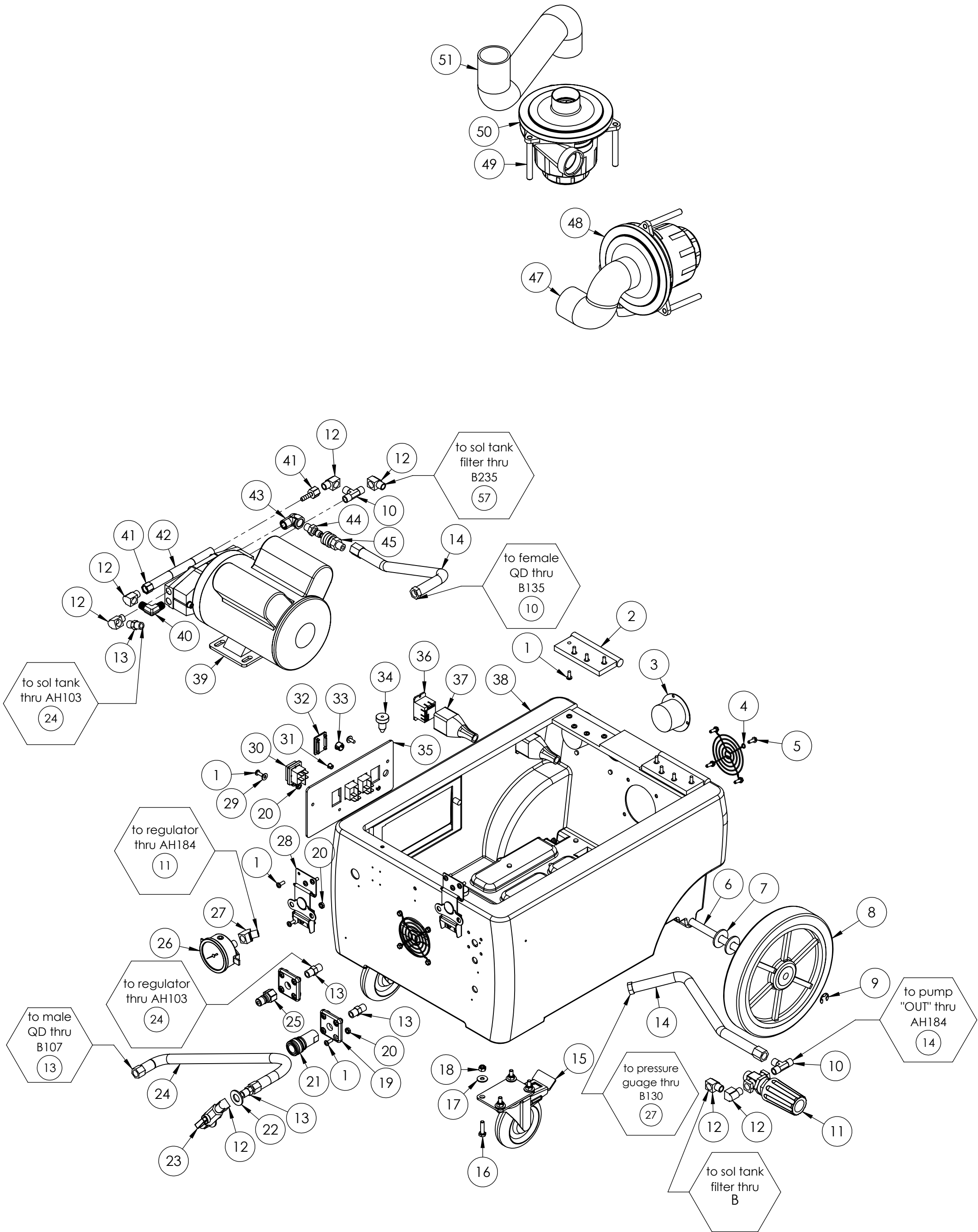
ITEM NO.	PART NO.	DESCRIPTION	QTY.
1	H230	screw, 10-32 x 1/2" phil pan head, s/s	40
2	H487	bracket, hinge	2
3	E360	flanged male inlet recaptacle, 230V, 20A	2
4	H296	guard, cooling fan, wire	2
5	H343	screw, #10 x 5/8" hex head zinc	8
6	H371	axle, 18.03" x .50" dia	1
7	H254	washer, axle, cut 1/2" id	4
8	H392	wheel, 10"	2
9	H042	c-clip, 12mm, external	2
10	B135	tee, 1/4" mpt x 1/4" mpt x 1/4" mpt	2
11	C313C	regulator, 450 psi, silver spring	1
12	B103	elbow, 90 deg street, 1/4"mpt x 1/4" fpt	11
13	B107	nipple, hex, 1/4"mpt x 1/4"mpt	6
14	AH103	hose, pulse, 3/8" x 14.5", 1/4 FSW x 1/4 FPT	1
15	H668	caster, 4", black hub & gray tread	2
16	H342	bolt, 1/4-20 x 1" hex head, s/s	8
17	H210	washer, 1/4" flat, s/s	8
18	H216	nut, lock, 1/4-20, nylon insert, s/s	8
19	H484	plate, mounting, QD	2
20	H273	nut, kep, #10-32 zinc	18
21	B102	quick disconnect, 1/4" fqd x 1/4" fpt	1
22	H212	flat washer, 9/16"ID x 1 1/16"OD, AN960-C916	7
23	B656	valve, ball, 1/4" fpt x 1/4" fpt, s/s	1
24	AH184	hose, 3/8" x 10", (OAL), f x fsw, surge, 1600psi	1
25	B101	qd, brass, 1/4" m	1
26	H308D	gauge, pressure, 2000 PSI	1
27	B130	45 deg, street elbow, brass, 1/4" male NPTF	2
28	H486	latch, front, set, large	2
29	H289	washer, 10 flat, s/s	2
30	E515	switch, rocker, 2 position	3
31	H422	plug, dome 3/8", black	2
32	P967A	plug, switch	1
33	H434	plug, vent, heyco, 1/2"	1
34	G068	bumper, 7/8" x 1/4" head	2
35	H641-DIY	plate, switch	1
36	E632	relay, shut-off switch, mechanical float, 115v	2
37	G165	cover, relay	2
38	P696	base, breeze	1
39	C342	pump, 500 PSI, pumptec, 120V/230V	1
40	B136	elbow, brass, 90 deg, 1/4" mpt x 1/4" mpt	1
41	B110	adapter, brass, 1/4" sw barb x 1/4" fpt, w/gasket	2
42	PH615	sol hose, 1/2" kuri 100psi	1
43	B186	elbow, 90 deg street, 3/8"mpt x 3/8" fmpt	2
44	B260A	quick disconnect, 1/4" mqd x mpt, open-spray	1
45	B259	qd, brass, 1/4" fqd x mpt	1
46	B160	adapter, brass, 1/2" barb x 3/8" fsw, ball end	1
47	PH628-10	vac hose, 2", black, wire reinforced	1
48	C347	vac motor, lx, hybrid, 173 cfm, 120v	1
49	H503	vac support, 3 stage, 3.25", no thrds	6
50	C348	vac motor, lx, hybrid, w/inlet tube, 173 cfm, 120v	1
51	PH628-10	vac hose, 2", black, wire reinforced	1
52	H299	washer, 11/16"id x 1-1/2"od x .075, s/s	2
53	B216	nipple, brass, 3/8" x close	1
54	B119A	filter, strainer, 1/2" fpt	1
55	B210	bushing, brass, 1/2"mpt x 3/8" fpt, hex	1
56	PH615	sol hose, 1/2" kuri 100psi	1
57	B235	adapter, brass, 3/8" barb x 1/4" fsw	1
58	H768	bolt, 1/4-20 x 3/4" serrated hex flange, zinc	6
59	H390A	bracket, "L", 2" x 2"	2
60	P697	sol tank, breeze	1
61	G062	lid, sol tank	1
62	H215	nut, hex, 1/4-20 s/s	1

ITEM NO.	PART NO.	DESCRIPTION	QTY.
63	H211	washer, 1/4"id x 1"od, flat, s/s	4
64	G052	washer, buna 1-1/8" od x 3/16" id	4
65	H203	bolt, 1/4-20 x 1-1/4"	1
66	A145	Handle, Wheel Kit, LTD	1
67	H225	valve, drain, 1-1/2"	1
68	H485	handle, aluminum grip, black	1
69	H135	Cuff-Lynx, 2" m cuff x 2" mpt	1
70	A926	elbow, inlet assembly 2"	1
71	G091	gasket, 7", vac lid	1
72	G090	lid, vac tank, clear, 7"	1
73	H304	screw, #8 x 5/8 phil oval, s/s	6
74	G003	filter, foam, 2", vac stack, 1/2"	1
75	G097	filter, screen mesh, 1.90" dia	1
76	P502	adapter, 1.5" pvc, fslip x fslip	1
77	PH633-13	pipe, pvc, 1-1/2"	1
78	P520	adapter, 1.5" mpt pvc	1
79	G002	gasket, cam fitting polyethylene, 2.35" OD 1.90" ID	1
80	H300	cuff, hose, 1-1/2 x 1-1/2, wire	1
81	B113	tee, 1/4" fpt x 1/4" fpt x 1/4" fpt	1
82	B156	nut, 1/4" npt	1
83	E373	level switch, vacuum shut-off, rear threads	2
84	P698	vac tank, breeze	1

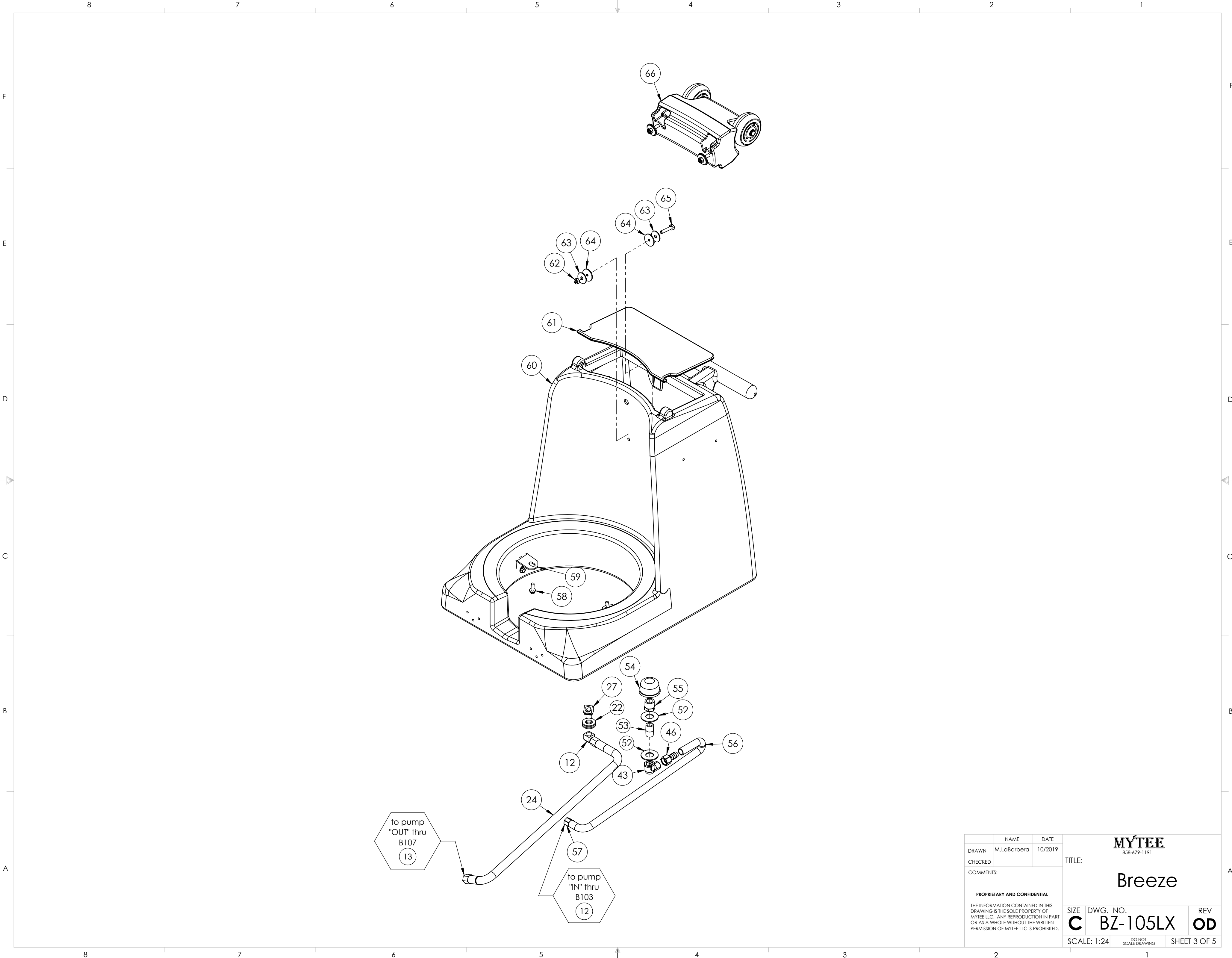
REVISIONS			
REV.	DESCRIPTION	DATE	APPROVED
OD	ORIGINAL DRAFT	10/2019	JFL



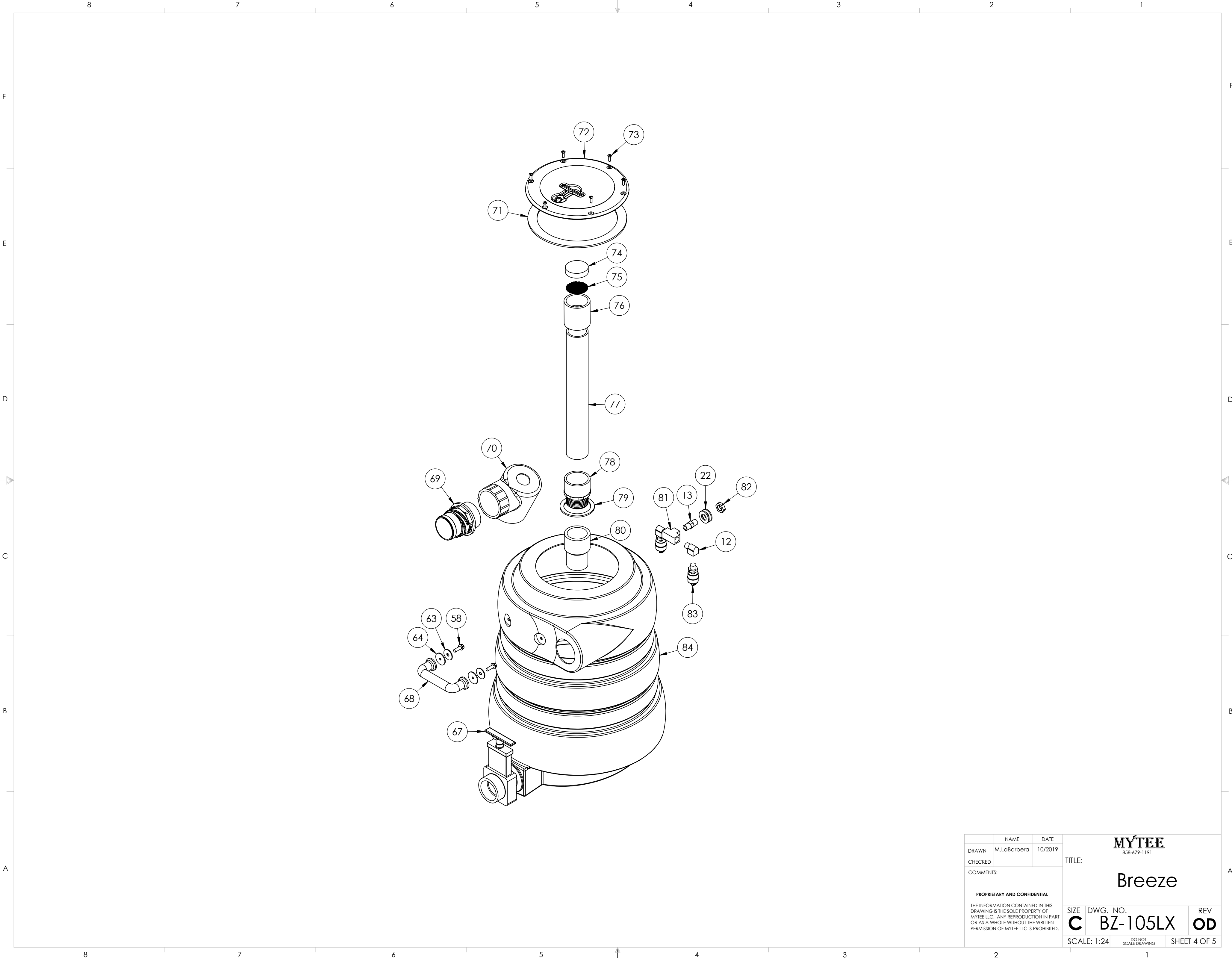
	NAME	DATE	<div>MYTEE</div> <div>858-679-1191</div>		
DRAWN	M.LaBarbera	10/2019			
CHECKED			TITLE: Breeze		
COMMENTS:					
<div>PROPRIETARY AND CONFIDENTIAL</div> <div>THE INFORMATION CONTAINED IN THIS DRAWING IS THE SOLE PROPERTY OF MYTEE LLC. ANY REPRODUCTION IN PART OR AS A WHOLE WITHOUT THE WRITTEN PERMISSION OF MYTEE LLC IS PROHIBITED.</div>			SIZE	DWG. NO.	REV
			C	BZ-105LX	OD
			SCALE: 1:24	DO NOT SCALE DRAWING	SHEET 1 OF 5



	NAME	DATE	MYTEE 858-679-1191		
DRAWN	M.LaBarbera	10/2019	TITLE:		
CHECKED			Breeze		
COMMENTS:			SIZE	DWG. NO.	REV
PROPRIETARY AND CONFIDENTIAL			C	BZ-105LX	OD
THE INFORMATION CONTAINED IN THIS DRAWING IS THE SOLE PROPERTY OF MYTEE LLC. ANY REPRODUCTION IN PART OR AS A WHOLE WITHOUT THE WRITTEN PERMISSION OF MYTEE LLC IS PROHIBITED.			SCALE: 1:24	DO NOT SCALE DRAWING	SHEET 2 OF 5



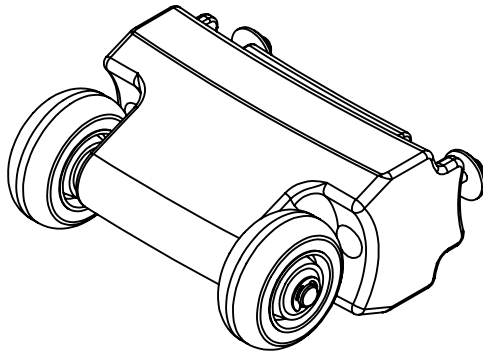
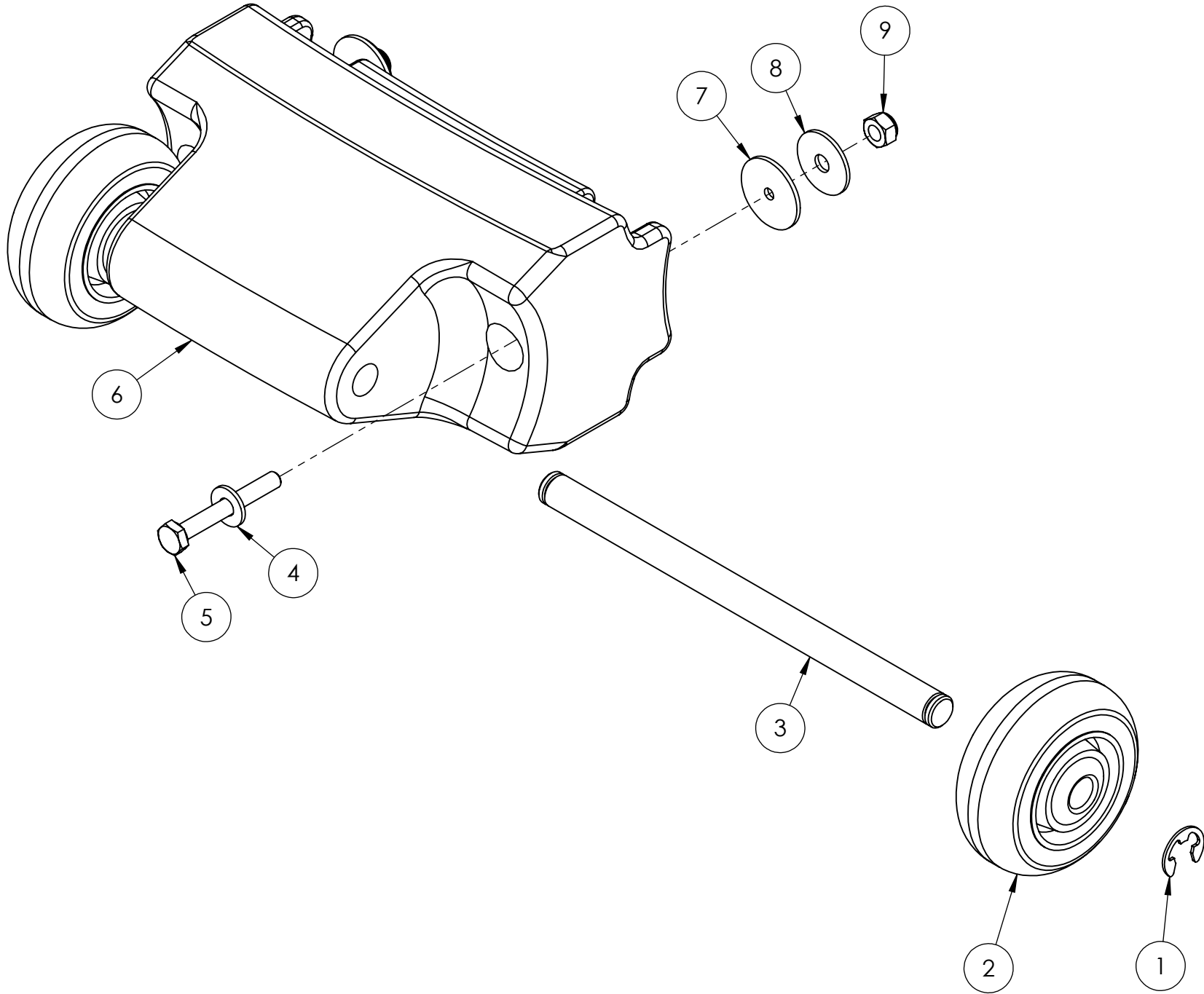
	NAME	DATE	MYTEE 858-679-1191		
DRAWN	M.LaBarbera	10/2019	TITLE: Breeze		
CHECKED					
COMMENTS: PROPRIETARY AND CONFIDENTIAL THE INFORMATION CONTAINED IN THIS DRAWING IS THE SOLE PROPERTY OF MYTEE LLC. ANY REPRODUCTION IN PART OR AS A WHOLE WITHOUT THE WRITTEN PERMISSION OF MYTEE LLC IS PROHIBITED.			SIZE	DWG. NO.	REV
			C	BZ-105LX	OD
			SCALE: 1:24	DO NOT SCALE DRAWING	SHEET 3 OF 5



	NAME	DATE	MYTEE 858-679-1191		
DRAWN	M.LaBarbera	10/2019	TITLE: Breeze		
CHECKED					
COMMENTS: PROPRIETARY AND CONFIDENTIAL THE INFORMATION CONTAINED IN THIS DRAWING IS THE SOLE PROPERTY OF MYTEE LLC. ANY REPRODUCTION IN PART OR AS A WHOLE WITHOUT THE WRITTEN PERMISSION OF MYTEE LLC IS PROHIBITED.					
			SIZE C	DWG. NO. BZ-105LX	REV OD
			SCALE: 1:24	DO NOT SCALE DRAWING	SHEET 4 OF 5

ITEM NO.	PART NO.	DESCRIPTION	QTY.
1	H042	c-clip, 12mm, external	2
2	H358B	wheel, 3"	2
3	H507	axle, 7.94" x .50" dia	1
4	H210	washer, 1/4" flat, s/s	2
5	H169	bolt, 1/4-20 x 2", hex head	2
6	P650	wheel handle, LTD	1
7	G052	washer, buna 1-1/8" od x 3/16" id	2
8	H211	washer, 1/4" id x 1" od, flat, s/s	2
9	H216	nut, lock, 1/4-20, nylon insert, s/s	2

REVISIONS			
REV.	DESCRIPTION	DATE	APPROVED
OD	ORIGINAL DRAFT	3/2019	JFL



	NAME	DATE	MYTEE 858-679-1191	
DRAWN	M.LaBarbera	3/2019		
CHECKED			TITLE: Handle, Wheel Kit, LTD	
COMMENTS: PROPRIETARY AND CONFIDENTIAL THE INFORMATION CONTAINED IN THIS DRAWING IS THE SOLE PROPERTY OF MYTEE LLC. ANY REPRODUCTION IN PART OR AS A WHOLE WITHOUT THE WRITTEN PERMISSION OF MYTEE LLC IS PROHIBITED.			SIZE C	DWG. NO. BZ-105LX
			SCALE: 1:4	REV OD
			DO NOT SCALE DRAWING	SHEET 5 OF 5