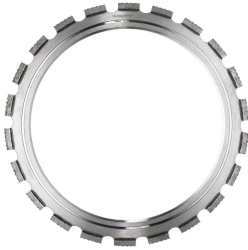


>



Model Number: 583802302

Husqvarna 583802302, Elite-Ring R10 Pre-Cut, 14 in (350 mm) x .235, Power Cutter Diamond blades, GTIN 805544364683

Manufacturer: Husqvarna Equipment

Husqvarna 583802302, Elite-Ring R10 Pre-Cut, 14 in (350 mm) x .235, Power Cutter Diamond blades, GTIN 805544364683

#### Description

Part of our Gold series of ring saw blades. The Elite-Ring® Pre-Cut has a 6 mm / 0.235" wide segment, making it the optimal choice for pre-cutting harder materials like concrete. With Husqvarna, you're selecting the original ring saw blade.

Application: Hard reinforced concrete with limestone and granite aggregates

#### Features

- The original Ring blade
- Deep cuts
- Drive disc included
- Ideal for concrete and hard materials
- Self sharpen when applying new blade
- Smooth and easy start

#### Specification

Product data

Type of power cutter tool

Ring saw blades

>

Performance level

Gold

Blade configuration

Segmented

Coolant

Wet

Power range, min hp

5.8 hp

Power range, max hp

7.4 hp

Dimensions

Diameter inch

>

14 in

Segment length inch

1.3 in

Segment width inch

0.235 in

Segment height inch

0.4 in

Packaging length (Calc)

18.11 in

Packaging width (Calc)

16.339 in

Packaging height (Calc)

0.394 in

>

Article gross weight (Calc)

2.998 lbs

Products using this

- 968424101 Kâ€³3600 MK II
- 970449801 Kâ€³7000 Ring
- 967205201 Kâ€³6500 Ring I
- 967290701 Kâ€³970 Ring II
- 967272301 Kâ€³970 Ring
- 967108601 Kâ€³6500 Ring II

---

*Availability: This product was added to our catalog on Friday 23 May, 2025*