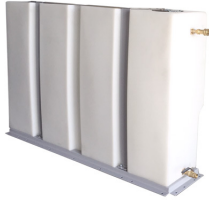


>



Model Number: 68-393

Sapphire Scientific 68-393, Dual 60 Gallon, Fresh Water Saddle Truckmount Tanks, with NO transfer Pump, Replaces Prochem

Manufacturer: Prochem

Sapphire Scientific 68-393 Dual 60 Gallon Fresh Water Saddle Truckmount Tank with NO transfer Pump

## PRODUCT DESCRIPTION

With space-saving, balanced weight distribution and universal installation design, Sapphire saddle tanks fit over the wheel wells of a number of popular van models, including the Dodge ProMaster, Ford Transit and many Chevy and GMC vans. Available as single 60-gallon tank or as a dual tank kit providing 120 gallons of onboard fresh water. Weight is centered over the vehicle axle to provide a safe, stable ride. Choose from dual or single tank kits, with or without demand pumps. Chemical Storage Rack is also available &ndash; mounts on top of saddle tanks

Compare to past OEM associations:

Prochem 8.604-162.0

Prochem 66-945261

Prochem 86041620

PP66-945261

Dimensions (H)36.2" x (W)14" x (L)54"

## Recommended Option

Aquatec 12 Volt 4.2 gpm 45psi AP63 Truck Mount Water Transfer Pump 5 Chamber Head 15 Amp Max Draw Mytee C361 Sapphire Scientific 68-002 Toico DDP550

Optional:

Sapphire Scientific 61-1297 Truckmount Water Tank Chemical Shelf

>

Availability: This product was added to our catalog on Sunday 06 February, 2005