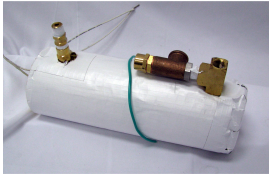


>



Model Number: 20150925

Clean Storm Heat Exchanger 120 volt for Complete Heat Goliath 1700 watts Heater 20150925

Manufacturer: Clean Storm

Use this NEW heater to either add heat to your non heated carpet cleaning machine or fix or repair your complete heating assembly in your Goliath Complete Heat carpet cleaning machine.

Heater consumes 15 amps of power and needs a dedicated 20 amp breaker.

Heater has 1/4" Mip pipe nipples coming out of the side of the heater casing.

Optional

Magnetic Clamp-On Water Softener Descaler for Truckmount & Portable Carpet Cleaning Machines 20260425

- Helps prevent scale buildup in pipes, coils, heaters, and carpet cleaning heat exchangers
- Reduces or eliminates routine monthly descaling in many applications
- Clamp-on installation &mdash; no cutting, plumbing, salt, chemicals, or cartridge replacement
- Maintenance-free design &mdash; no salt, resin, plastic pellets, filters, or media to flush
- Improves heat transfer efficiency by helping keep mineral buildup off heater surfaces
- May improve water flow / GPM by helping reduce mineral restriction over time
- Only 4 inches long for installation in tight areas on portable and truckmount equipment
- Longer Equipment lifespan

>

*Availability: This product was added to our catalog on Friday 25 September, 2015*

Steambrite Supply