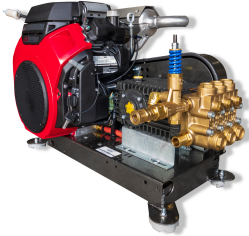


>



Model Number: B3524HTBG

Be Pressure B3524HTBG Truck Mounted Pressure Washer Honda Engine 3500psi 8gpm  
(Replaces X-3024HTEBGEN) 777987332911

Manufacturer: BE Pressure Supply

Be Pressure B3524HTBG Truck Mounted Pressure Washer Honda Engine 3500psi  
8gpm (4 Week Back order)

Key Points

- 3500 PSI Max Pressure
- 8.0 GPM Max Flow
- Powered by a reliable 688cc Honda GX690 gas engine.
- Triplex Pump
  
- External Unloader
- Port: Single

Specifications

Engine 688 cc Honda GX690

PSI 3500

GPM 8.0

Pump Comet / General

Pump and engine only.

No fuel tank, no hoses, no gun, no nozzles, no battery

Build to order with a 30 day wait.

General Warranty Details

Engines:

Honda GX &ndash; 3 Years, Honda GC &ndash; 2 Years \*\*Must contact local  
Honda Power Equipment for warranty\*\*

Powerase engines and motors &ndash; 2 Years for manufacturer defects or 1000  
hours, whichever comes first

Pumps: Axial &ndash; 1 Year, Triplex &ndash; 5 year\*\*

Accessories: (eg hose reels, hose, gun, wand, tip, injector, couplers, unloaders,  
wheels etc.) 90 Days

sku 777987332911

Optional

Pressure Washing 3/8in Solution Tee M X F X F 20141118

>

---

*Availability: This product was added to our catalog on Tuesday 25 August, 2020*

