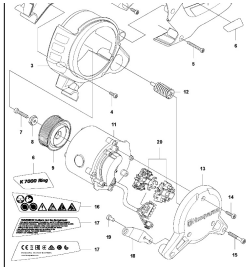


>



Model Number: 599637203

Husqvarna 599637203 Replacement K 7000 Concrete Chain Saw Prime Power Cutters Motor Only  
Part 11 599637201 805544499033

Manufacturer: Husqvarna Equipment

Husqvarna 970449701 K 7000 Concrete Chain Saw Prime Power Cutters  
Replacement Motor Only Part number 11 Only 599637201 GTIN 805544499033

## Product Description

Husqvarna K 7000 Chain is the new version of Husqvarna's versatile PRIME<sup>®</sup> chain power cutter. This machine is very useful in all handheld applications where you demand high precision without over-cutting, such as narrow plunge cuts and corner-cutting of openings for doors and windows. The 16 in (400 mm) cutting depth adds even more versatility to the potential applications for this machine. Husqvarna K 7000 Chain comes with several new features including the updated, intelligent motor control software that enables increased cutting performance. Replacement motor only as seen as part 11 in image.

## 2020-09 Service Bulletin

Output power 7.4 hp  
Cutting depth, max 18 in  
Complete saw Weight 20.1 lbs  
Rated input power 4/ 7.4 hp

Bar and chain sold separately.

Compare to current or past OEM associations:

599 63 72-03  
UPC 805544499033  
599637203  
HQ599637203  
599637201

Optional

>

Husqvarna 970449701 K 7000 Concrete Chain Saw Prime Power Cutters

Manufacturer: Husqvarna Equipment

Husqvarna 531101184 SLC 45 PXC45 Diamond Chain 590330101  
ECONOMY-SLC45 14" 32 SEG 3/8 Ships after Sept 2023

Husqvarna 506346202 - 14in Guide Bar Only For Husqvarna Concrete Chain  
Saw 506 34 62â€'02

Husqvarna PP65 Electric Power Pack For Prime Products PP 65 HF  
966563703

*Availability: This product was added to our catalog on Monday 14 August, 2023*